

It s difficult to cover up too many cables in the cable tray





Overview

Trying to stuff too many cables into a tray or conduit not only causes physical damage to the wires but also limits airflow and complicates future additions or repairs. A wide range of issues including equipment failures, safety events, maintenance dreadful events and extended downtime can result from disorganized or inadequately supported cables. This comprehensive guide investigates the most frequent wire management challenges faced in real-world setups and. It handles heavy cable loads and spans up to 20 feet between supports depending on loading. Ventilated trough tray has a solid bottom with ventilation openings (typically 1/4-inch to 1-inch slots or holes). Installation of Cable in Cable Trays involves precise routing on support systems, NEC/IEC compliance, grounding, ampacity derating, bend radius control, segregation of services, fire safety, labeling, and reliable cable management for industrial and commercial facilities.



It s difficult to cover up too many cables in the cable tray



Why Cables Sag in Wire Mesh Baskets or Cable Trays , CMW

Discover the top reasons your cables may be sagging in a wire mesh basket or cable tray, plus how to fix it with expert tips on cable containment and support systems.

[Contact Us](#)

Mastering Cable Tray Installation , Step-by-Step Guide for a Seamless

Learn how to install cable trays correctly. Get the ultimate step-by-step guide on setting up a seamless and reliable cable management system.

[Contact Us](#)



5 cable management tricks I use to keep wires tidy in my

As it's one of my passions in life (incredibly boring I know), I like to take a holistic approach to cable management. This means not only managing

[Contact Us](#)

POWER CABLE INSTALLATION GUIDE

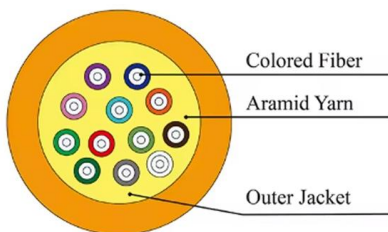
Southwire Company's Power Cable Installation Guide provides installation information for extruded dielectric power cable systems. This guide covers copper and aluminum conductors from No. 14



How to Fix Common Cable Management Issues using

Discover common cable management problems and how cable tray accessories effectively solve them to ensure safety and performance.

[Contact Us](#)



NEC Article 392 Guide: Ensuring Compliance for Cable

The short answer is no. Due to their exposure to the open air because of the cable trays, the wires contained within need a very durable outer

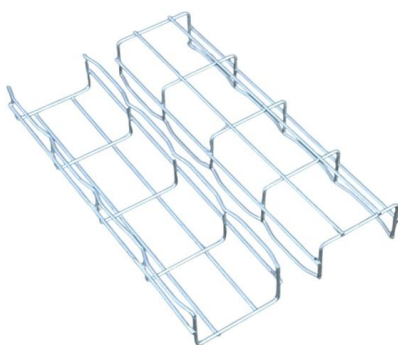
[Contact Us](#)



NEC Article 392 Guide: Ensuring Compliance for Cable Tray Systems

The short answer is no. Due to their exposure to the open air because of the cable trays, the wires contained within need a very durable outer covering. The regulations dictate that the cables

[Contact Us](#)

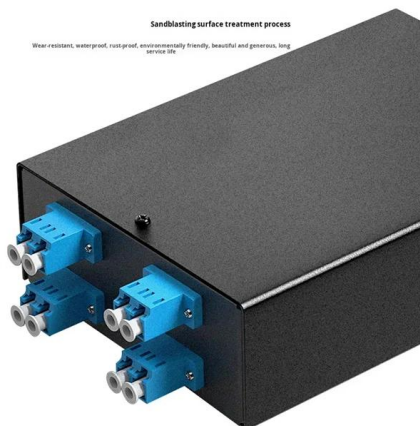




How to Fix Common Cable Management Issues using Cable Tray

Discover common cable management problems and how cable tray accessories effectively solve them to ensure safety and performance.

[Contact Us](#)



Troubleshooting Medium Duty Cable Tray Installations: Overcoming

Explore expert insights into resolving common challenges faced in medium-duty cable tray installations. From improper installation to environmental factors, learn effective troubleshooting

[Contact Us](#)

10 Common Mistakes in Ladder Cable Tray Installation

10 Common Mistakes in Ladder Cable Tray Installation Proper installation of ladder cable trays is critical for ensuring an efficient and safe cable management

[Contact Us](#)



Cable Tray Questions , Cable Tray Institute

Answer: The NEC does not have a specific installation clearance, but indicates in section 318-6 (b) that cable trays should be exposed and accessible. Telecommunications standard TIA/EIA-569

[Contact Us](#)



How to Fix an Overloaded Cable Tray System

Spot the Warning Signs Is your cable tray overloaded? Look out for these clues: Sagging trays Difficult cable identification and access Overheating cables or signal performance issues The

[Contact Us](#)



What are Cable Trays & Different Types of Cable Trays

Learn what cable trays are & explore the various types, benefits, and purposes. Gain insights into how electrical cable trays can revolutionize your

[Contact Us](#)

Installation Of Cable In Cable Trays: NEC, Safety

Designers and installers are continually faced with difficult challenges in the layout and installation of cable in tray. It is incumbent that pre-planning of an orderly sequence of events takes place to ensure

[Contact Us](#)



Common Mistakes to Avoid When Installing Cable Trays

Overloading these trays reduces ventilation, increases the chance of cable damage, and makes it harder to locate or replace individual wires later. Plan your cable layout and separate different types of

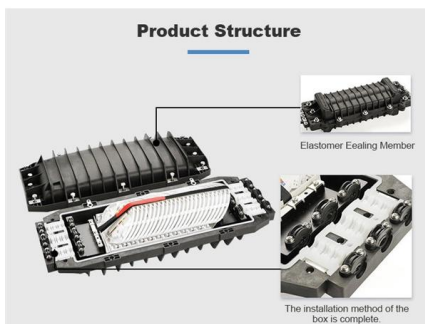
[Contact Us](#)



Core Principles for Electrical and Instrumentation Cable Tray Layouts

Overload Prevention: Avoid overloading trays with too many cables, which can lead to overheating, cable damage, and safety risks. Calculate the tray's load capacity based on the total cable weight

[Contact Us](#)



Avoiding Mistakes in Cable Tray Installation

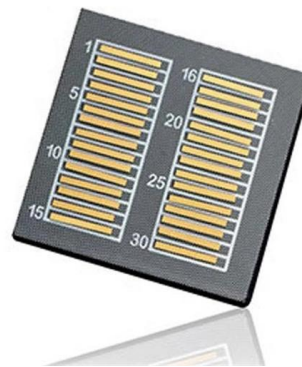
Avoid common cable tray installation mistakes to ensure safe, compliant, and efficient electrical infrastructure.

[Contact Us](#)

Enhancing Workplace Safety with Cable Trays , Reducing Hazards

Improve workplace safety by reducing hazards and accidents with the installation of cable trays. Learn about the benefits, best practices for installation, and maintenance tips that can help

[Contact Us](#)



Explaining NEC Article 392 on Cable Trays

NEC Article 392 explains cable trays, their components, appropriate wiring methods for cable trays, and instances where they are and are not

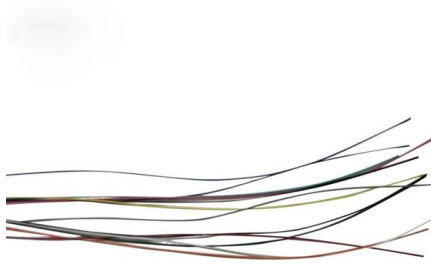
[Contact Us](#)



14 Smart Ways to Hide Cords and Wires in the House

To help your home look exceptionally neat and organized, here's how to hide cords in every room--plus how to hide TV wires on the wall.

[Contact Us](#)



Cable Tray Fill Rules (NEC 392)

This guide covers the cable tray types and their appropriate applications, the fill rules for each configuration, ampacity derating requirements, separation of power and signal cables, and the

[Contact Us](#)

Cable Tray Installation and Maintenance Considerations

Learn about effective Cable Tray Installation and Maintenance. Get practical tips for planning, fitting, and looking after your cable trays.

[Contact Us](#)



Common Network Cabling Mistakes (And How to Avoid Them)

Trying to stuff too many cables into a tray or conduit not only causes physical damage to the wires but also limits airflow and complicates future additions or repairs.

[Contact Us](#)



Essential Principles for Cable Tray Access Path Setup

The Importance of Cable Tray Access Path Setup
Setting up an efficient cable tray access path is crucial for ensuring that maintenance personnel

[Contact Us](#)



Do You Really Need a Cable Tray? Here's How to Decide

However, not all installations require cable trays, and it's essential to understand when and why you should use them. In this article, we'll discuss the

[Contact Us](#)

Cable Tray Design, Layout, and Overall Wiring Planning

Learn about effective Cable Tray Design and Layout for electrical systems. Our guide covers planning, material choice, safety, and maintenance.

[Contact Us](#)



Cable Tray Wiring Layout , Information by Electrical Professionals for

Hi, I was wondering if it is permissible to stack wires/cables in a cable tray. The NEC tables only show column width which leads me to believe that stacking is not allowed. We will be

[Contact Us](#)



24 Genius Cable Storage Ideas (Manage Your Cables Like a Pro!)

In this post, you'll find genius cable storage ideas, and cable management ideas, that will have your space feeling clean. You'll be

[Contact Us](#)



How to Solve Excessive Cable Tray Installation Spacing?

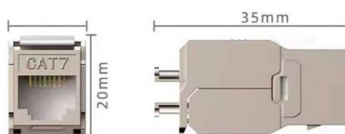
Maintenance: Spacing allows for easy access to cables, making inspections, upgrades, or repairs simpler. If trays are spaced too far apart, it could

[Contact Us](#)

Cable Tray Fill Rules (NEC 392)

This guide covers the cable tray types and their appropriate applications, the fill rules for each configuration, ampacity derating requirements,

[Contact Us](#)



A Guide to Installing and Supporting Electrical Cable Trays

A professional guide to installing electrical cable tray systems per NEC Article 392. Covers support, securing cables, and fill calculations.

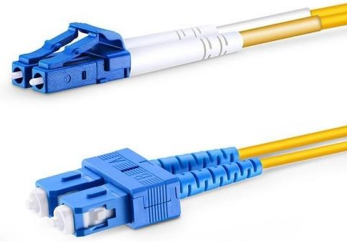
[Contact Us](#)



Installation Of Cable In Cable Trays: NEC, Safety

Designers and installers are continually faced with difficult challenges in the layout and installation of cable in tray. It is incumbent that pre-planning of an orderly

[Contact Us](#)



Cable Tray Fill Rules (NEC 392)

Cable Tray Fill and Installation per NEC 392 Cable tray types, fill rules for single-conductor and multiconductor cables, ampacity derating, separation

[Contact Us](#)

Core Principles for Electrical and Instrumentation Cable

Overload Prevention: Avoid overloading trays with too many cables, which can lead to overheating, cable damage, and safety risks. Calculate the tray's load capacity

[Contact Us](#)



Contact Us

For datasheets, pricing, or custom fiber access solutions, please visit:
<https://www.frindel.es>