

# **Intelligent Operation Guide for Integrated Power Cabinets**





## Intelligent Operation Guide for Integrated Power Cabinets

---



### **Eaton 93PM Integrated Accessory Cabinet-Distribution installation and**

The IAC-D provides power distribution options for servers, racks, and other equipment via distribution panelboards, or distributes power to larger loads via distribution subfeed circuit breakers.

[Contact Us](#)

### **Electrical Control Cabinet System**

Electrical Control Cabinet for domestic water supply stations The electrical cabinet system is programmed with Programmable Logic

[Contact Us](#)



### **iSmart Series Integrated Cabinet Solution**

The power distribution, UPS, monitoring, and refrigeration cabinets are integrated to save space. Engineering free design, free decoration and wiring, remote

[Contact Us](#)

### **Smart control cabinets Solutions for automating the secondary**

The range of control cabinets for cable networks comes in different sizes and materials and can be flexibly mounted to suit a variety of installations, whereas the cabinets for overhead-line networks



### Intelligent precision power distribution system

Overview: PLS-DP series of intelligent precision power distribution Cabinet series products include: power, UPS input, output, counter, three varieties of Cabinet. It is not just a distribution Cabinet,

[Contact Us](#)

### What are the integrated energy storage cabinets?

In summation, integrated energy storage cabinets represent a pivotal advancement in the integration of renewable energy and storage technologies.

[Contact Us](#)



### Eaton 9390 IDC (100-160 kVA) installation and operation manual

Refer to the Powerware 9390 UPS (100-160 kVA) Installation and Operation Manual for UPS cabinet terminal locations and termination requirements. See Drawing 164201560-7, starting on page A-17,

[Contact Us](#)

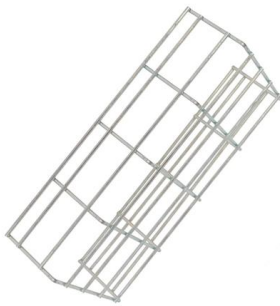
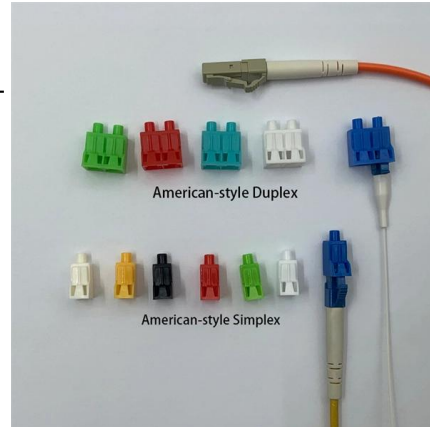




## Integrated Power Distribution Cabinet

Intelligent Power Distribution Cabinet TPD48202B-N20B6 Datasheet - Free download as PDF File (.pdf), Text File (.txt) or read online for free. The

[Contact Us](#)



## USING INTELLIGENT POWER MODULES

6.6 Controlling the Intelligent Power Module IPM (Intelligent Power Modules) are easy to operate. The integrated drive and protection circuits require only an isolated power supply and a low level on/off

[Contact Us](#)

## Intelligent Cabinets and Storage Racks

For additional details refer to Intelligent Cabinet documentation for shelving configurations by device model This document and the information contained therein (Information) are Zebra-confidential,

[Contact Us](#)



## IntelliBatt Rolls Out an Intelligent Battery Cabinet

IntelliBatt cabinet, which features a built-in battery monitoring system that is visible via integrated in-door viewing panels, and includes the ability to accommodate different battery sizes and terminal

[Contact Us](#)



## Integrated Power Distribution Cabinet

It features precise load management, an LCD display for easy operation, and mobile app support for remote management. Suitable for various scenarios including

[Contact Us](#)



## iSmart Series Integrated Cabinet Solution - RSP Technology

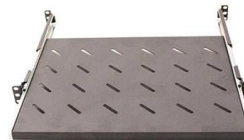
The cabinet incorporates an intelligent monitoring system, ensuring the secure and dependable operation of the computer room. Easy installation and rapid deployment The power distribution

[Contact Us](#)

## Intelligent precision power distribution system

It is not just a distribution Cabinet, power inputs, outputs, power monitoring system as a whole set of integrated power distribution design, is future-oriented distribution system.

[Contact Us](#)



Webit Cabling



## Inverter cabinet units

Use the following checklist to guide you through the electrical installation procedure for the cabinet unit. Read the "Safety instructions" section at the start of these Operating Instructions before you start

[Contact Us](#)

## Eaton 9390 IAC (Models IAC-D) installation



## and operation manual

This manual describes how to install and operate the Powerware 9390 IAC-D. Read and understand the procedures described in this manual to ensure trouble-free installation and operation.

[Contact Us](#)



### Cabinet design and EMC

EMC-compliant design and control cabinet configuration For detailed configuration instructions regarding the EMC-compliant design of drives and control cabinet configuration, refer to the "SINAMICS Low

[Contact Us](#)

### MDC product introduction20230805.cdr

Focusing on R& D and production of micro-modules, environmental refrigeration, and intelligent monitoring, integrating power distribution, UPS, batteries, etc., INVT Power provides you with four

[Contact Us](#)



### Integrated energy storage cabinets

Integrated cabinets often have space-saving designs suitable for various installation settings. These cabinets contribute to reliable energy storage management,

[Contact Us](#)



## Guide to PLC Cabinets: Types, Layout, Wiring

Learn the essentials of designing and wiring PLC control cabinets, including component selection, cooling, wiring tips, and safety standards.

[Contact Us](#)



## Integrated Power and Control Systems , Schneider

Integrated Power and Control Solutions: A better approach When you choose Square D(TM) Integrated Power and Control Solutions (IPaCS), you can optimize

[Contact Us](#)

## Smart Cabinet

No other solution offers the industry's leading power, precision cooling and data center infrastructure management systems for such a wide array of applications and environments. The SmartCabinetTM

[Contact Us](#)



## Integrated power assemblies (e-houses) design guide

Power Distribution & Control Assemblies in a Coordinated Enclosure Eaton's Integrated Power Assemblies (IPA) are fully customizable, prefabricated e-houses that contain Eaton's wide-ranging

[Contact Us](#)

## Intelligent Integrated Power Switchgear Complete Set Electrical Cabinet



The integrated smart control system, combining multi-parameter monitoring meters and generator controllers, enables comprehensive monitoring of electrical parameters (voltage, current, power) and

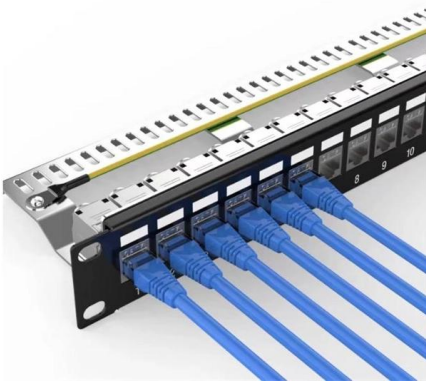
[Contact Us](#)



### **PDU8000 Integrated Power Distribution Cabinet User Manual**

When the load power is small, the UPS, air conditioner, and precision power distribution functionality can be integrated in a cabinet to save installation space and reduce costs.

[Contact Us](#)



### **Indoor control cabinets**

These solutions integrate various smart technologies to create a connected home environment that allows homeowners to manage and optimize energy use

[Contact Us](#)



### **Smart control cabinets Solutions for automating the secondary**

Portfolio benefits Improved quality of power supply through less and shorter outages limited to a restricted part of the distribution network Improved safety for the utility personnel through more exact

[Contact Us](#)



Cable structure



## Contact Us

---

For datasheets, pricing, or custom fiber access solutions, please visit:  
<https://www.frindel.es>