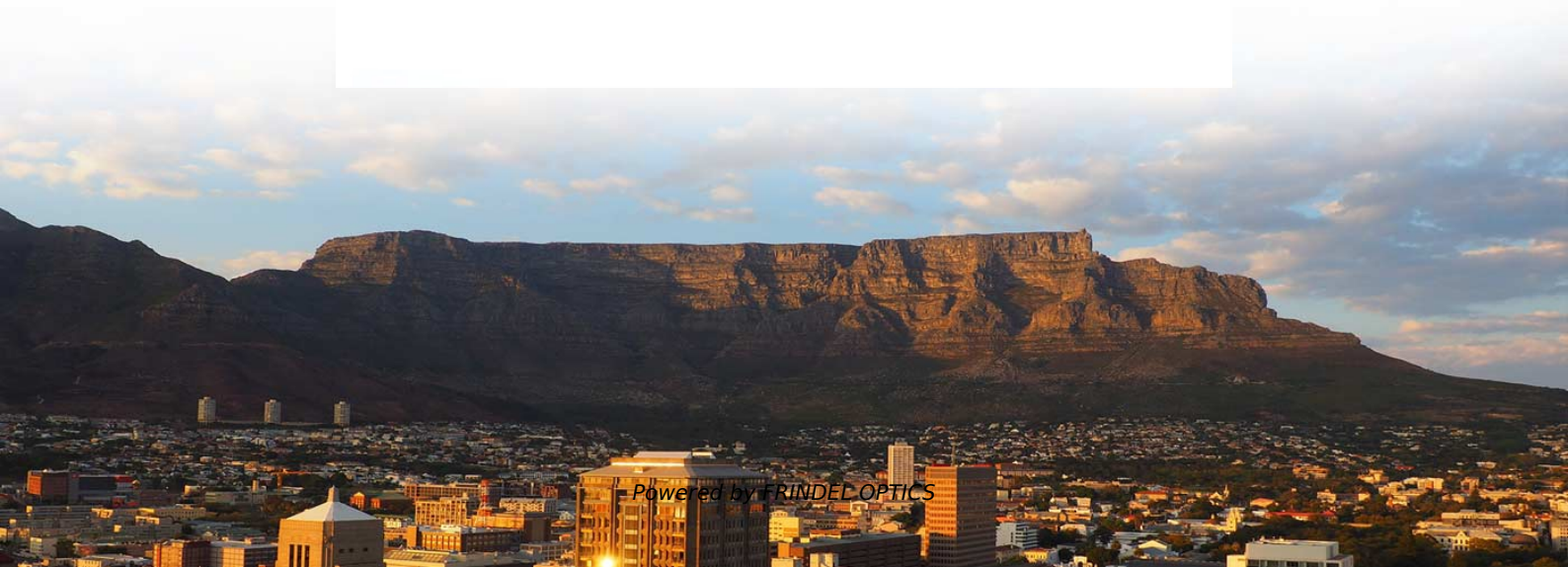


Installation of Three-Dimensional Right Angle Bends on Cable Trays





Installation of Three-Dimensional Right Angle Bends on Cable Trays



How to Install Cable Tray: A Comprehensive Guide to Different Cable

Welcome to our step-by-step guide on installing cable trays! In this video, we'll explore the different types of cable trays available and provide detailed instructions for their installation.

[Contact Us](#)

CABLE TRAY SYSTEMS GUIDE

The Ladder Tray features light, rugged, tubular steel construction. It is designed for mechanical support and strain relief in long runs of cable and creates a smooth gradual bend for cable. Rail and stringer

[Contact Us](#)



CABLE TRAY

For Cable Tray Installers--This publication is intended as a practical guide for the proper installation of cable tray systems. Cable tray systems design shall comply with NEC Article 392, NEMA VE 1, and

[Contact Us](#)

Cable Tray Installation Guidelines , PDF , Galvanization

This document provides details on installing cable trays and their support systems. It includes diagrams showing how to mount cable trays on walls using pre



Bending Cable Tray

You can buy a manufactured 90 degree bend or make one on a cable tray bending machine but in this video I show you how to make one using a metal

[Contact Us](#)



Best practice guide to cable ladder and cable tray

Cable ladder and cable tray systems The following recommendations are intended to be a practical guide to ensure the safe and proper installation of

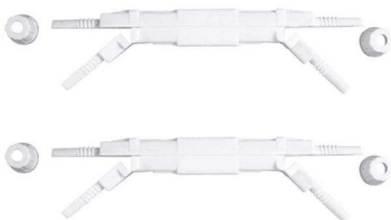
[Contact Us](#)



Beama Best Practice Guide , Installation Of The System , Cable

The following recommendations are intended to be a practical guide to ensure the safe and proper installation of cable ladder and cable tray systems and channel support and other support systems.

[Contact Us](#)





Working with EzyTrays

EzyStrut offers useful product installation and fabrication information for their range of EzyTray cable tray products.

[Contact Us](#)



Cable Laying: Everything You Must Know

The number of bends in metal conduit should be minimized during installation. Each conduit should not have more than three bends, not more than two right-angle

[Contact Us](#)

Cable Tray Design and Standards Guide

1. The document outlines codes and standards that must be followed for design and construction of cable trays and their components. Standards listed include those

[Contact Us](#)



B-Line series Cable Tray Design

Assembly Guide

Guide for making bends, tees, crosses, risers and reducers from straight sections of wire basket cable trays live at the project.

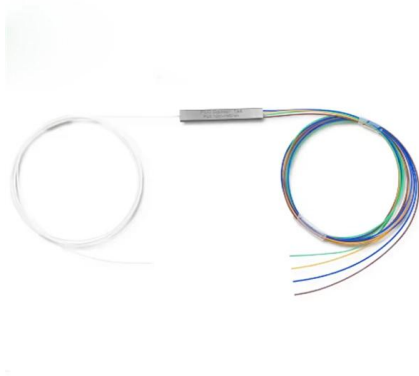
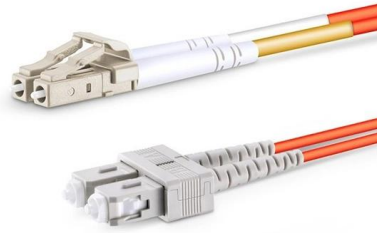
[Contact Us](#)



Considerations

As an industry leader in cable tray, Eaton offers one of the widest ranges of cable management solutions available in the market today with its B-Line series portfolio. With unmatched quality and service, we

[Contact Us](#)



7 Types of Cable Trays: How to Choose the Right One

The answer is simple: different cable characteristics and installation environments demand different tray designs. Cable weight, heat generation, bend

[Contact Us](#)

GUIDE CABLE TRAYS TECHNICAL

If it has excellent electrical continuity and is integrated in the installation's equipotential bonding system, a metal cable tray reduces the coupling's impact and thus contributes to good EMC of the electrical

[Contact Us](#)



Installation Of Cable In Cable Trays: NEC, Safety

Installation of Cable in Cable Trays involves precise routing on support systems, NEC/IEC compliance, grounding, ampacity derating, bend radius control,

[Contact Us](#)





INSTALLATION GUIDE

Center hung tray supports allow for quicker and easier cable installation by allowing cables to be deposited into tray systems from each side. There is a maximum load capacity per hanger of 318 kg

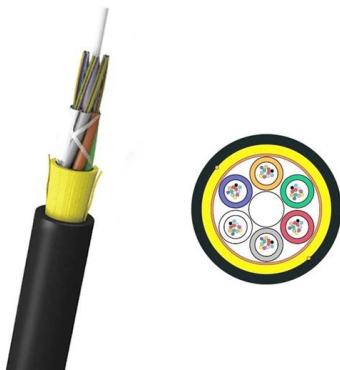
[Contact Us](#)



CUTTING GUIDELINE

Oglaend System manufacture and deliver Multidiscipline modular bolted support systems, cable trays, cable ladders and accessories for complete installation and containment of Instrument, Electrical,

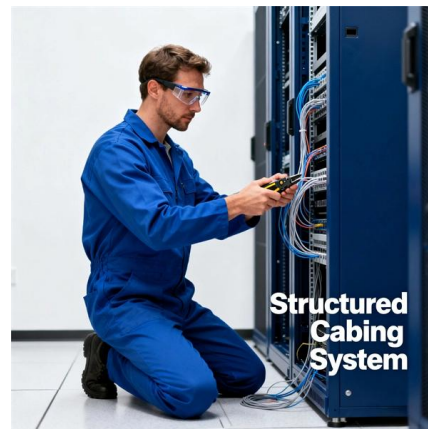
[Contact Us](#)



Cable Tray Technical Guide A practical guide to product selection and

A practical guide to product selection and installation This guide for engineers and installers has been developed by ABB as a practical reference regarding cable tray characteristics, installation, and

[Contact Us](#)



Trunking Cutting Techniques Guide , PDF

The document provides instructions for forming various bends and joints in electrical trunking and cable trays. It describes: 1) How to mark and cut a right-angle

[Contact Us](#)



Best Practice Guide to Cable Ladder and Cable Tray Systems

Introduction This publication is intended as a practical guide for the proper and safe* installation of cable ladder systems, cable tray systems, channel support systems and associated supports.

[Contact Us](#)



Cable Tray Technical Guide A practical guide to product selection and

Cable tray length is selected based on the load to be supported, the distance between the supports (also referred to as the span), and handling and installation constraints.

[Contact Us](#)

Contact Us

For datasheets, pricing, or custom fiber access solutions, please visit:
<https://www.frindel.es>