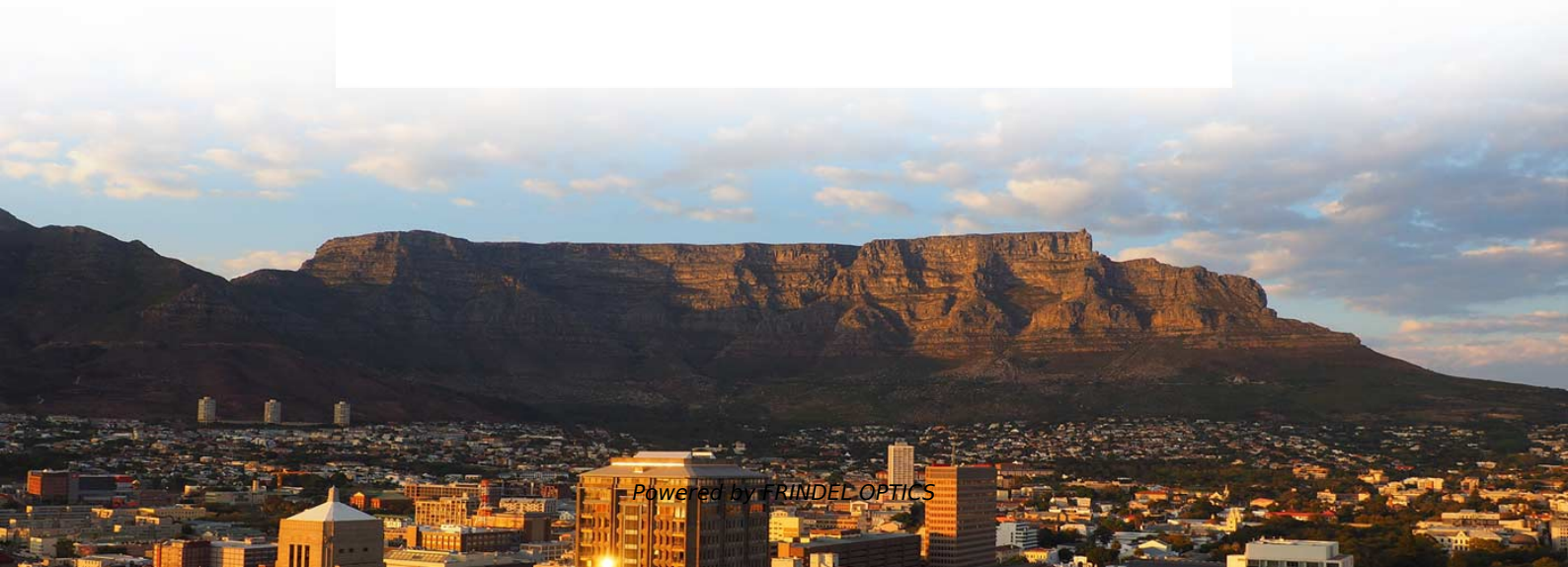


Installation Requirements for Tail Fiber Channel Support Frame





Installation Requirements for Tail Fiber Channel Support Frame



ITU-T Rec. L.163 (11/2018) Criteria for optical fibre cable

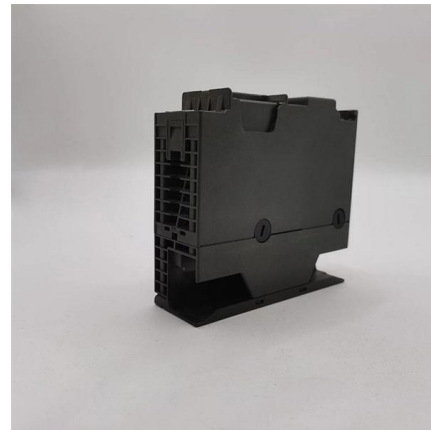
This Recommendation also describes how to mitigate the considerable risks and/or issues to which the optical fibre cable may be exposed when infrastructures are minimal during installation, maintenance

[Contact Us](#)

The FOA Reference For Fiber Optics -Outside Plant

Installers must follow local ordinances and customer requirements for the aerial cable plant. Cables on poles sharing electrical and telecom/CATV cables must be

[Contact Us](#)



Fibre Channel frame

In computer networking, a Fibre Channel frame is the frame of the Fibre Channel protocol. The basic building blocks of an FC connection are the frames. They contain the information to be transmitted

[Contact Us](#)

TECHNICAL MANUAL

Timber frame panels which arrive to site with additional elements e.g. external cladding or a non-transparent VCL will need to be assessed by the Warranty Innovations Team as meeting our

[Contact Us](#)



Lashed Aerial Installation of Fiber Optic Cable

an existing lashed fiber optic or copper cable. This method of aerial cable installation, "overlashing," is attractive because the expense of providing a separate suspens

[Contact Us](#)



Application Guide For FiberRunner Cable Routing System

A Cable Routing System is a collection of channels, fittings, and mounting brackets that can be assembled to create a structure that protects fiber optic and high performance copper data cabling

[Contact Us](#)



The Ultimate Fiber Optic Solutions for Next-Gen Data Centers

Explore essential tips on fibre optic infrastructure for modern data centers: cabling types, MMR design, testing protocols, and real insights from Ops Manager Stefano Meroli.

[Contact Us](#)



What is Fibre Channel? History, layers, components and

Explore Fibre Channel, a high-speed networking technology for transmitting data to SANs at rates of up to 128 Gbps, design, standards, benefits,

[Contact Us](#)



Fibre Channel Cabling

This webinar is for anyone with questions concerning cabling in a Fibre Channel environment, specifically those who are directly or indirectly responsible for SAN cable plant design

[Contact Us](#)



How to build a fibre network

Where you are self-installing the Openreach equipment we will supply the ONT and the single ended internal fibre cable (ezbend) you need. If you are installing the ONT opposite the cable entry hole,

[Contact Us](#)



Optical Fiber Cable Installation Guideline

Installation procedures for open placement of fiber optic cables are the same as for electrical cables. Care should be taken to avoid sudden, excessive force so as not to violate tensile load and radius

[Contact Us](#)



Underground Fiber Optic Cable Installation:

Explore the process and benefits of underground fiber optic cable installation. Learn how this infrastructure investment can elevate your internet

[Contact Us](#)



SPECIFICATION STANDARD OPTICAL FIBER BACKBONE

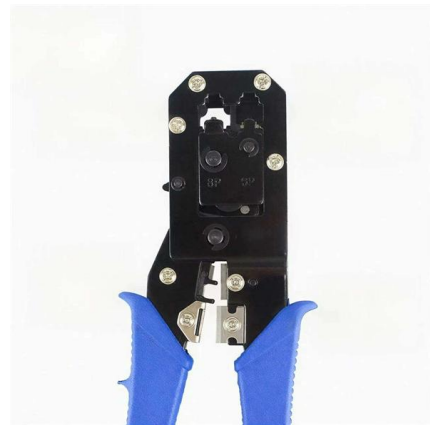
Installation, splicing, termination, testing, labeling and documentation of new inter building fiber optic communication cable between buildings as specified and on the drawings.

[Contact Us](#)

How to Hang Strut Channel Safely and Correctly

Learn step-by-step how to hang a strut channel with the right tools, hardware, and techniques. Ensure safe, code-compliant support for any installation.

[Contact Us](#)



FCoE Basics

FCoE can be implemented in stages non-disruptively on installed SANs. FCoE simply tunnels a full Fibre Channel frame onto Ethernet. With the strategy of frame encapsulation and de-encapsulation, frames

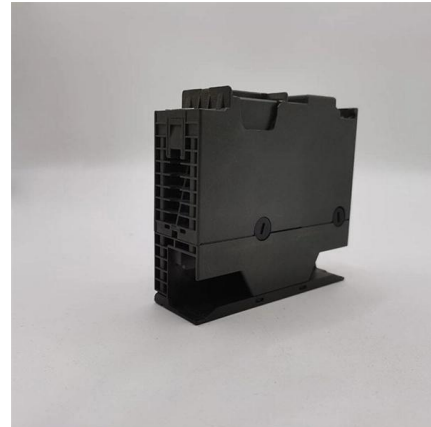
[Contact Us](#)

Knauf U Channel Perimeter Support



Disposal/Repair Separate metal from any non-metal components and recycle in accordance with local authority requirements.

[Contact Us](#)



Microsoft Word

1.3 Supporting Channel-to-Fitting Installations
Once FIBERRUNNER Cable Routing System fittings are introduced to the fiber pathway, the need for additional FIBERRUNNER Mounting Brackets will be

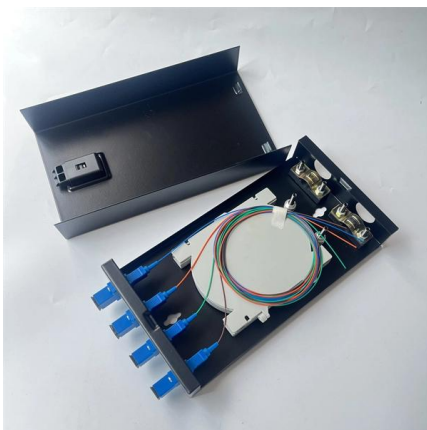
[Contact Us](#)

CDU Cabling & Communications Infrastructure Standards v3.1

The CDU Communications Infrastructure Standards & Specifications document specifies the minimum installation and operational requirements for Charles Darwin University cabling systems. These



[Contact Us](#)



OPTICAL FIBER DISTRIBUTION FRAME.cdr

NORDEN Fibre optic distribution frame is a high-capacity, high-density fibre distribution frame, suitable for the composition and distribution of fibres in optical access network to achieve the fibre optic lines

[Contact Us](#)



FDF Installation Guide

Read and understand this procedure (as well as the instructions provided with related assemblies) before beginning an installation. Do not discard this instruction; keep it on hand for future reference.

[Contact Us](#)



How to build a fibre network

In this case you have the responsibility of running the single ended internal fibre cable (ezbend) required inside the house in such a way that it is undamaged and complies with building regulations for the

[Contact Us](#)

The FOA Reference For Fiber Optics -Outside Plant

Deploying fiber above ground on poles or towers removes the need for underground digging and is particularly useful when the ground is uneven, rocky or both. Aerial

[Contact Us](#)



Design a Reliable and Highly Available Fibre Channel SAN

Fibre Channel is a fast and reliable data transport technology and can scale to meet the requirements of small and midsize businesses as well as large enterprises.

[Contact Us](#)



Cisco Nexus 7000 Series NX-OS SAN Switching

Some Fibre Channel protocols or applications cannot handle out-of-order frame delivery. In these cases, Cisco SAN switches preserve frame

[Contact Us](#)



FIBER OPTIC CONSTRUCTION STANDARDS

All State and County Road crossings shall meet the installation requirements outlined in the right of way permit issued by the authority having jurisdiction and construction design.

[Contact Us](#)

Design a Reliable and Highly Available Fibre Channel SAN

This document also presents recommended Fibre Channel fabric topologies and best practices for interconnecting networking devices to achieve a highly available implementation. An appendix is also

[Contact Us](#)



TR 076_Design of Mounting Channels

The material of the mounting channels, including channel bolts, and the corrosion protection shall be selected and demonstrated taking into account the environmental conditions at the place of

[Contact Us](#)



TR-3800: Fibre Channel over Ethernet End-to-End Deployment Guide

Fibre Channel over Ethernet (FCoE) is a protocol designed to seamlessly replace the Fibre Channel physical interface with Ethernet. FCoE protocol specification is designed to fully exploit the

[Contact Us](#)



Contact Us

For datasheets, pricing, or custom fiber access solutions, please visit:
<https://www.frindel.es>