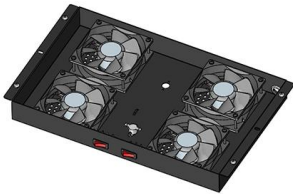


Inner bridge connection single busbar





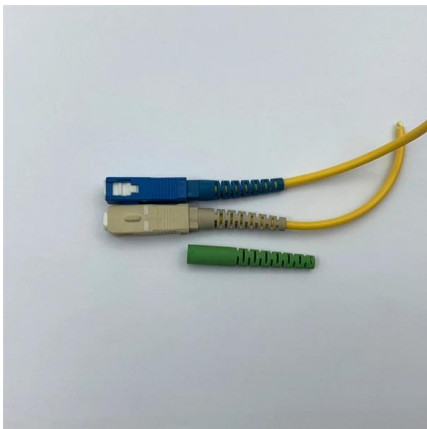
Inner bridge connection single busbar



High Power Converter Busbar in the New Era of Wide

The busbar is crucial in high-power converters to interconnect high-current and high-voltage subcomponents. This paper reviews the state-of-the-art

[Contact Us](#)



Types of Busbar Arrangements in Grid Stations and

The arrangement and connection of incoming and outgoing feeders in grid stations and substations and the number of busbars have a significant

Types of Power Bus Bar Connectors , TE Connectivity

Our connector mates to a 3.0mm thick plated busbar that provides a separable interface to ease assembly, inspection and troubleshooting. Ease of installation

[Contact Us](#)



POWER BUSBAR SOLUTION

POWER BUSBAR SOLUTION TE Connectivity's busbar solutions are typically made from aluminum or copper with electrical distribution applications in mind, with the ability to transmit high current power

[Contact Us](#)



Busbar Design for High-Power SiC Converters

Busbars are critical components that connect high-current and high-voltage subcomponents in high-power converters. This paper reviews the latest

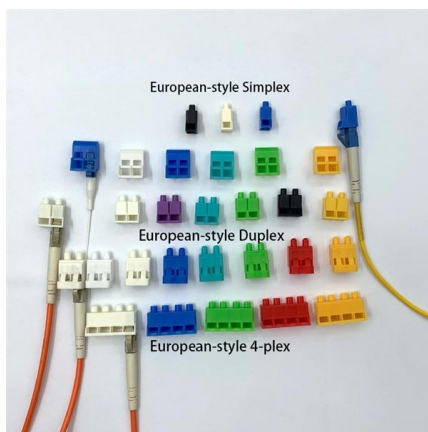
[Contact Us](#)



Busbars, internal routing, supports and expansion loops

Busbars Layout Summary in the Inner Triplet
 18kA round busbars for the quads and trim leads (N1)
 2kA round busbars for the orbit correctors (N2) N1

[Contact Us](#)



ZX2 Gas-insulated medium voltage switchgear

Voltage transformers ormers are plugged into inner cone sockets. These are removable or isolatable for Cable termination compartment with inner cone connectors Plug-in busbar connection Cable

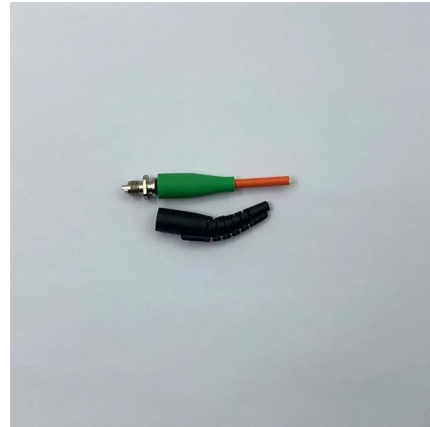
[Contact Us](#)



How are bus bars connected?

Learn about the different methods of connecting bus bars and how they are used in electrical systems. Get insights into the importance of proper bus

[Contact Us](#)



Busbar Design for High-Power SiC Converters

Busbars are critical components that connect high-current and high-voltage subcomponents in high-power converters. This paper reviews the latest busbar design

[Contact Us](#)

Busbar

Modular busbar systems for control panels consist of pre-engineered components designed to make power connections with common solid copper conductors. The system can be configured in varying

[Contact Us](#)



Single Bus vs Double Busbar Switchgear: Key Differences

Compare single-bus and double-busbar switchgear: cost, flexibility, reliability, maintenance, and which bus arrangement suits what facility.

[Contact Us](#)



New Busbar Technologies Provide Flexibility for Expanding

New BusMate™ Power Busbar Connector New-generation power applications are increasing in complexity and manifesting themselves in more compact forms. As such, conventional methods for

[Contact Us](#)



Flexible Busbars

Thanks to the flexibility of our busbars, it is possible to use one busbar model for different installation dimensions and to mount it in different applications.

[Contact Us](#)



Exploring the PCB Bus Bar in Modern Electronics

A PCB (Printed Circuit Board) bus bar refers to a conductive element integrated within a PCB design to efficiently

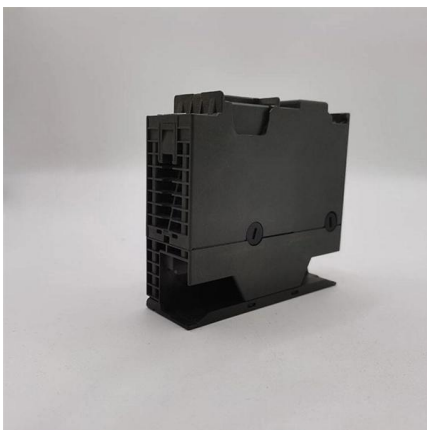
[Contact Us](#)



Busbar Systems

With the help of the circuit breaker in the coupling field, the two busbars can be connected to form a single node. This coupling is known as transverse coupling, and allows busbars to be changed

[Contact Us](#)

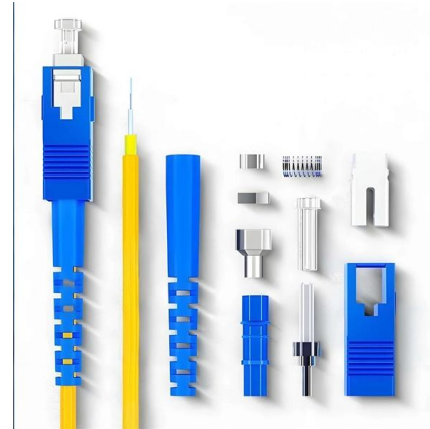




2CDC446001D0201

Technical data Busbar systems and installation accessories When connecting aluminum conductors, ensure that the contact surfaces of the conductors are cleaned, brushed and treated with grease. Re

[Contact Us](#)



"Busbar Systems"

With the help of the circuit breaker in the coupling field, the two busbars can be connected to form a single node. This coupling is known as transverse coupling, and allows busbars to be changed

[Contact Us](#)



Bespoke Busbar Systems

When package substations are required, the transformer within can be connected directly to the main LV switchgear via high-powered busbar systems that are

[Contact Us](#)



2025 Newest Guide to PCB Busbar and Design it on PCB

Part 1. What is PCB Busbar A PCB busbar can perform electrical conductivity between circuit boards, electronic components, power units, and

[Contact Us](#)





Busbars , Electrical Busbars & Copper Busbars , RS

Typically found inside industrial switchgear and control panels, busway enclosures and larger panel boards. They can also be used to connect high-voltage equipment.

[Contact Us](#)



TE Connectivity: Connectors & Sensors for a Connected, Sustainable

Hier sollte eine Beschreibung angezeigt werden, diese Seite lässt dies jedoch nicht zu.

[Contact Us](#)

Catalog Extract LV 10 · 10/2022

Our busbar systems for electrical installations offer a particularly easy way of fitting distribution systems with electrotechnical components. The modular design saves space, while quick assembly contacts

[Contact Us](#)



Busbar Design & Installation UK , A& T Enclosures Limited

A& T Enclosures specialises in custom busbar design and installation in the UK for a wide range of electrical distribution systems. With more

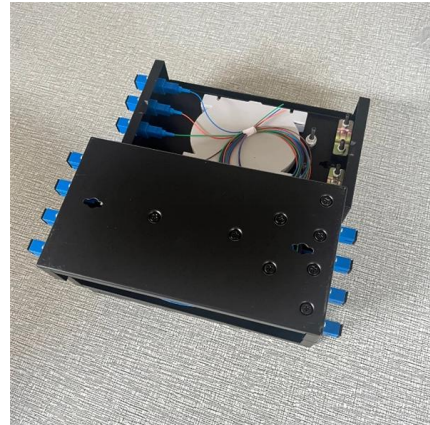
[Contact Us](#)



Busbar design application note

1.1 Definition of a busbar In battery packs for electric mobility, a busbar is used to connect battery cells or modules. In automotive battery packs, busbars are used to connect battery modules together.

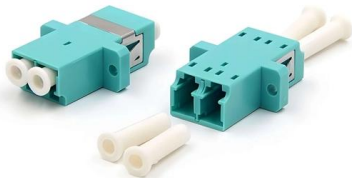
[Contact Us](#)



Primary Gas Insulated Switchgear, GHA, bus coupler, single busbar,

Single-use plastic definition is aligned with the Directive 2019/904/EC. Some orders may include plastic until stock runs out.

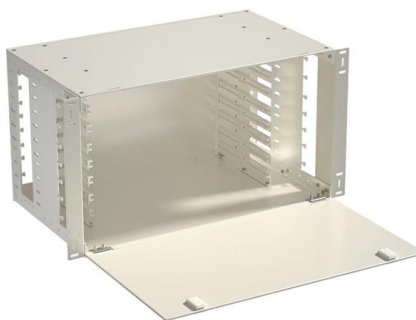
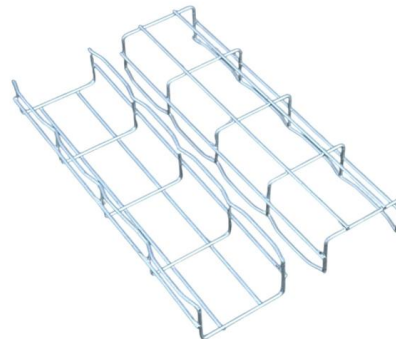
[Contact Us](#)



unibar M Busbar Trunking System Manual

The unibar M system is used to install a busbar trunking system based on the specific project: Hager is responsible for planning the individual busbar trunking system according to the specifications

[Contact Us](#)



Power Applications Using High-force Press-Fit

Fortunately, extensive testing has now been conducted on new high-force press-fit interconnects in copper busbars, including accelerated creep testing at high temperatures that allay these fears.

[Contact Us](#)

CN105006747A



Technical field Patent of the present invention relates to a kind of electric power system electrical main connecting wire structure, is specifically related to a kind of sectionalized single busbar connection

[Contact Us](#)



CN201877684U

The utility model relates to a kind of electrical main connecting wire structure, specifically is a kind of single busbar connection isolating switch segmentation wiring construction, is applicable to

[Contact Us](#)

Busbar Design: How to Spare Nanohenries

The aim of this paper is to start from the most basic busbar, a simple sheet, and to show the various impacts of a change in the geometry, on both current repartition in the plate, and impedance of the

[Contact Us](#)



Contact Us

For datasheets, pricing, or custom fiber access solutions, please visit:
<https://www.frindel.es>