

# **Industrial Ethernet-Grade Optical Module DML Selection Guide**





## Industrial Ethernet-Grade Optical Module DML Selection Guide

---

### STAINLESS STEEL WIRE MESH

Long-lasting and durable

Comprehensive specifications

Customized non-standard products



### 10G SFP+ LR DML 1310nm 10km Optical Transceiver Module (Industrial)

The GIGALIGHT 10G SFP+ LR optical transceiver module is used for long-distance transmission in the field of data communication or telecommunications, conforms to IEEE 802.3ae 10GBASE-LR

[Contact Us](#)

### Dell networking transceivers and cables

Dell Technologies provides optical and cabling options for each Ethernet speed. Long- and short-range optical connectivity options are suited to a wide range of data center and campus applications. For

[Contact Us](#)



### 25G SFP28 MWDM DML 10km/20km Optical Transceiver (Industrial)

The maximum transmission distance can reach up to 10 km or 20 km, and an industrial-grade operating temperature range is available as an option.

[Contact Us](#)

### Optical link module

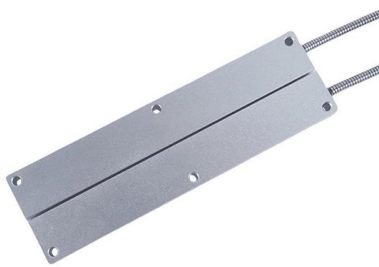
These operating instructions support you when commissioning PROFIBUS OLM devices (Optical Link Modules). These Operating Instructions are intended for personnel involved in the commissioning of



### Fiber Optic Cable Buying Guide , Eaton

Fiber Optic Cable Buying Guide Choosing single-mode or multimode fiber for high-performance data networking and telecommunications Fast data transmission,

[Contact Us](#)



### SFP module specification and selection guide (EN)

CXR SFP modules are based on industrial grade components to deliver higher reliability and to enable extended operating temperature range in any host equipment and integration conditions.

[Contact Us](#)

LoRa handheld portable base station



### Professional Guide to Industrial Optical Modules

There are several types of industrial grade optical modules, each designed for specific applications and environments. Some common types include fiber optic modules, Ethernet modules,

[Contact Us](#)





### 25G SFP28 MWDM DML 10km/20km Optical Transceiver (Industrial Grade)

GIGALIGHT 25G SFP28 MWDM optical transceiver modules for 5G fronthaul are compliant with the 25G Ethernet transmission protocol, and are also compatible with CPRI Option 10 and 25G eCPRI

[Contact Us](#)



### How to Differentiate and Choose Between EML and

EML (External Cavity Laser) and DML (Distributed Feedback Laser) lasers play crucial roles in optical modules used in optical communications and

[Contact Us](#)

### 50G SFP56 ER EML 1310nm 40km Optical Transceiver (Industrial Grade)

GIGALIGHT 50G SFP56 ER optical transceiver module is used for 5G fronthaul, conforms to IEEE 802.3cn 50GBASE-ER Ethernet transmission protocol, and is compatible with 50G eCPRI

[Contact Us](#)



### This guide is arranged to help the user select cabling based on the

This document will help the reader to select connectivity components based on zero mitigation. Mitigation is a method of converting one environment into a less harsh environment. Further, this

[Contact Us](#)

### How to Distinguish and Choose Between



## EML and DML

DML lasers have the advantages of low cost, low power consumption, and easy integration, and are widely used in optical fiber

[Contact Us](#)



## QUALISCAN QMS-12

QUALISCAN QMS-12 A modular system for measuring, logging and controlling critical parameters over the entire process including basis weight, coating weight, moisture, layer thickness and many more.

[Contact Us](#)



## SFP Optical Module Selection Guide for 2025: Key

Explore our comprehensive SFP optical module selection guide for 2025. Learn about crucial factors like data rate, distance, fiber type, and

[Contact Us](#)



## FIBER OPTICS FOR INDUSTRIAL APPLICATIONS

With the patented digital diagnostic capabilities on the trans-ceivers, the Ethernet Switch can monitor the link character-istics, such as receive optical input power, and provide early warning alarms to

[Contact Us](#)



## Multimode Optical Fiber Selection & Specification

Both dispersion (optical pulse broadening) and optical loss (whether it is fiber attenuation or passive component insertion loss) affect overall system bandwidth. Bandwidth is essentially the information

[Contact Us](#)



## Optoelectronic Solutions

Each of these product families includes variants specifically tailored for the unique needs of data centers, enterprise networks and telecom optical systems operating up to 800 Gbps and beyond.

[Contact Us](#)

## 5 Minutes To Understand The Types Of Lasers In

Summarize The selection and use of optical modules are completely different according to different scenarios. The most important thing is to select the

[Contact Us](#)



## What is an SFP Optical Module? The Complete Guide to

The complete technical guide to SFP optical modules (SFP, SFP+, SFP28). Understand the core function, compare data rates (1G to 25G), learn

[Contact Us](#)



### **Dr. Schetter BMC Industrielle Ethernet Produkte**

Advantech's Small Form-factor Pluggable (SFP) transceiver family is available with a variety of different types, allowing users to select the appropriate transceiver for each link to provide the required optical

[Contact Us](#)



### **NEXT GENERATION OPTICAL INTERFACES**

Basic design is based on HL13B5 with high reliability and high productivity.

[Contact Us](#)



### **100G QSFP28 LR4 DML LWDM4 10km/20km Optical**

100G QSFP28 LR4 DML LWDM4 10km/20km Optical Transceiver GIGALIGHT 100G QSFP28 LR4 optical modules are used for long-distance transmission in the



### Optical modules for AI/ML reliability: the selection playbook

Learn how we selected optical modules for an AI/ML cluster, balancing IEEE compliance, reach, power, DOM telemetry, and real uptime. Includes specs, pitfalls, and ROI.

[Contact Us](#)

### NEXT GENERATION OPTICAL INTERFACES

Summary The components for the next speed are coming: DML chips for the module industry EML chips for the module industry InP PICs for coherent transmission InP packaged components for coherent

[Contact Us](#)



## Contact Us

---

For datasheets, pricing, or custom fiber access solutions, please visit:  
<https://www.frindel.es>