

Indonesia Single-Fiber Bidirectional Anti-Tracking





Indonesia Single-Fiber Bidirectional Anti-Tracking



Comprehensive Guide to SFP BiDi 10G 40km Modules: Selection

Discover Link-PP's reliable and compatible SFP BiDi 10G 40km modules for high-speed, cost-effective single-fiber 10G networks. Learn about selection tips, wavelength pairing, installation

[Contact Us](#)

2025 SFP vs. BiDi SFP: Key Differences and Applications in Networking

The BiDi SFP Transceiver The BiDi SFP (Bidirectional SFP) is a more advanced type of transceiver that allows bidirectional communication over a single optical fiber. This is achieved by

[Contact Us](#)



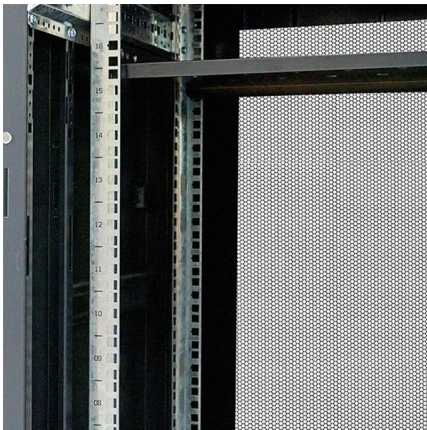
First Demonstration of Distributed Characterization over 100 km Anti

We demonstrate real-time monitoring of 80x800-Gb/s PCS-16QAM widened C+L-band WDM transmission over 100 km HCF using a specifically-designed on-line FDM-OTDR, achieving a 40-dB

[Contact Us](#)

Bidirectional mode-locked all-normal dispersion fiber laser

Therein, bidirectional mode-locked fiber lasers (MLFLs) are particularly promising for their cost effectiveness, system compactness, and environmental



Demonstration of Single-span 100km Hollow Core Fiber Bidirectional

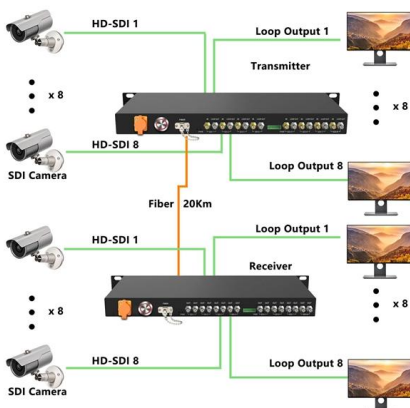
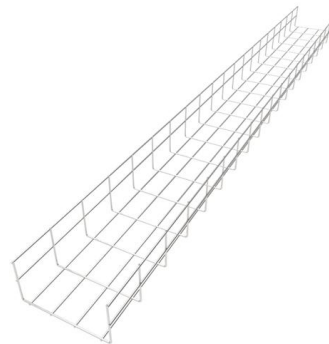
We demonstrate a bidirectional transmission using real-time $\$1 \text{ Tb} / \text{s} / \lambda$ transponders over single-span 100 km HCF with attenuation co

[Contact Us](#)

Use of a single fiber cable to implement the bidirectional

A single-mode fiber was used not only for sensing the intrusion-induced disturbance but also for transmission of pump and signal lights.

[Contact Us](#)



502.6 Tbit/s S+C+L-Band Transmission in Anti-Resonant Hollow-Core

Abstract: We experimentally demonstrate a record-breaking high-capacity transmission in self-developed wideband 11.04-km anti-resonant hollow-core fiber (AR-HCF).

[Contact Us](#)



Launch of Power Optimization in Single-Fibre, Single-Wavelength

As mobile transport networks evolve, the need for high-capacity, single-fibre bidirectional (Bi-Di) transmission links becomes increasingly critical to maintain strict timing and synchronization

[Contact Us](#)



Integrated Sensor-Optics Communication System Using

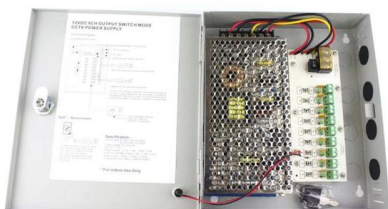
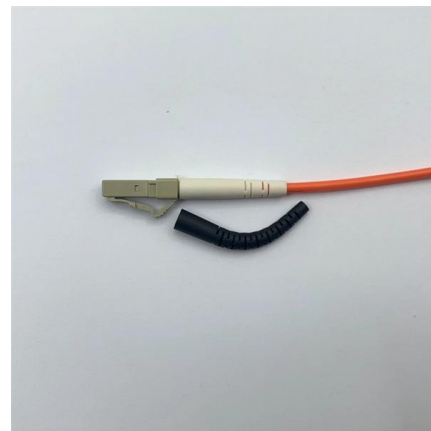
This paper introduces a new bidirectional integration approach that combines fiber sensor/free space optics (FSO) communication using an intensity

[Contact Us](#)

What the Standards Say about Bi-directional OTDR Testing

This blog is part of a 7-part series on bidirectional fiber testing. The rest of the series can be found here: Why Perform Bi-directional Fiber Testing?

[Contact Us](#)



Use of a single fiber cable to implement the bidirectional

Use of a single fiber cable to implement the bidirectional MZ sensing system. The success of any perimeter intrusion detection system depends on three important

[Contact Us](#)



Impact and Mitigation of Reflections in 400G Single-Fiber Bidirectional

Abstract: We perform experimental evaluation and analytical modelling of the sensitivity penalty caused by discrete and distributed reflections in 400G single-fiber bidirectional coherent

[Contact Us](#)



Single Fiber vs Dual Fiber Transceivers Understanding

Single fiber transceivers, like the Bidi Transceiver, use one fiber for bidirectional data, while dual fiber transceivers require two fibers for separate TX

[Contact Us](#)

273.6 Tbit/s real-time S + C + L-band same-wavelength

In this Letter, we present the first, to the best of our knowledge, demonstration of S + C + L-band same-wavelength bidirectional transmission in

[Contact Us](#)



ADSS Fiber Cable Color Code Guide

This document describes an ADSS fiber optic cable rated for spans of 100m to 1100m. The cable consists of loose tubes containing single mode fibers

[Contact Us](#)



The Role of Fiber Optics in Indonesia's Connectivity

Indonesia, a vast archipelago, is actively innovating its technology sector to overcome unique geographical and demographic challenges. This isn't

[Contact Us](#)



Boost Network Capacity with BiDi WDM Technology

Unlock higher speed and efficiency with single-fiber BiDi WDM -- cut fiber use, costs, and power consumption.

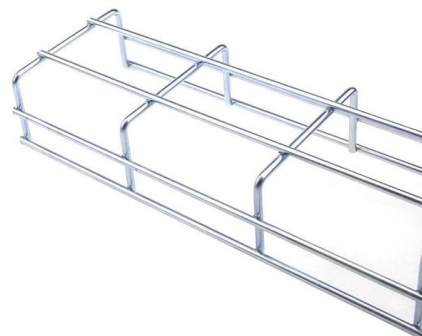
[Contact Us](#)



BiDi (bidirectional traffic on a single fiber)

Bidirectional traffic on a single fiber, commonly referred to as BiDi, is a technology that enables data transmission in both directions using a single fiber optic cable. It is also known as

[Contact Us](#)



Bidirectional OTDR Testing: Multimode VS. Singlemode Fibers

One of the OTDR's principal attractions is that it can provide detailed analysis with a single-ended test, requiring just one technician and one test set. However, this approach is really only sensible in

[Contact Us](#)





India initiates anti-dumping probe against imports of optical fibre

India has initiated an anti-dumping probe against imports of a certain type of optical fibre from China, Indonesia and South Korea following a complaint by a domestic player. The duty is

[Contact Us](#)



Single-Fiber Bidirectional Transmission using 400G Coherent Digital

We experimentally evaluate the Rayleigh Back-Scattering power penalty in a single-fiber single-wavelength bidirectional link using coherent digital subcarrier-based transceivers and verify a

[Contact Us](#)



Demonstration of Single-span 100km Hollow Core Fiber Bidirectional

We demonstrate a bidirectional transmission using real-time 1Tb/s/? transponders over single-span 100km HCF with attenuation coefficients

[Contact Us](#)



Bidirectional Fiber

Bidirectional Fiber refers to a type of optical fiber communication technology that enables data transmission in both directions on a single fiber strand. This contrasts with traditional fiber

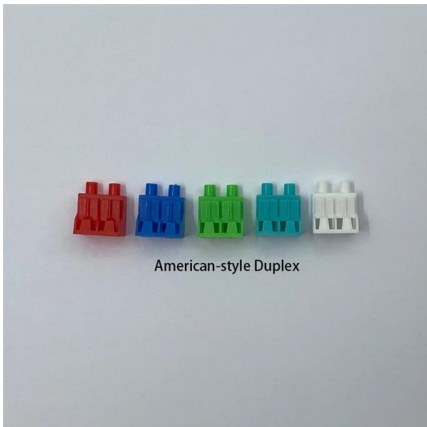
[Contact Us](#)



Bidirectional OTDR Testing: Multimode vs. Singlemode Fibers

The physical principles that underpin bidirectional OTDR averaging on singlemode links do not apply to multimode fibers. Because of the way in which light propagates along multimode fiber spans, it is

[Contact Us](#)



Unifiber - Indonesia's Leading Fiber Optic Infrastructure

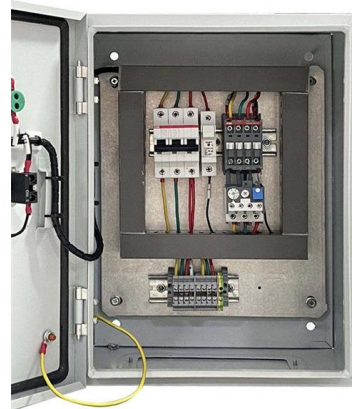
Unifiber menyediakan infrastruktur FTTx, NNI, dark fiber, dan layanan fiber optic untuk ISP & enterprise dengan jangkauan lebih dari 1.5 juta home-passed di

[Contact Us](#)

Bidirectional Radio Over Fiber with Millimeter Wave to Support 5G

The millimeter wave-based bidirectional Radio over Fiber (RoF) technology is prospective for 5G fronthaul due to its reliable link performance. However, dispersion has become an issue in obtaining

[Contact Us](#)



What is the Difference Between SFP and BiDi SFP?

Overview: Understanding the difference between SFP (Small Form-factor Pluggable) and BiDi SFP (Bidirectional SFP) transceivers is crucial for

[Contact Us](#)



BiDi (bidirectional traffic on a single fiber)

In summary, BiDi technology is a technology that allows data transmission in both directions using a single fiber optic cable. It is a useful technology for network operators who wish to

[Contact Us](#)



Contact Us

For datasheets, pricing, or custom fiber access solutions, please visit:
<https://www.frindel.es>