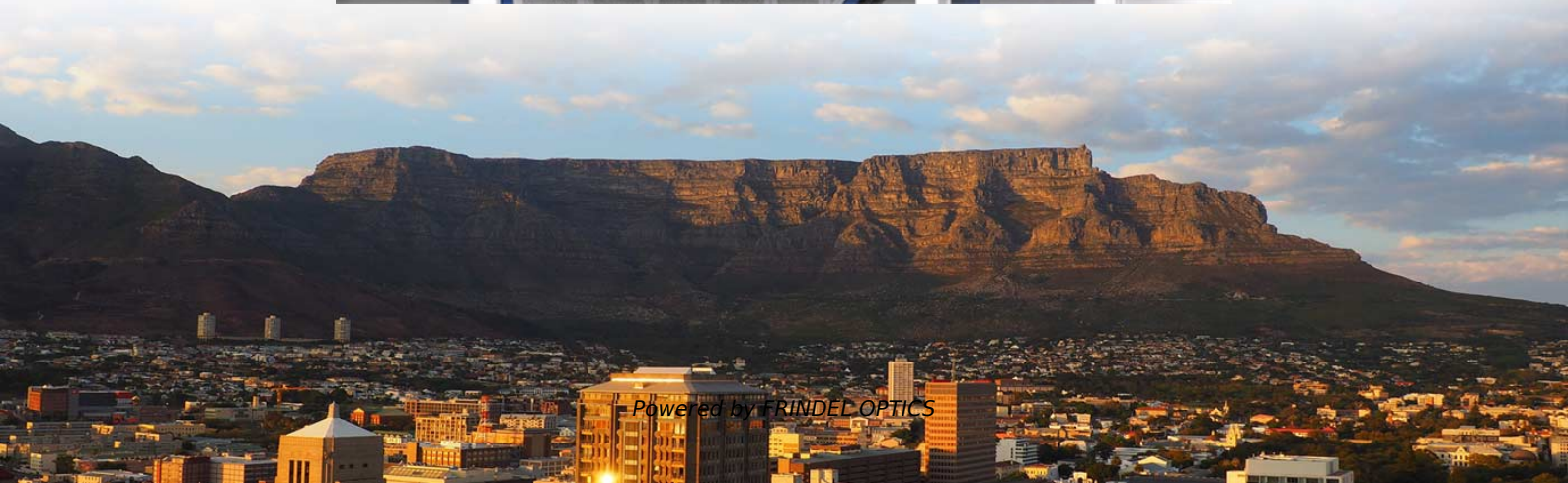
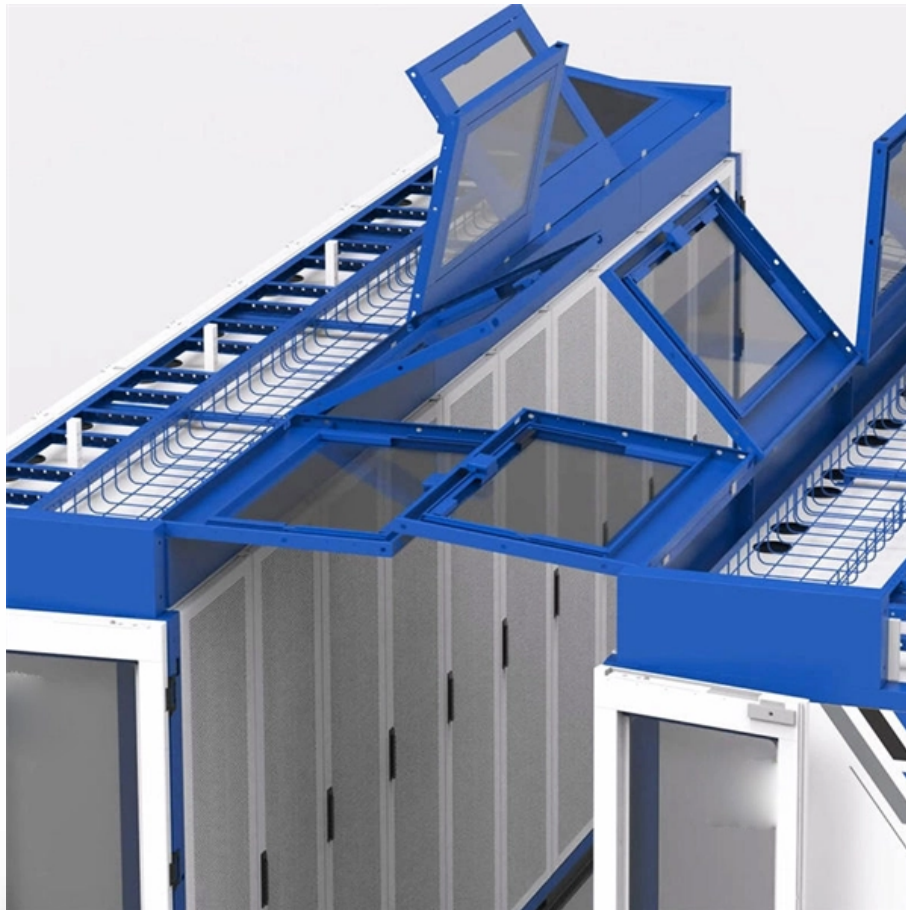


# **Incoming electricity meter model and distribution box specifications**





## Incoming electricity meter model and distribution box specifications

---



### TECHNICAL SPECIFICATION OF THREE PHASE METER BOX

1.0 SCOPE: This specification covers design, manufacturing, testing at works and supply of Three Phase Meter Box. The Meter Box shall be made out of CRCA M.S. Sheet confirming to IS: 13947 or

[Contact Us](#)

### Distribution Box and Selection Guide

This guide provides information on how to select the appropriate Distribution Box for Electric project. If you have any questions about distribution

[Contact Us](#)



### DISTRIBUTION BOARDS CATALOG

Use of BAHRA breakers of high specification with high interrupting capacity secures the highest safety standards. It also increases durability and helps the product withstand electrical shocks.

[Contact Us](#)

### TECHNICAL SPECIFICATION FOR LT DISTRIBUTION BOX

General Technical Particulars for LT Distribution Boxes : - The L.T. Distribution Boxes should be of the dimensions as per the drawing & details in the table furnished.



### Meter specifications

The specifications contained in this section are subject to change without notice. For installation and wiring information, refer to the meter installation sheet.

[Contact Us](#)



### TECHNICAL SPECIFICATION I.R.O. 63,100,160 & 315 KVA

Distribution Boxes shall have Isolator (Switch Disconnecter) on incoming circuit and Porcelain CUTOOUT fuse base disconnecter on outgoing circuits with necessary interconnecting Bus Bars.

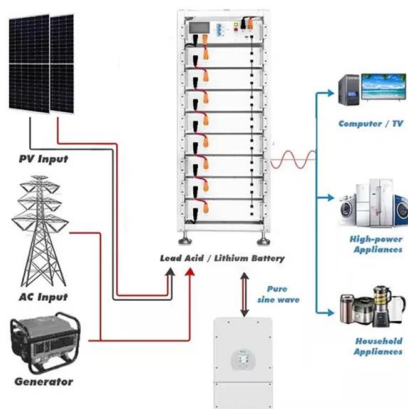
[Contact Us](#)



### Distribution boards components

Distribution boards (generally only one in residential premises) usually include the meter (s) and in some cases (notably where the supply utilities impose a TT earthing system and/or tariff

[Contact Us](#)

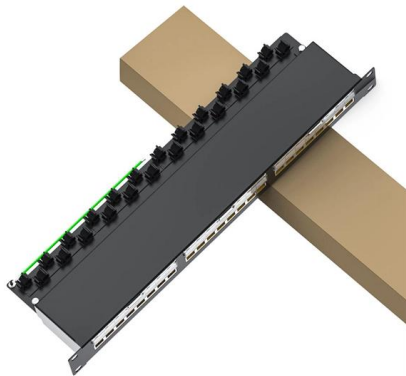




## TECHNICAL SPECIFICATIONS FOR A. C. DISTRIBUTION BOARD

SCOPE: This specification covers the design, manufacturing, testing at works and supply of Indoor type A.C. Distribution Boards for power supply to yard lighting, Battery charger, 33 kV substation

[Contact Us](#)



### Specifications and technical guide

Available with a large communication panel (pulse / Modbus), it enables the metering structure to be adapted to any new or existing installation while providing essential information for the analysis of the

[Contact Us](#)

### Annexure A Supplying and installation of LT Panel in the Central

Annexure -A Supplying and installation of LT Panel in the Central Block electrical power distribution room

[Contact Us](#)



### Distribution Box - Astryd Power Pvt. Ltd.

Distribution Box Distribution Box A distribution box is an essential component in electrical systems, serving as the central point for distributing electricity to various circuits, appliances, and devices

[Contact Us](#)



## Specifications and technical guide

Specifications 80 A meter intended for sub-metering for tertiary applications. Available with a large communication panel (pulse / Modbus), it enables the metering structure to be adapted to any new or

[Contact Us](#)



## TECHNICAL SPECIFICATION FOR LT DISTRIBUTION BOX

This specification covers design, manufacture, assembly, testing at manufacturer's works, supply and delivery at site of all terminal connectors of 33KV equipment (mainly breaker, isolator,

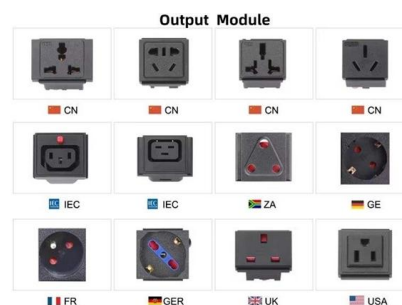
[Contact Us](#)



## What Is a Meter Box? A Complete Guide to Types,

Learn what a meter box is, why it matters for electrical safety, its types, components, standards, and best installation practices for long-term reliability.

[Contact Us](#)



### Why Choose Us

- 20 Years of OEM/ODM 20 Year history manufacturing experience.
- Professional R & D team 10 years experience in OEM/ODM electronic engineer.
- Fully Certified Our are certified CE, FCC, RoHS, ISO9001, ISO14001, ISO13168, etc.
- Timely Delivery 22 production lines, 500+ employees, timely delivery guaranteed.
- Quality Assurance Professional QC team with full process inspection.
- After-sales service After-Sales Service for Customer Satisfaction.

## 31-SDMS-07C

SPECIFICATIONS FOR LOW VOLTAGE DISTRIBUTION PANEL WITH ALUMINUM BUS BAR, MAIN CIRCUIT BREAKER AND 300A OUTGOING MCCBs. This document contains proprietary

[Contact Us](#)



**Microsoft Word**

This specification covers the technical requirements of design, manufacture, testing at manufacturer's works, packing, forwarding, supply and unloading at store/site and performance of single phase

[Contact Us](#)



**2013**

In the above context, the General Specification for Electrical Works (Internal) aims to lay down General guidelines to ensure safe, efficient, reliable and economical use of electricity.

[Contact Us](#)



**Distribution Boards**

Easy Installation of outgoing The design of the pan assembly facilitates the installation of outgoing devices. Availability of mixing Mixing two different types of outgoing devices can be provided in

[Contact Us](#)



**Distribution Boards**

ABB is driving progress for utilities through providing solutions for electrical distribution, and helping make a safer, more productive, and more efficient environment

[Contact Us](#)





## TECHNICAL SPECIFICATION FOR 3 PHASE, 4 WIRE A

The meter should be 3 phase 4 wire type suitable for connection to LT 3 x 240V, 3 phase 4 wire systems. The meter shall be suitable for balanced as well as unbalanced load at all power factors i.e.

[Contact Us](#)



## Outdoor Electrical Distribution Box Specifications: NEC

This specification guide provides system designers, electrical engineers, and procurement professionals with the technical criteria needed to

[Contact Us](#)

## ST\_240-75659760 Rev 3 Pole top metering kiosks\_

2.1.1 Purpose This standard specifies Eskom's requirements for pole-mounted service distribution boxes for split prepayment metering. This standard also sets out Eskom's requirements for the

[Contact Us](#)



## MATERIAL SPECIFICATIONS CELL

The base and cover of Multi-meter box shall be individually in one piece except for fixing of accessories like hinges, clamp, handles etc, CRCA MS Fabrication and all metal part shall be Zinc -Passivated.

[Contact Us](#)



## 240V Meter Centres Product Catalog Extract

Offering the maximum versatility to meet all your needs, Siemens 240V meter centres are designed for single phase three wire 120/240V AC or three phase four wire 120/208V AC

[Contact Us](#)



### Annexure

1. Scope of Supply This specification covers the following for Single Phase 240 V, 10A-60 A Static Watt hour smart meters of accuracy class 1.0 with plug in communication modules (RF mesh only and RF

[Contact Us](#)

### Technical Specifications for Outdoor LT Distribution boxes with

Scope: The scope of this specification covers Weather / Vermin proof LT distribution boxes (LTD) with controllers, MCCB, MCB, Bus bars, Contactors, CT's, Energy Meter, LT gas filled fixed capacitor, DC

[Contact Us](#)



### CEB DISTRIBUTION CONSTRUCTION STANDARDS CEB:DCS-2:2021

1 INTRODUCTION Electricity distribution has developed rapidly and various systems have been adopted with different pole sizes and materials for service connection construction. Standardization

[Contact Us](#)



## Contact Us

---

For datasheets, pricing, or custom fiber access solutions, please visit:  
<https://www.frindel.es>