

# **Hungarian Instrument Explosion-proof Distribution Box**





## Hungarian Instrument Explosion-proof Distribution Box

---



### Distribution Box Panel Explosion Proof: Keamanan

Spesifikasi BM (D)X-Series Explosion Protected Distribution Box adalah box panel dari Helon Indonesia untuk pendistribusian sistem listrik yang

[Contact Us](#)

### BM (D)X-Series Explosion Protected Distribution Box

BM (D)X-Series Explosion Protected Distribution Box Explosion protection -IECEX (IEC) -ATEX (CENELEC,EN) -China Ex (GB) Application in hazardous area

[Contact Us](#)



### Terminal and Junction Boxes , Explosion Protection

Terminal boxes and junction boxes from Pepperl+Fuchs are designed to protect signal and power distribution networks in explosion-hazardous and challenging environments.

[Contact Us](#)

### Ex Junction Boxes and Atex Enclosures - Atex Delvalle

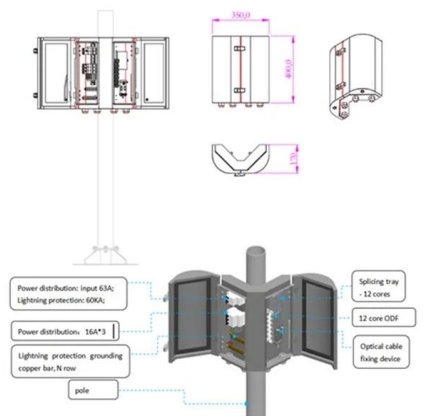
Our explosion protection Ex enclosures and equipment are comprehensive and widely configurable. Reliable in use and convenient to install, their overall quality



**explosion protected / proof electrical equipment ATEX**

Our products are intended for use in potentially explosive atmospheres of gases, vapors and dust in industries such as refineries, offshore installations,

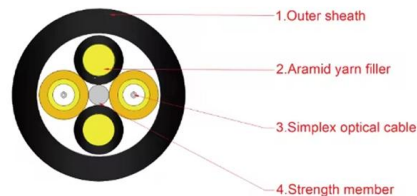
[Contact Us](#)



**Box Enclosures & Distribution Panels**

Home / Category Lightings Control Equipment Installation Equipment Cable Gland and Pipe Fittings AC & Ventillation System Distribution Boxes and Empty

[Contact Us](#)



**Ex Local Control Stations & Distribution Boxes**

Atexdelvalle offers world-class explosion-protected solutions guaranteeing highest quality and performance with no compromise. Manufacture custom made Local

[Contact Us](#)

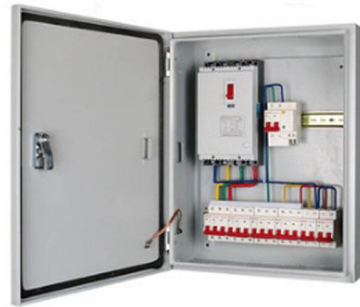




## Explosion-Proof Distribution Box , Product Center

Explosion-proof distribution boxes are designed to safely control and distribute electrical power in hazardous environments, preventing ignition risks.

[Contact Us](#)



### **BXM (D)51 Series Explosion proof Distribution Boxes**

BXM (D)51 Explosion proof Distribution Boxes  
Explosion protection to -CENELEC -IEC -NEC Can be used in Zone 1 and Zone 2 Zone 21 and Zone 22 Class I, Zone

[Contact Us](#)

### **Full Guide on Explosion-Proof Distribution Panel**

Explosion-proof distribution panels are vital components in hazardous industrial environments, ensuring safety by preventing electrical equipment from igniting

[Contact Us](#)



### **How to Wire an Explosion-Proof Distribution Box and**

Explosion-proof electrical equipment, such as explosion-proof distribution boxes, is specifically designed for hazardous environments where flammable gases,

[Contact Us](#)



## Ex Equipment

ROSE Aluminium, Polyester and Stainless-Steel Ex Enclosures and Control Stations assure reliable protection for electrical distribution systems in explosion

[Contact Us](#)



## Explosion Proof Enclosure Comprehensive Guide

Explosion-Proof Distribution box: These smaller components are structurally similar to distribution cabinets. You can use these for the distribution

[Contact Us](#)



## Ex Local Control Stations & Distribution Boxes

Atex control stations, explosion protected control units and distribution boxes made stainless steel maritime grade AISI 316L or AISI 304L. Atex Delvalle provides a

[Contact Us](#)



## ATEX products intended for in electrical heat tracing

tracing system is much more than just the heating cable. TEP Ex provides the explosion proof distribution boards and junction boxes for diff rent types of heating cables and for temperature

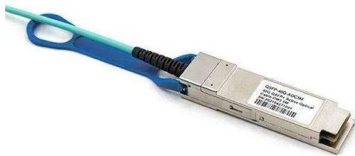
[Contact Us](#)



## Terminal Box/Explosion proof electrical equipment/global certification

Terminal Box KHJ offers a large selection of terminal boxes and junction boxes for wiring connection in explosion hazardous areas. They are certified according to the latest ATEX and IEC EX standards.

[Contact Us](#)



## Ex Enclosure Systems

For electrical distribution in potentially explosive atmospheres, ROSE Ex enclosures made of aluminum, polyester and stainless steel, as well as Control Stations,

[Contact Us](#)

## GUB Aluminium Ex d Junction Box

The GUB A range of explosion proof enclosures has been designed to meet the main requirements of power distribution, monitoring and signaling, and other electrical functions inside the hazardous area

[Contact Us](#)



## Explosion-proof junction Boxes , Cortem S.p.A.

The explosion-protected junction and pulling boxes, available in different methods of protection and materials, can also be used with terminals, as a command and

[Contact Us](#)



## Ex-Proof & Flameproof Enclosures & Junction Box , Supermec

Ex-Proof & Flameproof Junction Boxes & Enclosures Supermec ATEX Junction Box & Enclosures are designed to satisfy most of our clients' requirements for CONTROL explosion-proof and flameproof

[Contact Us](#)



## DISTRIBUTION BOARDS

Extol International are the leading suppliers of Control Panels & Distribution Boards for hazardous areas and explosive atmospheres - a comprehensive range of Explosion Proof control panels are available

[Contact Us](#)

## Terminal boxes , Junction boxes , Ex , Ex e , Ex d , ATEX , Explosion

Safely conduct, connect and distribute energy in hazardous areas with R. STAHL's terminal boxes. We offer bespoke, custom-made terminal boxes and terminal box combinations, as well as standard

[Contact Us](#)



## GRP Ex Terminal Boxes

HTB1P terminal boxes, made of glass fibre reinforced polyester (GRP), are designed for use in explosive atmospheres: Zones 1, 2 (gases) and 21, 22 (dusts). They

[Contact Us](#)



- IP65/IP55 OUTDOOR CABINET
- OUTDOOR TELECOM CABINET
- OUTDOOR ENERGY STORAGE CABINET
- 19 INCH



## Ex Junction Boxes and Atex Enclosures - Atex Delvalle

Our Atex Delvalle's Ex junction boxes and large enclosures are flameproof and prepared for use them in explosive atmospheres zones 1,2,21 and 22. ATEX

[Contact Us](#)



### Full enclosures

This new approach of plant operations called for a redesign of classic instrument protection cabinets which are made from glass reinforced polyester (GRP),

[Contact Us](#)



### Explosion-Proof Distribution Box

The distribution box (explosion-proof) is an aluminum alloy housing, electrostatic spraying, in accordance with the explosion-proof provisions of GB3836.2-2000,

[Contact Us](#)



## Contact Us

---

For datasheets, pricing, or custom fiber access solutions, please visit:  
<https://www.frindel.es>