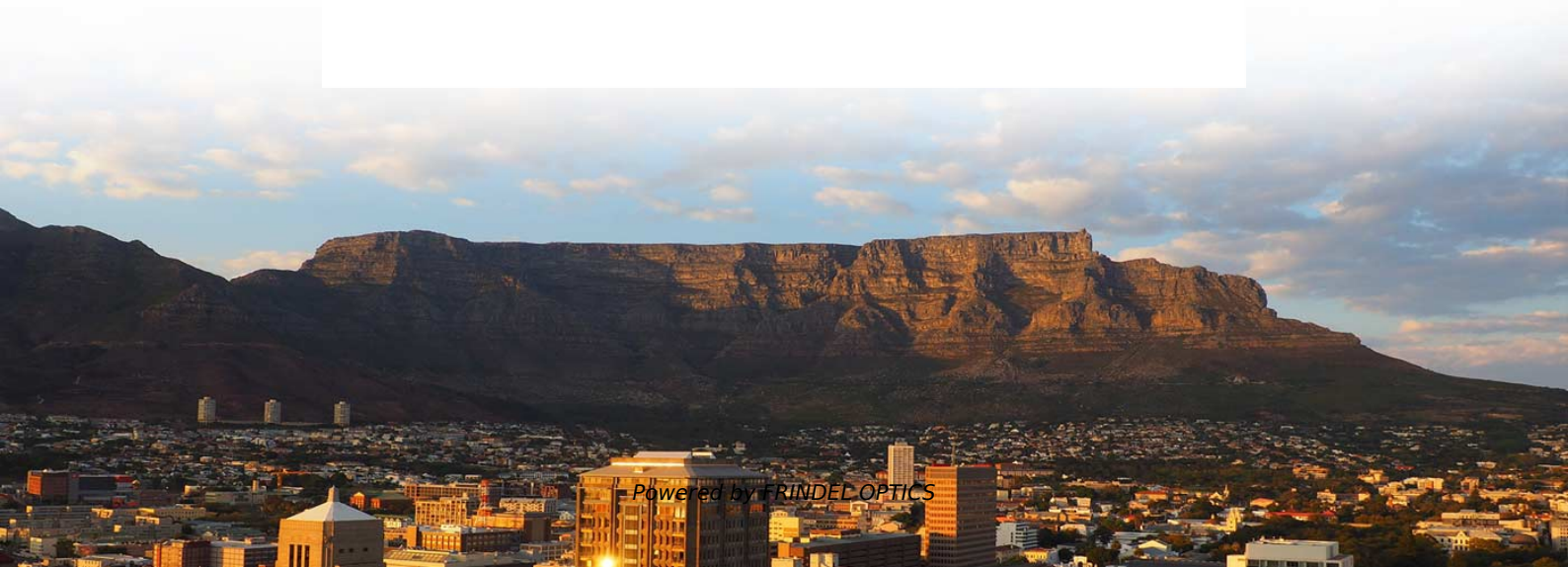


# **How to find the light source when manually coupling the collimator**





## How to find the light source when manually coupling the collimator

---



### Optics Manufacturer & Supplier , Imaging Lens & Laser Optics

Created Date 12/10/2022 5:39:00 AM

[Contact Us](#)

### Edmund Optics

The light rays pass through the reticle and are collimated (rendered parallel) by the objective lens. The image of the reticle appears at infinity. Different methods of SOURCE FIGURE 4 Basic collimator

[Contact Us](#)



### What is the best way to collimate light emitted by a LED?

From lenses to mirrors, to what type of led to use, there's pretty much an infinite different ways to approach this and I needed to get the idea out there, so others could share their insight. Feel free to

[Contact Us](#)

### Practical Collimation of multimode fibers

Practical collimation Practical collimation for single-mode, PM and multimode fibers. Schäfter+ Kirchhoff ships all collimators prealigned and collimated for either a specific wavelength defined by the



### Understanding Collimation to Determine Optical Lens Focal Length

Understanding Collimation to Determine Optical Lens Focal Length Collimated light occurs when light rays travel parallel to each other. Monica Rainey, Optical Engineer, explains how to collimate a divergent light source, and how to use collimated light to determine the focal length of a simple optical lens.

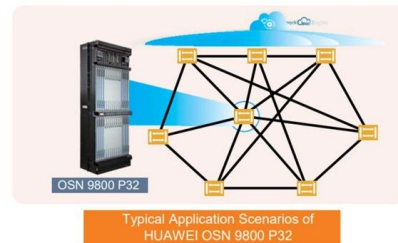
[Contact Us](#)



### The information contained in this document is property of Chaoxing

SN is 1d34 Find 1d34, then copy the string of 0 0 165.27 1218.68 Copy the text for your camera serial number (select and Cntl-C or Edit/Copy). software you downloaded (OCAL Electronic Collimator for g

[Contact Us](#)



### Practical Collimation of multimode fibers

The following describes some tricks and tips for the collimation adjustment of single-mode, PM or multimode fibers. Please note that single-mode and PM collimation is significantly different than

[Contact Us](#)

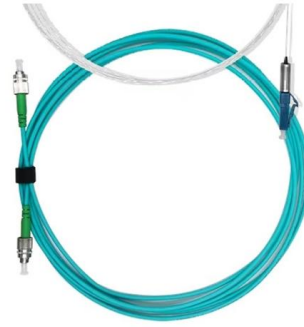




## Collimation / Coupling

Thorlabs offers a variety of fiber collimation and coupling solutions. FiberPorts can be used to provide a stable platform for coupling light into and out of FC/PC, FC/APC, or SMA terminated fiber with five or

[Contact Us](#)



### A Beginner's Guide to Collimation

I've been building and using telescopes for more than three decades and I'll share with you a secret: collimating a Newtonian reflector is easy. So why

[Contact Us](#)

### Fiber Coupling to Polarization-Maintaining Fibers and Collimation

Fiber cables can be compared using the comparison function. Once the adequate fiber is found, key information can then be downloaded and used as basis for deciding other fiber optic components e.g.

[Contact Us](#)



### Advanced Tutorial - Designing a Collimator for an LED Source

Light that is directed at lower angles is redirected using a central convex lens exit, positioned by a shaft from the collimator exit surface. As a side note, this shaft also helps minimize the amount of material

[Contact Us](#)



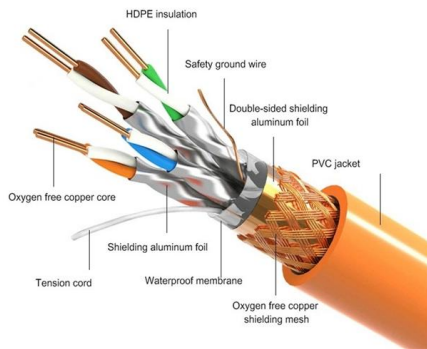
## A Beginner's Guide to Collimation

Look into your collimation cap and you'll see its underside reflected in the primary mirror. Notice the reflection of the little hole in the collimation cap that

[Contact Us](#)



### PRODUCT DETAILS



## How to Collimate your Telescope in 90 seconds using a

Collimating a telescope is pretty easy, especially if using a laser, but first-timers might get confused by this simple process and end up breaking one of

[Contact Us](#)

## Fiber Collimators - lens, collimated beam, focal length,

Fiber couplers are also used for fiber-to-fiber coupling: Light from the first fiber is collimated with a fiber collimator and then focused into the second fiber by

[Contact Us](#)



## Edmund Optics

Conditions preventing use of collimators 'were not only confined to bad weather, but on good, clear days problems were also encountered. The bright, hot afternoon sun caused optical illusions; visible heat

[Contact Us](#)



## Astro Babys Guide to Collimation

Replace any protective plates and remove the Cheshire collimator. When this step is completed and all of the alignment patterns shown in this guide are true then the

[Contact Us](#)



## Collimate Light from an LED , Thorlabs Insights

Collimating light from an LED or other large, incoherent source can be a surprisingly challenging task.

[Contact Us](#)

## Collimator

These collimators cause magnification of the object and an increase in sensitivity proportional to the level of magnification. Thus, given a parallel-hole collimator and a focused collimator with the same

[Contact Us](#)



## Collimator , Optics, Light Measurement, Imaging

Collimator, device for changing the diverging light or other radiation from a point source into a parallel beam. This collimation of the light is required to make

[Contact Us](#)



## Understanding Collimation to Determine Optical Lens Focal Length

Monica Rainey, Optical Engineer, explains how to collimate a divergent light source, and how to use collimated light to determine the focal length of a simple optical lens.

[Contact Us](#)



### Collimator

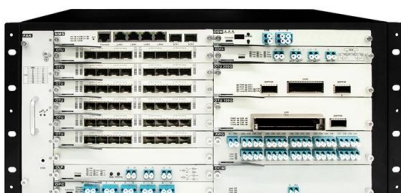
An example of an optical collimator with a bulb, an aperture (A), and a plano-convex lens (L) In optics, a collimator may consist of a curved mirror or lens with some

[Contact Us](#)

### Collimating with a collimator

Balancing system Camera centring errors  
Collimator construction Dome Azimuth  
Calculation Filter focus-offsets RC Collimation  
Removing lens

[Contact Us](#)



### Collimator

Collimator is a device used for changing the direction of a light diverging from a point source into a parallel beam. The collimation of light is necessary to make

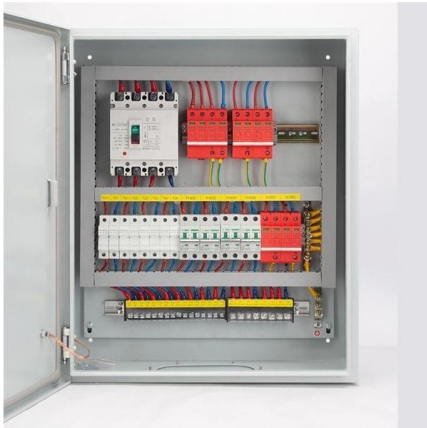
[Contact Us](#)



## Practical Collimation of single-mode or polarization-maintaining fibers

The following describes some tricks and tips for the collimation adjustment of single-mode, PM or multimode fibers. Please note that single-mode and PM collimation is significantly different than

[Contact Us](#)



### Considerations in Collimation

To achieve ideal collimation, the size of the illumination source must be minimized or the focal length of the collimating system must be increased. Note that as you

[Contact Us](#)

## Contact Us

---

For datasheets, pricing, or custom fiber access solutions, please visit:  
<https://www.frindel.es>