

How to connect cable trays to junction boxes





How to connect cable trays to junction boxes



Cable Junction Boxes: 8 Types, Tech Specs & Installation

Explore 8 types of cable junction boxes, their tech specs, installation tips, and maintenance. Get expert insights on selection, common faults, and

[Contact Us](#)

RECOMMENDED SPECIFICATIONS OF JUNCTION BOX AND CABLE TRAY

Foreword These Guidance Notes provide ABS recommendations for the design and construction of cable trays and junction boxes. These Guidance Notes are applicable to fixed and floating offshore

[Contact Us](#)



Cable Tray Technical Guide A practical guide to product selection and

Cable Tray Technical Guide A practical guide to product selection and installation This guide for engineers and installers has been developed by ABB as a practical reference regarding cable tray

[Contact Us](#)

A Guide to Installing and Supporting Electrical Cable Trays

A professional guide to installing electrical cable tray systems per NEC Article 392. Covers support, securing cables, and fill calculations.

[Contact Us](#)



Instrument Tray Layout

Cable Tray wiring systems are more common than conduit wiring systems because they are safer, more reliable, take up less space, and are

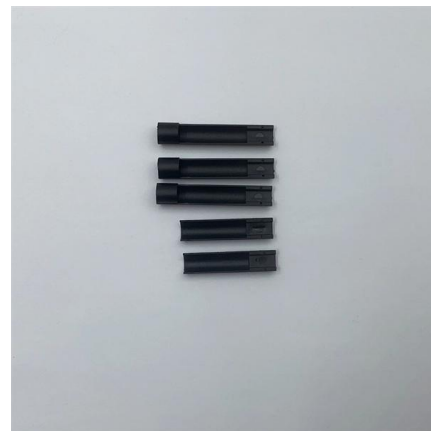
[Contact Us](#)



Boxes mounted to cable tray

In an accessible suspended ceiling of a corridor in a college dorm we are installing cable tray. We are running the feeder cables for the sleeping units on each floor. Can I mount a junction

[Contact Us](#)



Junction Box Installation: A Step-by-Step Guide for Safe

Junction boxes are essential components in electrical systems, serving as safe enclosures for electrical connections.

[Contact Us](#)





Cable Tray / Trough Tray INSTALLATION

) To install: place 1 part of cover clamp around trough tray cover and tray assembly. Place 2nd part around opposite end of Trough Tray, align clamp holes and install hardware.

[Contact Us](#)



Cable Tray Trunking & Ladder Installation Method for

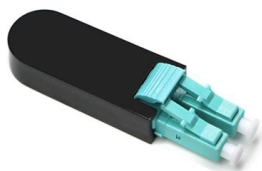
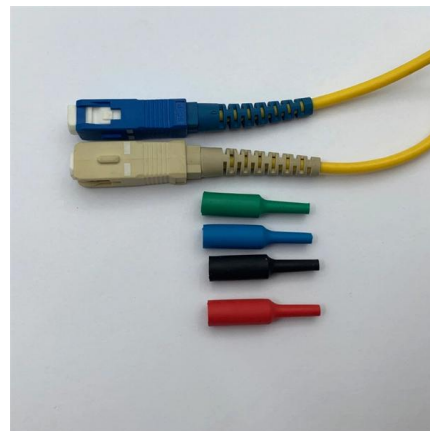
The purpose of this article is to define the sequence and methodology for the installation of electrical cable trays, cable trunking, cable raceways and boxes,

[Contact Us](#)

A Guide to Installing and Supporting Electrical Cable Trays

This guide covers the critical steps, from selecting the right electrical cable tray and performing accurate cable fill calculations to managing a safe cable pull through

[Contact Us](#)



How to Install an Electrical Junction Box

If your house has visible wiring splices or if you need to add a new splice to extend a circuit, follow these simple steps to install a junction box.

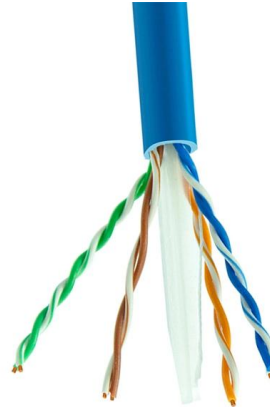
[Contact Us](#)



Cable Tray Technical Guide A practical guide to product selection and

Cable tray is considered to be a system. It must provide continuous support for cables, and the electrical continuity of the cable tray system must be maintained.

[Contact Us](#)



Junction box to cable tray transition , Information by Electrical

I was planning on putting in chase nipples where it changes to cable tray so the wires can go through the chase nipples and into the tray. I also thought about cutting the side of the J box

[Contact Us](#)

How to Wire a Junction Box for Socket and Light Circuits

Any cables running to and from a junction box should be clamped using cable clips or clamps! Please also check the rules very carefully for ring mains and radial circuits.

[Contact Us](#)



How to Install a Junction Box Safely and Correctly 2026

Learn how to install a junction box safely, from choosing the right box and mounting it correctly to making secure splices and following basic code-safe

[Contact Us](#)

This document deals with cables trays, cables and connector installation and segregation, cable trays earthing and E.M.C. directives. These rules shall be applied in the cabling engineering workflow for

[Contact Us](#)



How to Make an Electrical Junction Box: Step-by-Step

An electrical junction box is used to safely connect wires and keep them organized. It helps prevent short circuits and keeps your wiring up to code.

[Contact Us](#)

DIY Installation: Mastering Light Duty Cable Tray Setup

Explore our comprehensive DIY guide to master the installation of light-duty cable trays. From planning to cable organization, follow step-by-step instructions for a tidy and efficient cable

[Contact Us](#)



Mastering Cable Tray Installation , Step-by-Step Guide for a Seamless

Mastering cable tray installation is crucial for creating a safe, organised, and efficient cable management system. By following this step-by-step guide, you can ensure a seamless setup that

[Contact Us](#)



DIY Wiring: How to Safely Install and Use Junction Boxes

A waterproof junction box is designed to resist moisture, ensuring the electrical system's integrity even in damp conditions. It's essential to comprehend

[Contact Us](#)



Fiber Terminal Box vs Junction Box: Key Differences

The fiber optic terminal box includes the outer shell, internal components (support frame, fixed fiber tray, clamp), and fiber optic connector

[Contact Us](#)



Cable Tray Installation

Learn everything about cable tray installation with our complete guide. Discover types, steps, and safety tips for efficient electrical cable management.

[Contact Us](#)



How to Install a Junction Box

A junction box provides a code-approved place to house wire connections, whether for outlets, switches, or splices. Here's how to install one.

[Contact Us](#)

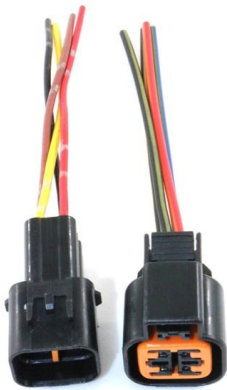




Connecting Cable Trays: Your Guide to Secure and

Learn common methods for connecting cable trays safely and efficiently. Our guide covers splice plates, quick-connects, and key tips for secure

[Contact Us](#)



CABLE TRAYS CONNECTION INSTRUCTIONS

Introduction The purpose of this document is to describe the correct process to install the connectors in our cable trays.

[Contact Us](#)

CABLE TRAY SYSTEMS GUIDE

Some applications may require the cable tray to support the weight of a single, dead object in addition to the cable loads. Specifications typically require this to be applied at the midpoint of the span between

[Contact Us](#)



Contact Us

For datasheets, pricing, or custom fiber access solutions, please visit:
<https://www.frindel.es>