

How to connect an optocoupler to 220V voltage





How to connect an optocoupler to 220V voltage



Detecting 220vac with optocoupler and microcontroller

Unfortunately, when connected to the actual heating system, I find that the wires I wish to monitor (which run around my house before reaching the

[Contact Us](#)

How to Use Relay with optocoupler: Examples, Pinouts,

A relay with an optocoupler combines the functions of a relay and an optical isolator, allowing for the control of high voltage or high current circuits while providing



[Contact Us](#)



opto isolator

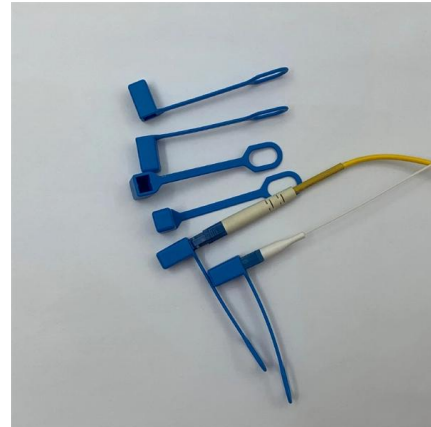
What is the intended function of the circuit? Just check for presence / absence of 220 V supply? If it was for filtering, the capacitor would have been connected in parallel with the load.

[Contact Us](#)

Isolated inputs and outputs with Arduino and optocoupler

We use an optocoupler to galvanically isolate the inputs or outputs of Arduino and be able to connect them safely to higher power circuits

[Contact Us](#)



3 Channel 220V AC Optocoupler Module Optocoupler

220V 3-way optocoupler isolation module
Product Description: 1. Function: Test whether AC 220V exists; when there is 220V, the optocoupler can be grounded;

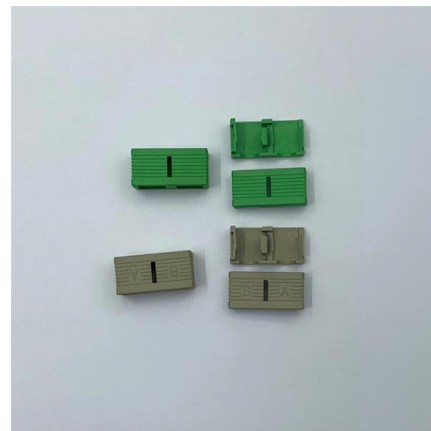
[Contact Us](#)



microcontroller

Obtain a 220 Volt incandescent miniature night light bulb, of power rating 2 to 8 watts, such as the ones on this page. Use an optocoupler like the PC817, that can withstand 50 mA current on the input LED,

[Contact Us](#)



Optocoupler insulation board, 5 pieces, 1 channel optocoupler

MAIN OBJECTIVE: 1-channel optocoupler isolation module, mainly used to detect the existence of 220V AC, which is efficient and convenient.
LEVEL OUTPUT: TTL output level can be detected by single

[Contact Us](#)





Using an Optocoupler

Choose the resistor based on your microcontroller voltage and the current draw of the optocoupler chip that you use. One thing to remember is that the output is polarized, so you have to make sure to

[Contact Us](#)



What Is Optocoupler , Opto-coupler Working And

what is opto coupler Opto-coupler is an electronic component that is used to conduct the electrical signals from one circuit to another circuit without directly being

[Contact Us](#)

Optocoupler Circuits, Working, Characteristics, Interfacing

Optocoupler Internal Construction
Optocoupler Characteristics
Optocoupler Basic Configuration
Types of Optocouplers
Application Circuits
Optocoupler Digital Interfacing
Interfacing Analogue Signals with Optocoupler
Different Families of Optocouplers
Optocouplers with Transistor Output
Optocouplers with Darlington Output
An optocoupler can be also effectively used for interfacing analog signals across two circuit stages by determining a threshold current through the IRED and subsequently modulating it with the applied analog signal. The following figure shows how this technique may be applied for coupling an analogue audio signal. The op amp IC2 is configured like See more on homemade-circuits Learning about Electronics



How to Build an Optocoupler Circuit - Learning about

In this project, we will go over how to build an optocoupler circuit so that we can create



electrical isolation of the input and output of a circuit.

[Contact Us](#)



How to detect 220 VAC voltage using an opto-isolator

Note that when the 230 VAC is on, the transistor in the optocoupler is pulsing on the half of 230 VAC sinus, so use a buffer like C3 to smooth the signal on the 5V side.

[Contact Us](#)

AC/DC optocoupler wiring

Looking for some clarification on the proper wiring of an AC/DC optocoupler (HCPL3700, datasheet) when working with 120vac. From what i read

[Contact Us](#)



Optocoupler Tutorial and Optocoupler Application

What is an Optocoupler? An optocoupler (also called an opto-isolator, photo-coupler, or optical isolator) is a solid-state semiconductor device that

[Contact Us](#)

3Pcs 1Channel AC Optocoupler Module 220V Voltage Detect

Find many great new & used options and get the best deals for 3Pcs 1Channel AC Optocoupler Module 220V Voltage Detect Optocoupler Isolation at the best online prices at eBay! Free shipping for



Mesh door/glass door optional



Sp-601 glass door

Sp-602 mesh door

PC817 Optocoupler pinout, working and Example with

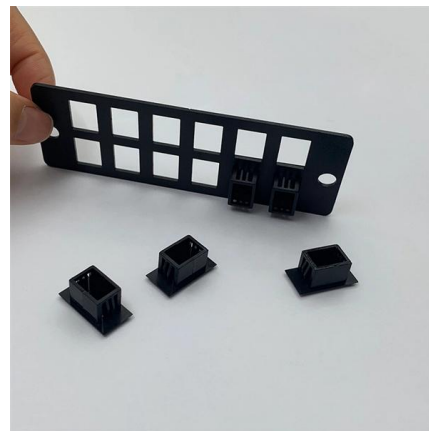
It can be directly connected to any low voltage dc device or microcontroller. The input voltages will have the same effect from every side on the optocoupler, it will just

[Contact Us](#)

How to Use an Optocoupler to Pass Signals Between

How to Use an Optocoupler to Pass Signals Between Controllers at Different Voltages: This tutorial makes use of the 4N25 optocoupler chip to allow for

[Contact Us](#)



Convert 220V AC opto-isolator test board to 24V DC

Feature: Functoun: Test whether AC 220V is existed Ouput TTL Level: can use MCU to test,voltage is 3-5V Output can connect PLC 24V Wiring: When connecting the PLC input, the PLC's

[Contact Us](#)



BT136 How to connect Optocoupler with



TRIAC to control high

In this video, I've explained how to control a high voltage AC device with low voltage DC circuit.

[Contact Us](#)



Using optocoupler for 220V signal

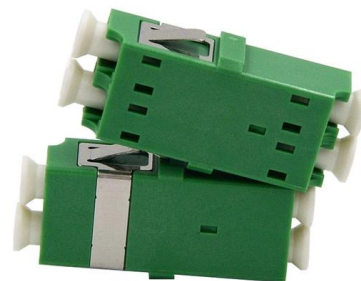
The troubling part is the 220V AC signal. What I want to do, is halfwave rectify the 220V AC signal and use a capacitor to 'smooth' out the signal

[Contact Us](#)

Do I really need an optocoupler when controlling 220v with

Do I really need an optocoupler when controlling 220v with arduino using a relay? I want to make a really simple circuit to start appliances one by one after a power outage. I want to make some relay

[Contact Us](#)



How to use a optocoupler in circuit?

V. the use of optocoupler precautions The optocoupler uses the optical signal as the medium to realize the coupling and transmission of the electrical

[Contact Us](#)



Optocoupler: Its Types and Various Application in DC/AC Circuits

Applications of Optocoupler As discussed before few Optocoupler used in DC circuit and few Optocoupler used in AC related operations. As the Optocoupler does not allow direct electrical connection between two sides, the main application of the Optocoupler is to isolate two circuits.

[Contact Us](#)



What Is Optocoupler and Its Application with Examples

An optocoupler is a semiconductor device that transmits an electrical signal between two isolated circuits using light. This process ensures there is no

[Contact Us](#)

Using Opto Couplers

What is necessary is to ensure that R1 creates an appropriate current level from the input circuit to correctly drive the LED side of the optocoupler, and that R2

[Contact Us](#)



Optocoupler Tutorial for Beginners

Optocoupler Example: Isolating A Motor Circuit From Your Arduino Sometimes you need to control a high current from a microcontroller circuit, such

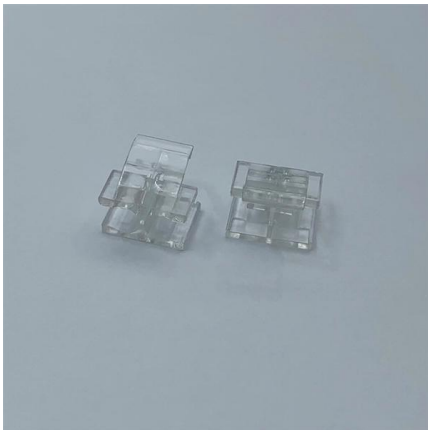
[Contact Us](#)



AC/DC optocoupler wiring

The Fairchild datasheet for your part shows some more details of what's going on inside: You can see that the 47 kOhm resistors on the AC pins

[Contact Us](#)



Optocoupler Tutorial and Optocoupler Application

We know from our tutorials on Transformer Basics, that transformers not only provide a step-down (or step-up) voltage conversion, but they can also

[Contact Us](#)

Contact Us

For datasheets, pricing, or custom fiber access solutions, please visit:
<https://www.frindel.es>