

# **How much slope does a 30-gauge cable tray need**





## How much slope does a 30-gauge cable tray need

---



### Cable Tray Dimensions Guide: Standard Sizes, Tray

Explore standard sizes by tray type, understand width and depth limits, and see how to calculate and choose compliant cable tray sizes for real projects.

[Contact Us](#)

### How to Install Cable Tray: A Comprehensive Guide to Different Cable

Welcome to our step-by-step guide on installing cable trays! In this video, we'll explore the different types of cable trays available and provide detailed instructions for their installation.

[Contact Us](#)



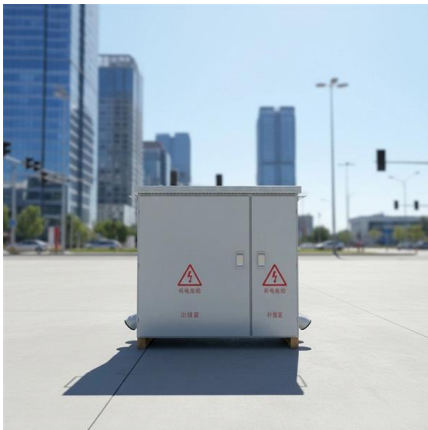
### Cable Tray Installation Specifications , PDF , Sheet

This document provides installation guidelines for cable trays, including: 1) Cable trays come in perforated and ladder types, with perforated trays made of steel

[Contact Us](#)

### Cable Tray Offset Calculator , Vertical, Horizontal & Compound Offset

Use this cable tray offset calculator to estimate sloped section length, required horizontal run, and installation feasibility for vertical, horizontal, and compound tray offsets.



### Cable Tray Fill Calculator , NEC 40% Rule , CalcShed

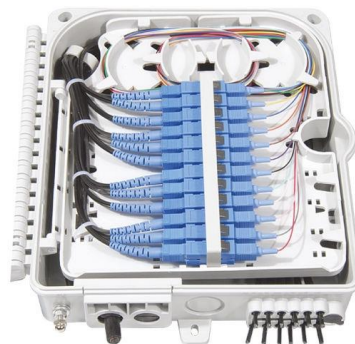
How Cable Tray Fill Is Estimated Cable tray fill is a way to estimate how much space cables take up inside a tray, often expressed as a percentage. Higher fill can make pulling, cooling, and future

[Contact Us](#)

### Cable Tray Fill Calculator

Solid bottom trays: 30-40% for power cables, up to 50% for control/instrumentation The fill capacity of a cable tray refers to the maximum amount of space that can be occupied by cables while maintaining

[Contact Us](#)



### MORE CASES PRESENTATIONS



### Cable Ladder Cable Tray Weight Calculation Guide

Learn how to perform a Cable Tray Weight Calculation for accurate estimations. Discover the formulas and step-by-step methods for calculating the

[Contact Us](#)



## How To Calculate Weight Of Cable Tray » Wiring Work

Calculating the weight of a cable tray is not always easy, but by following some simple steps, it can be done accurately. Understanding how to

[Contact Us](#)



## Cable Tray Technical Guide A practical guide to product selection and

A practical guide to product selection and installation This guide for engineers and installers has been developed by ABB as a practical reference regarding cable tray characteristics, installation, and

[Contact Us](#)

## Cable Tray Capacity Calculator

A Cable Tray Capacity Calculator is a tool for electrical engineers involved in the installation and management of electrical cables.

[Contact Us](#)



## Cable Tray Sizing

Learn cable tray sizing with accurate width and dimension calculations. Avoid common mistakes for efficient cable management. Read our expert guide now!

[Contact Us](#)



## Cable Tray Sizing Calculator , IEC 61537 & NEC 392 Guide

Use this cable tray sizing calculator to check fill %, select tray size, and comply with IEC 61537 & NEC 392 with formulas, example and checklist.

[Contact Us](#)



## Precautions for Cable Tray Installation

Cable Tray Installation Guide The correct installation of cable trays is crucial for establishing a reliable and efficient cable system. It ensures that cables are

[Contact Us](#)

## A Guide to Installing and Supporting Electrical Cable Trays

This guide covers the critical steps, from selecting the right electrical cable tray and performing accurate cable fill calculations to managing a safe cable pull through

[Contact Us](#)



## A Guide to Installing and Supporting Electrical Cable Trays

A professional guide to installing electrical cable tray systems per NEC Article 392. Covers support, securing cables, and fill calculations.

[Contact Us](#)



## B-Line series Cable Tray Design



### Considerations

As an industry leader in cable tray, Eaton offers one of the widest ranges of cable management solutions available in the market today with its B-Line series portfolio. With unmatched quality and service, we

[Contact Us](#)



### Cable Tray Spacing Standards for Installation and Safety

Key Factors Impacting Cable Tray Spacing  
Understanding cable tray spacing is key to meeting safety regulations and maintaining system

[Contact Us](#)



### Tray and Ladder Sizing by Cable Capacity Calculator - IEC

Calculate tray and ladder sizes by cable capacity with our IEC-compliant calculator for efficient and accurate electrical installations.

[Contact Us](#)



### Best Practice Guide to Cable Ladder and Cable Tray Systems

This guide covers cable ladder systems, cable tray systems, channel support systems and associated supports intended for the support and accommodation of cables and possibly other electrical

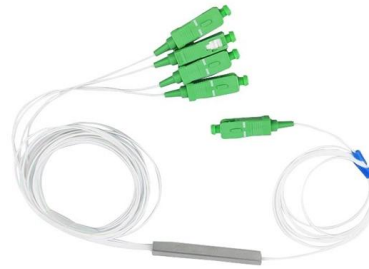
[Contact Us](#)



## Cable Tray Load Calculation and Sizing: Your Easy Guide

These charts show how much weight their trays can hold safely over different support distances (spans) and how much they will bend. You compare

[Contact Us](#)



## B-Line series Cable Tray Design Considerations

Most outdoor cable tray systems are ladder type tray, and the most severe wind loading will be the impact pressure to the cable tray side rails. The generic impact pressures corresponding to various

[Contact Us](#)

## GUIDE CABLE TRAYS TECHNICAL

NEMA VE 1-2017 Specifies requirements for metal cable trays and associated fittings designed for use in accordance with the rules of Canadian Electrical Code, Part I and the National Electrical Code®

[Contact Us](#)



## Cable Tray Technical Guide A practical guide to product selection and

As per the NEC, the maximum allowable rung spacing is 9 inches (230 mm) when cable tray carries single-conductor cables of 1/0 to 4/0 AWG (American Wire Gauge) (Appendix I).

[Contact Us](#)



## Cable Tray Slope & Fabrication Calculator , Utility Hub

The Cable Tray Slope & Fabrication Calculator is a field-ready tool for electrical construction workers who need to quickly calculate V-cut dimensions, bolt hole positions, slope length, and hanger

[Contact Us](#)



## Cable Tray Sizing & Load Calculations Made Simple

Pick a span (often 1.5-3 m) and verify the uniform load rating exceeds your cable weight plus a safety factor. Check deflection limits to protect terminations and fibre.

[Contact Us](#)

## TECHNICAL AND SIZING DATA

The cable ampacity installed in solid tray will be similar to cable installed without spacing in accordance with CEC Rule 12-1210 (3). Solid tray will carry the same type of conductors as ventilated trays.

[Contact Us](#)



## Contact Us

For datasheets, pricing, or custom fiber access solutions, please visit:  
<https://www.frindel.es>