

How loud should the noise from the distribution box be





Overview

Eighty-five decibels is the maximum sound level that OSHA and the CDC have stated should be maintained in a workplace to ensure personnel safety.

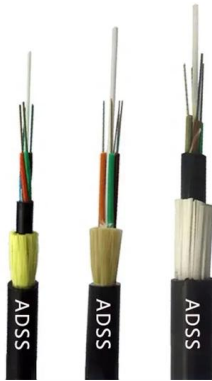
Employee Health and Safety: Prolonged exposure to high noise levels can lead to hearing loss, stress, fatigue, and reduced concentration – all of which negatively affect employee productivity and well-being.

Communication Difficulties: Noise can disrupt communication between workers, leading to.

These types of doors not only offer noise reduction, but also provide a more efficient and cost-effective solution for distribution centres by ensuring that energy is not wasted on unnecessary heating or cooling of. The sound travels from the source via a path, which can be through the air (airborne) or through the structure (structureborne), or a combination of both paths, until it reaches the receiver of the airflow through and around them. Where it is reasonably practicable to do so, employers must reduce noise exposure.



How loud should the noise from the distribution box be



Distribution Box Wiring Steps

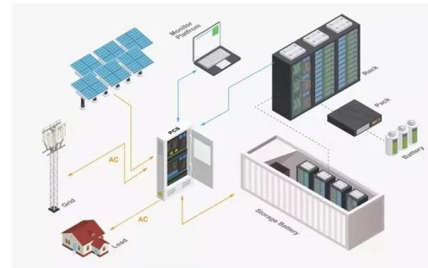
?Wiring and Binding? ?Wiring Direction?: Wiring between the main circuit breaker and each branch circuit breaker in the box generally goes on the left, and

[Contact Us](#)

Noise in engineering

These pages aim to provide simple, easy to follow guidance and advice on the risks of exposure to noise, specific to engineering industries, and gives possible solutions to some common noise

[Contact Us](#)



DETAILS DISPLAY

Focus On Every Detail



01
Neat & Clean
Layout

Cleaner arrangement
of components,
Easy to operate

Noise Reduction in Distribution Centers

Eighty-five decibels is the maximum sound level that OSHA and the CDC have stated should be maintained in a workplace to ensure personnel safety. A good

[Contact Us](#)

Analysis of the Noise Propagation Characteristics of Underground

The propagation of audible noise through space may have a direct impact on the nearby public. For distribution rooms located underground in buildings, audible noise not only propagates

[Contact Us](#)



Electrical Distribution Box making a humming noise and

Here's an old engine noise trick. Take a large screwdriver, hold the point on the metal enclosure. Hold the Plastic handle against your ear. Move to different spots until you find the loudest

[Contact Us](#)



Electrical System Noise Warnings & Diagnosis

Building noise traced to electrical system components, fixtures, devices, transformers, relays, or wiring. How to track down and fix building sounds originating in electrical system components or devices.

[Contact Us](#)



Distribution Center Noise

A guide to understanding the problem of noise inside and around distribution centers and how to effectively measure that noise.

[Contact Us](#)





LG LMU480HV + Distribution Box = Loud Noise

When both indoor units come on for full cooling, a loud whistling noise (seems to) come from large-filter-dryer-looking piece of pipe assembly and whistles through lineset to distribution box.

[Contact Us](#)



How to confirm whether the installation location of the

Ensure that the installation location of the electrical distribution box will not interfere with other equipment or production processes. The box should not

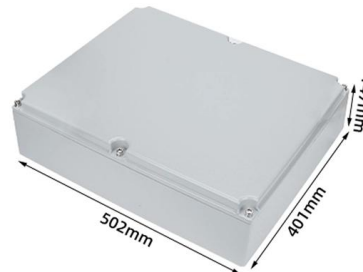
[Contact Us](#)



How to Install a Cable Distribution Box Safely and

Site Inspection and Planning Conduct a detailed survey of the installation site to determine the installation location of the cable distribution box.

[Contact Us](#)



Analysis of the Noise Propagation Characteristics of Underground

For distribution rooms located underground in buildings, audible noise not only propagates through the air but also through solid structures such as concrete in the building, affecting people

[Contact Us](#)



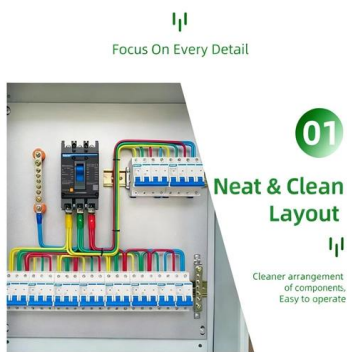
Detailed introduction of safety requirements for distribution box

Safety control requirements for distribution box:
1. The low-voltage power supply system at the construction site shall be equipped with a general distribution box, a distribution box and a

[Contact Us](#)



DETAILS DISPLAY



What Is an Electrical Distribution Box? A Complete Guide

An electrical distribution box is a centralized unit responsible for distributing electrical power across multiple circuits within various environments, including residential,

[Contact Us](#)

Main Distribution Panel with a Loud Hum

I am stumped at this point and am relying on the wealth of experience in this forum to shed some light on my dilemma. We just completed a small grocery store and they opened this week.

[Contact Us](#)



The Complete Guide to Distribution Box: Installation, Types & More

Blog The Complete Guide to Distribution Box: Installation, Types & More By Admin Aug 2, 2025 No Comments # distribution box Introduction Electrical systems power our homes, offices, and

[Contact Us](#)



How Loud is too loud part two

Common Noises and Their Levels Understanding the levels of sound emitted from the equipment you use allows you to be aware of when you should be protecting your hearing. You need to protect your

[Contact Us](#)



Understanding Distribution Boxes: Your Guide to Power

Weatherproof Distribution Boxes These serve specific outdoor purposes, with rain, dust, and extreme temperatures sealed shut, protecting any

[Contact Us](#)

Key Points Of Installation And Collocation Of Distribution Box In

If they are combined in the same distribution box, power and lighting lines should be set separately. 7. The wire inlets and outlets in the distribution box and switch box shall be set at the lower bottom of

[Contact Us](#)



Ways to Reduce Warehouse Noise , Cisco-Eagle

Experts agree: a range of 50-60 decibels impacts productivity and personal safety the least. Read for ways to reduce noise in your warehouse or plant.

[Contact Us](#)



CMU School of Computer Science

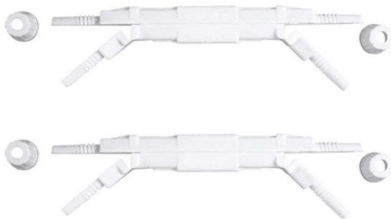
çç-- bowls èì~ bowls ç¥"æ^ì box ç>'å box ç>'å
boxes ç®± boxes æ½æoe¯ boxing ç"·å© boy å-
©å boy ç"·å [Contact Us](#)



Finding & Fixing a Low Electrical Humming Noise

A low electrical humming noise can be more than just a nuisance. Learn how to find and fix a humming electrical outlet, breaker box, or appliance!

[Contact Us](#)



Distribution Center Noise

Distribution centers are critical hubs in the supply chain, enabling the rapid movement of goods to their final destinations. However, their high levels of activity occurring around the clock - ranging from

[Contact Us](#)



How loud should a branch box be? : r/hvacadvice

Just had a 3-zone Mitsubishi hyper heat installed with a branch box inside the basement. When it's running it's sounds like the pipes do when someone is showering upstairs. Also, periodically (I think

[Contact Us](#)





CHAPTER 48. NOISE AND VIBRATION CONTROL

How sound level measurements are to be adjusted for the presence of other sound sources (specify that background sound level measurements be performed without other sound sources under

[Contact Us](#)



How to reduce noise in your distribution centre

Is your distribution centre too noisy? Excessive noise can be uncomfortable and even harmful for workers, causing long-term hearing damage.

[Contact Us](#)



What's Behind a Buzzing Electrical Panel? , My Electric Works

If your electrical humming becomes a loud and persistent buzz, you have a problem. Normal circuit breakers should operate almost silently. There will be a loud buzz when a circuit

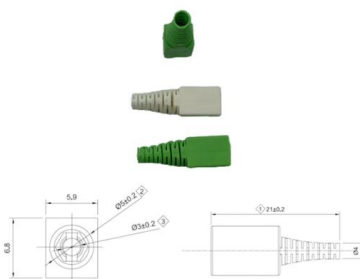
[Contact Us](#)



Safety requirements of distribution box

The distribution box has the characteristics of small size, simple installation, special technical performance, fixed location, unique configuration function, not limited by

[Contact Us](#)





How to Reduce Noise in Material Handling and

Distribution and material handling facilities can be loud. Learn how to address many of the most common factors that increase noise at these locations.

[Contact Us](#)



Contact Us

For datasheets, pricing, or custom fiber access solutions, please visit:
<https://www.frindel.es>