

How is a 12-beam splitter made



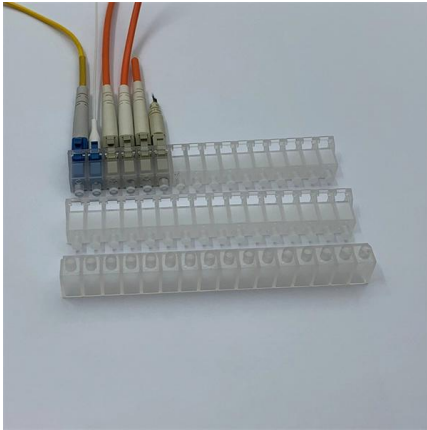


Overview

These beamsplitters are made by coating the hypotenuse of dual prisms with a partially reflecting material and joining them together using optical or epoxy cement. Beamsplitters are optical components used to split incident light at a designated ratio into two separate beams. a laser beam) into two (or sometimes more) beams, which may or may not have the same optical power (radiant flux).



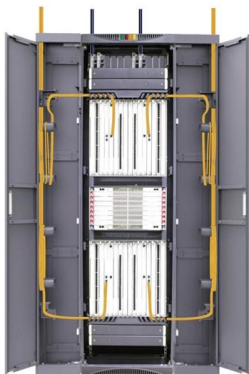
How is a 12-beam splitter made



Beam splitter , Description, Example & Application

A beam splitter is an optical device that splits a single beam of light into two or more beams. It is commonly used in scientific and industrial applications.

[Contact Us](#)



How Does a Beam Splitter Work?

Optical coatings, often made of dielectric materials or thin layers of metal, are designed to achieve a desired balance, allowing a specific percentage of light to be reflected and the rest to be transmitted.

What is a Beam Splitter?

A beam splitter or power splitter is an optical device that can split an incident light beam e.g. a laser beam into two or sometimes more beams, which may or may not have the same optical

[Contact Us](#)



How does a beam splitter work? Common types and use cases

At the core of a beam splitter's functionality is its ability to split an incoming light beam into multiple paths. This is typically achieved through processes of refraction, reflection, or diffraction.

[Contact Us](#)



Beam Splitter 101

If your beam splitter is polarized, it will be taking unpolarized lighting and splitting it into two orthogonally polarized beams. This basically means that it's splitting it

[Contact Us](#)

What Are Optical Beam Splitters?

What Are Optical Beam Splitters? Key Takeaways Beam splitters, essential for applications such as teleprompters and holograms, have different types that play

[Contact Us](#)



What are Beamsplitters?

Cube beamsplitters are constructed using two typically right angle prisms (Figure 1). The hypotenuse surface of one prism is coated, and the two prisms are cemented

[Contact Us](#)



How are polarizing beam splitters made?

UltraOpto Polarizing Beam Splitter (PBS) is manufactured through core processes such as substrate selection, precision grinding and polishing, vacuum coating, and optical gluing.

[Contact Us](#)



How Do Optical Beam Splitters Work & Applications

In laser applications, multiple laser beam paths emerge from single beam distribution through use of diffractive beam splitters. The functionality is

[Contact Us](#)

Beam Splitter

A beam splitter is defined as an optical device that effects a linear transformation of fields presented at two input ports, producing output beams that are related to the input fields in a characteristic manner

[Contact Us](#)



What is a Beam Splitter?

While most beam splitters have only two output ports, there are also beam splitters with multiple outputs. They are fabricated using multiple cascaded beam splitters.

[Contact Us](#)



Beam Splitters - optical power splitter, beamsplitter, thin-film

Beam splitters are devices for splitting a laser beam into two or more beams. There are different types, including polarizing and non-polarizing versions.

[Contact Us](#)



The Buyer's Guide to Beam Splitters , Blue Ridge Optics

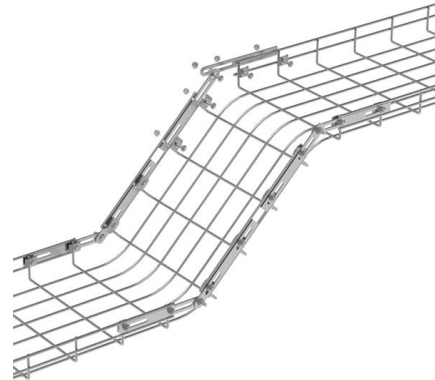
Matching the beam splitter's specifications to the characteristics of the light source ensures optimal performance. This minimizes light losses and aberrations while maintaining the

[Contact Us](#)

Understanding Beamsplitters: Types, Principles, and

These beamsplitters are made by coating the hypotenuse of dual prisms with a partially reflecting material and joining them together using optical

[Contact Us](#)



Beam splitters -- Firebird Optics

Beam splitters are constructed from high quality glass, calcite and other birefringent materials with tight tolerances on both surface flatness and quality, enabling them

[Contact Us](#)



What is a Beam Splitter, and What are Its Functions and

A beam splitter is an optical device designed to split an incident light beam into two or more separate beams. It operates based on the principles of

[Contact Us](#)



15×12×2mm, 520nm, Polarizing, Beamsplitter Plate (PBSP)

Shop stocked optical filters, beamsplitters, waveplates, and custom optical thin-film products. SyronOptics supports engineers with stock validation, custom sizes, mounting options, and global

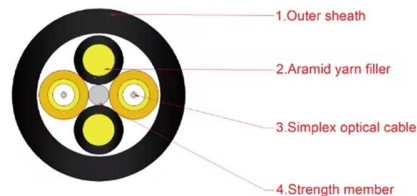
[Contact Us](#)



All You Need to Know About Beam Splitters

Most beam splitters are fabricated from glass cubes. When a light beam comes into contact with these cubes, half of it enters the glass, while the

[Contact Us](#)



Optics , Beam Splitter , MKS/Newport , 10Q20UF.HB1 25.4 mm Dia.

10Q20UF.HB1 25.4 mm Dia. UVFS Ultrafast Ti:Sapphire Laser Harmonic Beamsplitter; Refl. 400nm; Trans. 800nm This is a 10Q20UF.HB1 UVFS Ultrafast Ti:Sapphire Laser Harmonic Beamsplitter, a

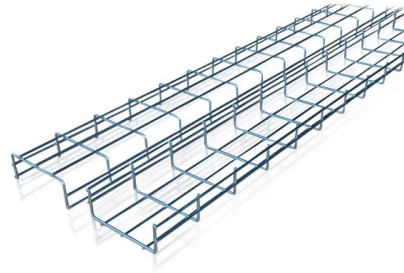
[Contact Us](#)



What Are Optical Beamsplitters? , Plate, Cube & Dichroic Types

In Summary Optical beam splitters are versatile devices, typically made of glass, used in separating or combining light beams. These optical components play a major role in the science and tech industry.

[Contact Us](#)



Exploring Beam Splitters: Types and Applications

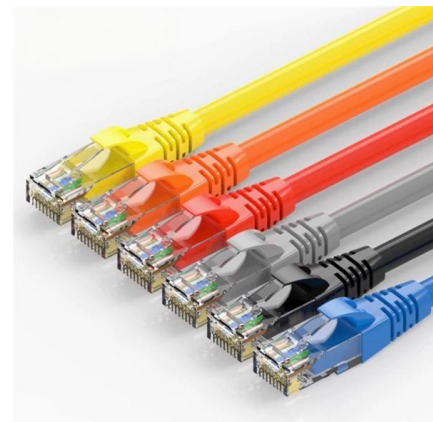
What Is a Beam Splitter? Working Principles, Types, and Applications Beam splitters play a critical role in modern optical technology, powering devices from teleprompters and holographic displays to fiber

[Contact Us](#)

Beam Splitters: Explained

Beam splitters are a fundamental element in optical systems. Beam splitters are, in essence, optical components used to divide a single light source

[Contact Us](#)



What is a beam splitter and how do you make one?

Introduction to beam splitters. You can make one - as seen on MacGyver.

[Contact Us](#)

Beam Splitters: Types and Applications



Beam splitters find their application in a diverse array of fields, from teleprompters to robotics, impacting various technologies we rely on daily. These unassuming

[Contact Us](#)



Photonics 101

As the name suggests, a beam splitter refers to an optical device which is used to split or divide a beam of light into two. A beam splitter is usually the cornerstone of most interferometers.

[Contact Us](#)

Understanding Beamsplitters: Types, Principles, and

A cube beam splitter has a considerable advantage over a plate beam splitter because the former does not generate ghost images. Furthermore, users

[Contact Us](#)



Beam Splitters & Their Applications: Your Ultimate Guide

A beam splitter is an instrument that splits a light beam into two or more beams. In this blog post, we will discuss about beam splitters and their

[Contact Us](#)



Beam Splitters: Types, Applications, and Selection

Metasurface-based beam splitters are highly efficient, compact, and can operate over a wide range of wavelengths. They have the potential to replace

[Contact Us](#)



Contact Us

For datasheets, pricing, or custom fiber access solutions, please visit:
<https://www.frindel.es>