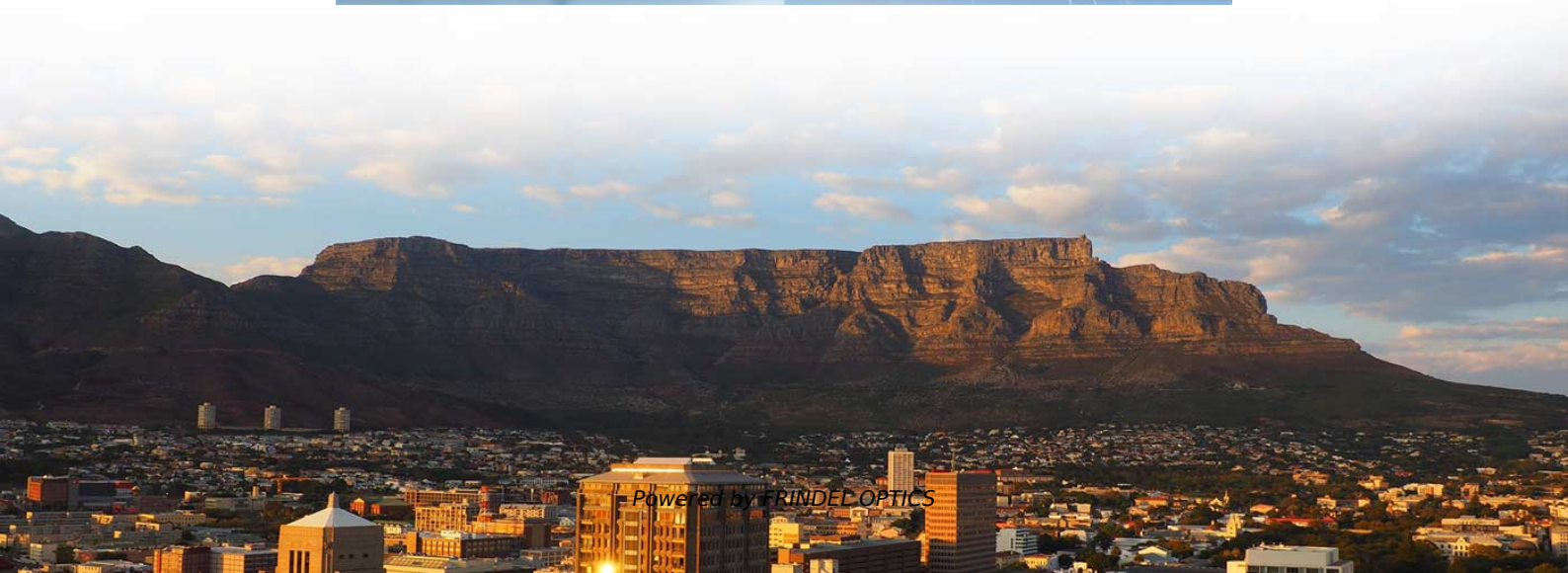




**FRINDEL OPTICS**

# **High-voltage motor relay protection commissioning**





## High-voltage motor relay protection commissioning

---



### HT Electrical System Commissioning Guide

The document provides procedures for commissioning the high voltage (HT) electrical system of a project. It describes the objectives of commissioning as

[Contact Us](#)

### Protection for a high voltage motor

High voltage motor protection requires a correctly programmed multifunctional digital relay. Programmed settings include earth faults and thermal protection of the

[Contact Us](#)



### BioPreferred

I buy for the federal government Federal law, the Federal Acquisition Regulation, and Presidential Executive Orders direct federal agencies and their contractors to

[Contact Us](#)

### SEL-849 Motor Management Relay , Schweitzer Engineering

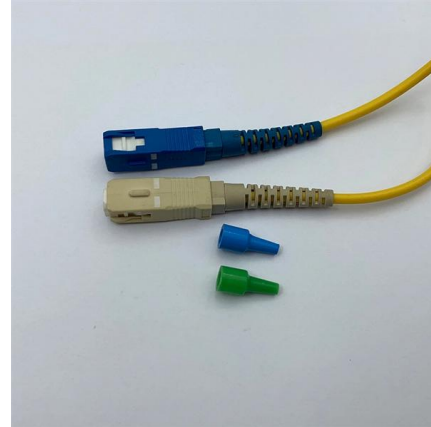
PDF file

### Protection Relay Testing for Commissioning - 2916868



The purpose of this Standard Work Practice (SWP) is to standardise and describe the method for testing of Ergon Energy protection relays for commissioning purposes.

[Contact Us](#)



### Medium Voltage Switchgear Commissioning Checklist: Tests Before

Medium Voltage Switchgear Commissioning Checklist: Tests Before Energization Quick Answer: Commissioning proves that MV switchgear is electrically sound, mechanically safe, and

[Contact Us](#)

### Protective Relay Market Report: Size, Growth, Trends

Protective Relay Market size was valued at USD 3.1 Billion in 2024 and is expected to reach USD 4.8 Billion by 2032, growing at a CAGR of 6.1% The report provides

[Contact Us](#)



### Protective Relay Market Size, Share, Trends , Growth, 2034

Protective Relay Market Size, Share & Industry Analysis, By Technology (Numerical/IED, Static and Electromechanical), By Voltage (Low Voltage, Medium Voltage, High/Extra-High Voltage),

[Contact Us](#)

### iMMR Motor Protection Relay Testing



## Results

? iMMR Motor Protection Relay Testing ? Reliance Industries Ltd -- Jamnagar, Gujarat Performed detailed testing of the Lauritz Knudsen iMMR Motor Protection Relay at MCC panels using the

[Contact Us](#)



## Testing & Commissioning

Electrical testing, commissioning, acceptance testing & 24/7 emergency field service by NETA-certified technicians & field engineers.

[Contact Us](#)

## Senior Power Systems Protection Engineer

Experience implementing communication protocols such as IEC61850 (MMS/GOOSE/SMV), MODBUS, IEC60870-5-101/103/104, in protection relays. Substation control

[Contact Us](#)



## Schneider P127BA0V6D3FE0 Protection Relay

Schneider MiCOM P127BA0V6D3FE0 Overcurrent and Earth Fault Protection Relay Schneider MiCOM Px20 series 3-phase and earth fault comprehensive protection relay, Type B earth current input

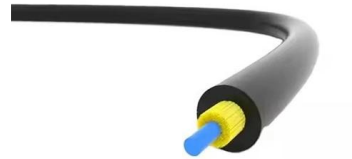
[Contact Us](#)



## Protection Relay Testing and Commissioning

Electronic power amplifiers are applied to supply precise voltages and currents of high stability to the protection relay under test. The inclusion of a computer in the test system allows more

[Contact Us](#)



## Testing and Commissioning Procedures for Medium Voltage Motor

By following the testing and commissioning procedures outlined in this blog, including preliminary checks, functional testing, verification of settings, and endurance and performance testing, one can

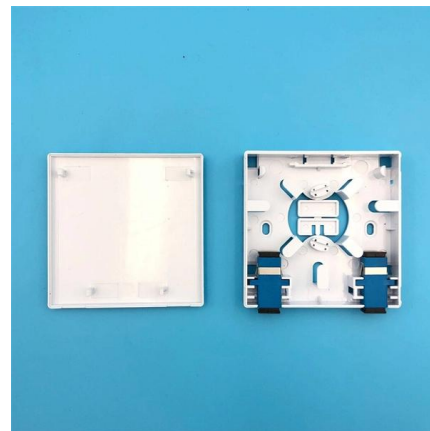
[Contact Us](#)



## Basler Electric: Power Systems by Littelfuse

Reliable real-time protection and control for critical power systems. Ensure operational safety, minimize downtime, and maintain system integrity with our

[Contact Us](#)



## Installation and commissioning

The health of the protection system should be ensured at regular intervals by applying suitable testing methods. Checking other design aspects such as the application configuration, including relay

[Contact Us](#)



### **Substation Commissioning: The Advanced Solution , Megger**

The PMM-2 is designed to perform fast, accurate checking and testing of protective relay and meter installations during their commissioning and in routine maintenance. Fully automatic insulating oil

[Contact Us](#)



### **Urgent! Relay technician jobs in Wisconsin**

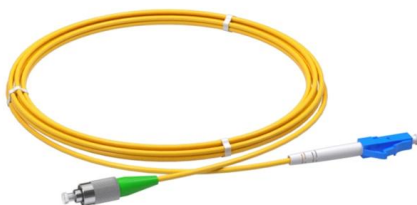
SOLV Energy is looking for a Senior Relay Technician to lead testing, commissioning, and troubleshooting of protective relays and control systems in Wisconsin. The role involves heavy travel

[Contact Us](#)

### **SEL-710-5 Motor Protection Relay , Schweitzer Engineering Laboratories**

The SEL-710-5 provides synchronous motor protection, starting control, broken rotor bar detection, and now arc-flash protection.

[Contact Us](#)



### **Relay Technician Jobs, Employment in Dallas, TX , Indeed**

The Senior Relay Technician plays a critical role in ensuring the safe, reliable operation of medium- and high-voltage utility substations through advanced protective relay testing, commissioning, and

[Contact Us](#)

### **All Products , Schneider Electric India**



Motor Starters and Protection Components  
Ranges: 2 Motor starters are key electromechanical switches. They start and stop motors, providing overload Contactors and Protection Relays

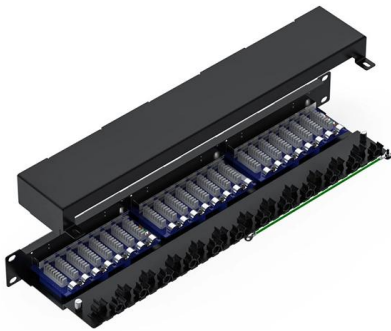
[Contact Us](#)



### ANSI (IEEE) Protective Device Numbering

Protective Device Numbers Protective relays are commonly referred to by standard device numbers. For example, a time overcurrent relay is designated a 51 device, while an

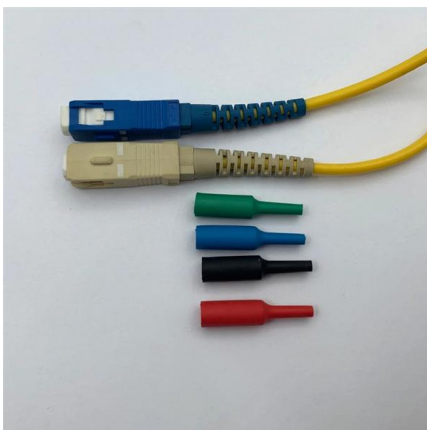
[Contact Us](#)



### PROTECTIVE RELAY TESTING

A comprehensive testing program should simulate fault and normal operating conditions of the relay. Acceptance testing, commissioning, and startup will include control power tests, current transformer

[Contact Us](#)



### Installing and Maintaining Protective Relay Systems

Performing thorough commissioning or installation tests on the protection system is an important step when installing a new terminal or when modifying a protection system.

[Contact Us](#)



## testing & commissioning of the protection relays

The testing & commissioning of the protection relays can be done by different testing software and hardware. In this training, we have used OMICRON Test Universe,

[Contact Us](#)



## Schneider P127BA0V6D3FE0 Protection Relay

Schneider MiCOM P127BA0V6D3FE0 Overcurrent and Earth Fault Protection Relay Schneider MiCOM Px20 series 3-phase and earth fault comprehensive protection relay, Type B earth current input (1A)

[Contact Us](#)

## Motor protection and control REM630 IEC

REM630 is a comprehensive motor management relay for the protection, control, measurement and supervision of medium and large sized asynchronous and synchronous motors in the manufacturing

[Contact Us](#)



## Contact Us

For datasheets, pricing, or custom fiber access solutions, please visit:  
<https://www.frindel.es>