

High-density dual-port information panel fixed stock available





High-density dual-port information panel fixed stock available



Global Panel Exchange Center

56K+ LCD panel models, 54K+ LCD panel datasheets, 10M+ pcs panel stocks, 420+ panel sizes, 100+ specification items, 150+ LCD panel brands, 40+ LCD panel applications.

[Contact Us](#)

2RU High Density Panels and Interconnect

Configurations: Available as either an empty panel or a panel kit that includes field installable interconnect panels (bulkheads) for immediate deployment. Front and

[Contact Us](#)



2U HDA Rack Mount Fiber Patch Panel, High-Density

High-Density Rack Mount #FPP-HDA-2U 2U HDA Rack Mount Fiber Patch Panel, High-Density 2U rack mount fiber optic panel Designed for high-density installations -- provides 33% more connections

[Contact Us](#)

DIGITUS® Modular High Density Patch Panel, shielded

DN-91424 EAN 4016032343318 Modular Patch Panel, shielded, 48-port label field, 1U, rack mount, black RAL 9005 The DIGITUS® 48 Port 1U Modular Patch Panel ensures a High Density with the



760209940 , HD-1U

760209940 , HD-1U High Density 1U modular cassette sliding Panel, accepts (4) G2 modules or MPO panels, providing up to 48 duplex LC ports, or up to 32 MPO ports

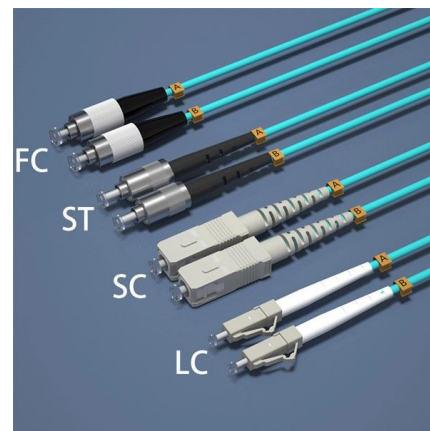
[Contact Us](#)



2U High-Density Blank Patch Panel

By being able to fully configure each individual port, Network® Blank Patch Panels allow greater flexibility during network planning and installation. These High

[Contact Us](#)



SYSTIMAX® Solutions Ultra High Density Fiber Solution Guide

The SYSTIMAX 360(TM) UHD solution is built to support high-density data center applications by innovatively configuring high-performance products into a smaller space. Designed at CommScope

[Contact Us](#)





Zhaolong Dual-Port Information Panel ZW862KJ 86 Type Dual-Port

This dual-port panel is compatible with standard keystone modules including Cat5e, Cat6, and Cat6a. Designed to fit standard 86-type electrical wall boxes, it allows easy installation and ensures

[Contact Us](#)



48 Port High Density 2U unloaded keystone panel with

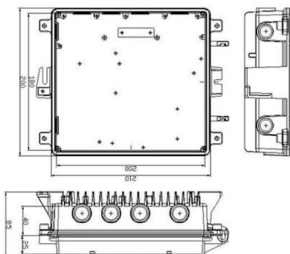
Shaxon's Premium High Density Unloaded Keystone Feed-through Panels feature 48 Keystone Ports designed to be used with various Keystone media types. Our

[Contact Us](#)

High-Density Fiber Patch Panel Solutions

Modular patch panel solutions allow you to seamlessly and conveniently integrate equipment with 10 Gb, 40 Gb and 100/120 Gb speeds to meet your connectivity needs today - and cost-effectively future

[Contact Us](#)



Cat 6 High-Density Feed Through Patch Panel

Our 2u 48 port Cat6 high-density feed through patch panels offer great protection and can withstand the most extreme conditions.

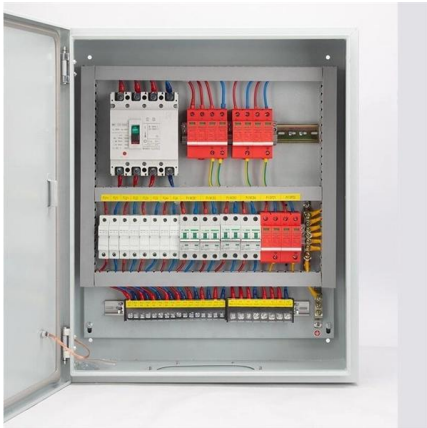
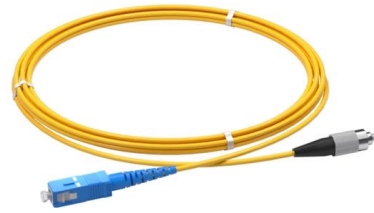
[Contact Us](#)



High Density 2U Sliding Fiber Splice Panel for holding

N Axis Infotech - Offering High Density 2U Sliding Fiber Splice Panel for holding up to 8 G2 modules (96 duplex LC ports) at INR 500/piece in Ahmedabad, Gujarat.

[Contact Us](#)



144 Port 2U Fiber Optic Patch Panel Single mode MTP-LC

Super Compact Design with Panel depth of less than 7" Premium Front & Rear Wire Management Trays Included To request more information or quantity pricing for

[Contact Us](#)

Cisco High-Density Fiber Patch Panel, Simplex, MPO

This high-density solution improves access to small form factor connectors and creates unobstructed handling space, providing greater flexibility

[Contact Us](#)



Fiber Panel

The NOVA High Density (HD) Fiber Panel provides interconnect or cross-connect capability for up to 384 LC high-density ports, delivering a scalable fiber

[Contact Us](#)



PreCONNECT® SMAP-G2 High Density (HD) panel

With a port density of up to 72 LC-Duplex or MTP ports or 144 MDC ports per height unit a very high utilization of the front surface is achieved. A service-friendly

[Contact Us](#)



24-PORT HIGH DENSITY BLANK PATCH PANEL

24-Port High Density version provides room for 24 ports in one rack mount space (1 RMS). Features: Total Number of Ports: 24 Number of RJ-11 Ports: 24 Color: Black Form Factor: Rack-mountable

[Contact Us](#)

High-Density Fiber Patch Panel Solutions

High-Density Fiber Patch Panel Solutions Future-Proofing Your Fiber and Copper Network Infrastructure Growing demand for faster access to larger volumes of data, emerging high-speed network

[Contact Us](#)



24-Port High-Density Patch Panel, Cat6a, Shielded,

Manage and organize your Cat6a input and output cable connections with this dual-IDC rack-mount patch panel. 24 RJ45 ports in just a half-U of rack space.

[Contact Us](#)



High Density Array Connectors

High-Density Arrays Samtec high-density array connectors feature a variety of pitches, stack heights, and configurations for maximum routing, grounding, and

[Contact Us](#)



Optical distribution frames and patch panels

Made from high-quality steel and electrostatic spray finished, this patch panel is ideal for optical telecommunication systems, FTTH, WAN, TV networks and cable terminal branch connections.

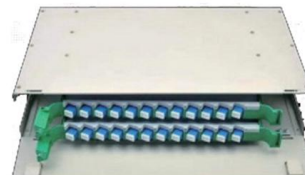
[Contact Us](#)



PreCONNECT® SMAP-G2 SD panel for data center

SMAP-G2 SD is available as distribution panel to accommodate all kinds of factory assembled cables and as splice panel. A service-friendly assembly of the PFPs,

[Contact Us](#)



Modular High Density Fiber Optic Panel , 1U 4 Slots

1U high density modular fiber optic panels can terminate, organize and distribute up to 48 fibers. This panel is designed to be mounted on 19" rack systems and it has

[Contact Us](#)





48-PORT HIGH DENSITY BLANK PATCH PANEL

Package Contents: High Density Flush Blank Patch Panel 4 x #12-24 x 5/8" Pan Head, Pilot Point Machine Screws 8 x 6-Port High Density Bezel

[Contact Us](#)



Fiber Panel System , FS

· Large Stock Large stock in the EU, US and AU, most items can be shipped the same day. With the growing demands for high-density and high-efficiency cabling, FS fiber panel system is geared up for

[Contact Us](#)

e2XHD High Density Fiber Patch Panels

The e2XHD Patching System provides a high-density solution for enterprise and data center applications where fast deployment and simple maintenance are priorities.

[Contact Us](#)



Contact Us

For datasheets, pricing, or custom fiber access solutions, please visit:
<https://www.frindel.es>