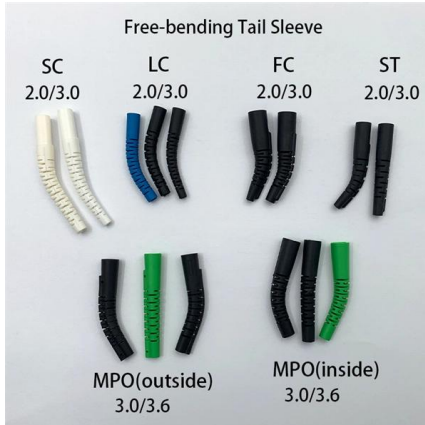


Flat steel must be present inside the cable tray





Flat steel must be present inside the cable tray



B-Line series Cable Tray Design Considerations

Cable tray must be capable of supporting not just the weight of the cable, but also the weight of any equipment or materials attached to the cable tray. Additionally, dynamic environmental elements

[Contact Us](#)

Best Practices for Installing Cables in Trays

Learn the best practices for installing cables in trays. This guide covers essential steps, technical requirements, and key details

[Contact Us](#)



NEC Article 392 Guide: Ensuring Compliance for Cable

Master NEC Article 392 with our comprehensive guide. Learn essential cable tray requirements for installation, grounding, and fill capacity to

[Contact Us](#)



CABLE TRAY INSTALLATION PROCEDURE

5. Cable tray installation shall preferably be installed flat in buildings or operating structures. Tray shall run as far as possible under flooring and walkways. Only in

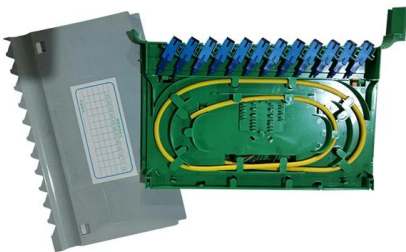
[Contact Us](#)



Best Practice Guide to Cable Ladder and Cable Tray Systems

Cable ladders and cable trays should be mounted far enough off the floor or roof to allow the cables to exit through the bottom of the cable ladder or cable tray.

[Contact Us](#)



Cable Tray Technical Guide A practical guide to product selection and

Cable tray installed in a hazardous location must contain only those cables that are appropriate for this type of environment as defined in Chapter 5 of the NEC.

[Contact Us](#)



Installation Of Cable In Cable Trays: NEC, Safety

Installation of Cable in Cable Trays ensures proper routing, cable management, NEC compliance, grounding, fire safety, and load capacity.

[Contact Us](#)

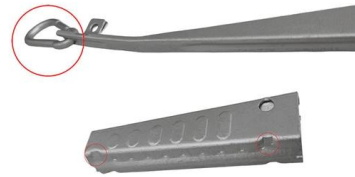




Technical Guidelines for Cable Tray Installation and

Cable tray installation must comply with specific technical standards to ensure electrical safety, system reliability, and long-term maintainability. This document

[Contact Us](#)



FAQ , Cable Tray Institute

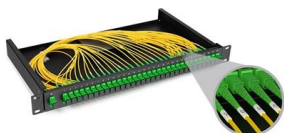
Question: Is it necessary to provide tie-down cables installed in a cable tray? Answer: Yes; cables are tied down in cable trays to keep the cables in the cable tray, to maintain spacing between cables, or

[Contact Us](#)

Cable Tray Installation

Learn everything about cable tray installation with our complete guide. Discover types, steps, and safety tips for efficient electrical cable management.

[Contact Us](#)



Installation of Cable Tray, Trunking And Accessories

2. Purpose This method statement for the Installation of Cable Tray, Trunking, and Accessories shows and explains the procedure must be followed to install the cable tray and

[Contact Us](#)



Best practice guide to cable ladder and cable tray

Cable ladder and cable tray systems The following recommendations are intended to be a practical guide to ensure the safe and proper installation of

[Contact Us](#)



Cable Tray Grounding: Electrical and Non-Power Conductors

Examples of non-power or low energy circuits include: nonconductive optical fiber cables, Class 2 and 3 remote control signaling and power limiting circuits. However, to protect

[Contact Us](#)



CABLE TRAYS GENERAL INFORMATION AND

Cable tray systems are to be installed so they are accessible. If possible 300mm minimum should be left above or between installed systems to allow for cable

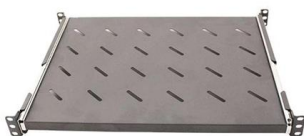
[Contact Us](#)



IEC Standard for Cable Tray: Complete Technical Guide

It applies to cable trays made of steel, stainless steel, aluminum, or other metallic materials. The standard ensures these systems can handle the

[Contact Us](#)





Cable Tray Manual: NEC Article 392 Guide

In-depth guide to cable trays, focusing on NEC Article 392. Covers types, selection, installation, and safety standards for electrical systems.

[Contact Us](#)



Cable Tray, Metallic Tray System Installation and

This article is about Installation and Commissioning Cable Tray, Metallic Tray System for commercial buildings, plants and refinery projects as per international

[Contact Us](#)

Cable tray

In the electrical wiring of buildings, a cable tray system is used to support insulated electrical cables used for power distribution, control, and communication. Cable

[Contact Us](#)



ITER Cabling Handbook

A necessary space must be devoted to workers on the cable trays under the false floor (cable tray modifications, pulling and crimping cables) to avoid walking on it.

[Contact Us](#)



Common Issues in Steel Cable Tray Installations

Whether installed as stainless steel cable trays, these components offer durable and flexible solutions for routing cables safely. However, improper

[Contact Us](#)



Technical Guidelines for Cable Tray Installation and

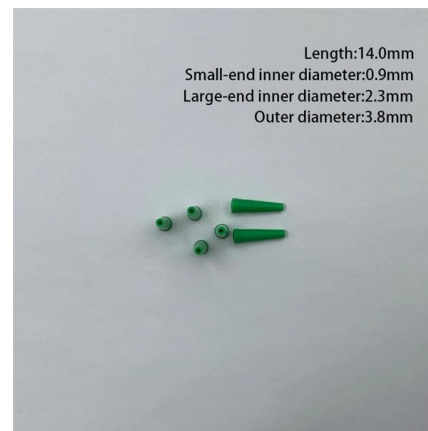
Use dedicated splice plates and bolts. Ensure firm electrical continuity through grounding jumpers at each connection point. Sharp edges or foreign debris inside

[Contact Us](#)

Practices for grounding and bonding of cable trays

If an EGC cable is installed in or on a cable tray, it should be bonded to each or alternate cable tray sections via grounding clamps (this is not required by the NEC® but it is a desirable practice).

[Contact Us](#)



Cable Tray Installation Rules (NEC 392) - Electrical Trader

All metallic cable trays must be grounded as outlined in NEC Article 250.96, even if the tray isn't being used as an equipment grounding conductor (EGC). This precaution helps prevent

[Contact Us](#)

If the trench contains more than one row of cable tray, a space must be left in front of them to allow an access to workers inside the trench all along cable tray's path and 900mm free space will be requested.

[Contact Us](#)



Cable Tray Questions , Cable Tray Institute

This issue of the CableGram presents questions and CTI answers to these questions that have been asked by interested persons and organizations concerning the application of cable tray systems. We

[Contact Us](#)

NEC Article 392: Cable Tray Systems

It provides rules for acceptable wiring methods that can be installed in cable trays, including conditions for use. It addresses uses permitted and not permitted for

[Contact Us](#)



Contact Us

For datasheets, pricing, or custom fiber access solutions, please visit:
<https://www.frindel.es>