

Fiber Optic Disk Array Single-Channel Upgrade



IP65/IP55 OUTDOOR CABINET

ALUMINUM

OUTDOOR ENERGY STORAGE CABINET

OUTDOOR EQUIPMENT CABINET



Fiber Optic Disk Array Single-Channel Upgrade



CineRAID Reactor 16Gb Fibre Channel Hardware RAID

The CineRAID ARC-9224S is a high performance 24bay 16Gb Fibre Channel Rack featuring single-upgradable or dual-active (active-active or passive-active)

[Contact Us](#)

Fibre Channel Hard Drive Interface

Fibre channel is a type of SCSI hard drive technology used in high-end systems with multiple hard drives installed. Using optical fiber to connect devices, fibre channel supports full-duplex data transfer rates

[Contact Us](#)



Fiber Array Units , FAUs for Next-Generation (Next-Gen)

Corning fiber array units (FAUs) are engineered for long-haul, metro, and data center applications, delivering ultra-precise fiber alignment with low insertion loss and high optical return loss. Leveraging

[Contact Us](#)

Fiber Arrays - 1D, 2D, packaging, fiber endfaces,

Fiber arrays are 1D or 2D arrays of optical fibers, used for coupling to photonic circuits, telecom signals, and laser beam combining.

[Contact Us](#)



Fundamentals of Fibre Channel

Fibre Channel is a high-speed network technology used to connect server to data storage area network. It handles high performance of disk storage

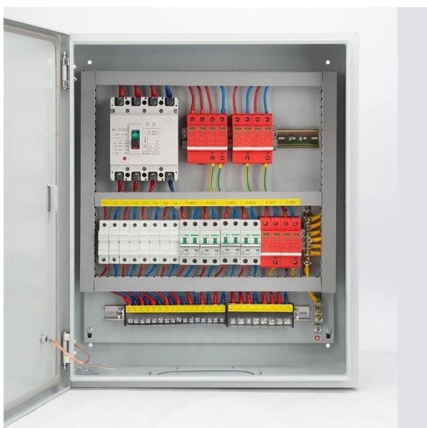
[Contact Us](#)



Supermicro Motherboards , Hahrd Disk Direct

Elevate your storage solutions with our Fibre Channel Hard Drives. Ideal for high-speed networks, these drives offer superior performance and reliability.

[Contact Us](#)



Dell,EMC AX4-5 Fibre Channel Storage Arrays With Microsoft

This document provides information and specific configuration tasks that enable you to configure your Microsoft® Windows Server® failover cluster with Dell,EMC AX4-5 Fibre Channel storage array(s).

[Contact Us](#)



Configuring Fibre Channel Storage Arrays

Configuring Fibre Channel With Dell MD3600f/3620f/MD3660f Series Storage Arrays This document provides information about configuring Fibre Channel communication between the host server and

[Contact Us](#)



Fiber Arrays

Fiber Arrays PHIX Photonics Assembly offers a broad range of high quality v - g roove optical fiber arrays for photonic integrated circuit (PIC) connections. Our

[Contact Us](#)

Fiber Array Unit (FAU) Series

There are other functions within long-haul and metro networks that require FAUs, and they are amplifier/CP module, coherent mixer, multiport wavelength switch, multicast switch, and optical

[Contact Us](#)



Fiber Array Unit (FAU) Series

Corning OEM offers a broad range of Fiber Array Units (FAUs) for long-haul, metro networks and data center applications. With customizable V-groove chips and covers, and Corning's

[Contact Us](#)





High Speed VCSELs and VCSEL Arrays for Single and Multicore Fiber

VCSELs with an integrated mode filter for single mode emission have enabled transmission at 25 Gbps over > 1 km of multimode fiber and a speed-distance product of 40 Gbps·km. Dense VCSEL arrays

[Contact Us](#)



Fibre Channel Disk Arrays

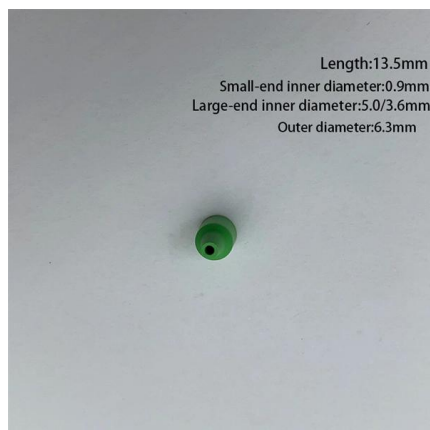
I picked up a few EMC fibre channel disk arrays recently. I know there's no practical purpose - practical would be to replace 15 x 600GB drives with a

[Contact Us](#)

Fiber Channel SFP: A Complete Guide for Storage Networks

This guide explains what a Fiber Channel SFP is, how it works, the main FC SFP types and speeds, and when it should be chosen over Ethernet-based alternatives.

[Contact Us](#)



Optimizing Fibre Channel SAN Storage Performance

If the environment is properly configured, the SAN fabric components (particularly the SAN switches) are only minor contributors because of their low latencies relative to servers and storage arrays. Make

[Contact Us](#)



Fiber channel storage array upgrade , VMware vSphere

Because our new array uses SCSI3 and old one did not IDs will change on the LUNs. Just wondering if I am overlooking any steps when migrating to new fiber channel SAN.

[Contact Us](#)



Dell PowerVault MD3 Fibre Channel Array Series

Deployment scalability and flexibility to a single MD3 Fibre Channel storage system. Storage capacity can be expanded

[Contact Us](#)

Fibre Channel Storage Solutions

Modern Storage Area Networks (SANs) using Broadcom Gen7 Fibre Channel optics provide the bandwidth and flexibility needed to quickly and securely store and

[Contact Us](#)



Chapter 1 Installing and Maintaining Sun StorEdge 3510 and 3511

Install a storage array in a new cluster, before the OS and Sun Cluster software are installed. Add a storage array to an existing cluster. You can install the StorEdge 3510 and 3511 FC RAID arrays in

[Contact Us](#)



Fibre Channel HDDs: Powering Tomorrow's Data Demands

Introduction In the ever-evolving landscape of data storage, Fibre Channel Hard Disk Drives (HDDs) have emerged as a robust and high

[Contact Us](#)



Fibre Channel Basics

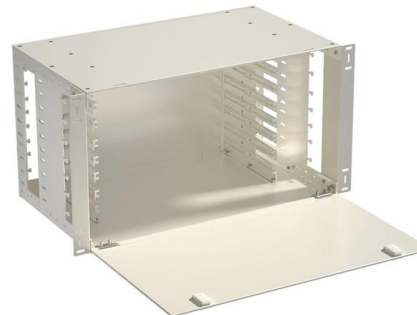
Apple chose Fibre Channel for high-end storage connectivity because of three main benefits: its high bandwidth, its proven reliability, and its guaranteed in-order delivery of data packets.

[Contact Us](#)

Using ESXi with Fibre Channel SAN

ESXi supports Fibre Channel (FC), a storage protocol that the SAN uses to transfer data traffic from hosts to shared storage. This section provides introductory information about how to use ESXi with

[Contact Us](#)



Ciprico FibreSTORE Disk Array

The base unit is available with four Fibre Channel drives that allow users the flexibility to build from there, one drive at a time. FibreSTORE handles any combination of four to nine disk drives in a

[Contact Us](#)



Shop Fiber Channel interface Hard Drives for Business

Fiber Channel Hard Disk Drives provide high-bandwidth for data transfer. Built for Speed, FC HD Drives Reduce Load time while improving Performance.

[Contact Us](#)



Modernize your SAN with Cisco MDS 64G Fibre Channel

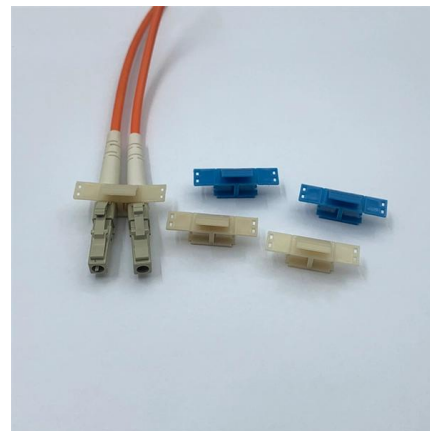
Today's Storage Area Networks (SAN) need to evolve to 64G Fibre Channel to support the increasing application workloads and performance requirements.

[Contact Us](#)

Fiber Channel SFP: A Complete Guide for Storage Networks

Storage array ports The SFP converts electrical signals from the device into optical signals for transmission over fiber, and vice versa. More importantly, FC SFP modules are designed to support

[Contact Us](#)



4.2 Fibre Channel (FC) SAN Components

Fibre Channel (FC) SAN Physical Components The key FC SAN physical components are network adapters, cables, and interconnecting devices. These

[Contact Us](#)



Best Practices for Fibre Channel Storage with ESXi

Check with your storage representative if your storage system supports Storage API - Array Integration hardware acceleration features. If it does, refer to your vendor documentation to enable hardware

[Contact Us](#)



What Is Fibre Channel? , Enterprise Storage Forum

Fibre Channel is a high-speed networking technology used to connect servers and storage devices. Learn more about Fibre Channel and how it works.

[Contact Us](#)

Contact Us

For datasheets, pricing, or custom fiber access solutions, please visit:
<https://www.frindel.es>