



FTTH uses fiber-wound tubing for low loss



FTTH-THEORY

To put it simply, FTTH (Fiber To The Home) is about getting fiber out to each in-dividual household. Two basic variants exist, PON (Passive Optical Network) and AON (Active Optical Network).

[Contact Us](#)

What Is Fiber To The Home (FTTH)?

What is the difference between FTTH, FTTP and FTTB? FTTH, fiber to the premises (FTTP) and fiber to the building (FTTB) are often used interchangeably. They all

[Contact Us](#)



Fiber Optics In The Home

Discover the benefits of Fiber to the Home (FTTH) and Fiber In the Home (FITH) for faster internet, more bandwidth, and future-proof connectivity.

[Contact Us](#)

Design, implementation and evaluation of a Fiber To The Home

FTTH based on Giga Passive Optical Network (GPON) technology is one techniques that can provide triple play services at a reasonable cost. It uses only passive equipment except at the



Fiber to the Home (FTTH): A Comprehensive Guide

Fiber to the home (FTTH) is the use of fiber optic cable to directly connect to customer homes or premises. FTTH provides an end-to-end fiber optic

[Contact Us](#)



What is fiber to the home (FTTH)?

Learn about fiber to the home and compare it to other methods of cable connectivity, such as coaxial, twisted pair and other fiber-to-the-x infrastructures.

[Contact Us](#)



Defining FTTH: Fiber to the Home Explained

Fiber to the Home (FTTH) delivers broadband via optical fiber, offering faster speeds, low latency, and reliability.

[Contact Us](#)



Low-Loss Optical Fiber



Low loss optical fibers are defined as optical fibers that exhibit minimal attenuation, with current records reaching as low as 0.142 dB/km at 1560 nm, which enables efficient long-distance data transmission.

[Contact Us](#)



netplusbroadband

Hier sollte eine Beschreibung angezeigt werden, diese Seite lässt dies jedoch nicht zu.

[Contact Us](#)



Why and When FTTH or Fibre Optics in the Home? , FTTH Council

Unlike traditional twisted pair or coaxial cable networks, fibre optic cables made of thin strands of glass or plastic fibres can transmit data over long distances using light signals that are less prone to

[Contact Us](#)



Low-Loss Optical Fiber

Low loss optical fibers are defined as optical fibers that exhibit minimal attenuation, with current records reaching as low as 0.142 dB/km at 1560 nm, which enables efficient long-distance data transmission.

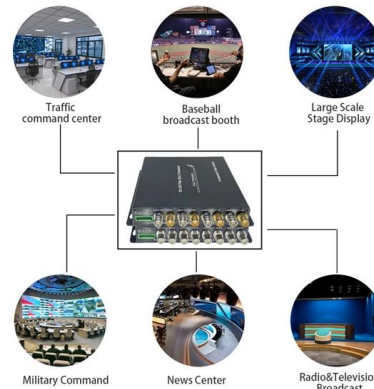
[Contact Us](#)



Low-bending-loss single-mode fibers for fiber-to-the-home

Abstract: Recent progress on low-bending-loss single-mode optical fibers for fiber-to-the-home (FTTH) is reviewed. Designing and manufacturing for three types of fibers-a step-index-profile fiber, a trench

[Contact Us](#)



What Is Fiber to the Home (FTTH)? , Fiber Explained

4. What are the main advantages of FTTH? The advantages of FTTH include higher bandwidth (up to 1 gigabit or more), low network latency for online gaming and video conferencing,

[Contact Us](#)

(PDF) Ultra-low bending loss single-mode fiber for FTTH

Abstract and Figures A new ultra-low bending loss single-mode fiber with ring comprising nanometer sized features is designed and manufactured.

[Contact Us](#)



Fiber To The Home Network Design

There is really no way to generalize on the design process for fiber to the home (FTTH) networks - or any fiber optic network for that matter - since every system

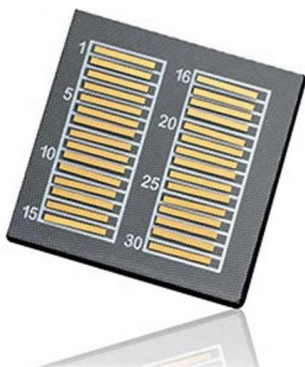
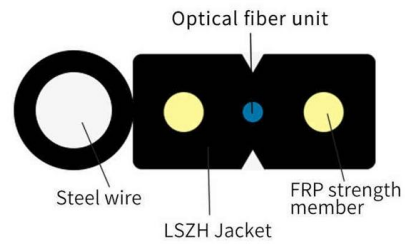
[Contact Us](#)



FTTH Glossary

These cables leverage ClearCurve optical fiber to minimize and eliminate loss due to bending, but have a smaller 2.9 mm diameter to make them more aesthetically pleasing, when required, and to enable

[Contact Us](#)



Optical Fiber Drop Cable Explained: Type, Application & FTTH

Discover optical fiber drop cables for FTTH networks: types (indoor/outdoor, figure-8, duct), applications in homes/enterprises, and key features like LSZH sheaths & FRP reinforcement.

[Contact Us](#)

FTTH Optical Fibre: The Guide to High-Speed Internet

It stands in stark contrast to older technologies like FTTC (Fiber to the Cabinet), where fibre stops at the street cabinet, and the final leg is completed

[Contact Us](#)



What is FTTH (Fiber to the Home)?

What is FTTH FTTH, or Fiber to the Home, is a cutting-edge broadband communication technology that uses optical fiber to deliver high

[Contact Us](#)



Single-mode optical fiber design with wide-band ultra low bending-loss

Numerical simulation shows that the proposed fiber can support single-mode and low bending loss operation by connecting the fiber with single-mode optical fibers.

[Contact Us](#)



FS Community

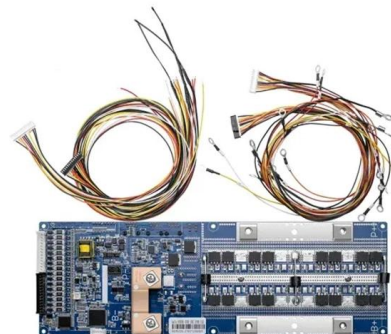
Hier sollte eine Beschreibung angezeigt werden, diese Seite lässt dies jedoch nicht zu.

[Contact Us](#)

A comparative selection of the low-loss optical fibers designed for

Fiber-to-the-home (FTTH) technology provides the ability to transmit telecommunication data at a maximum level. In order to achieve this technology, fibers with the lowest bending and splice losses

[Contact Us](#)



Fiber to the Home (FTTH): A Simple Introduction -

FTTH, also called Fiber to the Home, is a broadband connection that delivers high-speed internet directly to living spaces by using PON architecture.

[Contact Us](#)



A review on the designed low loss single mode optical fiber used in

Fiber-to-the-home (FTTH) technology provides the ability to transmit telecommunication data at a maximum level. In order to achieve this technology, fibers with the lowest bending and splice

[Contact Us](#)



Understanding FTTH Architecture

A single particle mated into the core of a fiber can cause significant back reflection, insertion loss and even equipment damage. Visual inspection of fiber optic connectors is the only way to determine if

[Contact Us](#)

Contact Us

For datasheets, pricing, or custom fiber access solutions, please visit:
<https://www.frindel.es>