

Eye Mapper Function





Overview

THE SOLUTION: here we present gazeMapper, an open-source tool for automated mapping and processing of eye-tracking data. gazeMapper can: (1) Transform head-centered data to planes in the world, (2) synchronize recordings from multiple participants, (3) determine data quality. Some advanced features of EyeMap are listed as follows: Please upgrade your Flash Player This is the content that would be shown if the user does. The gaze tracking systems consists of two major functionalities, feature extraction and determination of gaze mapping functions. The gaze mapping functions determine the coordinates on the screen based on interpolation or.



Eye Mapper Function



Validation of Accommodative Responses Measured with the

Purpose: : The EyeMapper is an instrument designed to perform fast, global aberrometry. This study compares the central refraction measurements for distance and near obtained with the EyeMapper, a

[Contact Us](#)

Eye Dome Lighting in Global Mapper

#GlobalMapper provides a variety of ways to apply sunlight or scene #lighting to the map view, whether it is to create stunning visuals or to perform #analys

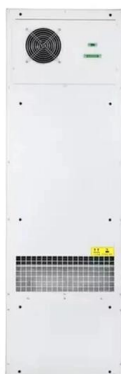
[Contact Us](#)



Peripheral refraction and higher-order aberrations with cycloplegia and

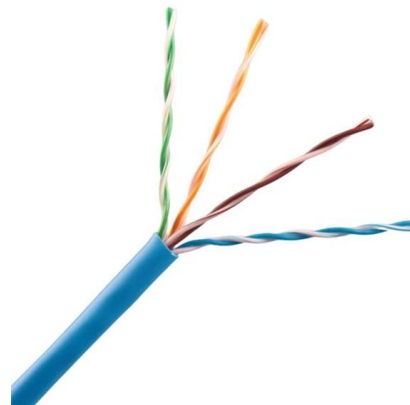
To determine if a fogging lens ameliorates accommodative effects driven by the closed-view design of the BHVI-EyeMapper (EM) instrument. We compared cycloplegic refraction and

[Contact Us](#)



gazeMapper: A tool for automated world-based analysis of gaze data

The study requires that eye movement data from one eye tracker is mapped into the view of another eye tracker or into that of an overview camera with which a simultaneous recording is made, either for



Pupil Cloud

Use Pupil Cloud to upload your eye tracking recordings, organize data, enrich data with powerful AI + cloud computing tools, visualize results, and download data to

[Contact Us](#)



gazeMapper: A tool for automated world-based analysis of gaze data

The solution: here we present gazeMapper, an open-source tool for automated mapping and processing of eye-tracking data. gazeMapper can: (1) Transform head-centered data to planes in

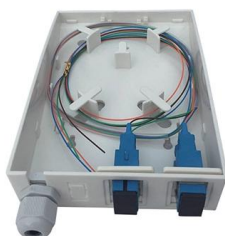
[Contact Us](#)



The BHVI-EyeMapper: Peripheral Refraction and Aberration Profiles

They also found no changes in the shape of the peripheral refraction profiles as a function of accommodation. The study by Lundström et al. 28 used a modified Hartmann-Shack

[Contact Us](#)





A new mapping function in table-mounted eye tracker

mapping function in table-mounted eye tracker,"
Proc. SPIE 10620, 2017 International Conference
on Optical Instruments and Technology:

[Contact Us](#)



Validation of a quasi real-time global aberrometer: the EyeMapper

Interest in measuring peripheral refraction rapidly and accurately has been stimulated by increasing evidence that the eye's peripheral refractive state can influence axial growth. In response to this, a

[Contact Us](#)

Eye pattern

From a mathematical perspective, an eye pattern is a visualization of the probability density function (PDF) of the signal, modulo the unit interval (UI). In other words,

[Contact Us](#)



The effect of mapping function on the accuracy of a

In a video-based eye tracker the pupil-glint vector changes as the eyes move. Using an appropriate model, the pupil-glint vector can be mapped to

[Contact Us](#)

SourceForge



EyeMap is a visualization and analysis tool for viewing, filtering, and processing eye movement (gaze) data from reading or other psychology experiments. Some

[Contact Us](#)



Mapping Functions in Gaze Tracking

The mapping function is based on Gaussian process interpolation method specified by mean and variance functions. The mean value of the interpolated point corresponds to the estimated position of

[Contact Us](#)



The effect of mapping function on the accuracy of a video-based eye

In a video-based eye tracker the pupil-glint vector changes as the eyes move. Using an appropriate model, the pupil-glint vector can be mapped to coordinates of the point of regard (PoR).

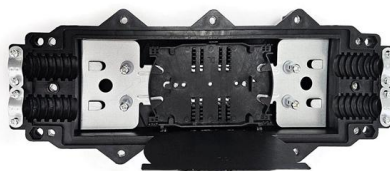
[Contact Us](#)



Neon

Reference Image Mapper is a powerful tool to automatically map gaze onto features/objects in the environment. A heatmap of gaze data mapped onto the

[Contact Us](#)



Nonlinear Eye Gaze Mapping Function Estimation via



Most existing remote eye gaze trackers cannot work under natural head movement due to the difficulty of building a gaze mapping function that can

[Contact Us](#)



SourceForge

Welcome to the EyeMap Please cite our EyeMap paper not only our tools (thanks) EyeMap is a visualization and analysis tool for viewing, filtering, and processing

[Contact Us](#)

The effect of mapping function on the accuracy of a video-based eye

The accuracy that can be achieved with a simple one camera, one IR source video-based eye tracker is evaluated for various combinations of calibration set and mapping model.

[Contact Us](#)



(PDF) The BHVI-EyeMapper

Methods: Using customized schematic eye models for myopia in a ray tracing algorithm, peripheral aberrations, including the refractive error, were calculated

[Contact Us](#)

Invisible



Detections consist of the bounding box of the face. This provides you with insight into when and where faces are visible to a subject. This enrichment automatically

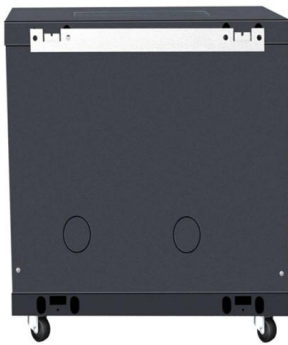
[Contact Us](#)



gazeMapper: A tool for automated world-based analysis of

The study requires that eye movement data from one eye tracker is mapped into the view of another eye tracker or into that of an overview camera with which a simultaneous recording is

[Contact Us](#)



(PDF) gazeMapper: A tool for automated world-based analysis of gaze

Automated methods to map eye-tracking data to a world-centered reference frame (e.g., screens and tablespots) are available. These methods usually make use of fiducial markers. However,

[Contact Us](#)



The BHVI-EyeMapper: peripheral refraction and aberration profiles

They also found no changes in the shape of the peripheral refraction profiles as a function of accommodation. The study by Lundström et al. 28 used a modified Hartmann-Shack setup to

[Contact Us](#)





Validation of a quasi real-time global aberrometer: the EyeMapper

Interest in measuring peripheral refraction rapidly and accurately has been stimulated by increasing evidence that the eye's peripheral refractive state can influence axial growth. In response

[Contact Us](#)



(a) The BHVI-EyeMapper (EM), Brien Holden Vision

Download scientific diagram , (a) The BHVI-EyeMapper (EM), Brien Holden Vision Institute, Sydney, Australia and (b) three-dimensional view describing the

[Contact Us](#)



A new mapping function to improve the accuracy of a

The accuracy that can be achieved with a simple one camera, one IR source video-based eye tracker is evaluated for various combinations of

[Contact Us](#)



Study of Polynomial Mapping Functions in Video-Oculography Eye

Although the functionality of these systems is generally acceptable, there has been no thorough comparative study to date of how the mapping equations affect the final system response.

[Contact Us](#)





gazeMapper: A tool for automated world-based analysis of gaze data

Automated methods to map eye-tracking data to a world-centered reference frame (e.g., screens and tabletops) are available. These methods usually make use of fiducial markers. However, such

[Contact Us](#)



Contact Us

For datasheets, pricing, or custom fiber access solutions, please visit:
<https://www.frindel.es>