

Exposed cable trays in stairwells





Overview

Fire-resistant cable trays are often specified in stairwells and escape corridors. Their role is to prevent tray deformation or collapse that could: Obstruct evacuation paths Expose live cables to occupants or firefighters This is a key consideration in buildings with long evacuation. They help prevent cables from falling, short-circuiting, or losing functionality during fire exposure.

Understanding the types of cable containment systems, including trays, trunks, and conduits, helps engineers and contractors select the best solution for performance, safety, and compliance. Each system offers unique benefits depending on the environment, cable load, and future accessibility. Is your cable tray system optimized for safety, dependability, space and cost savings?

Cable tray (or cable ladder) systems are a popular alternative to electrical conduit systems, as they have an outstanding record for dependable service, design flexibility and cost savings in commercial and.



Exposed cable trays in stairwells



Best practices for underfloor cable management

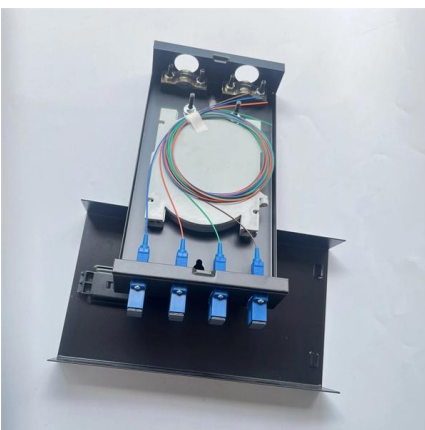
Modern data center designs must develop cable organization plans with considerations to account for day-to-day operation, operational efficiency of equipment, optimal performance, and the facility's

[Contact Us](#)

Exposed Run Tray Cables

Exposed Run Tray Cables - U.S. This Wire Wisdom addresses some of the most frequently asked questions regarding a supplemental rating for type TC, ITC and PLTC tray cables --the ER rating for

[Contact Us](#)



Cable Tray Technical Guide A practical guide to product selection and

Cable Tray Technical Guide A practical guide to product selection and installation This guide for engineers and installers has been developed by ABB as a practical reference regarding cable tray

[Contact Us](#)

Types of Cable Containment Systems: Trays, Trunks,

Discover the main types of cable containment systems--trays, trunking, and conduits--and learn how to choose the right solution for safe,

[Contact Us](#)



Enhancing Workplace Safety with Cable Trays , Reducing Hazards

Improve workplace safety by reducing hazards and accidents with the installation of cable trays. Learn about the benefits, best practices for installation, and maintenance tips that can help

[Contact Us](#)

Important design considerations for cable ladder and

Fig 2 shows an example of a steel wire cable tray/basket arrangement with a range of accessories available for site alterations to allow for installation in

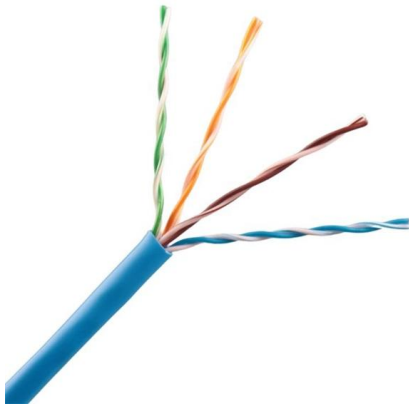
[Contact Us](#)



Types of Cable Trays: Ladder, Perforated, Basket, Solid

Explore all types of cable trays--ladder, perforated, basket, solid, and channel. Learn their uses, materials, pros, cons, and key differences.

[Contact Us](#)



Fireproof installations above fire protection ceilings

The maximum deformation of the cable trays in the event of fire must be minimised in order to reduce the height of the installation, whilst taking the minimum distance to the false ceiling into account.

[Contact Us](#)



Cable Tray Technical Guide A practical guide to product selection and

Cable tray installed in a hazardous location must contain only those cables that are appropriate for this type of environment as defined in Chapter 5 of the NEC.

[Contact Us](#)



Electrical Safety First: How Cable Trays Protect Your

Ensure maximum electrical safety with cable trays! Learn how they prevent wire damage, improve organization, and enhance equipment

[Contact Us](#)





Fire-resistant Cable Tray in High-Rise Buildings: Best Practices

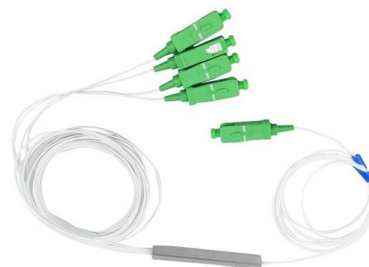
Fire-resistant cable trays are often specified in stairwells and escape corridors. Their role is to prevent tray deformation or collapse that could: Obstruct evacuation paths. Expose live cables

[Contact Us](#)

Cable Tray Systems in Ducts, Plenums and Other Air Handling Space

Cable Tray Systems in Ducts, Plenums and Other Air Handling Space The objective of this article to provide clear information as to the use of cable tray in those areas covered by Section 300-22 of the

[Contact Us](#)



Types of Cable Typically Used in Cable Tray

Types of Cable Typically Used in Cable Tray The purpose of a cable tray system is to support, route, and protect cable as part of the cable management system.

[Contact Us](#)

Method Statement installation of Cable Trays and Ladders

This method statement covers the site installation of the cable tray & ladders and the requirements of checks to be carried out.

[Contact Us](#)





2021 Changes in the Canadian Electrical Code: Tray

This is the third article of the ongoing series detailing significant changes for the 2021 Canadian Electrical Code Part I (CE Code) that may impact

[Contact Us](#)



The Ultimate Guide to Tray Cables: Types, Applications and

When it comes to powering, automating and protecting facilities?from factories and petrochemical plants to data centers and high-rises?the right cable makes all the difference. Among

[Contact Us](#)

Exposed conduits in stairwells , Information by Electrical

Re: Exposed conduits in stairwells That's what I thought, I believe he was using the fact that you can't run mechanical piping or plumbing in a stairwell for his argument. The key point being that

[Contact Us](#)



B-Line series Cable Tray Design Considerations

The most serious hazard to cable in cable trays is when the cables are exposed to significant amounts of hot metal spatter during construction or maintenance from torch cutting of metal and welding activities.

[Contact Us](#)





Fire-resistant Cable Tray in High-Rise Buildings: Best Practices

Fire-resistant cable trays contribute directly to this goal by protecting the electrical and communication systems that support life-safety functions. By following best practices in design,

[Contact Us](#)

2021 Canadian Electrical Code, Part 1 Updates -- Article 2

Rule 12-2202, Insulated conductors and cables in cable trays, has significant changes. First is a new Subrule 1) that recognises the revised

[Contact Us](#)



CABLE TRAY SYSTEMS GUIDE

Cable Tray Systems Guide HUBBELL Hubbell Wiring Device-Kellems and Hubbell Premise Wiring are divisions of Hubbell Incorporated, a U.S. headquartered manufacturer with over 130 years of

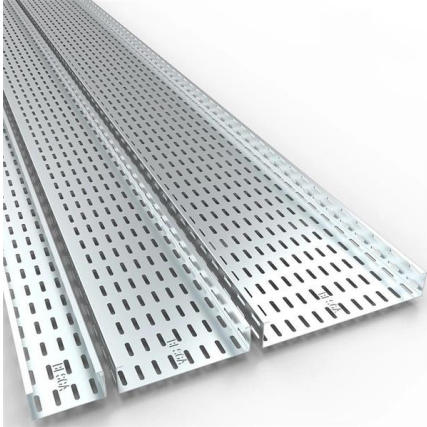
[Contact Us](#)

Conceal wiring for safety in open-ceiling environments

Instead of using ladder-tray systems, which can allow cables to droop between the rungs, install solid or ventilated-bottom cable trays, also known as channel or

[Contact Us](#)





NEC Article 392: Cable Tray Systems

It provides rules for acceptable wiring methods that can be

[Contact Us](#)

Effective weatherproofing for cable trays , Jones

Weatherproofing cable trays is critical, especially for data centres. It protects the building envelope from adverse weather conditions.

[Contact Us](#)



FactSheet

Cable trays feature flexibility unmatched by conduit, as cables are easier to mark, remove and find in cable trays. Cable trays are available in a number of different configurations, including ladder,

[Contact Us](#)

Contact Us

For datasheets, pricing, or custom fiber access solutions, please visit:
<https://www.frindel.es>