

Erbium-doped fiber amplifier OSFP in Zimbabwe





Erbium-doped fiber amplifier OSFP in Zimbabwe



(PDF) Review of Erbium-doped fiber amplifier

In particular, the Erbium-doped fiber amplifier (EDFA) is one example of an optical fiber amplifier that is widely known for use in amplifying optical

[Contact Us](#)

Erbium-doped fiber amplifier , Description, Example & Application

Erbium-doped fiber amplifier is a device used to amplify optical signals without converting them to electrical signals. It uses erbium-doped fibers to amplify the signal.

[Contact Us](#)



Doped Fiber Amplifier

Erbium-doped fiber amplifier (EDFA) is defined as a fiber optic device that amplifies light signals in the 1550 nm wavelength region by adding erbium to the fiber and using a 980 nm pumping

[Contact Us](#)



Erbium-doped Fiber Amplifiers

Erbium-doped fiber amplifiers are by far the most important fiber amplifiers in the context of long-range optical fiber communications; they can efficiently amplify light in the 1.5-um wavelength region, where



Doped Fiber Amplifier

18.5.2 Doped fiber amplifier When optical fibers are doped with rare-earth ions such as erbium, neodymium, or praseodymium, the loss spectrum of the fiber can be drastically modified. During the

[Contact Us](#)

Advances in Erbium-Doped Fiber Amplifiers

The emergence of efficient and powerful broadband optical amplifiers, in particular the optical fiber amplifier and erbium-doped fiber amplifier (EDFA), has more than anything spurred the

[Contact Us](#)



Design and Analysis of Erbium Doped Fiber Amplifier for Optical

The main decision of this paper is to execute Erbium Doped Fiber Amplifier (EDFA) in the scope of C-band. The gain and commotion figure at every variety of both length and siphon control are

[Contact Us](#)



A photonic integrated circuit-based erbium-doped amplifier

Erbium-doped fiber amplifiers revolutionized long-haul optical communications and laser technology. Erbium ions could provide a basis for

[Contact Us](#)



Modeling erbium-doped fiber amplifiers , IEEE Journals & Magazine

Erbium-doped fiber amplifiers are modeled using the propagation and rate equations of a homogeneous two-level laser medium. Numerical methods are used to analyze the effects of optical modes and

[Contact Us](#)

Optical amplifiers and lasers using erbium-doped optical fibers

We report properties on Erbium-Doped Fiber for amplifier and fiber laser applications. Key factors such as pump source, power, and fiber length were analyzed to optimize system

[Contact Us](#)



Erbium-Doped Fiber Amplifiers (EDFAs): Foundations

The combined beam passes through the erbium-doped fiber, where the signal is amplified through interaction with the excited erbium ions. The output

[Contact Us](#)



Erbium-Doped Fiber

Erbium doped fiber amplifier (EDFA) is defined as a crucial component in advanced wavelength division multiplexing (WDM) systems that provides optical gain over a wide wavelength range, typically

[Contact Us](#)



(PDF) Review of Erbium-doped fiber amplifier

In particular, the Erbium-doped fiber amplifier (EDFA) is one example of an optical fiber amplifier that is widely known for use in amplifying optical signals.

[Contact Us](#)



Erbium-Doped Fiber

An erbium-doped fiber amplifier is one of the most popular optical devices in modern optical communication systems as well as in fiber-optic instrumentation. EDFAs provide many advantages

[Contact Us](#)



Optical Amplifier--EDFA (Erbium-doped Fiber Amplifier)

An Erbium-doped Fiber Amplifier (EDFA) is a device used to boost the strength of optical signals in fiber-optic communication systems. In EDFA in

[Contact Us](#)



Noise characteristics of erbium-doped fibre



amplifier with different

Noise figure characteristics of erbium-doped fibre amplifiers (EDFAs) with different optical feedback directions, namely counter- and co-feedback, and without feedback are presented. It was

[Contact Us](#)



Erbium-Doped Fiber Amplifiers For High-Speed Fiber-Optic Communication

The bandwidth, gain, saturation power and noise of the erbium-doped fiber-amplifier (EDFA) are reviewed in the context of high-speed optical communication systems. Recent

[Contact Us](#)

Erbium-doped Fiber Amplifiers

Erbium-doped fiber amplifiers use erbium-doped fibers. They typically operate in the 1.5-um spectral region and are most frequently used for telecom systems.

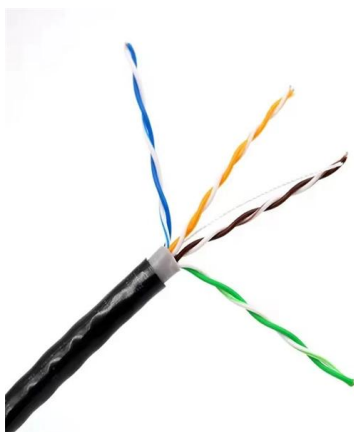
[Contact Us](#)



How an Erbium-Doped Fiber Amplifier (EDFA) Works

Discover how the Erbium-Doped Fiber Amplifier (EDFA) uses quantum physics to defeat signal loss and power global fiber optic networks.

[Contact Us](#)



SUPER-FAST ERBIUM DOPED FIBER



The Super-Fast Erbium Doped Fiber Amplifier was developed to address these fasttransient conditions, with sub-us suppression time. This EDFA is designed to

[Contact Us](#)



A photonic integrated circuit-based erbium-doped amplifier

We demonstrate a photonic integrated circuit-based erbium amplifier reaching 145 milliwatts of output power and more than 30 decibels of small-signal

[Contact Us](#)



Erbium-doped fiber: Amplifiers: What everyone needs to know

This paper discusses erbium-doped fiber amplifiers and its applications. EDFA gain performance and fiber optimization, EDFA saturation and output power, amplified spontaneous

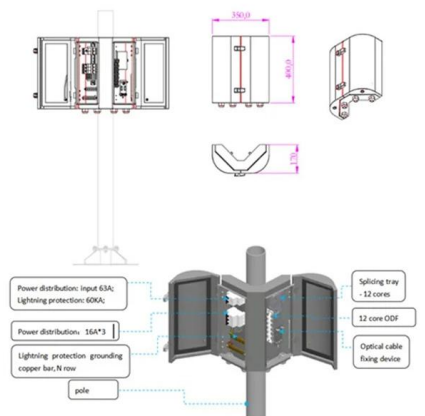
[Contact Us](#)



Erbium-Doped Fiber Amplifiers (EDFA)

Erbium-Doped Fiber Amplifiers or EDFAs are a type of optical amplifiers that employ a doped optical fiber as a gain medium to amplify an

[Contact Us](#)

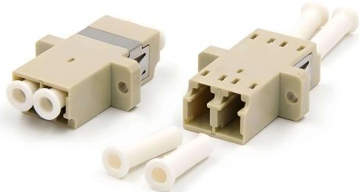




BASIC PHYSICS OF ERBIUM-DOPED FIBER AMPLIFIERS

Abstract A description is made of the basic physics and characteristics of erbium-doped fibers amplifiers (EDFA's). The spectroscopic features and laser properties of erbium-doped silica glass are outlined

[Contact Us](#)



Erbium-Doped Fiber Amplifiers: Ultimate Guide

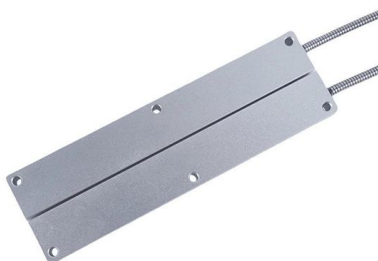
Discover the principles, applications, and benefits of Erbium-Doped Fiber Amplifiers in modern optics and telecommunications.

[Contact Us](#)

Optimized Gain Performance Analysis of Erbium Doped

This paper optimized several of erbium doped fiber parameters to obtain high-performance characteristic at pump wavelengths of $\lambda_p = 980$ nm and

[Contact Us](#)



Basic research for designing the erbium doped fiber amplifier

Abstract. The paper presents some of the author results obtained in the research on the optical fiber amplifiers and Quantum Well (QW) laser diodes used in long distance optical communications as

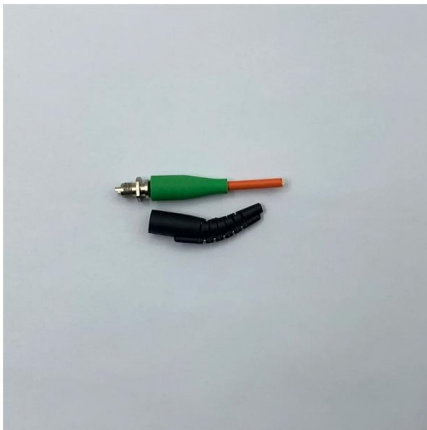
[Contact Us](#)



EDFA (Erbium Doped Fiber Amplifier) - Physics and

EDFA (Erbium-Doped Fiber Amplifier) is an optical device used to compensate optical signal attenuation caused by fibers and components, to increase optical

[Contact Us](#)



MATLAB simulation for optimization of Erbium-Doped fiber amplifier

The present research paper develops a comprehensive MATLAB simulation-based optimization technique for enhanced performance of Erbium-Doped Fiber Amplifiers. The study

[Contact Us](#)

Contact Us

For datasheets, pricing, or custom fiber access solutions, please visit:
<https://www.frindel.es>