

# **Electrical Distribution Box Installation Standards**





## Overview

---

The IEC (International Electrotechnical Commission) and BS 7671 (British Standard for Electrical Installations) both provide essential requirements for electrical installations, including those for fuse boards like garage unit, consumer unit and distribution board. Design requirements for low voltage distribution boxes cover NEC, IEC, and safety standards to ensure reliable, compliant electrical installations. This Electrical Installation Wiki is a collaborative platform, brought to you by Schneider Electric: our experts are continuously improving its content, collaboration is also open to all.



## Electrical Distribution Box Installation Standards

---



### Power dsitribution box installation standard , Anssin

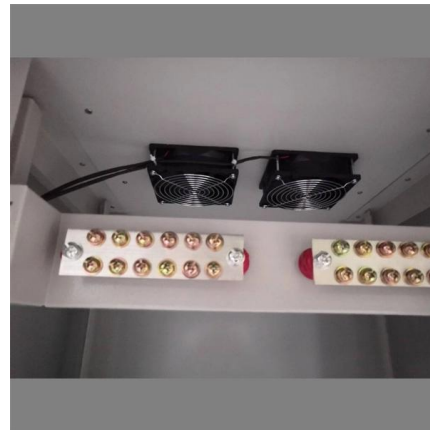
The power distribution box has also become a power distribution unit, which can safely distribute power to other devices in the circuit.

[Contact Us](#)

### Requirements And Specifications For Installation Of

The installation requirements and specifications of Distribution box involve many aspects, including site selection, fixing method, wiring specifications

[Contact Us](#)



### Electric Panel Installation Method Statement

This document provides a method statement for installing and terminating electric panels and distribution boxes. It outlines 4 steps: 1) Pre-installation preparation

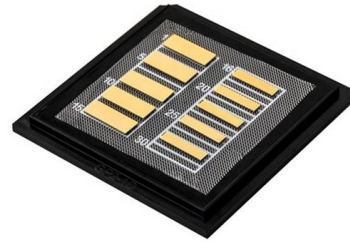
[Contact Us](#)



### How to Install a Distribution Box--A Comprehensive

Distribution box manufacturing and installation are governed by internationally recognized and regional safety standards. Key benchmarks

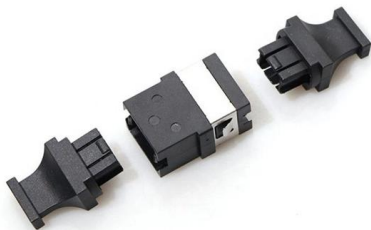
[Contact Us](#)



### **Grounding System Installation Standards for Distribution Boxes and**

Hey there! If you're working with electrical systems, you know that grounding isn't just some bureaucratic requirement--it's literally the difference between a safe, functional system and a potential disaster.

[Contact Us](#)



### **How to Install a Cable Distribution Box Safely and**

Whether it is residential buildings, commercial facilities or industrial sites, the correct and safe installation of distribution boxes is crucial to ensure

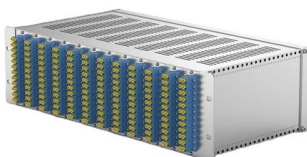
[Contact Us](#)



### **Distribution boards components**

Electrical equipment used in residential premises are commonly certified by third party ensuring conformity with the relevant standards. In this case, equipment shows the certification Mark

[Contact Us](#)





## IEC Standard for Power Distribution Board Design and

Designing a power distribution board is not just about placing components inside a metal box. It requires a deep understanding of international

[Contact Us](#)



## Microsoft Word

GENERAL Electrical installations must comply with the current electricity standards in the host country and canton (Switzerland and Geneva) and must comply with the applicable requirements, rules and

[Contact Us](#)

## How to Install a Cable Distribution Box Safely and

This article provides a detailed overview of the entire process of installing a distribution box, from pre-installation preparation to post-installation

[Contact Us](#)



## International-electrical-standards-regulations

BS 7671, "Requirements for Electrical Installations" is published by the Institution of Engineering and Technology and BSI, it governs all domestic electrical installations (and many other types).

[Contact Us](#)



## SINGAPORE STANDARD Code of practice for temporary electrical installations

This part of the Code of practice deals principally with temporary electrical installations for building operation and work of engineering construction. It covers installations operating at voltages up to

[Contact Us](#)



### How to confirm whether the installation location of the

The electrical distribution box plays a vital role in the power system. It is responsible for distributing electricity to various circuits and equipment.

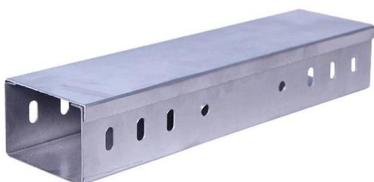
[Contact Us](#)

### Installation Standards and Safety Precautions for Distribution Boxes

Switch box and its control of fixed electrical equipment horizontal distance should not exceed 3m. 10. Distribution boxes, switch boxes should be installed in dry, ventilated and room



[Contact Us](#)



### Summary of key points for construction and installation of distribution

The construction and installation points of distribution boxes and switch boxes are summarized as follows: 1. Select qualified products that meet national standards and safety requirements.

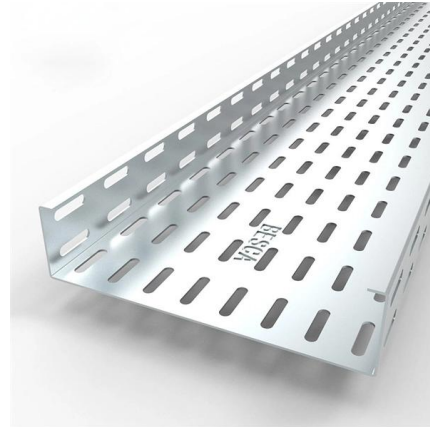
[Contact Us](#)



## How to Install a Distribution Box--A Comprehensive

First of all, you need to have a simple understanding of the definition of a distribution box, and make it clear which kind of distribution box you want to

[Contact Us](#)



## Latest Requirements for Distribution Box Installation under the US

The latest NEC updates prioritize adaptive solutions for modern energy demands. With homes now packing solar arrays, EV chargers, and smart-home systems, distribution boxes work

[Contact Us](#)

## Electrical Installation Guide, IEC Standards , Schneider

Our complimentary Electrical Installation Guide provides you with the guidance

[Contact Us](#)



## Electrical Installation Guide

The Electrical Installation Guide (wiki) has been written for electrical professionals who must design safe and energy efficient electrical installation, in compliance with international

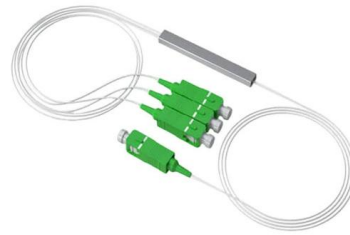
[Contact Us](#)



## Size determination, installation method and wiring mode

The distribution box is the central hub of the home circuit and the general control of our daily power consumption. It is an indispensable electrical equipment. If there

[Contact Us](#)



## Design requirements and standards for low voltage

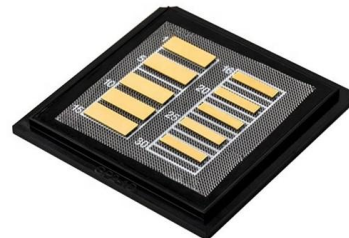
You must make safety your top priority when working with low voltage distribution boxes. Design requirements help you follow important standards like

[Contact Us](#)

## IEC / BS 7671 Codes for Consumer Unit and Distribution

The IEC (International Electrotechnical Commission) and BS 7671 (British Standard for Electrical Installations) both provide essential requirements for electrical

[Contact Us](#)



## Design requirements and standards for low voltage

You need to understand the main standards and codes that guide the safe design and use of low voltage distribution boxes. These rules help you meet

[Contact Us](#)





## Electrical Installation Guide, IEC Standards , Schneider

The Electrical Installation Guide is dedicated to professionals who design, install, inspect, and maintain low to medium-voltage electrical installations in compliance

[Contact Us](#)



### Electrical enclosure

An electrical enclosure, power box (US), [citation needed] or feeder pillar (UK), [citation needed] is a cabinet for electrical or electronic equipment to mount

[Contact Us](#)



### The Complete Guide to Distribution Box: Installation, Types & More

Consult with qualified electrical professionals to ensure your distribution boxes meet current standards and can accommodate future needs. Your proactive approach to electrical

[Contact Us](#)



## Contact Us

---

For datasheets, pricing, or custom fiber access solutions, please visit:  
<https://www.frindel.es>