

Eight-port Telecom Chassis





Eight-port Telecom Chassis



8-port FXS/FXO PCM Multiplexer

This product provides 8 telephone channels and transmits them over an E1 signal (supporting FXO/FXS/E& M 2/4-Wire). The device is rack-mountable and offers

[Contact Us](#)

Allen Tel ATR-TM8 Basic Telecom Module, 8-Port

Designed for data, voice, audio and video applications Snap-in design 8-Port Basic Module.

[Contact Us](#)



US9986654B2

More particularly, the present disclosure relates to chassis for housing telecommunications equipment. the present disclosure relates to a high density mounting arrangement for mounting

[Contact Us](#)

Tactical Deployable Compute Systems

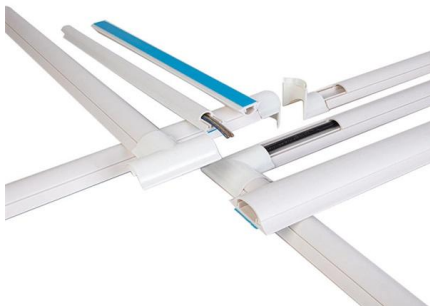
KLAS VOYAGER 8/8+ As traditional reachback network architectures are supplemented by the need to analyse data on the edge of the network, your



Sangoma A108DE Octal (8-Port) T1/E1/J1 PCI-E Card

The A108 is the octal port version of Sangoma's family of Advanced, Flexible Telecommunications (AFT) hardware designed for optimum support of voice and

[Contact Us](#)



ICC Telephone Expansion Module, 8 Ports, Standard

Each line supports 8 bridged outputs, expandable to 16 or 32 outputs depending on line configuration. This version provides standard telephone distribution without

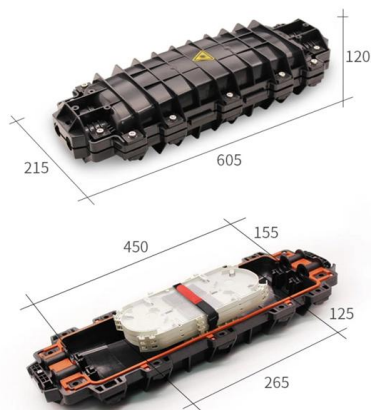
[Contact Us](#)



8 port Ethernet Switch Card for Loop AM3440 and O9500

The SW8 is an 8-port Ethernet switch card for the Loop Telecom AM3440 A, B and C chassis and O9500 single slots. The SW8 is an ideal Ethernet switch for industrial applications.

[Contact Us](#)

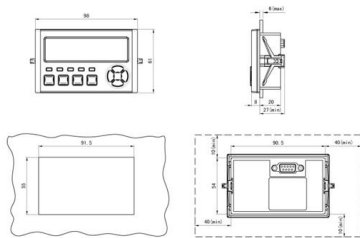




AM-3440 DACS, T1, E1, V.35, Fractional T1 MUX

This means that one or more of the WAN ports can be used as a Drop & Insert function with fractional E1/T1 lines, which can be muxed into a full E1/T1 line. The larger chassis supports 64 T1

[Contact Us](#)



DMF-CI-8 [Crestron Electronics, Inc.]

The DMF-CI-8 is a 2-space rack-mountable chassis designed to house up to eight Crestron® DM-NVX-C or DMCF series cards. Any of these cards may be installed in any slot.

[Contact Us](#)

SCP 8 Port RJ45 Telecom Module

Increase Telephone and Communication Lines
Increase the number of telephone lines and audio output locations in your home or business with the SCP 8 Port



[Contact Us](#)

8 Port RJ45 Telecom Module TM-8

Description 8 Port RJ45 Telecom Module TM-8
The TM-8 is designed for telecom distribution systems. Supports up to 4 analog telephone lines. The TM-8 also



[Contact Us](#)



ICC Telephone Expansion Module, RJ-31X, 8 Ports,

ICC's Telephone Expansion Module distributes up to four incoming lines to eight locations. Each line supports 8 bridged outputs, expandable to 16 or 32 outputs

[Contact Us](#)



Telecom Expansion Module, 8-Port , Allen Tel Products,

Product Overview 8-port telecom expansion module. Designed for data, voice, audio and video applications Snap-in design 8-Port Expansion Module

[Contact Us](#)

WTO8U80 OLT chassiss - IT & Telecom solution and

WTO8U80 is a chassis XG (S)PON platform which support GPON/XG (S)PON and fully compliance with ITU-T G.984/G.987/G.988/G.9807 standards. Coordinate

[Contact Us](#)



PICMG , AdvancedTCA

The Advanced Telecom Computing Architecture (AdvancedTCA®) specifications, denoted PICMG 3.X, are a series of PICMG specifications, designed to provide an open, multi

[Contact Us](#)



Carrier Routing System

Cisco CRS-1 Backbone Core Router A standalone Carrier Routing System is deployed with a Line card chassis (LCC). The three main functional units of this LCC are the Line cards, Switching fabric and

[Contact Us](#)



Yeastar TG800L 8Ports LTE-VoIP Gateway - Wavesat Telecoms

Yeastar TG800L is an 8-channel GSM/LTE gateway that helps businesses flexibly connect between IP-PBX systems and mobile networks. With the ability to support 4G SIM cards, Yeastar TG800L

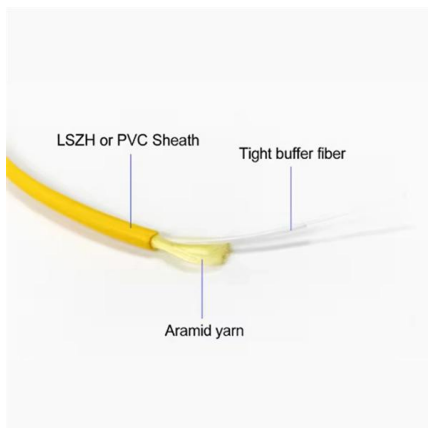
[Contact Us](#)

Fiber Optic Networking Equipment for Datacom and Telecom

Products for your IT networking - fiber optic and copper media converters, SFP+, XFP, GBIC fiber optic transceivers, TDM over IP, video transceivers, Ethernet extenders, and more.



[Contact Us](#)



EX8200 Ethernet Line Cards Datasheet

EX8200-8XS: The EX8200-8XS is an eight-port 10GBASE-X line card with compact, modular SFP+ fiber optic interfaces, enabling up to 64 line-rate 10-Gigabit Ethernet ports in an EX8208 chassis and 128

[Contact Us](#)



GPON OLT Specs for Network Engineers

The document provides specifications for a standalone GPON OLT device with 8 PON ports. The OLT complies with relevant GPON standards, has 1U rack mount

[Contact Us](#)



Recycled, Multipurpose & Durable telecom chassis

Leading telecom chassis on Alibaba at irresistible deals. These telecom chassis have superb, tasteful designs.

[Contact Us](#)



Keysight AresONE 800GE OSFP800 4/8-Port Test

Keysight AresONE 800GE OSFP800 is available in 8-port, 4-port, and 2-port fixed chassis models with full- and reduced-performance options. The chassis are 2RU

[Contact Us](#)



PICMG_3.2_ATCA_WP_130.fm

The ATCA 3.0 base specification defines the frame (rack) and shelf (chassis) form factors, ATCA Terminology core backplane fabric connectivity, power, cooling, management interfaces, and the The

[Contact Us](#)





Cisco Nexus N9K-C9808 Switch

Cisco Nexus N9K-C9808 Switch 8-slot chassis supports eight line card slots and three power supply trays The Cisco Nexus 9800 Series modular switches expand

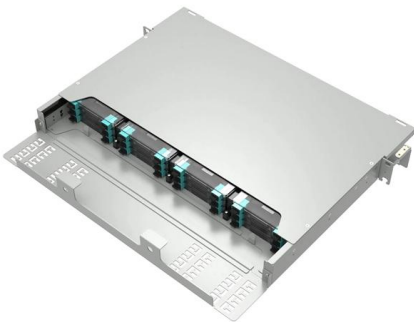
[Contact Us](#)



EX8208 Ethernet Switch Datasheet

Fully configured, a single EX8208 chassis can support up to 384 Gigabit Ethernet or 64 10-Gigabit Ethernet ports at wire speed, or 320 10-Gigabit Ethernet ports in shared bandwidth applications,

[Contact Us](#)



Gsm Gateway 8 Port

8 Ports GSM VOIP SK Gateway For Call Origination and Termination in GSM SK 8 channels series SMS Gateway is used to smoothly transit SMS between mobile

[Contact Us](#)



Hyperconverged Tactical Data Center

NUTANIX HYPERCONVERGED INFRASTRUCTURE KLAS TELECOM VOYAGER HARDWARE Nutanix leverages web-scale engineering and Klas Telecom's purpose-built Voyager tactical a

[Contact Us](#)





Contact Us

For datasheets, pricing, or custom fiber access solutions, please visit:
<https://www.frindel.es>