

Egypt OTN Router QSFP28





Egypt OTN Router QSFP28



100G QSFP28-OPTONE TECHNOLOGY LIMITED

100G QSFP28 series includes SR4,LR4,ER4 and ZR4,using LC or MPO receptacle,with the features of QSFP28 MSA Compliant, IEEE802.3bm

[Contact Us](#)

FST-112G

LPMode Pin FIBERSTAMP QSFP28 SR4operate in the low power mode (less than 1.5 W power consumption) This pin active high will decrease power consumption to less than 1W.

[Contact Us](#)



QSFP28-100G-CWDM4 - 100Gbps QSFP28 Transceiver Module

The QSFP28-100G-CWDM4 is a high-performance optical transceiver module designed for 100 Gigabit Ethernet applications. It uses CWDM4 multiplexing technology with four lanes of 25Gbps each,

[Contact Us](#)



QSFP28 , Alcatel-Lucent Nokia® , Transceivers

Quad small form pluggable double density 28 (QSFP28) transceivers improve port economy and density with four lanes of simultaneous data.

[Contact Us](#)



VO-Net 25M 100G QSFP28 AOC: Buy Online at Best Price in Egypt

Integrates QSFP28 transceivers with factory-terminated multimode optical fiber to deliver stable 100Gbps performance with low latency, lightweight structure, and improved airflow over copper

[Contact Us](#)



TX-VG1530 , N300 Wireless VoIP GPON Router , TP-Link Egypt

What This Product Does TP-LINK's N300 Wireless VoIP GPON router TX-VG1530 is a next-generation Gigabit Passive Optical Network (GPON) integrated access device (IAD), ideal Fiber to The Home

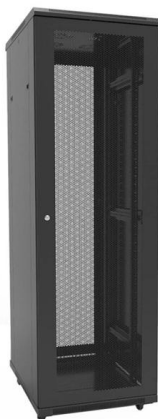
[Contact Us](#)



Axiom Qsfp28 AOC Cable for Arista, 10m (AOC-Q-Q-100G-10M-AX)

Buy Axiom Qsfp28 AOC Cable for Arista, 10m (AOC-Q-Q-100G-10M-AX) online on Amazon.eg at best prices. Fast and Free Shipping Free Returns Cash on Delivery available on eligible purchase.

[Contact Us](#)



Cisco Network Convergence System 1004



NCS 1004 OTN Xponder Line Card The Cisco NCS 1004 OTN-XPonder Line Card embeds a flexible core FPGA (Field Programmable Gate

[Contact Us](#)



QSFP28 100GE-LR4 OTU4 SM 13xxnm 10km 7.3dB LC

The SO-QSFP28-LR4 is a QSFP28 form-factor transceiver for 100Gbps Ethernet (100GBASE-LR4) and OTN (OTU4) applications. It is intended for use in inter- and intra-connect applications within and

[Contact Us](#)

QSFP28-LR420-OTU4-I

Features Hot-pluggable QSFP28 form factor Supports 103.1Gb/s and 112Gb/s aggregate rates Power dissipation [Contact Us](#)



QSFP28-100G-BIDI - 100Gbps QSFP28 Transceiver Module

The QSFP28-100G-BIDI is a high-performance optical transceiver module designed for 100 Gigabit Ethernet applications. It utilizes bidirectional (BiDi) technology to transmit and receive data over a

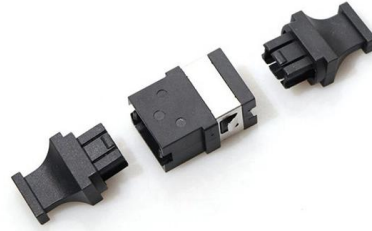
[Contact Us](#)





Hier sollte eine Beschreibung angezeigt werden, diese Seite lässt dies jedoch nicht zu.

[Contact Us](#)



Transceivers Explained: SFP vs SFP+ vs SFP28 vs QSFP+ vs QSFP28

Discover the key differences between SFP, SFP+, SFP28, QSFP+, and QSFP28 transceivers. Learn which is right for your network.

[Contact Us](#)

100GE/OTN QSFP28 ER4 Lite

Description This product is a 100Gb/s transceiver module designed for optical communication applications compliant to QSFP28 4WDM 40km MSA/100GBASE-ER4 Lite/OTU4 standard. The



[Contact Us](#)



Arista Networks Compatible 100GBASE-LR4 and

The Arista Networks Compatible QSFP28 Dual Rate Optical Transceiver Module

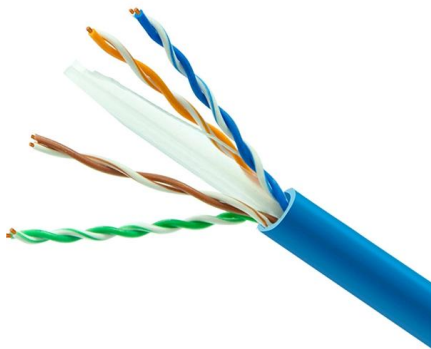
[Contact Us](#)



Cisco QSFP28 Manuals , ManualsLib

Manuals and User Guides for Cisco QSFP28. We have 2 Cisco QSFP28 manuals available for free PDF download: Connecting Manual, User Manual

[Contact Us](#)



QSFP28 vs QSFP+ vs QSFP - Difference &

This document will focus on QSFP, QSFP+ vs QSFP28. Though they look very similar in physical appearance but the transmit data rates are quite

[Contact Us](#)

What is QSFP & QSFP28 Port? Everything You Need to

What is a QSFP28 port used for? QSFP28 is not a new product; it is widely used in High-bandwidth data center switches, backbone routers, and

[Contact Us](#)



HPE Aruba Networking CX 8100 Switch Series

The Aruba CX 8100 series includes industry-leading line rate ports with 1/10GbE (SFP/SFP+) and 40/100GbE (QSFP+/QSFP28) connectivity in a compact 1U form factor. 4x10Gbps and 4x25Gbps

[Contact Us](#)



HG6 N300 Wi-Fi GPON ONT

HG6 is an intelligent routing passive optical network terminal in Tenda FTTH solution. HG6 provides 4 LAN ports(1*GE,3*FE), a voice port to meet users' requirements for enjoying the

[Contact Us](#)



The Ultimate Guide to Cisco QSFP28 Transceiver Modules for 100G

Discover the wide range of high-density and low-power 100G Ethernet connectivity options offered by Cisco's QSFP28 transceiver modules for data center and high-performance computing

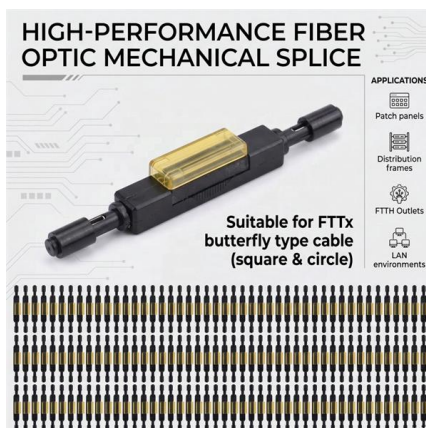
[Contact Us](#)



100GBASE-LR4 and 112GBASE-OTU4 QSFP28 1310nm 20km

100GBASE-LR4 and 112GBASE-OTU4 QSFP28 1310nm 20km Transceiver Datasheet , FS. This product is a 100Gb/s transceiver module designed for optical communication applications compliant

[Contact Us](#)



Netlink GPON ONT 1 GE Secure (V2801SG), Upto 1000Mbps auto

Buy Netlink GPON ONT 1 GE Secure (V2801SG), Upto 1000Mbps auto Adaptive Ethernet Interface Router (Compatible for All FTTH PON Broadband Connections) online on Amazon.eg at best prices.

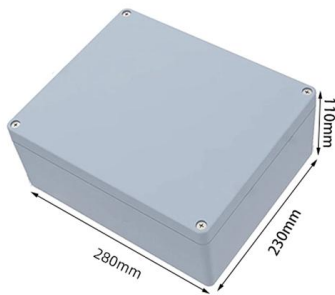
[Contact Us](#)



QSFP28 Transceiver: The Ultimate 100G Optical

Discover ascentoptics about QSFP28 transceiver solutions. Master 100G optical modules with in-depth insights and trusted guidance.

[Contact Us](#)



QSFP28 100GE/OTU4 4WDM-40 13xxnm 40km 18dB

The SO-QSFP28-ER4-OTU4 is a QSFP28 form-factor transceiver for 100Gbps Ethernet and OTN (OT4) applications. It is intended for use in inter- and intra

[Contact Us](#)

100G QSFP28 ER4 LITE TRANSCEIVER

NEXCONEC® QSFP28 ER4 Lite Transceivers are designed for 100G Ethernet 100GBASE-ER4, 4WDM-40 and OTN OTU4 links over duplex single mode fibers, support transmission distance up to

[Contact Us](#)



Contact Us

For datasheets, pricing, or custom fiber access solutions, please visit:
<https://www.frindel.es>