

Drilling holes on the side of the cable tray





Overview

To avoid transverse bending at higher loads, a joint plate must be used for tray widths of 400 mm or more in the joint area of the cable trays that are to be connected. Developed by Interstates, this cable tray cutting guide acts as a guide for a metal cutting circular saw for cutting the side rail of a cable tray as well as a guide for drilling the connecting holes in the cable tray. A rung spacing of 6 to 9 inches (150 to 230 mm) is preferable when the cable tray is used for instrumentation and control applications that require. The most common method of locating the hole positions is to use a splice plate as a template.



Drilling holes on the side of the cable tray

Trunking Cutting Techniques Guide , PDF



The document provides instructions for forming various bends and joints in electrical trunking and cable trays. It describes: 1) How to mark and cut a right-angle

[Contact Us](#)

How to Safely Drill Holes in Walls for Cables: Expert Tips and Safety

Learn expert tips for drilling holes in walls to conceal cables safely and beautifully! Discover the best drill bit size, how to locate studs accurately, and essential safety precautions to

[Contact Us](#)



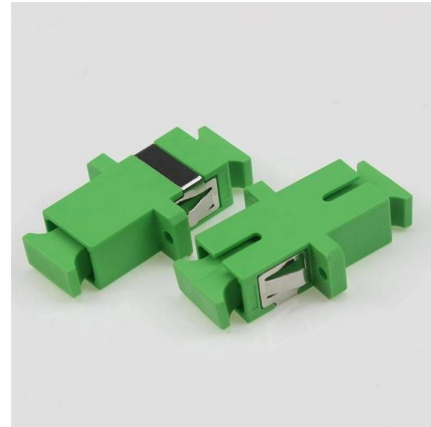
No Drill Under Desk Cable Management Tray, Desk Wire Management Cable

About This Under Desk Cable Management Tray - Use this cable management tray on home/office standing desk and keeps the messy power cords, USB hubs, power strips off the ground, keeps your

[Contact Us](#)

Cable Tray Installation with Rawl Bolts & Drill Machine

Welcome to Engineerings.w! In this video, watch the complete process of installing a cable tray on site -- from climbing the ladder, drilling holes, fixing raw



8 Best Under Desk Cable Management Solutions

Are tangled cables and wires beneath your desk giving you headaches? Solve your cable woes with these nifty under-desk cable organizer

[Contact Us](#)



Used Under Desk Storage Shelf

Under Desk Cable Management Tray No Drill, Metal Mesh Cable Management under Desk with Clamp Mount, 2 Hole Cable Tray with Wire Management and Cord Organizer for Home Office Standing

[Contact Us](#)



Mounting instructions

The number of drill holes is dependent on the height and width of the cable trays.
 Recommendation: For side height 60 mm = 4 screws per connector; for width 300 mm = 3 screws per joint plate.

[Contact Us](#)



Under Desk Cable Tray

No Drilling Installation? Assembling Foellstoe cable management box is a breeze and takes only 3 minutes or less. The side clamps easily grip the edge of your desk, passing through the side holes,

[Contact Us](#)



2Pack Under Desk Cable Management Tray, No Drill Mesh Desk Cable Tray

Ideal for renters or multi-material setups, it leaves no marks and allows effortless. Side-Opening Design & Large Size? The unique side-opening design allows you to easily hide a large number of

[Contact Us](#)

B-Line series Cable Tray Design Considerations

As an industry leader in cable tray, Eaton offers one of the widest ranges of cable management solutions available in the market today with its B-Line series portfolio. With unmatched quality and service, we

[Contact Us](#)



Cable Tray Installation 211215 , PPTX

- The steps for installing cable trays, which include marking, cutting, drilling holes, installing supports, and fixing fittings and accessories. - Common tools used for

[Contact Us](#)



Cable Tray / Trough Tray INSTALLATION

) To install: place 1 part of cover clamp around trough tray cover and tray assembly. Place 2nd part around opposite end of Trough Tray, align clamp holes and install hardware.

[Contact Us](#)



Drilling for Cable

This method also helps you drill holes that are roughly the same height--making cable-pulling much easier. Moreover, when you drill about 1 ft. above a box, you

[Contact Us](#)

How to Safely Drill Wall Holes for Cable Management: A Complete Guide

Learn how to drill holes in your walls for cables the safe way! Our guide covers everything from cable management tips to drilling techniques, ensuring a tidy, secure, and visually

[Contact Us](#)



Used 2026 Under Desk Storage Shelf

Under Desk Cable Management Tray No Drill, Metal Mesh Cable Management under Desk with Clamp Mount, 2 Hole Cable Tray with Wire Management and Cord Organizer for Home Office Standing

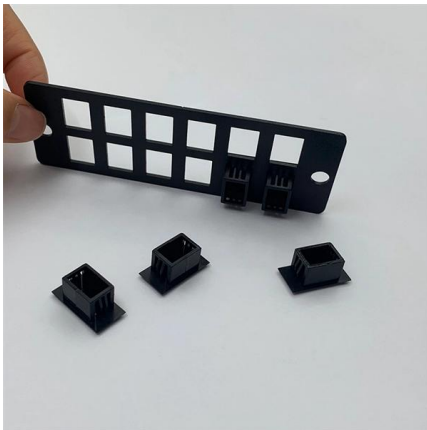
[Contact Us](#)



AshwinD24's gists · GitHub

GitHub Gist: star and fork AshwinD24's gists by creating an account on GitHub.

[Contact Us](#)



5 Steps to Learn How to Install Cable Trays

Installing a cable tray system requires careful planning to ensure it can support the weight of the cables and adheres to electrical safety codes. Here

[Contact Us](#)

Cable Tray Technical Guide A practical guide to product selection and

Cable Tray Technical Guide A practical guide to product selection and installation This guide for engineers and installers has been developed by ABB as a practical reference regarding cable tray

[Contact Us](#)



Cable Tray Installation

Learn everything about cable tray installation with our complete guide. Discover types, steps, and safety tips for efficient electrical cable management.

[Contact Us](#)





Cable Tray Technical Guide A practical guide to product selection and

Reduce the loading When anchoring supports for cable tray, it is extremely important to avoid cutting or drilling into structural building components, such as I-beams, unless approval has been given by the

[Contact Us](#)



The Best Cable Management Trays for Desks in 2024

Are you tired of cable clutter and an unattractive setup? Check out the best cable management trays here.

[Contact Us](#)

The \$300 Office Makeover That Makes Bulky Monitors

Jigsaw and blade (to cut down the central BESTÅ support to allow both monitors to fit side by side)
Drill (to drive hardware and cut cable holes in the

[Contact Us](#)



Cable Tray Cutting Guide

Developed by Interstates, this cable tray cutting guide acts as a guide for a metal cutting circular saw for cutting the side rail of a cable tray as well as a guide for drilling the

[Contact Us](#)



Cable Tray Ladder Trunking Wire Basket Installation

Drilling Holes for splice plates must be drilled in field-cut cable trays. The most common method of locating the hole positions is to use a splice plate as a template.

[Contact Us](#)



Contact Us

For datasheets, pricing, or custom fiber access solutions, please visit:
<https://www.frindel.es>