

# **Does the IPM module require an optocoupler**





## Overview

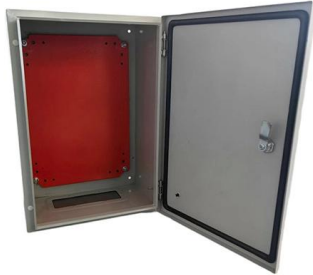
---

Optocouplers can be used to interface between an MCU (microcontroller) and the IPM, to isolate the MCU from the high voltages within the IPM. An IPM (smart, intelligent or integrated power module) combines power IGBTs (insulated gate bipolar transistors) and gate drivers into a single compact package. These optocouplers play a crucial role in ensuring safe, reliable signal transmission between high-voltage power electronics (like IPMs) and low-voltage control circuits, making them indispensable for motor drives, inverters, and a wide range of automation systems.



## Does the IPM module require an optocoupler

---



### Optocouplers Desig

IPM drivers. Type 2 AlGaAs LEDs are mainly used in Avago's optocoupler families that handle high-speed digital signals and low-power 10 Mbit/s digital o -tocouplers. Lastly, the GaAsP LEDs are used

[Contact Us](#)

### G1 Series Intelligent Power Module (IPM) Interface

Application Note - "Introduction to IPMs (Intelligent Power Modules)", Provides detailed information regarding features, operational characteristics, and interface circuit requirements for Intelligent Power



[Contact Us](#)



### The Intelligent Power Module Concept for Motor Drive Inverters

The Intelligent Power Module Concept for Motor Drive Inverters Designers of inverters for small AC motors in consumer and general purpose industrial applications are required to meet increasingly

[Contact Us](#)

### FUJI IGBT V-IPM APPLICATION MANUAL

An IPM (intelligent power module) is an intelligent IGBT module combining a built-in control IC which includes a drive circuit and a protection circuit. The V-IPM (V-series IPM) has the following features:



### CIPOS Mini IPM IM535 series

The scope of this application note is to describe the CIPOSTM Mini intelligent power module (IPM) and the basic requirements for operating the products in a recommended mode.

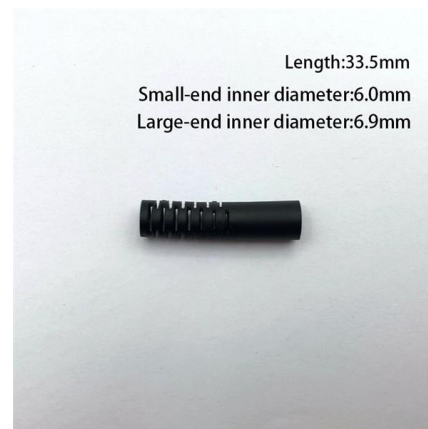
[Contact Us](#)



### ACPL-P480-000E

The ACPL-P480-000E high-CMR, Intelligent Power Module (IPM) and gate drive interface optocoupler serves AC and brushless DC motor drive, switching power

[Contact Us](#)



### CIPOS Micro for IRSM5xx and IM240

Scope and purpose This application note describes the part portfolio of IRSM5xx and IM240 of the product family CIPOSTM Micro Intelligent Power Modules (IPM) and should be used in parallel with

[Contact Us](#)

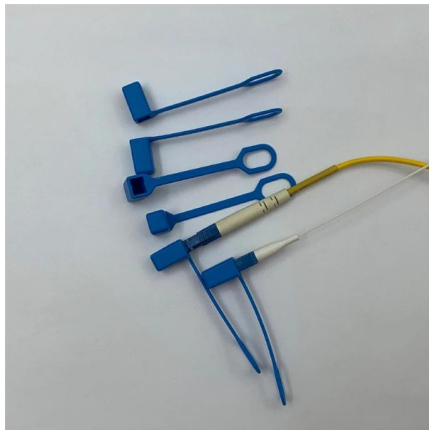




## Thermal Management for Delphi IPM Power Module

The IPM modules are available in either SMD or SIP packages. This application note discuss the thermal management of Delphi IPM series power module which includes the thermal performance

[Contact Us](#)



## Intelligent Power Modules (IPMs): What they are and

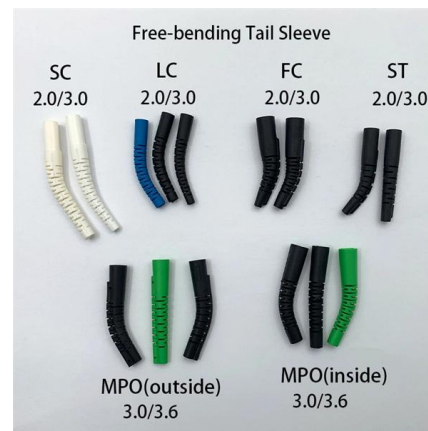
What is an IPM chip or Intelligent Power Module? An IPM chip is basically a highly integrated solid-state power switching module that combines in a single package

[Contact Us](#)

## USING INTELLIGENT POWER MODULES

6.6 Controlling the Intelligent Power Module IPM (Intelligent Power Modules) are easy to operate. The integrated drive and protection circuits require only an isolated power supply and a low level on/off

[Contact Us](#)



## Intelligent Power Module and Gate Drive Interface Optocouplers

To minimize dead time the designer must consider the propa-gation delay characteristics of the optocoupler as well as the charac-teristics of the IPM IGBT gate drive circuit.

[Contact Us](#)

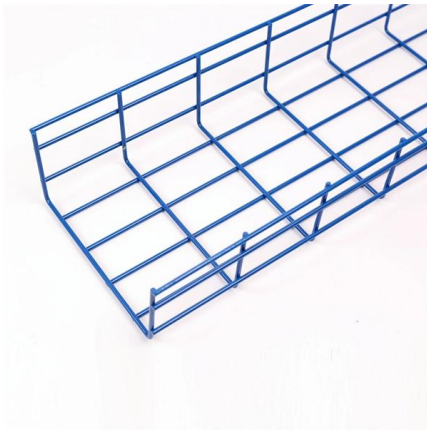




## What is Integrated Program Management (IPM)?

Discover the importance of Integrated Program Management (IPM) for specific, contract-related projects and your firm as a holistic business.

[Contact Us](#)



## 4 Easy Ways to Test Intelligent Power Modules (IPM) in Inverter

Learn the top 4 methods to test Intelligent Power Modules (IPM) in inverter circuits quickly and accurately! This video covers essential IPM testing techniques for diagnosing inverter circuit

[Contact Us](#)

## ORIENT IPM Drive Optocoupler Product Introduction

ORIENT IPM drive optocoupler contains an AlGaAs LED and a photodetector with a built-in Schmidt trigger to provide logically-compatible

[Contact Us](#)



## Intelligent Power Module and Gate Drive Interface Optocouplers

To minimize dead time the designer must consider the propagation delay characteristics of the optocoupler as well as the characteristics of the IPM IGBT gate drive circuit.

[Contact Us](#)



## What Is an IPM Module? The Brain Behind Your Motor's Precision

Discover what is an IPM module--the key to efficient motor control. Learn how it works, where it's used, and why it matters.

[Contact Us](#)



## Broadcom, onsemi, and Aote Semiconductor Drive Next

While onsemi's press release focuses primarily on the IPM side, these advanced modules require equally high-performance optocouplers for

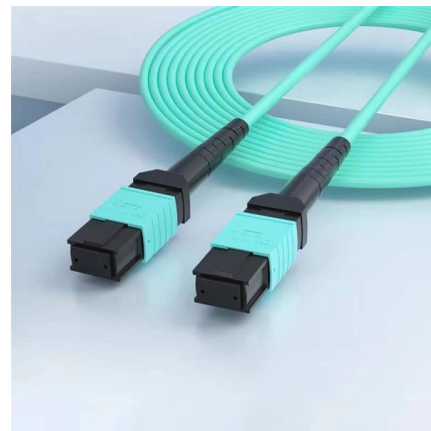
[Contact Us](#)



## 10A 400V DC Intelligent Power Module (IPM)

Summary of 10A 400V DC Intelligent Power Module (IPM) This article details a 10A 400V DC Intelligent Power Module (IPM) board designed for

[Contact Us](#)



## Intelligent Power Modules provide excellent protection for industrial

An Intelligent Power Module (IPM) is an advanced power switch device adapted to the current development trends of power devices - modularity, composite, and power integrated circuits

[Contact Us](#)





## Intelligent Power Module (IPM) Interfaces Optocouplers By Application

These applications require high-speed communication and precise control, which optocouplers effectively deliver by ensuring noise immunity and preventing electromagnetic

[Contact Us](#)



### FOD8480

The FOD8480 and FOD8482 are low power optocouplers, which support isolated interface to Intelligent Power Module (IPM) communicating digital control signals from the controller to the IPM, without

[Contact Us](#)

### Application Note 5401

Application Note 5401 Introduction An IPM (smart, intelligent or integrated power module) combines power IGBTs (insulated gate bipolar transistors) and gate drivers into a single compact package.

[Contact Us](#)



### ACNU-4804: Positive Logic High CMR Intelligent Power Module (IPM)

Description The Broadcom® ACNU-4804 is a single-channel fast-speed optocoupler in SSO8 footprint. It contains a AlGaAs LED and photo detector with built-in Schmitt trigger to provide logic compatible

[Contact Us](#)



### ACNU-4804: Positive Logic High CMR Intelligent Power Module (IPM)

The ACNU-4804 is suitable for IPM interface isolation, AC and brushless DC motor drives, industrial inverters and space-constrained industrial applications.

[Contact Us](#)



### IPM: what they are, how they work, what they are used for

Types or families The families of these IPM modules Commercials can sometimes be divided according to characteristics, such as: Compact: They are highly

[Contact Us](#)

### Guidelines for reading an optocoupler datasheet

As an isolator, an optocoupler can prevent high voltages from affecting the side of the circuit receiving the signal. Transferring signals over a light barrier by using an infrared light-emitting diode and a light

[Contact Us](#)



### The Intelligent Power Module Concept for Motor Drive

Building on the success of its Intelligent Power Module (IPM) approach, Mitsubishi Electric pioneered the DIIPM(TM) concept in 1997 based on

[Contact Us](#)



## CIPOS Mini IPM IM535 series

Scope and purpose The scope of this application note is to describe the CIPOSTM Mini intelligent power module (IPM) and the basic requirements for operating the products in a recommended mode. This

[Contact Us](#)



## Contact Us

---

For datasheets, pricing, or custom fiber access solutions, please visit:  
<https://www.frindel.es>