

Distribution box grounding device model and specifications





Distribution box grounding device model and specifications



Grounding Practices in Power Distribution Systems

It is absolutely necessary to implement efficient grounding in distribution systems in order to guarantee the safety, dependability, and performance of the electrical

[Contact Us](#)

The Ultimate Guide to Protective Grounding Boxes

Learn about the benefits, types, and importance of protective grounding boxes in ensuring electrical safety and preventing hazards.

[Contact Us](#)



Protective grounding requirements for transmission and distribution

Introduction to protective grounding This technical article covers protective grounding requirements for steel tower and wood

[Contact Us](#)

PRODUCT & SOLUTION CATALOG

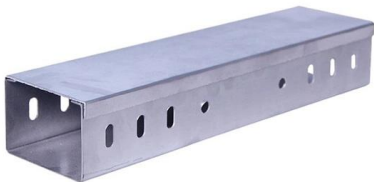
A complete collection of watertight devices for demanding industrial environments including connectors, inlets, outlets, covers and rugged FD boxes that allows mounting of single-gang devices in multi



System Grounding

Abstract: System grounding considerations affect many aspects of an electrical system. Knowledge of the various types of system grounding and performance characteristics is critical when designing or

[Contact Us](#)



Appendix D Equipment Grounding Specifications

Grounding Specifications for an Equipment Room
The grounding resistance of a comprehensive communication building should be less than or equal to one ohm. The grounding resistance of an

[Contact Us](#)



GROUNDING OF UTILITY AND INDUSTRIAL DISTRIBUTION

Essentially this workshop is broken down into system grounding, protective grounding and surge/noise protection of power and electronics systems normally found in distribution networks.

[Contact Us](#)

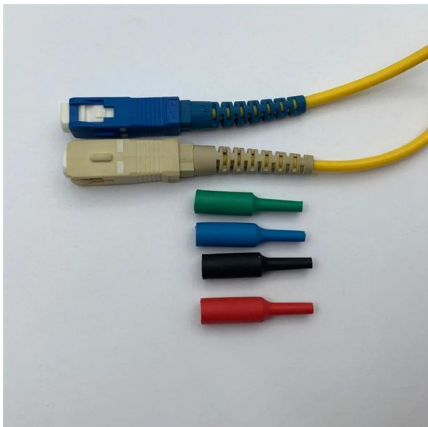




Nine Recommended Practices for Grounding

Use equipment grounding conductors sized equal to the phase conductors to decrease circuit impedance and improve the clearing time of

[Contact Us](#)



26 05 26 Grounding and Bonding Electrical Systems_06_15_16

Summary This section contains design criteria for the grounding of building services and separately-derived systems under 600 volts. "Building service" can refer to utility services or services originating

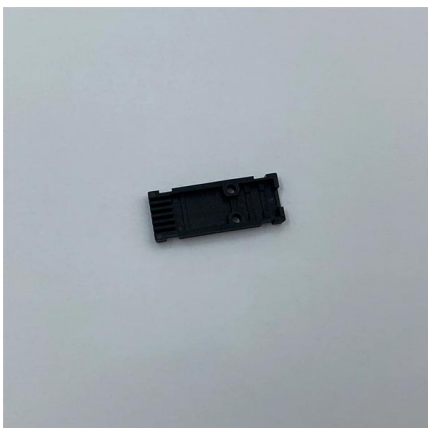
[Contact Us](#)

Section 26 05 26 Grounding and Bonding for Electrical Systems

This specification is intended to be used in concert with related VA Standard Details. The A/E shall include details on the drawings, and edit details as necessary to comply with project scope and latest



[Contact Us](#)



High Resistance Grounding (HRG) medium-voltage design guide

Where continuity of service is a high priority, high resistance grounding can add the safety of a grounded system while minimizing the risk of service interruptions due to grounds. The concept is a simple

[Contact Us](#)



High Resistance Grounding (HRG) medium-voltage design guide

The C-HRG is used to protect an electrical distribution system from damaging transient over voltages caused by ground faults. It also provides a means to locate the ground fault, therefore extending the

[Contact Us](#)



Microsoft Word

Equipment - The term equipment as used in this Project Standard and Specification applies to all electrical distribution, control and utilization components and includes such as transformers, panel

[Contact Us](#)

Grounding system construction: key points for grounding distribution

Think of it this way: That distribution box in your facility? It's not just a metal container - it's the quarterback coordinating all electrical flows. If its grounding fails, every connected device

[Contact Us](#)



The Basics of Substation Grounding: Parts of the

The radial system consists of one or more grounding electrodes with connections to each device in the substation. It is the most economical, but the

[Contact Us](#)



Distribution box with standard cable (for up to 4)

With this convenient distribution box with a standard pin cable you can connect up to 4 grounding products with a grounded wall socket or a grounded extension cord



[Contact Us](#)



26 05 26 GROUNDING AND BONDING FOR ELECTRICAL SYSTEMS

GROUNDING AND BONDING FOR ELECTRICAL SYSTEMS PART 1 - GENERAL 1.1 Work includes grounding and bonding of system neutral, equipment and conduit systems to conform

[Contact Us](#)

High-Resistance Grounding Design for Industrial Facilities

To implement HRG, a resistor is installed between the system neutral and system ground. An alarm is raised upon the occurrence of a ground fault. Phase-to-ground voltage is used to identify the faulty



[Contact Us](#)

PRODUCT & SOLUTION CATALOG

Leviton's Wetguard® Products are the Most Versatile and Well-Engineered Watertight Wiring Devices on the Market. A complete collection of watertight devices for demanding industrial environments

[Contact Us](#)





How to Design System Grounding in Low Voltage Electrical Systems

Locating the first fault for repairs is simplified with the application of a Ground Fault Location Device (GFLD). Predictive maintenance, based on the monitoring of changes in insulation impedance, is

[Contact Us](#)



Grounds for Grounding: A Handbook from Circuits to Systems:

Ground Reference Structure Zoned Grounds Primary Power Distribution Scheme System-Wide Power Distribution Schemes Grounding in Interconnecting Assemblies Fundamental Grounding Schemes

[Contact Us](#)

The Direct Grounding Box: Importance and Applications

Common Applications of Direct Grounding Boxes Direct grounding boxes are commonly used in industrial settings, telecommunications, power distribution systems, and residential buildings.

[Contact Us](#)



System Grounding

Knowledge of the various types of system grounding and performance characteristics is critical when designing or operating an electrical system. The voltage, system arrangement, loads connected, and

[Contact Us](#)





Grounding Systems Design & Application

This Electrical Engineering training course on Grounding Systems Design & Application focuses on the concepts of grounding as applies to utility networks, industrial plant distribution systems and their

[Contact Us](#)



Distribution System Grounding

Good equipment grounding ensures personnel safety. Neutral grounding, the system frequency and soil resistivity impact modeling of the distribution system components.

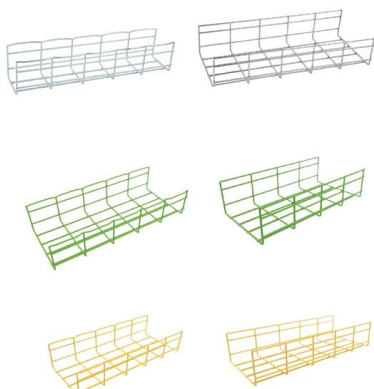
[Contact Us](#)



FDC222-TB , Cast device box , T& B Rigid Fittings , Cable Protection

Act as pull boxes for conductors in a threaded rigid conduit system, including an internal ground screw. Provide openings to make splices and taps in conductors.

[Contact Us](#)



Appendix D Equipment Grounding Specifications

Table 3-586 shows the general grounding specifications. The working ground and protective ground, including the shielded ground and the lightning-proof ground of the cable distribution frame should

[Contact Us](#)



Distribution Box - Astryd Power Pvt. Ltd.

Distribution Box Distribution Box A distribution box is an essential component in electrical systems, serving as the central point for distributing electricity to various circuits, appliances, and devices

[Contact Us](#)



Design Standards for Distribution Equipment Earthing

This network standard outlines Ausgrid's design, construction, testing and commissioning requirements for distribution equipment earthing systems and should be considered in conjunction with other

[Contact Us](#)

Contact Us

For datasheets, pricing, or custom fiber access solutions, please visit:
<https://www.frindel.es>