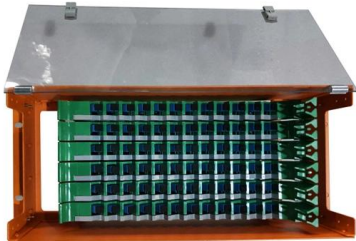


Distribution box 485 line





Distribution box 485 line



RS485 Modbus Installation Guide

Dividing the installation into small panels with their own RS485 line improves stability and facilitates maintenance. With Ibercomp's Ethernet-RS485

[Contact Us](#)

The RS-485 Design Guide (Rev. D)

Data transmission lines should always be terminated and stubs should be as short as possible to avoid signal reflections on the line. Proper termination requires the matching of the terminating resistors,

[Contact Us](#)



RS-485 Power Over Bus

This reference design uses a bias-tee structure in order to combine power and data. High-frequency data (in this case from an RS-485 transceiver) is connected to the distribution line through a series

[Contact Us](#)

The Secrets of RS-485 Half-duplex Communication

RS-485 is a good choice for long distance serial communication since using differential transmission cancels out the vast majority of electromagnetic disturbances picked up by the signal. A simple RS



Demystifying RS485 Connector Wiring: A Complete Guide

Learn how to properly wire an RS485 connector for your communication needs. Find step-by-step instructions and diagrams for easy installation.

[Contact Us](#)



The RS-485 Design Guide (Rev. D)

The RS-485 bus is a distributed parameter circuit whose electrical characteristics are primarily defined by the distributed inductance and capacitance along the physical media, which includes the

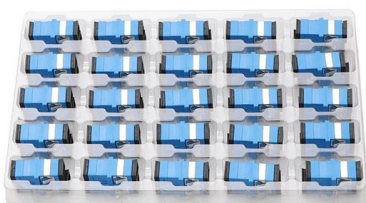
[Contact Us](#)



FTTH distribution boxes 4, 8, 16, 24, 36 or 48 ports

Premium-Line FTTH distribution box is aim designed for multi-purpose applications in FTTH projects. Read more here!

[Contact Us](#)





Understanding RS 485 Wiring: A Comprehensive Diagram

Learn how to wire RS-485 communication network with this detailed diagram. Understand the connections and signals for reliable data transmission.

[Contact Us](#)



RS-485 Distribution Box

RS-485 Distribution Box FAST AND EFFECTIVE SOLUTION FOR RS-485 NETWORKING Simple wall mounting 7 holes to feed the cables through Termistor, connectable via jumper

[Contact Us](#)

RS-485 Termination Box PCD7.T16x , Honeywell

With their robust and compact construction and electrically isolated power supply with either 230 VAC or 24 VAC/DC, the PCD7.T16x termination boxes are

[Contact Us](#)



RS-485 Basics: the RS-485 Driver

Many common RS-485 questions can be resolved with a basic understanding of the structure and operation of the driver and receiver. In this post, I'll discuss the RS-485 driver and the relevant

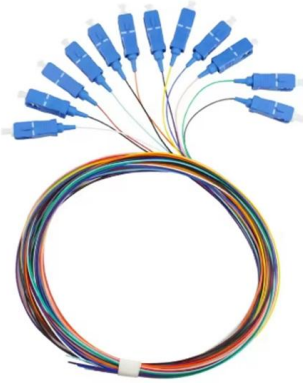
[Contact Us](#)



RS-485 Basics Series

Additionally, RS-485 allows for communication over greater distances than multipoint low-voltage differential signaling (M-LVDS) because of its larger signaling levels and wider common-mode range.

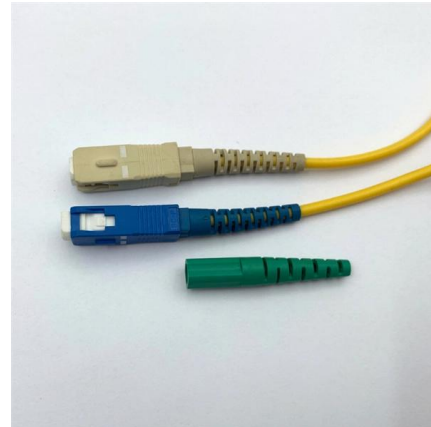
[Contact Us](#)



RS-485 Wiring Guide: Best Practices, Installation Steps, and Common

Learn RS-485 wiring best practices with our complete installation guide. Discover tips, diagrams, and common mistakes to ensure reliable network performance.

[Contact Us](#)



Functional Principles of the Driver and Receiver in RS-485 Networks

RS-485 is a well-known communication standard that is effective for long-distance data transmission and environments with substantial electrical noise. This tutorial provides a clear and

[Contact Us](#)



Understanding RS 485 Wiring: A Comprehensive Diagram

Wiring RS-485 in a Daisy Chain Topology RS-485 is a popular communication standard used for connecting multiple devices in a network. When wiring RS-485

[Contact Us](#)



Wiring of RS485 Communications Networks , Schneider

This document attempts to explain correct methods of wiring RS485 communication networks in industrial environments based on various application notes and

[Contact Us](#)



The Ultimate Guide to RS485 Wiring Connection:

Termination is another crucial aspect of RS485 wiring connection. Termination involves adding resistors at the ends of the transmission lines to prevent signal

[Contact Us](#)

RS-485 Termination Box PCD7.T16x , Honeywell

RS-485 Termination Box PCD7.T16x PCD7 Termination Boxes are an electrically isolated supply provides bias voltage at the necessary off-load potential for signal

[Contact Us](#)



RS485 Standard: Wiring, Modbus, Ethernet, IC Guide

RS485 guide: basics, wiring methods, cable types, Modbus vs Ethernet, IC transceivers, applications, troubleshooting, and BOM support.

[Contact Us](#)



RS485 Interface Schematic Detailed Diagrams

Compared with the traditional RS232 interface, RS485 not only supports communication distances of up to 1200 meters, but also allows a single

[Contact Us](#)



Guidelines for Proper Wiring of an RS-485 (TIA/EIA-485)

Our RS-485 Cable Specification Guide will explain cable types, noise rejection, and termination resistor locations. Learn how Maxim Integrated can help.

[Contact Us](#)

RS-485 Design Guide Application Note

RS-485 is a communication standard for transmitting and receiving data over long distances between devices. It uses a balanced pair of wires to send signals and can communicate at

[Contact Us](#)



Wiring of RS485 Communications Networks

Issue This document attempts to explain correct methods of wiring RS485 communication networks in industrial environments based on various application notes and technical

[Contact Us](#)



RS-485

RS-485, also known as TIA-485 (-A) or EIA-485, is a standard, originally introduced in 1983, defining the electrical characteristics of drivers and receivers for use in serial communications systems.

[Contact Us](#)



RS-485 Basics: Introduction

RS-485, formally known as American National Standards Institute (ANSI) Telecommunications Industry Association (TIA)/Electronic Industries Alliance (EIA)-485-A, is a balanced data transmission

[Contact Us](#)

RS-485 Power Over Bus

High-frequency data (in this case from an RS-485 transceiver) is connected to the distribution line through a series capacitor, which allows data to pass through while protecting the transceiver from

[Contact Us](#)



Contact Us

For datasheets, pricing, or custom fiber access solutions, please visit:
<https://www.frindel.es>