

# Dimensions of the cold aisle for oil pipeline monitoring room





## Overview

---

According to the ANSI/TIA/EIA-942-A standard, the recommended width for a cold aisle is 1,2 meters, which typically corresponds to the size of two double floor tiles. Cold air is supplied via perforated tiles at the front of the cabinets, which is distributed to cabinet by fans. Efficient airflow management in data centers relies heavily on proper Hot Aisle and Cold Aisle configurations. When implemented correctly, they improve efficiency, reduce energy consumption, extend equipment life, and enhance overall reliability. What is Cooling Optimization?

Why is Cooling Optimization Important?

"You can't purchase efficiency.



## Dimensions of the cold aisle for oil pipeline monitoring room

---



### Hot and Cold Aisle Containment in Data Centers

Data centers are often made up of hot and cold aisles, and the design of the hot / cold aisle data center is far from new. However, the traditional setup

[Contact Us](#)

### A Guide to Hot and Cold Aisle Containment for Optimizing Server Room

Training and Awareness The hot and cold aisle strategy is a proven method for improving cooling efficiency and reducing energy consumption in data centers. By carefully planning the layout of

[Contact Us](#)



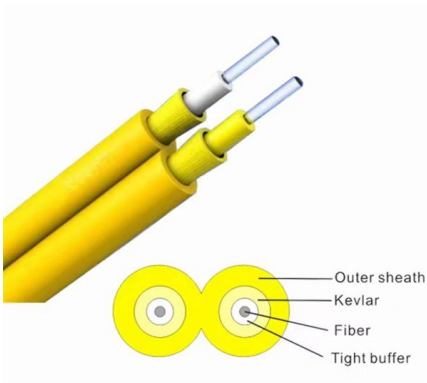
### What are hot and cold aisles in the data center?

It also recommends implementing hot and cold aisles with

[Contact Us](#)

### Data Center Hot Aisle/Cold Aisle Layout Design

Data Center Hot Aisle/Cold Aisle Layout Design  
Looking for ways to keep your Data Center Server Room cool? Consider the hot aisle/cold aisle



### **Aisle Containment Systems for Hot & Cold Aisle Solutions**

Cool Shield Aisle containment solutions reduces server row temperatures in active data centers. Learn more about the benefits of hot and cold containment.

[Contact Us](#)

### **Cold Aisle Containment , Legrand**

By maintaining consistent, predictable temperatures, cold aisle containment minimizes thermal stress and reduces the risk of overheating, improving reliability and extending equipment lifespans.

[Contact Us](#)



### **Cold and Hot Aisle Configurations**

Company Overview: Great Lakes Case & Cabinet is a woman-owned, ISO 9001:2008 registered business headquartered in Edinboro, Pennsylvania. Great Lakes is a leading manufacturer of high

[Contact Us](#)





## Cooling

According to the ANSI/TIA/EIA-942-A standard, the recommended width for a cold aisle is 1,2 meters, which typically corresponds to the size of two double floor

[Contact Us](#)



### Pipeline Flow Monitoring for Control Room Operators

Optimize pipeline flow meter monitoring and BI insights for control room operators in pipeline transportation.

[Contact Us](#)

### Hot Aisle vs Cold Aisle Containment Explained (Data Center Cooling)

In this guide, we'll break down how hot aisle and cold aisle configurations work, what containment systems do, and why airflow management is critical in today's high-density data centers.

[Contact Us](#)



### Hot and Cold Aisle Containment: What You Need to

Aisle containment is a physical means of separating hot (exhaust) and cold (supply) air. It can be accomplished via thoughtful room design, cabinet

[Contact Us](#)



## Hot and cold aisle cooling containment

Hot and cold aisle cooling containment More frequently, data centers are using hot and/or cold aisle cooling containment solutions to help with managing airflow, eliminating hot spots and improving

[Contact Us](#)



## Aisle Containment Systems Physical Containment Systems

Door Options A choice of door options is available for use with the aisle containment system to provide the right combination of safety and security. Dual sliding doors or Vertical doors can be chosen for

[Contact Us](#)

## Cold Aisle Containment: The Ultimate Guide To

Additionally, cold aisle containment tends to be easier to implement compared to hot aisle containment, as it typically requires fewer modifications to the existing

[Contact Us](#)



## FOCUSED COOLING USING COLD AISLE CONTAINMENT

While either hot aisle or cold aisle containment systems can be installed and are both capable of increasing efficiency and cooling today's high heat data centers, meaningful differences exist in how

[Contact Us](#)



## Hot Aisle vs Cold Aisle Containment Explained (Data Center Cooling)

Hot aisle and cold aisle containment are foundational concepts in data center design. When implemented correctly, they improve efficiency, reduce energy consumption, extend

[Contact Us](#)



## Temperature Sensor Location

However, any departure from optimum airflow management, whether that be poor design intent or temporarily disabled separation during moves-adds

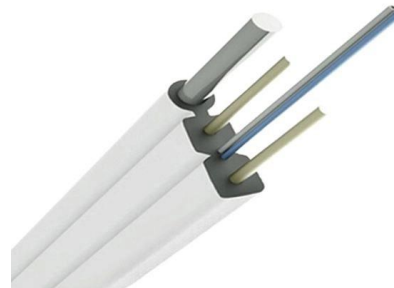
[Contact Us](#)



## Data Center Containment Best Practices: Key Considerations to

Cold aisle containment doesn't absolutely need to be on a raised floor, but it typically is because of challenges associated with delivering supply air to the contained space(s)

[Contact Us](#)



## A DEEP DIVE INTO THE WORLD OF HOT & COLD AISLE

AISLE CONTAINMENT Aisle containment is a crucial strategy in data center management. It involves the use of physical barriers or enclosures at the end of server aisles to separate hot and cold

[Contact Us](#)



## Control Room Layouts for Oil & Gas by PWS

Discover innovative control room layout designs from leading manufacturers. Enhance productivity and safety with customized, high

[Contact Us](#)



## Hot Aisle vs. Cold Aisle Containment for Data Centers

Hot Aisle Containment vs. Cold Aisle Containment The goal of hot and cold aisle containment is very similar, even if they are entirely different

[Contact Us](#)

## A DEEP DIVE INTO THE WORLD OF HOT & COLD AISLE

OPERATIONAL ASPECTS OF HOT AND COLD AISLE CONTAINMENT ZONES Airflow Management: Utilize perforated tiles, grates, or directional vents to guide cold air to the server inlets and direct hot

[Contact Us](#)



## Data Center Temperature: Hot And Cold Aisle Containment

Hot and cold aisle containment systems are crucial for data center temperature. Click to learn about airflow, cooling efficiency, and thermal

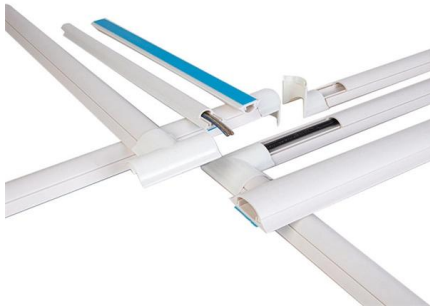
[Contact Us](#)



## IMPROVING DATA CENTER EFFICIENCY AND CAPACITY WITH AISLE

Recently the concept of aisle containment began to take hold as a viable tool to help address these challenges. Aisle containment works to increase the efficiency and capacity of a data center by

[Contact Us](#)



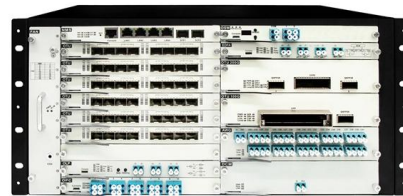
## Monitoring hot and cold aisle containment in datacenters using a

A datacenter facility required a highly reliable method for monitoring very low differential air pressures to maintain the effectiveness of its hot/cold aisle containment system and prevent contaminant ingress.

[Contact Us](#)

## Cold Aisle Containment & Hot Aisle Containment

Executive Summary of Aisle Containment This article examines cold aisle containment and hot aisle containment (also known as cold or hot air containment) from a neutral perspective. Cross-Guard, as



[Contact Us](#)



## Hot vs. Cold H

Hot aisle or cold aisle containment is a layout design for server racks and other computing data center. The aisle/cold aisle containment configuration is to conserve energy and lower cooling costs by

[Contact Us](#)

## Hot and cold aisle cooling containment



Below are general guidelines for assessing the installation of a 3932 in a hot or cold aisle cooling containment solution. Partitions used in the aisle cooling containment solution should be self

[Contact Us](#)



## Contact Us

---

For datasheets, pricing, or custom fiber access solutions, please visit:  
<https://www.frindel.es>