

Dimensions of Recessed Lighting Distribution Box





Dimensions of Recessed Lighting Distribution Box



Recessed Lighting Layout Rules: Spacing, Placement

You'll learn the critical measurements that determine fixture placement, the patterns that create balanced light distribution, and the common errors that

[Contact Us](#)

Distribution Boards & Consumer Units

Clear detailed description of each size and easy to select with the ordering codes. Box with four studs and adjustable nuts for easy fit / easy remove of pan assembly. Generous wiring space. Easy fit of

[Contact Us](#)



Guide to Designing the Best Recessed Lighting Layout

Learn how to design the best recessed lighting layout for your home with expert tips on placement, spacing, and lighting styles to enhance every

[Contact Us](#)



Sizes, Types, and Ratings

Types of Recessed Light Fixtures Standard Line Voltage (120V) - The most common type used for general and task lighting. They do not use a transformer, ballast, or

[Contact Us](#)



Light Box Data sheet

Lightbox dimensions are custom specified. To begin, select from 4 possible depth/heights: Then specify width and overall length. Seamless fabric diffusers can up to 5' wide and 50' long. Larger sizes are

[Contact Us](#)



Recessed Lighting Calculator -- How Many Lights Do I

Enter room dimensions, get an instant lighting layout with exact spacing and placement. Works for kitchens, living rooms, and vaulted ceilings.

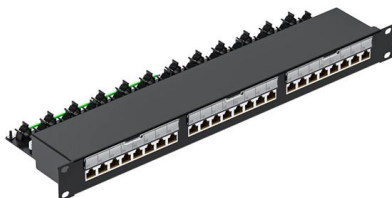
[Contact Us](#)



How to Design Your Recessed Lighting Layout

Recessed lights are ideal for focusing soft light on small areas or for lighting a whole room, and can be used for any design purpose -- business utility, aesthetics, or ambiance. Of course, as with any type

[Contact Us](#)





Recessed Lighting Sizes: A Guide to Choosing the Right

Confused about recessed lighting sizes? Learn how to choose the right size for your space, from standard 4-inch to 6-inch lights, plus LED options.

[Contact Us](#)



Lighting Distribution Panel

Lighting Distribution Panel Lighting Panel (LP) sub-distribution boards offer the right low voltage (LV) solution for large buildings by dividing the electrical power feed

[Contact Us](#)

Recessed Lighting Calculator

Our calculator uses industry-standard spacing formulas based on ceiling height, beam angle, and room dimensions to provide professional-grade layout

[Contact Us](#)



2026 NEC Electrical Junction Box Sizes Guide:

Choosing the right electrical junction box size is crucial for safety and code compliance in your US projects. This guide helps you determine the correct

[Contact Us](#)



Free Recessed Lighting Calculator

Just select the layout, enter the room's dimensions, and hit calculate. You can also use the calculator to determine the placement for recessed task lighting above a

[Contact Us](#)



Recessed Lighting Calculator: Perfect Layout & Spacing

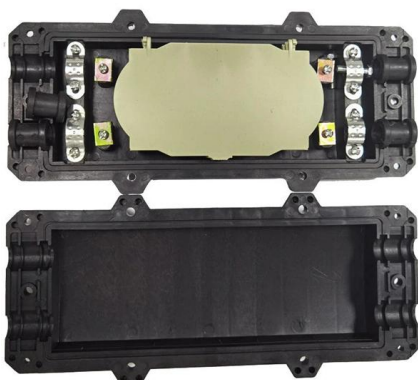
Calculate the optimal recessed lighting layout by entering your room dimensions and lighting requirements below. This calculator helps determine the correct number of lights, spacing between

[Contact Us](#)

How to Measure Recessed Light Fixtures for Replacements

Learn how to measure recessed light fixtures for replacements in this guide from LED Light Expert. Find out how to get accurate measurements, understand housing sizes, and choose the

[Contact Us](#)



An Architect's Guide To: Recessed Lighting

From selecting the fixture to aiming it on-site, recessed lighting is a subtle and complicated aspect of design for architects to perfect.

[Contact Us](#)



Free Recessed Lighting Calculator

Use the recessed lighting calculator on this page to calculate the placement and spacing for general lighting in a room. Just select the layout, enter the room's

[Contact Us](#)



Distribution Box

Plastic Electrical Box, also known as a consumer control unit or electricity control unit. It is a device that is a type of distribution board that helps in protecting

[Contact Us](#)

A Comprehensive Guide to Recessed Lighting: Sizes,

Discover the perfect recessed lighting for every room in your home. Our guide covers sizes, types, and expert tips for a flawless installation.

[Contact Us](#)



Recessed Lighting Calculator

Use Field Service HQ's Recessed Lighting Calculator to visualize perfect ceiling light placement. Input room size and fixture distance to calculate ideal quantity for

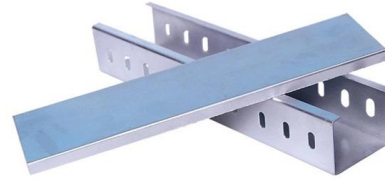
[Contact Us](#)



flex7 Lighting Distribution Boxes

Externally, its tough anodised aluminium body makes our lighting distribution box one of the most robust on the market.

[Contact Us](#)



Planning Recessed Lighting: Spacing, Beam Angles

Learn how to planning recessed lighting layouts using proper spacing, beam angles, ceiling height, and lighting design best practices.

[Contact Us](#)

Recessed Lighting Calculator - Northerncult

A recessed lighting calculator is a tool designed to help you determine the number of recessed lights needed for a specific area. By inputting various

[Contact Us](#)



What Size Box Do I Need For Residential Interior Lighting

To calculate the required box size, use a chart and add up the numbers for the required dimensions. The most commonly used box for junctions

[Contact Us](#)

Recessed Lighting Calculator - Ceiling Light



Spacing Tool

Free recessed lighting calculator for downlight spacing, wall offsets, ceiling grid layout, and rough lux/foot-candle estimates based on room size, mounting height,

[Contact Us](#)



Contact Us

For datasheets, pricing, or custom fiber access solutions, please visit:
<https://www.frindel.es>