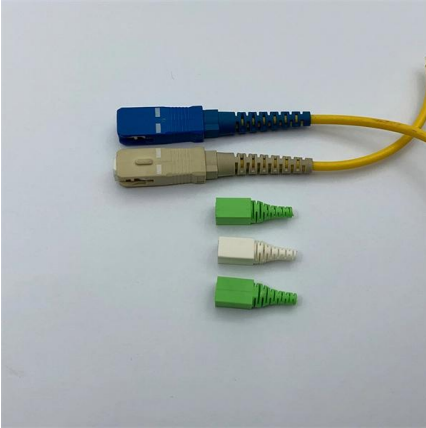


Customization Requirements for Long-Span Cable Trays





Customization Requirements for Long-Span Cable Trays



Guide to cable support systems

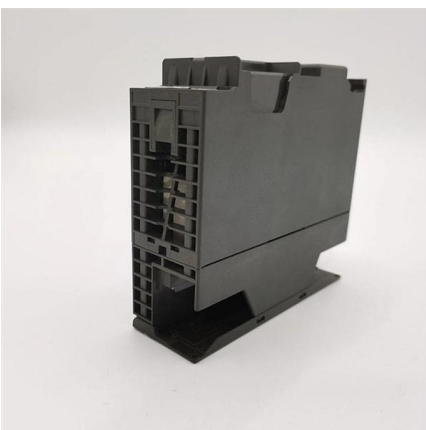
Four different mesh cable tray types are available, depending on the requirements, area of application and cable quantity. The innovative Magic connection system of the GRM and G-GRM mesh cable

[Contact Us](#)

Cable Tray Dimensions Guide: Standard Sizes, Tray

Explore standard sizes by tray type, understand width and depth limits, and see how to calculate and choose compliant cable tray sizes for real projects.

[Contact Us](#)



Wire Mesh Cable Trays Technical Information Detailed,

Wire Mesh Cable Tray Installation Notice: Bends, Risers, T Junctions, Crosses and Reducers can be made from wire mesh cable tray straight sections flexibly in

[Contact Us](#)

GUIDE CABLE TRAYS TECHNICAL

Specifies requirements for metal cable trays and associated fittings designed for use in accordance with the rules of Canadian Electrical Code, Part I and the National Electrical Code®

[Contact Us](#)



CABLE TRAY SYSTEMS GUIDE

The design and cost of the cable tray is greatly affected by this designation. In order to determine the most appropriate and economical system, a class should be selected that reflects the actual total

[Contact Us](#)



PRODUCT BROCHURE T& B® Cable Tray Specialty aluminum solutions

These complete, custom cable tray systems reduce the costly and labor-intensive modifications required to assemble standard cable tray straight sections, splice plates and accessories to fit your tank or

[Contact Us](#)



B-Line series Cable Tray Design Considerations

Cable tray must be capable of supporting not just the weight of the cable, but also the weight of any equipment or materials attached to the cable tray. Additionally, dynamic environmental elements

[Contact Us](#)





Cable Tray Technical Guide A practical guide to product selection and

Cable Tray Technical Guide A practical guide to product selection and installation This guide for engineers and installers has been developed by ABB as a practical reference regarding cable tray



[Contact Us](#)



NEMA and NEC Regulations for Cable Tray Requirements

Follow installation practices to meet cable tray requirements, ensuring proper support, routing, and compliance with safety regulations.

[Contact Us](#)

What Are Long Span Cable Trays

What are long span cable trays? Learn how they reduce support points, save costs & suit stadiums, factories. UK expert guide with FAQs.

[Contact Us](#)



CABLE TRAY SYSTEMS GUIDE

Some applications may require the cable tray to support the weight of a single, dead object in addition to the cable loads. Specifications typically require this to be applied at the midpoint of the span between

[Contact Us](#)



How to Calculate Cable Tray Span for Your Project

It influences how the tray can accommodate varying loads, including different cable types and weights. Understanding the specific span requirements for various tray materials (such as steel,

[Contact Us](#)



Best Practice Guide to Cable Ladder and Cable Tray Systems

This guide covers cable ladder systems, cable tray systems, channel support systems and associated supports intended for the support and accommodation of cables and possibly other electrical

[Contact Us](#)

LEGRAND CABLE TRAYS TECHNICAL GUIDE

Specifies requirements for metal cable trays and associated fittings designed for use in accordance with the rules of Canadian Electrical Code, Part I and the National Electrical Code®

[Contact Us](#)



B-Line series Cable Tray Design Considerations

As an industry leader in cable tray, Eaton offers one of the widest ranges of cable management solutions available in the market today with its B-Line series portfolio. With unmatched quality and service, we

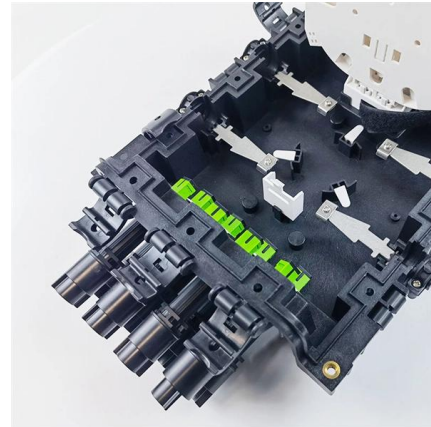
[Contact Us](#)

Long Span Cable Tray



Long Span Cable Tray The long span cable tray is suitable for long support spans and high cable load capacity, and conforms to the load/span design specified in IEC 61537. The long

[Contact Us](#)



B-Line Cable Tray Design Guide

This document provides guidance on designing cable tray systems for commercial and industrial applications. It discusses key factors to consider such as cable tray

[Contact Us](#)

Cable Tray Systems: Requirements and Best Practices

Comprehensive guide to cable tray systems requirements: tray types, materials, loading, supports, bonding, routing, and best practices for safe electrical cable management.

[Contact Us](#)



Cable Tray Selection Process

The standard classes of cable trays, as related to their maximum design loads and to the associated design support spacing based on a simple beam span requirement, shall be designated in

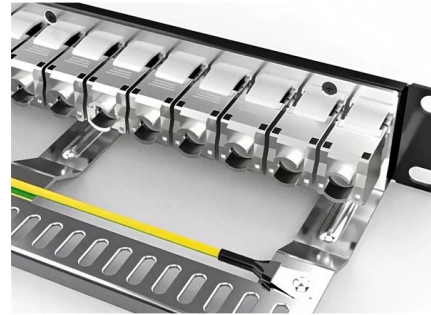
[Contact Us](#)



B-Line Cable Tray Design Guide

This document provides guidance on designing cable tray systems for commercial and industrial applications. It discusses key factors to consider such as cable tray

[Contact Us](#)



Desk Accessories Market Report: Size, Growth, Trends

Desk accessories such as organizers, trays, and cable management products help reduce clutter and support day-to-day task flow. Corporate workspace guidelines

[Contact Us](#)

Cable Tray Support Spacing: Key Guidelines Explained

Explore the essential cable tray support spacing requirements for safe and efficient installations. Learn NEC guidelines for perforated, ladder, and wire

[Contact Us](#)



An In-depth Analysis for Optimal Cable Tray Support Span

The constructability for the longer span obtained from finite element analysis has been validated in view of manual handling of the cable tray.

[Contact Us](#)



PRODUCT BROCHURE T& B® Cable Tray Specialty aluminum solutions

For cable tray applications lacking sufficient space for the number of supports required for standard-length sections, choose T& B Cable Tray long-span AH1-8 series aluminum cable tray in 40-foot (12.2

[Contact Us](#)



construction long span cable tray: Durable & Customizable

Looking for construction long span cable tray with heavy load capacity? Explore customizable, corrosion-resistant options from verified suppliers. Click to find the best industrial

[Contact Us](#)

Cable Tray Technical Guide A practical guide to product selection and

This guide for engineers and installers has been developed by ABB as a practical reference regarding cable tray characteristics, installation, and requirements.

[Contact Us](#)



Cable Tray Design and Standards Guide

1. The document outlines codes and standards that must be followed for design and construction of cable trays and their components. Standards listed include those

[Contact Us](#)

TECHNICAL AND SIZING DATA



Conversely if spans are too long, the tray cost is too high. The optimum span, which varies according to the tray type, the type of support method and labour rates (field vs. shop) can be determined by

[Contact Us](#)



Long-Span Ladder Cable Tray System

The long-span cable tray adopts the structure of a strengthened side plate, which greatly increases the load capacity of the bridge. The product is suitable for the

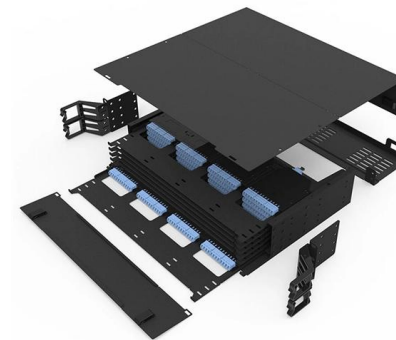
[Contact Us](#)



Cable Tray Size and Dimensions: How to Choose the

Learn how to calculate the perfect cable tray size and dimensions for your electrical project. This guide covers load capacity, fill ratios, and industry

[Contact Us](#)



Contact Us

For datasheets, pricing, or custom fiber access solutions, please visit:
<https://www.frindel.es>