

Crossing via cable tray method





Crossing via cable tray method



Complete cable tray manual for electrical engineers and

Complete cable tray manual for electrical engineers and designers (on photo: power cable management ladder tray systems assembled aluminum cable tray ladder)

[Contact Us](#)

Best Practices for Installing Cables in Trays

Learn the best practices for installing cables in trays. This guide covers essential steps, technical requirements, and key details for efficient cable

[Contact Us](#)



Cable Tray Bridge Construction Method

This document outlines the method statement for building a cable tray river crossing for a solar power plant in Gorontalo. It involves installing pile foundations using a

[Contact Us](#)

Technical Guidelines for Cable Tray Installation and

Cable tray installation must comply with specific technical standards to ensure electrical safety, system reliability, and long-term maintainability. This document

Integrated Aluminum Alloy
Die Casting



Durable and Secure Metal Screws



Cable Tray Installation Method Statement

Below is the detailed cable tray installation method statement not only for cable tray but also applicable for GI ladder and trunking for indoor and outdoor applications

[Contact Us](#)

Route piping over or under cable trays? , Eng-Tips

Does the radiant heat from piping impact routing underneath cable trays? This is just a general question because I came across another piece of

[Contact Us](#)



ITER Cabling Handbook

When cable trays have to connect two buildings and have to go through accessible trenches, the minimum size of the trenches must allow human access along the cable trays placed in these

[Contact Us](#)

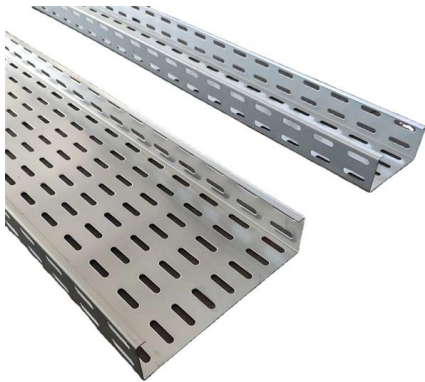




Best Practice Guide to Cable Ladder and Cable Tray Systems

This guide covers cable ladder systems, cable tray systems, channel support systems and associated supports intended for the support and accommodation of cables and possibly other electrical

[Contact Us](#)



Practices for grounding and bonding of cable trays

Grounding and bonding of cable trays There are three wiring options for providing an EGC in a cable tray wiring system: An EGC conductor in or on

[Contact Us](#)



Guide to cable support systems

This chapter deals with the correct dimensioning and the final selection of a cable support system, depending on the application, according to various influencing factors, such as cable volume, cable

[Contact Us](#)



Best practice guide to cable ladder and cable tray

Cable ladder and cable tray systems The following recommendations are intended to be a practical guide to ensure the safe and proper installation of

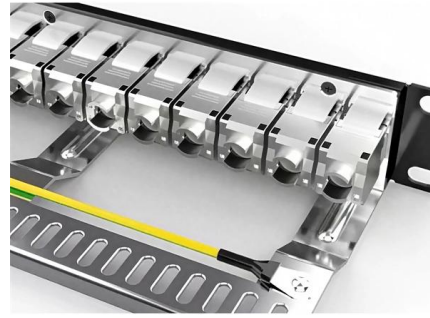
[Contact Us](#)



Explaining NEC Article 392 on Cable Trays

NEC Article 392 explains cable trays, their components, appropriate wiring methods for cable trays, and instances where they are and are not

[Contact Us](#)



Cable Tray SHIB NAL

Cable trays are not raceways, but they are treated as a structural component of a facility's electrical system. Cable trays are a part of a planned cable management system to support, route, protect and

[Contact Us](#)

Method Statement for River Cable Tray Crossing

This document outlines the method statement for building a cable tray river crossing for a solar power plant in Gorontalo. It involves installing pile foundations using a

[Contact Us](#)



B-Line series Cable Tray Design Considerations

Cable tray (or cable ladder) systems are a popular alternative to electrical conduit systems, as they have an outstanding record for dependable service, design flexibility and cost savings in commercial and

[Contact Us](#)

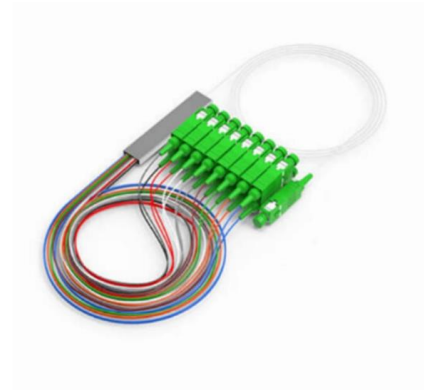
Cable Tray Technical Guide A practical



guide to product selection and

Cable Tray Technical Guide A practical guide to product selection and installation This guide for engineers and installers has been developed by ABB as a practical reference regarding cable tray

[Contact Us](#)



Cable Tray Technical Guide A practical guide to product selection and

The choice of method should be discussed with a local inspector. The best decision may be to extend only the cables, creating a discontinuity in the cable tray.

[Contact Us](#)



Method Statement installation of Cable Trays and Ladders

This method statement covers the site installation of the cable tray & ladders and the requirements of checks to be carried out.

[Contact Us](#)



FactSheet

FactSheet Electrical Safety Hazards of Overloading Cable Trays According to the 2005 National Electrical Code® (NEC), a cable tray system is " unit or assembly of units or sections and

[Contact Us](#)



Cable Tray and Trunking Installation Guide

Method Statement for Installation of Cable Tray or Trunking - Free download as PDF File (.pdf), Text File (.txt) or read online for free.

[Contact Us](#)



Technical Guidelines for Cable Tray Installation and

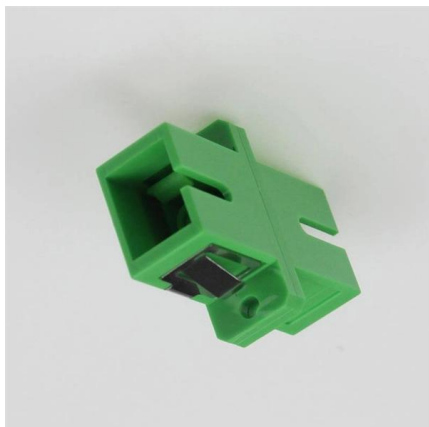
1. Route Planning and Layout Principles
Coordinate with Building Structure: Cable tray routing should align with architectural design, avoiding unnecessary

[Contact Us](#)

Method Statement For Cable Pulling and Final Electrical

This procedure covers the method for all the cable pulling, electrical connections and terminations for cables running on cable ladders and cable trays. Electrical

[Contact Us](#)



Cable Tray Installation

Learn everything about cable tray installation with our complete guide. Discover types, steps, and safety tips for efficient electrical cable management.

[Contact Us](#)



A Guide to Installing and Supporting Electrical Cable Trays

A professional guide to installing electrical cable tray systems per NEC Article 392. Covers support, securing cables, and fill calculations.

[Contact Us](#)



Contact Us

For datasheets, pricing, or custom fiber access solutions, please visit:
<https://www.frindel.es>