

# Connection between cable tray and shaft







### **CABLE TRAYS GENERAL INFORMATION AND**

Cable tray systems are to be installed so they are accessible. If possible 300mm minimum should be left above or between installed systems to allow for cable

[Contact Us](#)



### **CABLE TRAY SYSTEMS GUIDE**

Steel Ladder System Hubbell's NEXTFRAME® Ladder Tray is the effective and widely used cable runway that supports and delivers bundles of cable between cabinets, racks, and closets, along

[Contact Us](#)

Motor protection controller



### **Cable Tray and Conduit Installation Method Statement**

Step-by-step cable tray and conduit installation method with safety, quality and inspection procedures as per IEEE standards.

[Contact Us](#)





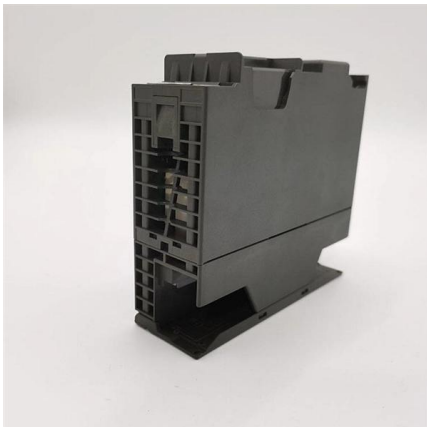
## Cable Tray Installation Overview , PDF , Building Engineering

The document provides detailed information on the installation of various cable trays, including their descriptions, starting and ending points, and sizes. It includes sections for different areas such as

[Contact Us](#)



SC connector  X 12



## Cable Tray Technical Guide A practical guide to product selection and

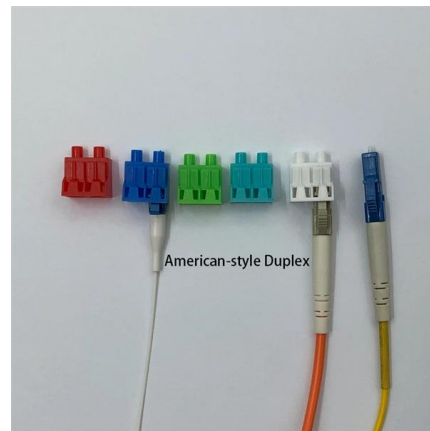
Cable tray length is selected based on the load to be supported, the distance between the supports (also referred to as the span), and handling and installation constraints.

[Contact Us](#)

## Avoiding Mistakes in Instrumentation Cable Tray

Learn how to avoid common mistakes in instrumentation cable tray installation. Follow IEC standards and EPC best practices for safe, reliable

[Contact Us](#)



## How to Install Cable Tray: A Comprehensive Guide to Different Cable

Welcome to our step-by-step guide on installing cable trays! In this video, we'll explore the different types of cable trays available and provide detailed instructions for their installation.

[Contact Us](#)





## GUIDE CABLE TRAYS TECHNICAL

NEMA VE 1-2017 Specifies requirements for metal cable trays and associated fittings designed for use in accordance with the rules of Canadian Electrical Code, Part I and the National Electrical Code®

[Contact Us](#)



### Cable Tray Installation Method Statement

Ensure the gaps between the trays which are mounted in tires are sufficient for the cable laying as per the approved installation details drawings. Cable Ladder and

[Contact Us](#)

### CABLE TRAY SYSTEMS GUIDE

Some applications may require the cable tray to support the weight of a single, dead object in addition to the cable loads. Specifications typically require this to be applied at the midpoint of the span between

[Contact Us](#)



### Cable Laying: Everything You Must Know

After determining the routing of the cabling, a structured cabling project initially needs to consider the laying of cable trays, which can be made of metal, conduit, or

[Contact Us](#)



## 100+ Essential Questions Answered About Cable Trays:

Discover over 100 expert answers about cable trays, covering key topics like material selection, load capacity, installation methods, and maintenance.

[Contact Us](#)



## Method Statement For Cable Pulling and Final Electrical

D - Cable drum setting Cable drum set must be made form good strong steel The shaft must be strong enough for the weight The stand's height must be correct

[Contact Us](#)



## B-Line series Cable Tray Design Considerations

Cable tray must be capable of supporting not just the weight of the cable, but also the weight of any equipment or materials attached to the cable tray. Additionally, dynamic environmental elements

[Contact Us](#)



## Best practice guide to cable ladder and cable tray

The following recommendations are intended to be a practical guide to ensure the safe and proper installation of cable ladder and cable tray systems

[Contact Us](#)

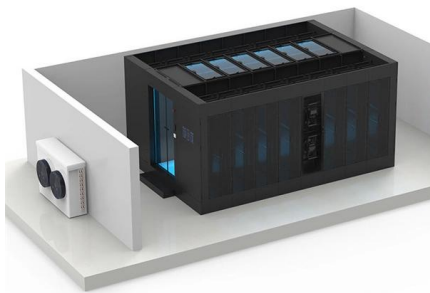




## What is a Vertical Cable Tray?

**Core Definition:** The Vertical Backbone for Cables  
A Vertical Cable Tray is a specialized support system designed to carry electrical and data cables

[Contact Us](#)



## Understanding Cable Pathways, Cable Conduits, Cable

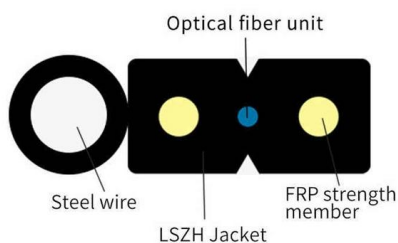
A cable pathway or raceway is a protective channel or enclosure made of materials like metal or plastic, used to manage and safeguard electrical cables and wires. It

[Contact Us](#)

## Cable Tray Spacing Standards for Installation and Safety

**Key Factors Impacting Cable Tray Spacing**  
Understanding cable tray spacing is key to meeting safety regulations and maintaining system

[Contact Us](#)



## ITER Cabling Handbook

These rules describe the layouts which are to be used for cable tray routing (connections between plants, buildings, devices and cubicles, or between cubicles or between devices).

[Contact Us](#)

## Best Practice Guide to Cable Ladder and



## Cable Tray Systems

This publication is intended as a practical guide for the proper and safe\* installation of cable ladder systems, cable tray systems, channel support systems and associated supports.

[Contact Us](#)



## Mesh cable tray systems

4 1 Product description OBO mesh cable tray systems stand out through their high load capacity and good ventilation. They can be used universally. The mesh cable trays are suitable for the installation

[Contact Us](#)

## Technical Specification for Cable tray installation and cable laying work

Approval of IPR shall be obtained for site preparation and marking the cable tray routes and locations of cable tray support before proceeding with the erection and installation work.

[Contact Us](#)



## Cable tray manual

Nearly every aspect of cable tray design and installation has been explored for the use of the reader. If a topic has not been covered sufficiently to answer a specific question or if additional information is

[Contact Us](#)



## GUIDE CABLE TRAYS TECHNICAL

In accordance with its continuous improvement policy, Legrand reserves the right to change the specifications and illustrations without notice. All illustrations, descriptions and technical information

[Contact Us](#)



### Avoiding Mistakes in Instrumentation Cable Tray

Learn how to avoid common mistakes in instrumentation cable tray installation. Follow IEC standards and EPC best practices for safe, reliable performance.

[Contact Us](#)

### GENERAL INFORMATION

Cable trays or raceways often provide a convenient, safe and efficient method of fiber optic cable installation. Trays can be installed in ceilings, below floors and in riser shafts. When installing fiber

[Contact Us](#)



## Contact Us

---

For datasheets, pricing, or custom fiber access solutions, please visit:  
<https://www.frindel.es>