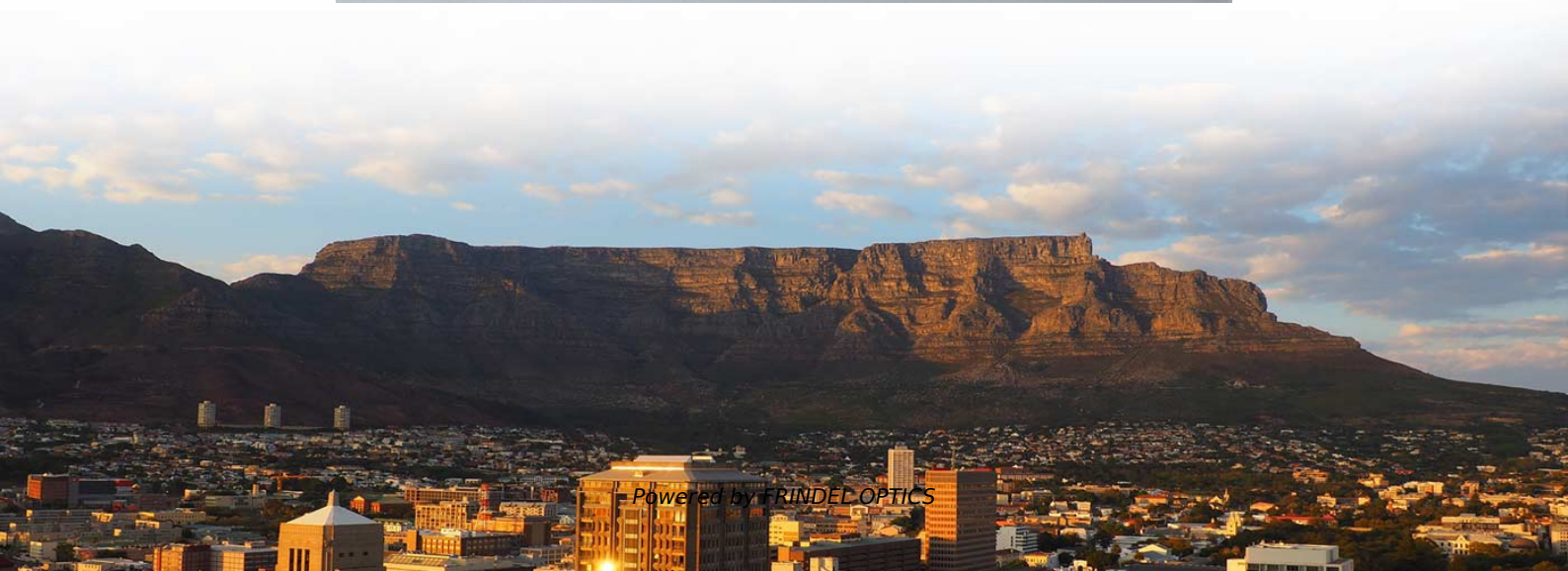


Compensation for Land Use for Buried Optical Cables





Compensation for Land Use for Buried Optical Cables



How Deep is Fiber Optic Cable Buried: A Technical Guide

The global fiber optic network, spanning over 1.8 million km as of 2025 (per TeleGeography), is a cornerstone of 5G rollouts, rural

[Contact Us](#)

Compulsory Purchase & Compensation

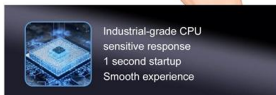
The fibre-optic cables were first installed in the early 1990's. At the time there was much debate about their installation - some electricity companies held that they had compulsory powers

[Contact Us](#)



5-INCH COLOR TOUCHSCREEN

Intuitive operation, easily accessible with just one touch



Industrial-grade CPU
sensitive response
1 second startup
Smooth experience

How Deep To Bury Fiber Optic Cable?

How Deep to Bury Fiber Optic Cable: Guidelines and Best Practices Burying fiber optic cables is a crucial step in ensuring the durability and longevity of a fiber optic network. The depth at

[Contact Us](#)

Compulsory Purchase & Compensation

There are predominantly 2 companies running fibre optic networks - Energis and Cable & Wireless. Energis have a nationwide agreed fee rate for equipment held on an annual basis. It is,

[Contact Us](#)



GENERAL INFORMATION

Direct Burial Installation Fiber optic cables are available for outdoor use. These cables may be strictly outdoor types or may be indoor/outdoor types which may provide greater versatility in campus type

[Contact Us](#)



1. Table of Contents

Buried optical cable needs to have a robust design to resist damage during its service lifetime. Since buried cable is generally laid in the trench or placed using heavy machinery, the difference in cable

[Contact Us](#)



Buried Cables: What are the Regulations for Buried

Learn about buried cable regulations, including the required burial depths in different locations and protective safety measures for underground cable.

[Contact Us](#)

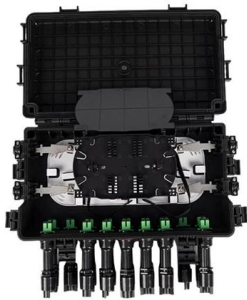


Broadband companies and telegraph poles



Can cables cross over private land? Under the ECC, broadband companies have a right to run cables between poles, including where the cable passes over private land. Cables can pass

[Contact Us](#)



How Much Are Wayleave Payment Rates & How to Claim? (2026)

Compensation for pipe laying or other works in land not involving the acquisition of land or legal interests in land, (as for example where a water main to a new housing estate could be

[Contact Us](#)

How Deep is Fiber Optic Cable Buried: A

The global fiber optic network, spanning over 1.8 million km as of 2025 (per TeleGeography), is a cornerstone of 5G rollouts, rural

[Contact Us](#)



How Deep is Fiber Optic Cable Buried

That's why, fiber optic cables need to be buried deeper in rural areas, like about 60-120 cm. Otherwise, you may cut down your own fiber optic cable just like a Reddit user (Twilight Panda).

[Contact Us](#)





Burying cables: what are the regulations for buried

What are the specific Regulations for buried cables? When we look at the risk an installation and its use may give rise to, BS 7671 only looks at four

[Contact Us](#)



Utility & Infrastructure Compensation

Whether you need help with negotiating terms, submitting compensation claims, or managing long-term agreements, we provide the expertise and support you need.

[Contact Us](#)

Overhead vs Buried Fiber Installation: Cost, Durability & Weunion

In the realm of optical fiber deployment, the choice between overhead and buried installation methods shapes network reliability, cost, and longevity. As a leading provider with two

[Contact Us](#)



Buried conduits and ducts

The use of unarmoured cables, such as HO7RN-F rubber flexible cables or unarmoured XLPE cables buried in the ground, is becoming more popular,

[Contact Us](#)



Direct-buried Installation of Fiber Optic Cable

Additional Cable Protection 2.16. In certain installation areas, for example, in frozen ground, rights-of-way with limited access (public highways, private property boundaries), it may be more efficient to

[Contact Us](#)



Wayleave and Easement Electricity Power Line Compensation Claim

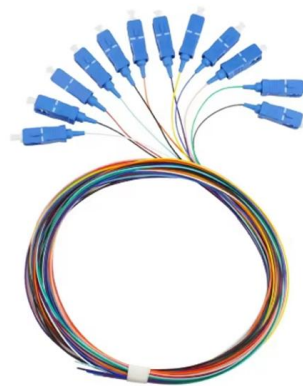
If you have a pole in a garden, overhead electricity lines or for underground cables, then the process of claiming compensation for electricity cables is simple

[Contact Us](#)

Burial depth standard for direct buried optical cable

Burial depth standard for direct buried optical cable The burial depth of the direct-buried optical cable shall meet the relevant provisions of the engineering design requirements of the communication

[Contact Us](#)



Fibre optic cables

For such commercial use, the owners, over whose land the fibre optic cables pass, are entitled to a one-off compensation payment. Fibre optic cables are run in the central axis of extra-high-voltage

[Contact Us](#)



Buried Cable Installation Best Practices (1)

1.0 GENERAL 1.01 This best practices procedure provides general information for the installation of fiber optic cables in direct buried applications. The methods described are intended for guideline use only,

[Contact Us](#)



Wayleave negotiation & compensation specialists

Whether you're dealing with restricted development layouts, wayleave notices, or seeking compensation for injurious affection or land sterilisation, we provide the

[Contact Us](#)

Wayleave Payments & Wayleave Agreements: How to

Find out what wayleave payments or wayleave agreements are and whether you can get monetary compensation for poles, posts and cables on your

[Contact Us](#)



Locating Buried Cable

It is often necessary to locate buried optical fiber cable to prevent dig-ups during construction, to access fibers for termination, to effect repairs, or for other reasons. The ability to

[Contact Us](#)

How Deep Are Fiber Optic Cables Buried?



Detailed

Learn how deep fiber optic cables are typically buried (12-36 inches) and what factors affect their burial depth. Avoid damage and ensure proper

[Contact Us](#)



Telecoms and Utilities on Your Land: Understand Your

The Electronic Communications Code (ECC) gives these builders rights to enter land to install and service their infrastructure, but this usually

[Contact Us](#)

How Much Are Wayleave Payment Rates & How to

Do you have powerlines over your property or electricity poles your land? If so you could be entitled to a Wayleave payment as compensation. Find out how to claim

[Contact Us](#)



Utilities easements: it's not just the cables that can

With the right advice, and in a number of situations, there are opportunities to receive significant payments in relation to agreeing to have

[Contact Us](#)





Fibre optic cables

The amount of compensation paid is based on the length of the fibre optic link measured in meters (m). This is carried out using true-to-scale maps, measuring between the starting point where the cable

[Contact Us](#)



OSP Civil Works Guide-FOA

OSP Fiber Optics Civil Works Guide An updated version of this booklet is now available as a textbook on Amazon, is included in the FOA Reference Guide to Outside Plant Fiber Optics and as a section

[Contact Us](#)

Contact Us

For datasheets, pricing, or custom fiber access solutions, please visit:
<https://www.frindel.es>