

# Comoro Galvanized Trough-Type Horizontal Cable Tray





## Overview

---

Trough Type Galvanized Cable Tray is a fully enclosed cable management system, typically made of Q235 steel with hot-dip galvanized coating for corrosion resistance. Its rectangular trough shape with removable cover shields cables from dust, moisture, and electromagnetic interference. Atkore Trof is a prefabricated mill-galvanized steel structure consisting of ventilated or solid bottoms, welded to the side rails, and is manufactured and tested to NEMA Standard VE-1 Zero Tangent Fittings Tangent eliminate the wasted space in tightly packed areas, allowing more tray runs to. Wescosa designs and manufactures cable tray systems, including perforated tray, cable ladder, channel tray and strut (metal framing), directly from production facilities in Dammam Saudi Arabia. All trays are manufactured and tested in accordance with the latest NEMA and IEC 61537 Standards. We at Integrated Steel hold a pan-Saudi Arabia presence to supply cable trays of the highest industrial standards to businesses, factories, manufacturing units, and other setups to create an efficient Cable Tray System that is acclimatized to match any weather conditions.



## Comoro Galvanized Trough-Type Horizontal Cable Tray

---



### 12-SDMS-06

Trough Type Trough tray shall be prefabricated structure greater than 102 mm in width consisting of a ventilated/perforated bottom within integral or separate longitudinal side rails.

[Contact Us](#)

### CABLE LAddEr TrAY

Cable tray system components and cable ladder tray system components have been declared electrically non conductive. An overall accuracy of surface resistance has been guarantee: surface

[Contact Us](#)



### Cable tray

Medium duty to ultra heavy duty, to cover all types of installation. Reliable: Cable tray systems open design eliminates moisture buildup and reduces damage to cable

[Contact Us](#)



### Type of Cable Tray

Galvanized Coatings The most widely used coating for cable tray is galvanizing. It is cost-effective, protects against a wide variety of environmental chemicals, and is self-healing if an area becomes



### **Hot Dip Galvanized Cable Tray Manufacturers , HDG GI**

Durable Hot Dip Galvanized (HDG) cable trays designed for superior corrosion resistance, strength, and reliable cable management in industrial and outdoor

[Contact Us](#)



### **AF\_UnifiedCat\_Interior\_PRINT.pdf**

Our latest innovation is Itray. It's aluminum cable tray that been redesigned with stronger side rails and faster splicing options to streamline the engineering, purchasing and installation of cable tray. And

[Contact Us](#)



### **Cable Tray Systems**

Our cable tray systems securely hold and protect cables and come in many models and sizes, solid bottom and ventilated.

[Contact Us](#)





## Artim Metal, Metal Cable Trays, Cable Tray,

60 Series Perforated 60 Series Perforated hot-dip, heavy-duty, durable cable transportation system. It provides superior protection against corrosion and

[Contact Us](#)

Length:14.5mm  
Small-end inner diameter:2.0mm  
Large-end inner diameter:3.5mm  
Outer diameter:5.2mm



## Steel cable tray

The maximum open spacings between cable support surfaces of transverse elements do not exceed 102 mm (4 in.) in the direction parallel to the tray side rails (rung to rung).

[Contact Us](#)

## B-Line series Cable Tray Design Considerations

Is your cable tray system optimized for safety, dependability, space and cost savings? Cable tray (or cable ladder) systems are a popular alternative to electrical conduit systems, as they have an

[Contact Us](#)



## What are the main types of cable tray?

Introduce the main types of cable tray including ladder cable tray, perforated cable tray, solid bottom cable tray and wire mesh cable tray.

[Contact Us](#)



## Trough Type Galvanized Cable Tray

Its rectangular trough shape with removable cover shields cables from dust, moisture, and electromagnetic interference. Widely used in industrial plants, data centers, and infrastructure

[Contact Us](#)



## What are the Five main types of cable trays?

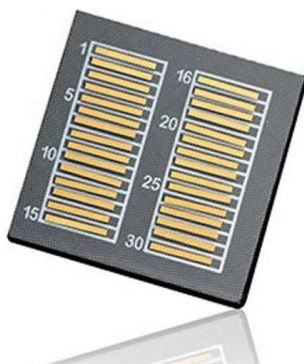
The installed cables can be freely drawn forth from the ventilation openings by easily processed slots or holes through the tray on site. Perforated

[Contact Us](#)

## 12-SDMS-06

Carbon steel cable trays intended for installation in corrosive or highly corrosive environments with severe alkaline and acidic conditions shall be hot-dip galvanized zinc after fabrication.

[Contact Us](#)



## Cable Troughs

Open-Frame Cable Trough mounts horizontally on rack angles to support cables and power cords. ProLine Horizontal Cable Trough provides cable routing from front

[Contact Us](#)

## Wire Ways / Cable Trays



Our Wire Ways and Cable Trays channels electrical cables and wires from the source panelboard to another panelboard or electric loads.

[Contact Us](#)



### **Cable Tray And Fittings , Graybar Store**

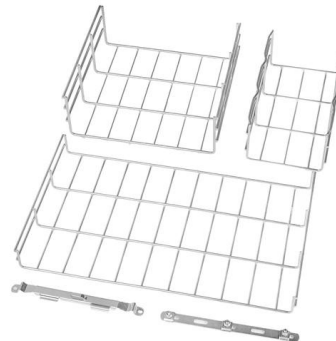
A cable tray system is used to support insulated electrical cables used for power distribution, control, and communication. Cable trays are used as an alternative to open wiring or electrical conduit

[Contact Us](#)

### **Cable Tray Technical Guide A practical guide to product selection and installation**

A practical guide to product selection and installation This guide for engineers and installers has been developed by ABB as a practical reference regarding cable tray characteristics, installation, and

[Contact Us](#)



### **Cable Trays**

Bahra Electric Cable Trays offer numerous benefits, including: Improved Safety: By containing and securing cables, cable trays help prevent tangles, tripping

[Contact Us](#)



### Hot-Dipped Galvanized Trof Cable Tray

Hot Dip Mill-Galvanized steel (ASTM-A-653-G90 CS) is zinc coated by a hot dip process Generally used indoors or in locations not exposed to the elements or

[Contact Us](#)



### Galvanized Steel Trough Cable Tray: Durable & Corrosion-Resistant

Discover galvanized steel trough cable trays with fire resistance, UL 870 compliance, and quick installation. Click to explore top-rated suppliers, customization options, and bulk pricing for

[Contact Us](#)



### Cable Tray

HDGI Perforated Cable Tray HDGI (Hot-Dip Galvanized Iron) Perforated Cable Trays are robust cable management systems made from steel sheets that are hot-dip

[Contact Us](#)



### Imperial cable tray and ladder

B-Line series imperial cable tray is designed to reduce support costs. Learn about our multiple-point welding system that results in unmatched strength and reliability.

[Contact Us](#)



## Cable Management System

Best constructed tray available for multiple large cables. Typically used by power plants, oil refineries, on and off shore platforms, desalination plants, commercial sites and industrial construction sites

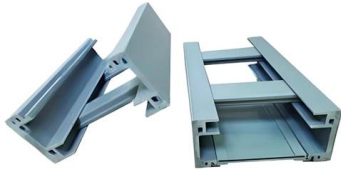
[Contact Us](#)



## Bend cable tray

Types of Bend Cable Trays A bend cable tray is a crucial component in electrical infrastructure systems, designed to route and support cables around corners, curves, and directional changes. These trays

[Contact Us](#)



## HDG Ladder Cable Tray , Cable Ladder Manufacturer

Hot Dip Galvanized (GI) Ladder Cable Trays are metal trays with a ladder-like design, coated with a layer of zinc through the hot-dip galvanizing process. The

[Contact Us](#)



## Cable Tray Ladder Trunking Wire Basket Installation

Cable trays are available in different configurations, straight sections are available to route cables in a horizontal or vertical plane. Fittings are available to route cables

[Contact Us](#)



## Contact Us

---

For datasheets, pricing, or custom fiber access solutions, please visit:  
<https://www.frindel.es>