

# Channel-type cable tray elbow models





## Channel-type cable tray elbow models

---



### Types of Cable Trays - Purpose, Advantages,

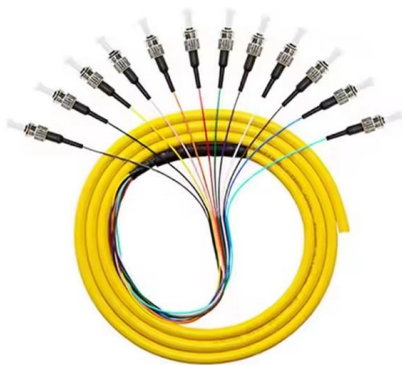
Cable tray is alternatives to wire ways and electrical conduits, which completely enclose cables. Study types of cable trays, purpose, advantages.

[Contact Us](#)

### Download 3D CAD models for free , 3Dfindit

Free 3D CAD models for download Search now in more than 6000 3D CAD catalogs Mechanical engineering, architecture (BIM), and much more.

[Contact Us](#)



### INTRODUCTION

ALUMINUM CABLE LADDERS STRAIGHT CABLE LADDER (ALUMINUM) HORIZONTAL ACC. FOR CABLE LADDER (ALUMINUM) TEE & X ALUMINUM VERTICAL ACC. FOR CABLE LADDER

[Contact Us](#)

### Cable Tray and Trunking Overview , PDF , Length

Cable Tray - Free download as PDF File (.pdf), Text File (.txt) or read online for free. The document discusses different types of cable containment systems including



### **Cable channel , Instrumentation cable management**

B-Line series ventilated and non-ventilated channel cable tray are available in a wide range of material and sizes. Find the perfect fit for your next job.

[Contact Us](#)



**5"**

Enhance cable routing with Primus Cable's Horizontal 90° Elbow. Engineered for smooth 90° sweeps, it meets minimum bend radius and allows quick, secure install.

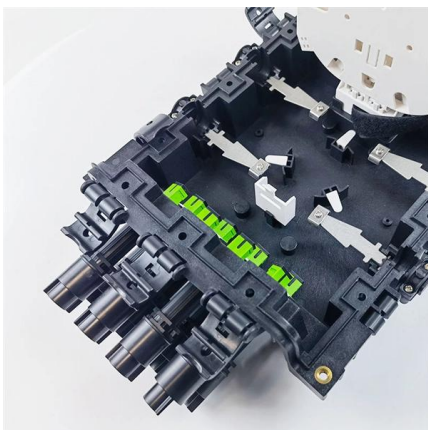
[Contact Us](#)



### **Cable Management System**

Best constructed tray available for multiple large cables. Typically used by power plants, oil refineries, on and off shore platforms, desalination plants, commercial sites and industrial construction sites

[Contact Us](#)





## Types of Cable Trays - Advantages, Applications and Sizes

Explore the types of cable trays, their advantages, applications, and standard sizes. Learn how they improve cable management and support various industries.

[Contact Us](#)



## Cable Tray Revit Families - Download Free Cable Tray BIM Content

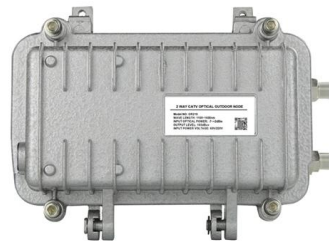
Download cable tray BIM objects with BIMsmith Market. Cable trays help keep complex technology systems safe and secure without detracting from the appearance of the surrounding environment.

[Contact Us](#)

## Cable Tray Technical Guide A practical guide to product selection and

**SOLID-BOTTOM CABLE TRAY** Providing additional cable protection, solid-bottom cable tray is sometimes preferred to support and protect numerous small instrumentation and control cables.

[Contact Us](#)



## T& B Cable Tray Systems Design Tools , ABB

Find and download Intergraph Smart 3D CAD VUE files for T& B cable trays. These files are commonly used for 3D modelling and visualization in the design of

[Contact Us](#)



## CHANNEL CABLE TRAY

Trays are to be fabricated from continuous roll-formed structural quality steel. Sides are to be solid as well as bottom for maximum cable enclosure and support.

[Contact Us](#)



## Channel tray

Cable channel T& B offers cable channel in solid or ventilated straight sections. Ventilated channel has burr-free oblong punched holes for easy access. Ty-Rap cable tie slots are provided between each

[Contact Us](#)



## Aluminum Channel Horizontal Elbows 45°

Atkore Channel supports single branches of power or multiconductor control cable or instrument tubing. Ideal for communication, fire alarm, or call station and clock cabling. All elbows are supplied with one

[Contact Us](#)



## 45° Horizontal Elbow , Cable Tray Systems , PUPCO

The 45° Horizontal Elbow boasts a horizontal bend that grants the flexibility for a 45° cable tray to navigate left or right. Moreover, this design ensures a secure cable

[Contact Us](#)





## A T& B Cable Tray Metallic cable tray

Introduction Cable tray wiring systems offer significant advantages over conduit pipe and other wiring systems. Cable tray is more cost efficient, more reliable, more adaptable to changing needs and

[Contact Us](#)



## Channel cable tray specification document

Channel cable tray straight sections shall be constructed with ventilated flat bottom. Ventilated bottom shall be perforated with 2.25" diameter holes and have slots to facilitate the use of cable ties to

[Contact Us](#)

## CABLE TRAY, CABLE LADDER, CABLE TRUNKING CATALOGUE

Fitting and accessories. with the same or different width of the cable run. All fittings are available in sizes and types corresponding to the straight cable tray sections. These fittings are including: elbow,

[Contact Us](#)

- ✓ Slow Axis Aligned (0°) - for standard sensing applications
- ✓ Fast Axis Aligned (90°) - for special modulation applications
- ✓ 45° Axis Aligned - for depolarizer applications



## Product Catalogue Cable Management Solutions

Delivering engineered solutions in cable management ABB manufacturers a comprehensive range of cable tray systems and solutions including cable ladder, perforated tray, channel tray and metal

[Contact Us](#)



### Cable trays: 3D models

Discover all CAD files of the "Cable trays" category from Supplier-Certified Catalogs SOLIDWORKS, Inventor, Creo, CATIA, Solid Edge, autoCAD, Revit and many more CAD software but also as STEP,

[Contact Us](#)



### Sterling Duro Enterprise

WIREMESH TYPE CABLE TRAYS Wire mesh cable management system produced from high mechanical strength steel wires. It is produced by first welding a net, forming the channel, and then

[Contact Us](#)



### CAD Forum

CAD/BIM Library of blocks "cable tray" ? Free CAD+BIM Blocks, Models, Symbols and Details Free CAD and BIM blocks library - content for AutoCAD, AutoCAD LT, Revit, Inventor, Fusion

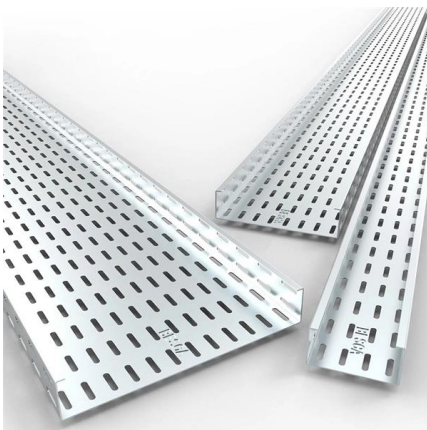
[Contact Us](#)



### 5"

Create a 45° or 90° downward angle in fiber cable trays with this elbow. Tool-free installation, flame-retardant PVC construction, and snap-on cover included.

[Contact Us](#)

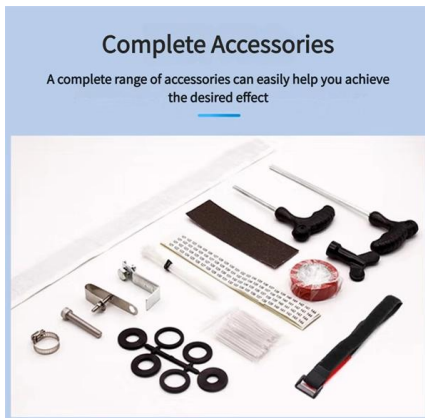




## Cable trays

We offer a wide range of cable tray systems to support tubing, electrical cables and instrumentation. Our cable trays are produced in fit for purpose materials like

[Contact Us](#)



## Channel cable tray specification document

2.05 General: Except as otherwise indicated, provide ventilated metal channel cable trays, of types, classes and sizes indicated with splice connectors, fittings and all other necessary accessories for a

[Contact Us](#)

## Contact Us

---

For datasheets, pricing, or custom fiber access solutions, please visit:  
<https://www.frindel.es>