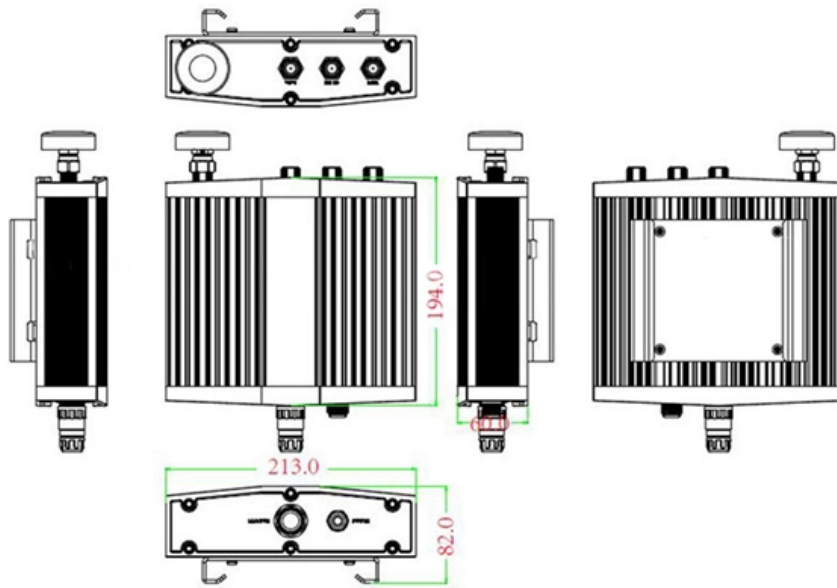


Cascading Non-standard PoE Switches

Mechanical drawing





Cascading Non-standard PoE Switches



A Step-by-Step Guide to Integrating Non-PoE Devices

Step 2. Install a PoE Switch A PoE network switch connects all the devices on a local area network. PoE functionality enables devices on a network to communicate

[Contact Us](#)

Can I Plug a non-poe Device into a Poe Port? : r/Ubiquiti

In general, yes. I think there's a few less standard PoE implementations, but normal PoE is turned on as needed. For my day job we have tons of offices with 48 port PoE switches (not Ubiquiti) and they're

[Contact Us](#)



How To Connect POE Switch To POE Switch

The standard POE chip switch is serially connectable at the POE port. The standard chip switch can automatically detect the powered device, and the switch will not supply power without the

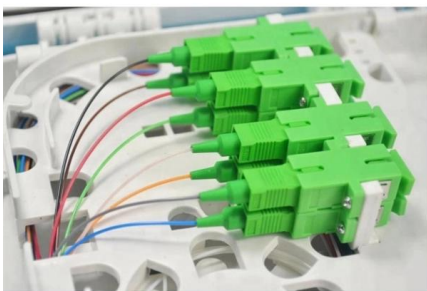
[Contact Us](#)



How To Connect POE Switch To POE Switch

POE switches are divided into standard POE chip machines, monolithic machines and non-standard POE switches. The cascade ports of different types of switches

[Contact Us](#)



PoE vs. Non-PoE Switch: Power Your Devices (USA)

Confused by PoE vs. Non-PoE switches? We break down the key differences to help you pick the right switch for your network in the USA. Power

[Contact Us](#)

Switch cascading, stacking, and clustering: Understanding the key

Discover key differences between switch cascading, stacking, and clustering in network management. Learn how each

[Contact Us](#)



Please read

Planning for PoE in Industrial IoT: PoE planning involves power budgeting, environmental considerations, scalability, standards compliance, and the right PoE PSE selection.

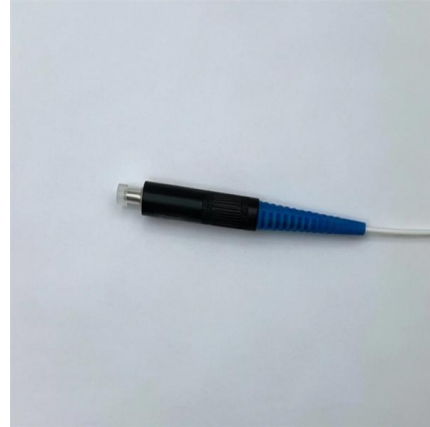
[Contact Us](#)



Challenges and solutions for PoE systems in Ethernet switches

Controlling power-sourcing equipment (PSE) in an Ethernet switch is complicated, however, given the limited capability from the power supply and the multiple power supplies that exist for redundancy in

[Contact Us](#)



FS Community

Hier sollte eine Beschreibung angezeigt werden, diese Seite lässt dies jedoch nicht zu.

[Contact Us](#)

How to distinguish PoE and ordinary non-PoE switches

In summary, by in-depth understanding of the functional differences, application scenarios, technical characteristics, and differentiation methods of

[Contact Us](#)



Problem Solved: Mixing PoE and Non-PoE on the Same Network Switch

Can You Mix Poe and Non-Poe Devices on The Same Network Switch? Use Poe Injectors to Connect Non-Poe with Poe How to Use The Poe Injector Use Poe Splitters to Connect Poe with Non-Poe How Does A Poe Splitter Work? How to Use The Poe Splitter Well, it all depends on what type of switches you're using. If you're using a regular network switch, there'll be no hazard connecting both PoE and non-PoE devices on the same modem, but the question is only data can



be transmitted down the network cable since the regular network switch is not PoE-enabled to supply power over Ethernet. BuSee more on fastcabling cetuselectronic

PoE and Non-PoE Device Compatibility Detailed

Understanding the compatibility between PoE and non-PoE devices is essential for stable network operation.?? This understanding also helps prevent potential device damage.

[Contact Us](#)

cascading switches of different type

To answer both questions: Yes you can put PoE switch or midspan (known as a PSE, for power sourcing equipment) in-line. Regarding PoE phantom power PoE over Gigabit Ethernet

[Contact Us](#)



Cascading connection of Reverse PoE switch with optic

Use one patch cord to connect the two switch through SFP ports too. Normally, such cascading connection supports Max. 5-6 pieces gigabit reverse PoE switches.

[Contact Us](#)

Problem Solved: Mixing PoE and Non-PoE on the Same

Well, it all depends on what type of switches you're using. If you're using a regular network switch, there'll be no hazard connecting both PoE and

[Contact Us](#)





How to Connect Multiple Ethernet Switches: Cascade,

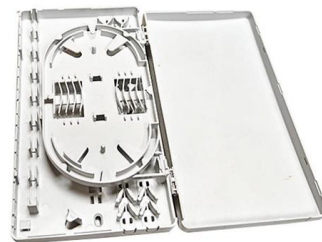
This article will explore three common connection methods: switch cascading, switch stacking, and switch clustering, and will help you determine the

[Contact Us](#)

Cascading of Reverse PoE Switch

About these reverse PoE switches, the 1-7 ports are 24-48V PoE in, 8th port is PoE out. The uplink data is come from fiber switch, and then transmit to reverse PoE switch till to user's home.

[Contact Us](#)



PoE vs Non-Standard PoE: Compatibility & Risks

It is undeniable that PoE technology brings convenience to network deployment. We should also pay attention to the compatibility and safety risks

[Contact Us](#)

The Definitive Guide To Power Over Ethernet , PoE

However, if the PoE switch and PD do not support the same standard, they must negotiate to provide the PD with a lower amount of power. PoE negotiation aims

[Contact Us](#)





What is a PoE Switch

PoE Switches - what are they, when to use them, what to know about them, and when not to use them. Power over Ethernet is a valuable technology

[Contact Us](#)

How to Choose a PoE Switch, Standard or Non-Standard?

So it is important to make sure you buy a non-standard PoE switch that matches the power specifications exactly to the PD device you are trying to power on. Otherwise, you can easily burn up

[Contact Us](#)



Standard PoE Switches and Non-standard PoE Switches

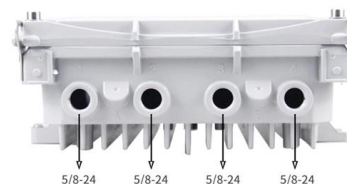
Standard PoE switches are the preferred power supply for IP-based end devices such as IP phones, IP cameras, wireless access points (APs), etc.

[Contact Us](#)

Switch cascading: Definition, functions & usage

Through cascading connections, network traffic can be dispersed among multiple switches to prevent a single switch from becoming a bottleneck of

[Contact Us](#)





cascading switches of different type

David1618 IS correct~ Gigabit Ethernet uses all 4 pairs (8 conductors). The transmission scheme is radically different from 10 and 100 Mbit/s standards (PAM-5: a 5 level amplitude

[Contact Us](#)

PoE Vs Non-PoE Ubiquiti Switches , Differences, Use Cases & Best Models

PoE vs Non-PoE Ubiquiti switches explained. Find the right UniFi switch for business or home networks. Order now with fast shipping.

[Contact Us](#)



Comparing PoE vs Non-PoE Switch: Can They Work

In contrast, non-PoE switches handle data transmission only. They do not supply power and require all connected devices to have their own power

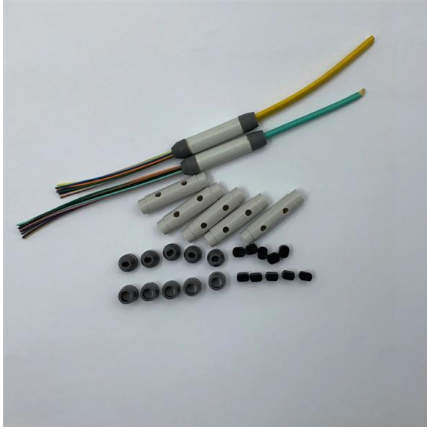
[Contact Us](#)

PoE vs. PoE+ vs. PoE++: What's the Difference?

Learn key differences between PoE vs PoE+ vs PoE++. Compare power output, device compatibility, and use cases to find the best PoE switch for

[Contact Us](#)





Deco X50-POE on cascade

The POE ports on the Deco X50-POE could only receive power and can't be used to power other PoE-supported devices. I'm afraid the "cascade" layout didn't work and you need to

[Contact Us](#)

Contact Us

For datasheets, pricing, or custom fiber access solutions, please visit:
<https://www.frindel.es>