

Can the ground cable in the distribution box be replaced





Can the ground cable in the distribution box be replaced



The installation requirements for the distribution box

Learn how to install a distribution box safely and correctly. Covers wiring, placement, standards, and expert tips for a compliant setup.

[Contact Us](#)

Electrical Distribution Box Installation Mistakes

The Electrical Distribution Box is a very important part of the power system, improper installation will cause a lot of danger and loss. Here are some things that go

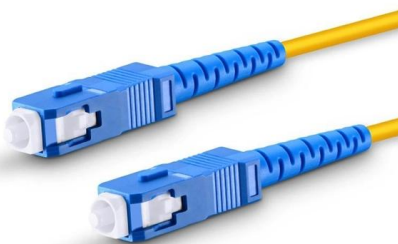
[Contact Us](#)



Grounding Practices in Power Distribution Systems

High-Resistance Grounding (HRG): To provide a safe amount of ground fault current, HRG systems employ a high-resistance grounding resistor. This approach keeps

[Contact Us](#)



The Importance of Ground Wires in the Breaker Box: A

The ground wire in a breaker box is a crucial element of an electrical system, providing safety and preventing electrical shocks. Learn more about its



Reuters , Breaking International News & Views

Find latest news from every corner of the globe at Reuters , your online source for breaking international news coverage.

[Contact Us](#)



Can you repair a ground wire or does it necessitate replacement?

When faced with a damaged ground wire, you may wonder if it is possible to repair it or if it necessitates complete replacement. In this article, we will explore whether ground wires can be repaired and the



[Contact Us](#)



Where should I connect ground in my new service panel?

I also have installed my 200amp panel on the inside. I used an SEU 4/0 cable with 2 hots and a neutral. Question 1. Now I am

[Contact Us](#)

How To Ground Electrical Enclosure: The



Complete Guide

Control panels typically feature an input power feed having a grounding conductor that is ultimately bonded to the electrical enclosure. This

[Contact Us](#)



9 Recommended Practices for Grounding

Use equipment grounding conductors sized equal to the phase conductors to decrease circuit impedance and improve the clearing time of

[Contact Us](#)



Am I supposed to ground the breaker box itself?

That directly connects to my box, with nothing else inbetween. The cables coming from the pole into the shed brings in two wires - one red, one

[Contact Us](#)



NEC Requirements for Panelboards and Load Centers

Grounding electrodes (e.g., ground rods) must be used, and a grounding conductor must connect the panel to them. A panelboard must have a terminal bar for

[Contact Us](#)





How to Fix an Electrical Ground Wire

Step 3.7 - You can then move to the next electrical box on that circuit and remove the ground wire and the neutral wire of the same cable from their

[Contact Us](#)



How do you ground a plastic electrical box

If there is any damage or cracks in the electrical box, you should repair it first before grounding it. In addition, you also need to check whether the

[Contact Us](#)

How To Run A Ground Wire To An Electrical Panel Box

Your service panel's ground wire prevents a line fault from becoming a shocking experience. By shunting excess line voltage back to the panel's neutral pole, the ground current

[Contact Us](#)



How To Ground Your Electrical Panel and Service Disconnect

Electrical Grounding & Bonding: Top Mistakes to Avoid for a Successful Installation: Don't make common mistakes that can lead to a dangerous electrical system. Follow this video to learn what to

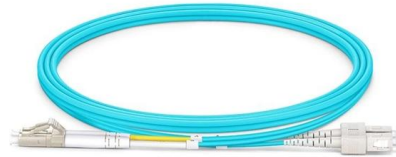
[Contact Us](#)



The installation requirements for the distribution box

If there are electrical components in the distribution box that need to be grounded, copper core wires can be used to connect these components to the

[Contact Us](#)



Replacing an Electrical Service

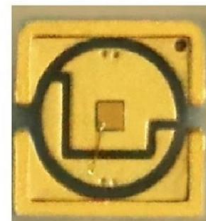
We replaced it because it was of insufficient capacity and was clearly unsafe: Live metal parts were exposed in a ground-level outdoor wooden

[Contact Us](#)

How to Install a Cable Distribution Box Safely and

In modern electrical systems, cable distribution boxes (also known as electrical distribution boxes or distribution boxes) play a crucial role as the key

[Contact Us](#)



DISTRIBUTION BOX

Each DISTRIBUTION BOX and controller must be grounded. On the US market, a 5.26 mm² (10 AWG) ground wire must be used, and in all other markets a 6 mm² must be used.

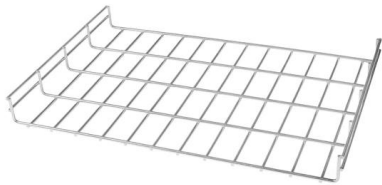
[Contact Us](#)



How To Ground A Circuit Breaker Box Safely: A Step-by

Q1: How do I know if my circuit breaker box is grounded? A: Look for a thick bare copper or green wire extending from the grounding bus bar inside

[Contact Us](#)



Why are Neutral and Ground Wires Separated in a

What Happens If You Bond Neutral and Ground in a Subpanel? Why Do Neutral and Ground Need to Be Separated in a Remote Distribution Panels?

[Contact Us](#)

DISTRIBUTION BOX

The extra ground wire between the mounting plate and the spindle plate can be omitted in certain applications: If the tool cable is maximum 30m. If two or more spindles are used, and



[Contact Us](#)



Grounding System Installation Standards for Distribution Boxes and

Today, we're diving deep into the world of distribution box grounding, breaking down the standards, and shining a light on those sneaky mistakes that even experienced electricians sometimes make.

[Contact Us](#)



Electrical Box Ground Wire Connectors & Connections

How to make proper & safe electrical ground wiring connections in the box: This article describes options for connecting a metal electrical box to the grounding conductor & connecting the grounding

[Contact Us](#)



Electrical Panel Grounding and Bonding

The topic of grounding and bonding is a never ending area of confusion. The difference between a service panel and a sub panel is also muddy in many

[Contact Us](#)

Contact Us

For datasheets, pricing, or custom fiber access solutions, please visit:
<https://www.frindel.es>