

# Can cable trays be installed facing downwards





## Can cable trays be installed facing downwards

---



### 10 Common Mistakes in Ladder Cable Tray Installation

Final Thoughts Installing ladder cable trays requires careful planning, proper materials, and adherence to best practices to avoid costly mistakes. By

[Contact Us](#)

### Explaining NEC Article 392 on Cable Trays

NEC Article 392 explains cable trays, their components, appropriate wiring methods for cable trays, and instances where they are and are not

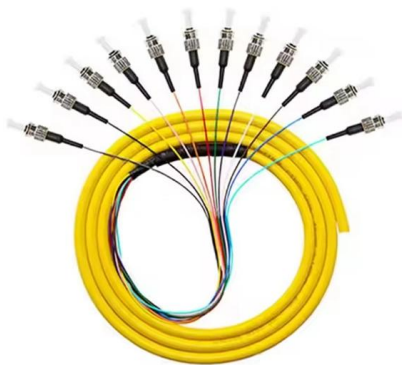
[Contact Us](#)



### Cable Tray Technical Guide A practical guide to product selection and

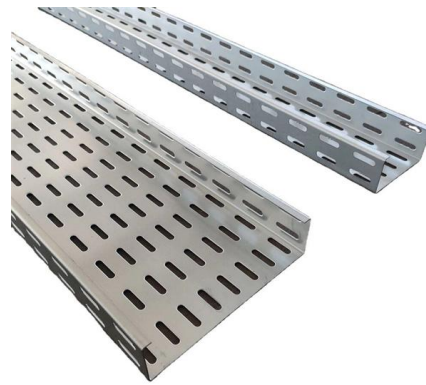
A practical guide to product selection and installation This guide for engineers and installers has been developed by ABB as a practical reference regarding cable tray characteristics, installation, and

[Contact Us](#)



### Cable tray manual

Where the cable type may be used, cable tray may be installed to support it except as per Section 392.12 which states that cable trays shall not be installed in hoistways or where subject to severe



### **Cable Tray Systems: Requirements and Best Practices**

Comprehensive guide to cable tray systems requirements: tray types, materials, loading, supports, bonding, routing, and best practices for safe electrical cable management.

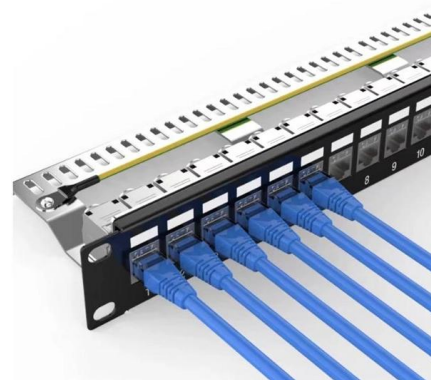
[Contact Us](#)



### **Best Practices for Installing Cables in Trays**

Learn the best practices for installing cables in trays. This guide covers essential steps, technical requirements, and key details

[Contact Us](#)



### **Cable Tray Installation and Maintenance Considerations**

Learn about effective Cable Tray Installation and Maintenance. Get practical tips for planning, fitting, and looking after your cable trays.

[Contact Us](#)

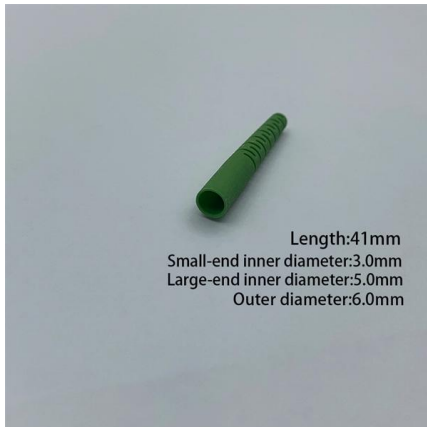
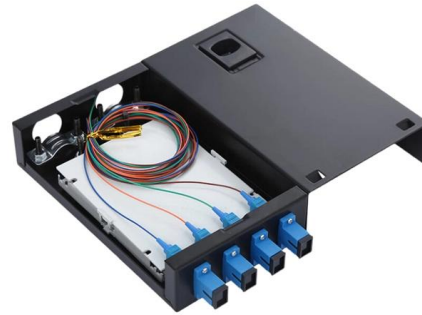
### **Best Practice Guide to Cable Ladder and**



## Cable Tray Systems

Cable ladders and cable trays should be mounted far enough off the floor or roof to allow the cables to exit through the bottom of the cable ladder or cable tray.

[Contact Us](#)



## Guide to cable support systems

The mesh cable trays are suitable for the installation of power cables and cables in various areas of application. The grid spacings mean that cables can be inserted and run out in various directions.

[Contact Us](#)

## Technical Guidelines for Cable Tray Installation and

Cable tray installation must comply with specific technical standards to ensure electrical safety, system reliability, and long-term maintainability. This document

[Contact Us](#)



## FAQ , Cable Tray Institute

Question: Is it necessary to provide tie-down cables installed in a cable tray? Answer: Yes; cables are tied down in cable trays to keep the cables in the cable tray, to maintain spacing between cables, or

[Contact Us](#)



## Precautions for Cable Tray Installation

Cable Tray Installation Guide The correct installation of cable trays is crucial for establishing a reliable and efficient cable system. It ensures that cables are

[Contact Us](#)



## Cable Tray Technical Guide A practical guide to product selection and

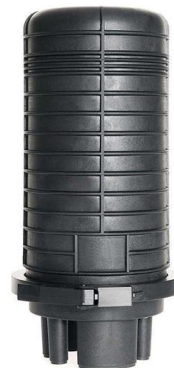
Cable tray installed in a hazardous location must contain only those cables that are appropriate for this type of environment as defined in Chapter 5 of the NEC.

[Contact Us](#)

## A Guide to Installing and Supporting Electrical Cable Trays

A professional guide to installing electrical cable tray systems per NEC Article 392. Covers support, securing cables, and fill calculations.

[Contact Us](#)



## Cable Tray Questions , Cable Tray Institute

Answer: There is no NEC or other limitation on cable trays that would prevent the "Edge-Wise" orientation. The CTI needs to develop guidelines for this installation. This type of installation

[Contact Us](#)



### Are Panduit wire basket cable trays upside down?

Those cable trays are indeed designed to be installed "upside-down". The "sidewalls" of the Wyr-Grid aren't really high enough to hold a significant number of cables anyways.

[Contact Us](#)



### Best Practices for Installing Cables in Trays

Learn the best practices for installing cables in trays. This guide covers essential steps, technical requirements, and key details for efficient cable

[Contact Us](#)

### Are Panduit wire basket cable trays upside down?

Those cable trays are indeed designed to be installed "upside-down". The "sidewalls" of the Wyr-Grid aren't really high enough to hold a significant number of cables anyways. There are clip

[Contact Us](#)



### Cable Tray Systems: A Complete Guide to Types

Discover the essential guide to cable tray systems. Learn about ladder, trough, and wire mesh types, key components, and expert installation tips

[Contact Us](#)



## GENERAL INFORMATION

Cable trays or raceways often provide a convenient, safe and efficient method of fiber optic cable installation. Trays can be installed in ceilings, below floors and in riser shafts. When installing fiber

[Contact Us](#)



### How to Install Cable Tray: A Comprehensive Guide to Different Cable

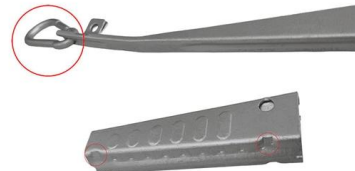
Welcome to our step-by-step guide on installing cable trays! In this video, we'll explore the different types of cable trays available and provide detailed instructions for their installation.

[Contact Us](#)

### Cable Trays Installed Vertical In A Different Manner , Eng-Tips

But since the cable ties are not needed to maintain cable position, they don't tend to get over tightened by gorilla installers. If you just turn a horizontal tray on its side, the ties are all that

[Contact Us](#)



## Contact Us

---

For datasheets, pricing, or custom fiber access solutions, please visit:  
<https://www.frindel.es>