

Can a 22mm cable be run in a cable tray





Overview

Due to their exposure to the open air because of the cable trays, the wires contained within need a very durable outer covering. The regulations dictate that the cables must either be Type TC (also known as Tray Rated) or must be metal-armored (Type MC). This is a description of how to select, install, and support these metal or plastic frames, on which electrical wires are installed. Wire Mesh Cable Trays are mainly used for telecommunication and fiber optic cables.



Can a 22mm cable be run in a cable tray



NEC Article 392 Guide: Ensuring Compliance for Cable

Can any cable be used in a tray? The short answer is no. Due to their exposure to the open air because of the cable trays, the wires contained within

[Contact Us](#)

Cable Support Distances

The cable should not be allowed to have a straight vertical run without the addition of a tension relieving section. This normally involves the cable having a short horizontal section (at least 1 metre) included



[Contact Us](#)

Cable Tray Technical Guide A practical guide to product selection and

SOLID-BOTTOM CABLE TRAY Providing additional cable protection, solid-bottom cable tray is sometimes preferred to support and protect numerous small instrumentation and control cables.

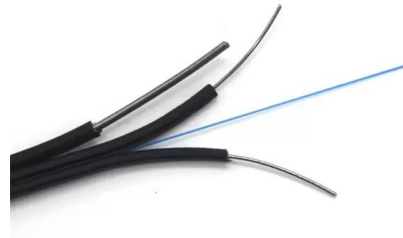
[Contact Us](#)



Cable Tray Capacity Calculator

This calculator determines the maximum number of cables that can be safely housed within a cable tray based on its dimensions and the cross-sectional

[Contact Us](#)



Cable Tray Systems: Requirements and Best Practices

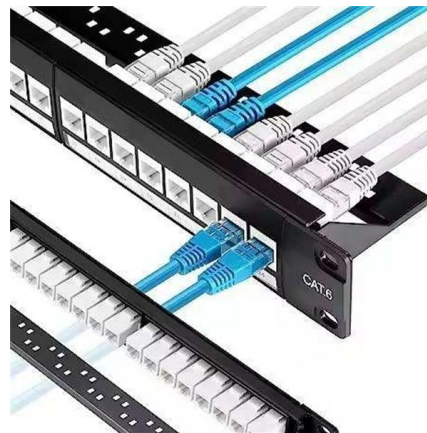
Comprehensive guide to cable tray systems requirements: tray types, materials, loading, supports, bonding, routing, and best practices for safe electrical cable management.

[Contact Us](#)

Best Practices for Installing Cables in Trays

Learn the best practices for installing cables in trays. This guide covers essential steps, technical requirements, and key details for efficient cable

[Contact Us](#)



Cable Tray Technical Guide A practical guide to product selection and

Cable tray installed in a hazardous location must contain only those cables that are appropriate for this type of environment as defined in Chapter 5 of the NEC.

[Contact Us](#)



How Many Cables Can a Cable Tray Hold? A

During the design of a cable management system, one of the most important questions is the cable tray capacity. The capacity does not depend on

[Contact Us](#)



A Comprehensive Guide To Tray Cables

Tray cables follow a separate group of UL and NEC specifications and are more sturdy and resistant to heavy abrasion compared to other

[Contact Us](#)



Installation Of Cable In Cable Trays: NEC, Safety

Installation of Cable in Cable Trays ensures proper routing, cable management, NEC compliance, grounding, fire safety, and load capacity.

[Contact Us](#)



Cable Tray Size and Dimensions: How to Choose the

Learn how to calculate the perfect cable tray size and dimensions for your electrical project. This guide covers load capacity, fill ratios, and industry

[Contact Us](#)



How Many Cables Can a Cable Tray Hold? A

How Many Cables Can a Cable Tray Hold? A Comprehensive Guide During the design of a cable management system, one of the most important

[Contact Us](#)



What is Exposed Run Tray Cable?

So, what exactly do the regulations say? According to the NEC, exposed run cables must be installed between a cable tray and any electrical

[Contact Us](#)

Explaining NEC Article 392 on Cable Trays

NEC Article 392 explains cable trays, their components, appropriate wiring methods for cable trays, and instances where they are and are not

[Contact Us](#)



Cable Tray Support Spacing: Key Guidelines Explained

Explore the essential cable tray support spacing requirements for safe and efficient installations. Learn NEC guidelines for perforated, ladder, and wire

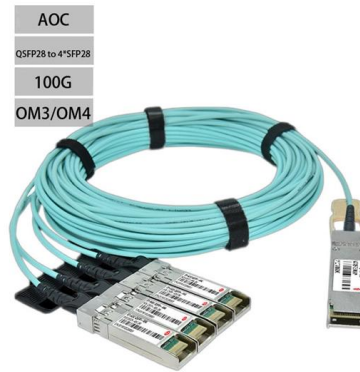
[Contact Us](#)



Tray-Rated Cable 101

Tray cable is applied in many different industrial plant expansions, automotive plants, tray wiring, wind energy, machine tool, forestry equipment, oil and petrochemical equipment, cold temperature

[Contact Us](#)



A Comprehensive Guide to Tray Cable

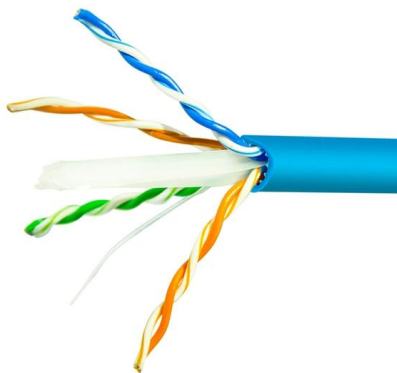
Since cable trays do not fully enclose cables, which would be the case with cable raceway or ducts, tray cable must conform to strict requirements to

[Contact Us](#)

AWG

Amp ratings vs. US AWG wire gauge. The table below indicates the current ratings of PVC-insulated single and multicore wiring cables. Be aware that the current load

[Contact Us](#)



Cable Tray Size Chart and Selection Guide

Shallow trays of 50mm or less are limited to single-layer cable arrangements with small-diameter cables, while 100mm or deeper trays can accommodate multiple layers or large-diameter

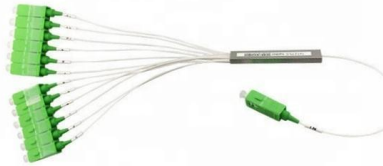
[Contact Us](#)



The Ultimate Guide to Tray Cables: Types, Applications and

When it comes to powering, automating and protecting facilities?from factories and petrochemical plants to data centers and high-rises?the right cable makes all the difference. Among the various

[Contact Us](#)



Cable Tray Capacity Calculator

A Cable Tray Capacity Calculator is an essential tool for electrical engineers, contractors, and project managers involved in the installation and

[Contact Us](#)

Cable Tray Questions , Cable Tray Institute

This can be accomplished by a separate cable tray system or by a divider within a cable tray. NEC section 318-5 (e) indicates that multiconductor cables rated 600 volts or less are permitted in the



[Contact Us](#)



A Guide to Installing and Supporting Electrical Cable Trays

Yes, an electrical cable tray can serve as an EGC if it meets all bonding and grounding requirements outlined in NEC 392.60. The system must be identified

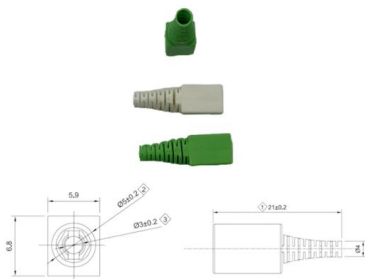
[Contact Us](#)

Cable Tray Fill Rules (NEC 392)



Common industry practice (driven by ISA and IEEE standards, not NEC) is to run power cables and instrument/signal cables in separate trays,

[Contact Us](#)



Tray Cable Size Chart: Choosing the Right Gauge

Choosing the correct tray cable gauge is a balance of performance, safety and compliance. The tray cable size chart offers a solid starting point, but realworld conditions--like run

[Contact Us](#)

Free Cable Tray Fill Calculator , NEC & IEC Compliant Sizing , Shielden

Easily calculate cable tray fill ratios with our free tool. Supports mixed cable sizes, NEC 40% rules, and metric/imperial units. Download your PDF report instantly.

[Contact Us](#)



Cable Tray Size Calculation for Project Engineers

Cable tray size calculation is important for ensuring safe cable installation, proper heat dissipation, and enough spare capacity for future

[Contact Us](#)



Cables Allowed in Tray

Tray can be manufactured in various types of material including aluminum, steel and fiber and other nonmetallic materials. Cable tray allows for the clean organization and routing of cable and offers

[Contact Us](#)



Contact Us

For datasheets, pricing, or custom fiber access solutions, please visit:
<https://www.frindel.es>