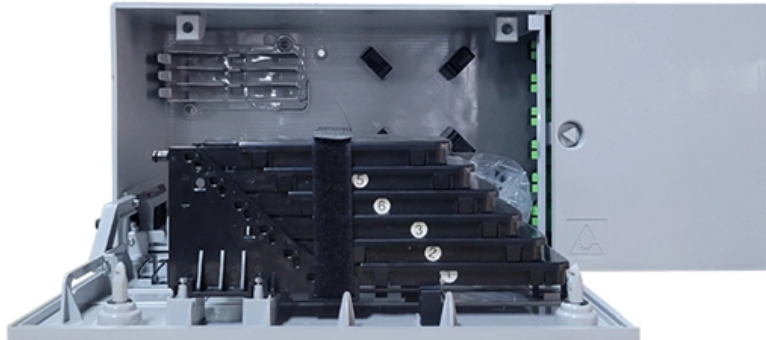


Cable trays in the top-floor elevator room





Cable trays in the top-floor elevator room



Method Statement installation of Cable Trays and Ladders

This method statement covers the site installation of the cable tray & ladders and the requirements of checks to be carried out.

[Contact Us](#)

Types of Cable Trays - Purpose, Advantages,

Cable tray is alternatives to wire ways and electrical conduits, which completely enclose cables. Study types of cable trays, purpose, advantages.

[Contact Us](#)



Cable Tray SHIB NAL

Cable trays are not raceways, but they are treated as a structural component of a facility's electrical system. Cable trays are a part of a planned cable management system to support, route, protect and

[Contact Us](#)

Best Practice Guide to Cable Ladder and Cable Tray Systems

This publication is intended as a practical guide for the proper and safe* installation of cable ladder systems, cable tray systems, channel support systems and associated supports.



Best practices for underfloor cable management

All cables should be supported in cable tray that is run overhead, above the equipment or under the raised floor. This paper addresses the routing of cable pathway beneath a raised floor to maintain

[Contact Us](#)

Overhead Cable Management: Cable Runway vs. Cable

Overhead Cable Management Products from Enconnex Enconnex has partnered with Liberty to deliver best-in-class cable runway and wire mesh

[Contact Us](#)



Cable Tray Installation Method Statement

Below is the detailed cable tray installation method statement not only for cable tray but also applicable for GI ladder and trunking for indoor and outdoor applications

[Contact Us](#)



Cable Pathways: A Data Center Design Guide and Best

An underfloor cable tray is a product used primarily in data centers. The concept is the same as the overhead support apparatus. However, when using

[Contact Us](#)



Cable tray vs cable basket vs cable ladder vs cable

This article will discuss the four most common types of cable containment and their uses: cable tray, cable basket, cable ladder, and cable

[Contact Us](#)

Cable Tray Questions , Cable Tray Institute

A contractor has just installed a new phone system at my location and he utilized cable trays in the switch room. I did not see any deliberate attempt to ground the system.

[Contact Us](#)



Restrictions on Circuits in stairways and elevator rooms

620.37 Wiring in Hoistways, Machine Rooms, Control Rooms, Machinery Spaces, and Control Spaces. (A) Uses Permitted. Only such electrical wiring, raceways, and cables used directly

[Contact Us](#)



Elevator Traveling Cable

Elevator traveling cable is a vital link between the elevator car and controller. In conventional elevators, all power and signal information is transmitted through the traveling cable.

[Contact Us](#)



Cable tray

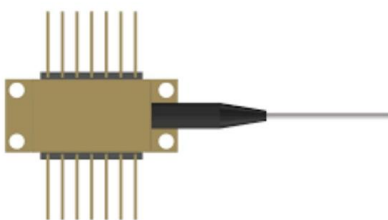
In the electrical wiring of buildings, a cable tray system is used to support insulated electrical cables used for power distribution, control, and communication.

[Contact Us](#)

Cable Trays , Underfloor Raised Access Floor System Organization

Cable trays keep wires in place while allowing air flow in raised access floor systems. Our system installs in seconds without tools. Ideal for data centers.

[Contact Us](#)



GUIDE CABLE TRAYS TECHNICAL

NEMA VE 1-2017 Specifies requirements for metal cable trays and associated fittings designed for use in accordance with the rules of Canadian Electrical Code, Part I and the National Electrical Code®

[Contact Us](#)



Cable Tray Systems in Ducts, Plenums and Other Air Handling Space

Cable Tray Systems in Ducts, Plenums and Other Air Handling Space The objective of this article to provide clear information as to the use of cable tray in those areas covered by Section 300-22 of the

[Contact Us](#)



Code requirements for elevator machine room wires? This is a

27 votes, 49 comments. 14K subscribers in the Elevators community. Everything related to elevators and escalators.

[Contact Us](#)

Code requirements for elevator machine room wires? This is a

I think a state inspector would consider this a trip hazard for your disconnect, they should have run conduit from the top of the disconnect to the ceiling and down to the controller and then changed

[Contact Us](#)



Cable Tray Systems: Requirements and Best Practices

Cable tray systems are structural components used to support insulated conductors and control, instrumentation, and communication cables. They are typically installed overhead, along

[Contact Us](#)



Intrabuilding riser cable-

Riser cable, first named thus because it "rises" between the floors of a multistory building, is also called backbone cable. It is the primary conduit of a premises

[Contact Us](#)



8.5.5 Cable types under access floors 8.6 Overhead cable trays

Overhead cable tray systems may alleviate the need for access floors in data centers that do not employ floor-standing systems that are cabled from below. Overhead cable trays may be installed in several

[Contact Us](#)

Underfloor Cabling Best Practices , Winnie Industries

Modern data centers rely heavily on raised-floor cable pathways, underfloor cable management systems, and plenum-rated routing methods to

[Contact Us](#)



MPO-MPO Low Smoke Halogen Free Sheath
Multimode 10 Gigabit 24 pole OM3
Insertion loss <0.35dB Return loss >50dB

Cable Tray Spacing Standards for Installation and Safety

Key Factors Impacting Cable Tray Spacing Understanding cable tray spacing is key to meeting safety regulations and maintaining system

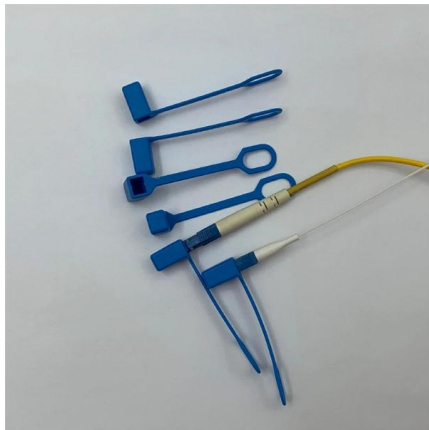
[Contact Us](#)



8.5.5 Cable types under access floors 8.6 Overhead cable trays

8.6 Overhead cable trays 8.6.1 General Overhead cable tray systems may alleviate the need for access floors in data centers that do not employ floor-standing systems that are cabled from below.

[Contact Us](#)



Firestopping Requirements for Cable Trays and

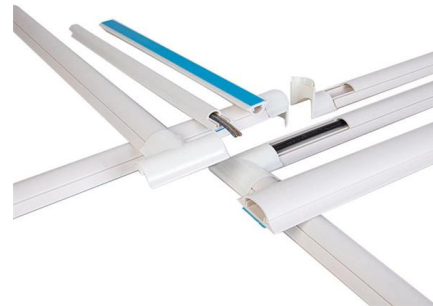
Where cables pass through shafts, walls, slabs, or enter electrical panels or cabinets, openings shall be tightly sealed with firestopping materials in

[Contact Us](#)

Access Flooring Cable Tray Systems

Access flooring cable tray systems. The smarter way to build computer rooms & smart office buildings. Designed, patented and engineered with innovative

[Contact Us](#)



Cable Tray Technical Guide A practical guide to product selection and

A practical guide to product selection and installation This guide for engineers and installers has been developed by ABB as a practical reference regarding cable tray characteristics, installation, and

[Contact Us](#)



Contact Us

For datasheets, pricing, or custom fiber access solutions, please visit:
<https://www.frindel.es>