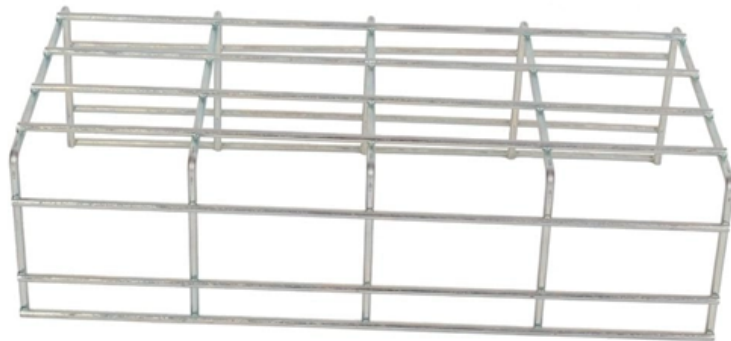




**FRINDEL OPTICS**

# **Cable tray suspension rod process flow diagram**





## Cable tray suspension rod process flow diagram

---

### An Extensive Library of Self-Developed Products



### Best Practice Guide to Cable Ladder and Cable Tray Systems

This guide covers cable ladder systems, cable tray systems, channel support systems and associated supports intended for the support and accommodation of cables and possibly other electrical

[Contact Us](#)

### Conductor Manufacturing Process Flow Chart

This document outlines the process for manufacturing electrical conductors. It notes that aluminum clad steel wire will be procured from imported sources. The



[Contact Us](#)



### A Guide to Installing and Supporting Electrical Cable Trays

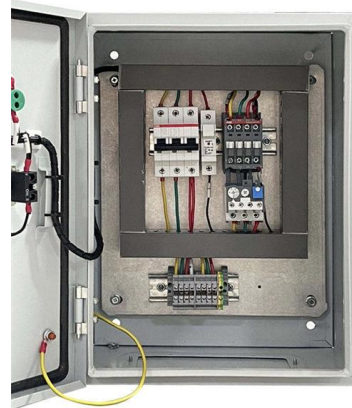
A professional guide to installing electrical cable tray systems per NEC Article 392. Covers support, securing cables, and fill calculations.

[Contact Us](#)

### Cable Tray Fabrication Method Statement

METHOD OF STATEMENT Cable tray fabrication and installation - Free download as Word Doc (.doc), PDF File (.pdf), Text File (.txt) or read online for free. The

[Contact Us](#)



### Routing systems with centre suspensions for

Routing system with centre suspension: The GRM 55 200 mesh cable tray The GR-Magic mesh cable tray has also been tested as a cable-specific support structure

[Contact Us](#)

### ITER Cabling Handbook

This document deals with cables trays, cables and connector installation and segregation, cable trays earthing and E.M.C. directives. These rules shall be applied in the cabling engineering workflow for

[Contact Us](#)



### Microsoft Word

All tray items whether stored outside or indoors, should be placed on sufficient support, to enable future mechanical lifting. Trays and fittings should be stacked by their physical dimensions (width) and type.

[Contact Us](#)

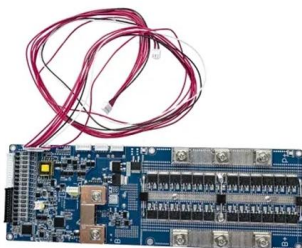
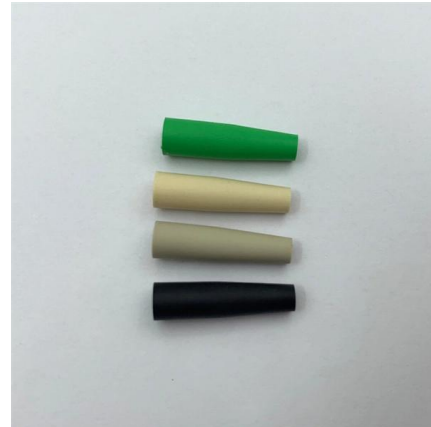




## Cable tray manual

Nearly every aspect of cable tray design and installation has been explored for the use of the reader. If a topic has not been covered sufficiently to answer a specific question or if additional information is

[Contact Us](#)



## Cable support system

Using cable trays in the recognised OBO quality means that all the requirements for electrical installations on the construction site can be mastered professionally and safely.

[Contact Us](#)

## Cable Tray Technical Guide A practical guide to product selection and

Cable tray is considered to be a system. It must provide continuous support for cables, and the electrical continuity of the cable tray system must be maintained.

[Contact Us](#)



## Cable Tray and Conduit Installation Method Statement

Step-by-step cable tray and conduit installation method with safety, quality and inspection procedures as per IEEE standards.

[Contact Us](#)



## Cable Tray Manufacturing: A Simple Guide to the Process

Explore the cable tray manufacturing process, types of cable trays, and important factors. Learn how it all works in an easy-to-understand guide.

[Contact Us](#)



## Beama Best Practice Guide , Installation Of The System , Cable

The following recommendations are intended to be a practical guide to ensure the safe and proper installation of cable ladder and cable tray systems and channel support and other support systems.

[Contact Us](#)

## Cable tray manual

All the technical information developed by the 1973 NEC® Technical Subcommittee on Cable Tray for Article 318 - Cable Trays was based on cable trays with side rails and this technical information is still

[Contact Us](#)



## CABLE TRAY SYSTEMS GUIDE

Steel Ladder System Hubbell's NEXTFRAME® Ladder Tray is the effective and widely used cable runway that supports and delivers bundles of cable between cabinets, racks, and closets, along

[Contact Us](#)





## PROCESS FLOW CHART For ACSR Conductor

PROCESS FLOW CHART For ACSR Conductor  
Refer : Process Flow Chart : Process Flow Chart for Aluminium Wire Rod for In-house Manufacturing of Aluminium Rod

[Contact Us](#)



## Complete cable tray manual for electrical engineers and

Complete cable tray manual for electrical engineers and designers (on photo: power cable management ladder tray systems assembled aluminum cable tray ladder)

[Contact Us](#)



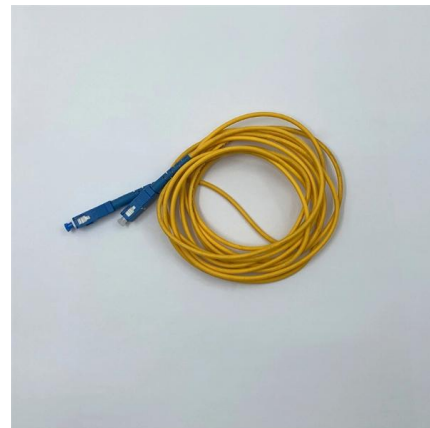
## Typical Design Philosophy of Cable Trays for Power



## Support methods

3 - TabLok center-hung Center-hung configurations are quick and easy when you use the pre-assembled TabLok center-hung assembly. Lock tray into position on the TabLok profile and secure a

[Contact Us](#)



## Annex I

Cable tray sections must be in accordance with the cable types and/or the number of cables installed in it, respecting the maximum filling ratio, according to the cable tray type.

[Contact Us](#)



Cable tray system shall be used for laying of MV and LV power, control, instrumentation and special cables in the Power Plant. Cable trays shall be

[Contact Us](#)



### Cable Tray for PDF

Cable trays are capable of supporting all types of wiring such as high voltage power lines, power distribution cables, sensitive control wiring, telecom wiring and optical cables.

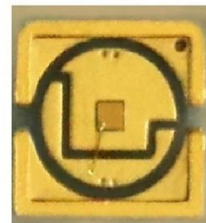
[Contact Us](#)



### GUIDE CABLE TRAYS TECHNICAL

NEMA VE 1-2017 Specifies requirements for metal cable trays and associated fittings designed for use in accordance with the rules of Canadian Electrical Code, Part I and the National Electrical Code®

[Contact Us](#)



Motor protection controller



### Cable Tray Trunking & Ladder Installation Method for

Resources For Electrical & Electronic Engineers Cable Tray Trunking & Ladder Installation Method for Projects The purpose of this article is to define the

[Contact Us](#)



## Understanding the Anatomy of a Suspension Bridge

A suspension bridge is a type of bridge that is supported by cables suspended from towers and anchored at each end. It is one of the most common types.

[Contact Us](#)



## Guide to cable support systems

The mesh cable trays are suitable for the installation of power cables and cables in various areas of application. The grid spacings mean that cables can be inserted and run out in various directions.

[Contact Us](#)



## Cable Manufacturing Process Flow Chart

The document outlines the process flows for producing four types of cable support systems: cable tray, cable ladder, cable trunking, and support systems.

[Contact Us](#)



## Cable Tray Erection Procedure Guide

This document outlines the procedure for erecting cable trays and covers at a power plant. It details the various types and sizes of cable trays to be used,

[Contact Us](#)





## **Cable Tray Technical Guide A practical guide to product selection and**

A practical guide to product selection and installation This guide for engineers and installers has been developed by ABB as a practical reference regarding cable tray characteristics, installation, and

[Contact Us](#)



## **Contact Us**

---

For datasheets, pricing, or custom fiber access solutions, please visit:  
<https://www.frindel.es>