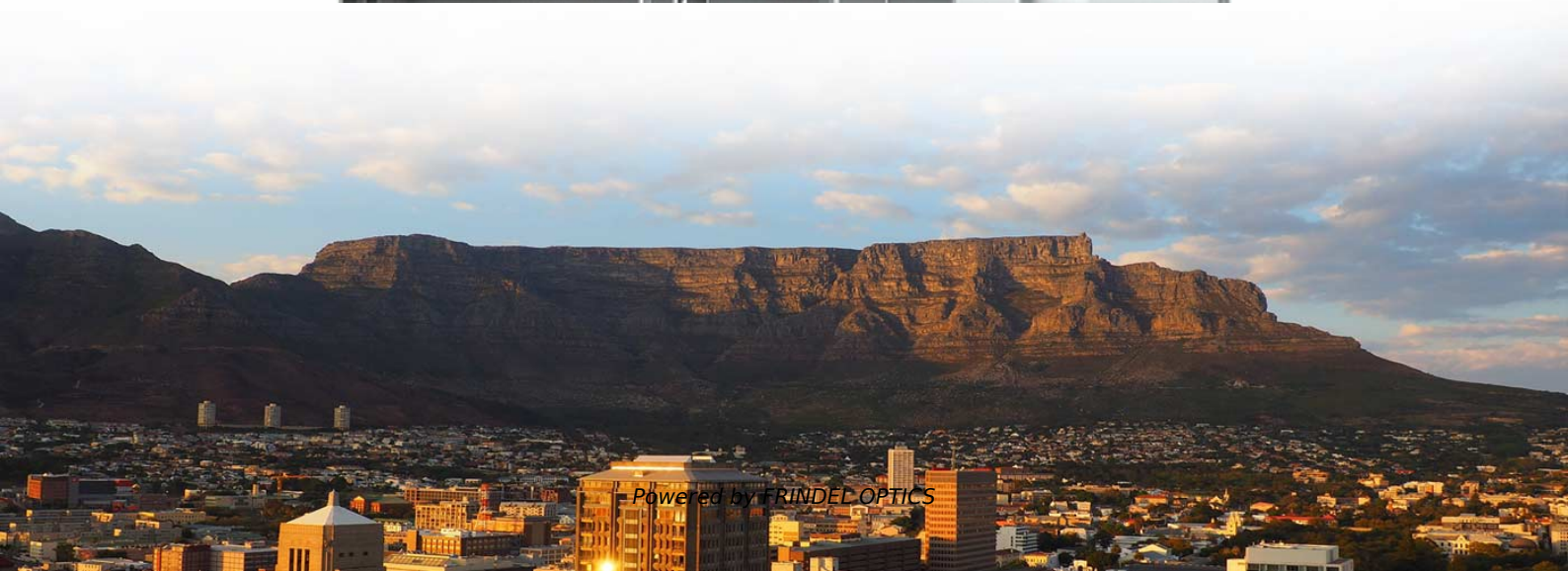


Cable tray sealing construction steps





Cable tray sealing construction steps



Cable Tray and Conduit Installation Method Statement

Step-by-step cable tray and conduit installation method with safety, quality and inspection procedures as per IEEE standards.

[Contact Us](#)

Cable Tray Installation Method Statement

Ensure the gaps between the trays which are mounted in tires are sufficient for the cable laying as per the approved installation details drawings. Cable Ladder and

[Contact Us](#)



Firestopping Requirements for Cable Trays and

Technical guide to firestopping cable tray and slab penetrations in electrical shafts; specifies materials, packing limits, waterstop heights and

[Contact Us](#)

Cable and pipe seals

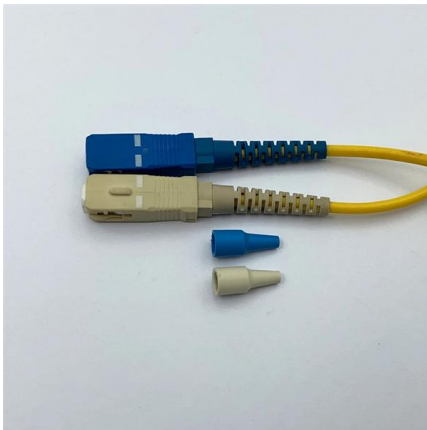
More than a firestop the roxtec sealing system for cables and pipes protects against fire - but also against gas, water, and several other risk factors. our solutions are easy to use and help you ensure



Understanding Cable Tray Grounding: A

Cable tray grounding is an indispensable aspect of electrical installations that plays a pivotal role in ensuring safety, reliability, and efficiency. It

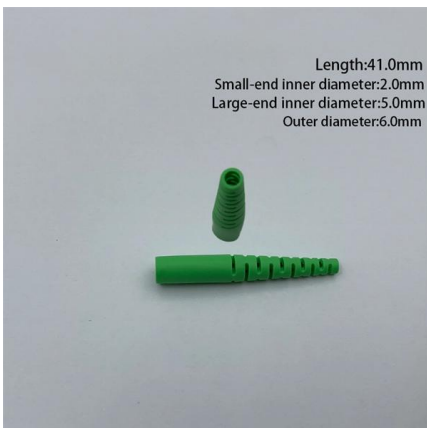
[Contact Us](#)



How to install Cable Trays - Best Guide in 2026

Step-by-step on-site guide: learn how to plan, mark, support, and install cable trays correctly, from shop drawing approval to final checks.

[Contact Us](#)



Fire sealing cable penetrations

Fire sealing of cable penetrations is required by building regulations. In case of a fire, these cable services will melt and leave openings in the walls or floors, allowing

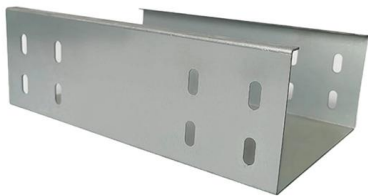
[Contact Us](#)



Cable Tray Installation Method Statement

This document provides a method statement for installing cable trays and trunking systems for building electrical services. It outlines 14 steps for the installation

[Contact Us](#)



Cable Tray System Explained Animated Installation Guide , FK

Watch the step-by-step process of cable routing, support fixing, and tray alignment. Ideal for electrical engineers, technicians, and construction teams. Animation makes learning easy and effective!

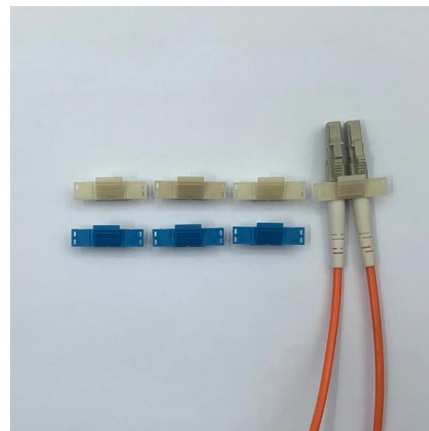
[Contact Us](#)



Instrumentation Cable Tray Installation Checklist and

Step-by-step instrumentation cable tray installation guide with safety tips, standards, inspections, and downloadable Excel checklist.

[Contact Us](#)



Technical Specification for Cable tray installation and cable laying work

Approval of IPR shall be obtained for site preparation and marking the cable tray routes and locations of cable tray support before proceeding with the erection and installation work.

[Contact Us](#)



A Guide to Installing and Supporting Electrical Cable Trays

This guide covers the critical steps, from selecting the right electrical cable tray and performing accurate cable fill calculations to managing a safe cable pull through

[Contact Us](#)



Cable tray manual

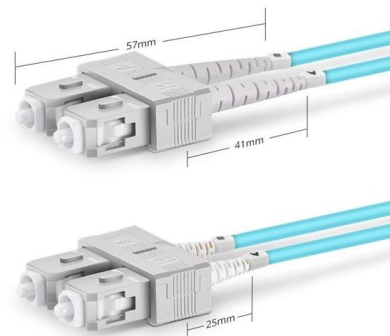
These documents: ANSI/NEMA VE-1, Metal Cable Tray Systems; NEMA VE-2, Cable Tray Installation Guidelines; and NEMA FG-1, Non Metallic Cable Tray Systems, are an excellent industry resource in

[Contact Us](#)

Mastering Cable Tray Installation , Step-by-Step Guide for a Seamless

Learn how to install cable trays correctly. Get the ultimate step-by-step guide on setting up a seamless and reliable cable management system.

[Contact Us](#)



Duplex SC UPC

Cable Tray Trunking & Ladder Installation Method Statement

Below is a complete method statement for installation of cable tray, cable trunking and cable ladders in compliance with project specifications and approved material submittals. Tool Required:

[Contact Us](#)





Cable Entry Seals: A Complete Beginner's Guide

Cable entry seals play a crucial role in protecting electrical systems and enclosures from environmental hazards like dust, moisture, and temperature changes.

[Contact Us](#)



Step-by-Step Guide to Cable Tray Barrier Installation

Learn the essential steps for cable tray barrier installation, including pre-planning, securing supports, and ensuring compliance with industry

[Contact Us](#)



Best Practice Guide to Cable Ladder and Cable Tray Systems

This guide covers cable ladder systems, cable tray systems, channel support systems and associated supports intended for the support and accommodation of cables and possibly other electrical

[Contact Us](#)



Cable Tray Technical Guide A practical guide to product selection and

Cable tray is considered to be a system. It must provide continuous support for cables, and the electrical continuity of the cable tray system must be maintained.

[Contact Us](#)

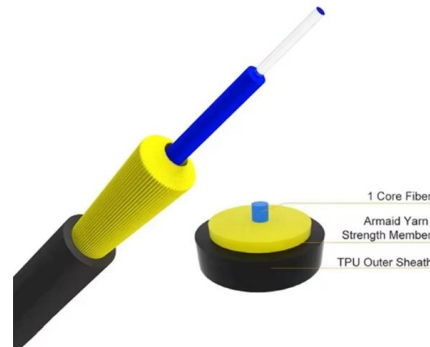




Cable Tray Technical Guide A practical guide to product selection and

Cable Tray Technical Guide A practical guide to product selection and installation This guide for engineers and installers has been developed by ABB as a practical reference regarding cable tray

[Contact Us](#)



Cable Tray System Explained Animated Installation Guide , FK

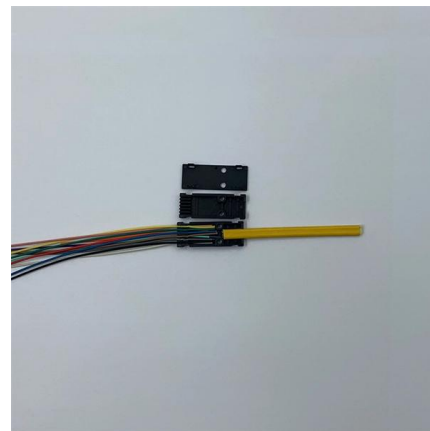
Watch the step-by-step process of cable routing, support fixing, and tray alignment. Ideal for electrical engineers, technicians, and construction teams. Animation makes learning easy and

[Contact Us](#)

Cable Tray and Ladder Installation Method

Method Statement for Cable Trays & Cable Ladders Installation - Free download as Word Doc (.doc), PDF File (.pdf), Text File (.txt) or read online for free. This

[Contact Us](#)



Method Statement installation of Cable Trays and Ladders

This method statement covers the site installation of the cable tray & ladders and the requirements of checks to be carried out.

[Contact Us](#)



Cable Tray Installation Method Statement

Below is the detailed cable tray installation method statement not only for cable tray but also applicable for GI ladder and trunking for indoor and outdoor applications

[Contact Us](#)



How Does Cable Tray Installation Work?

Explore Harbor Energy Solutions' guide on cable tray installation, detailing benefits, considerations, and step-by-step processes.

[Contact Us](#)

CABLE TRAY INSTALLATION PROCEDURE

On vertical cable trays and on edgewise - horizontal cable trays, each cable shall be fixed with 20mm wide stainless steel strips (two per meter). On horizontal cable

[Contact Us](#)



Cable Tray Installation

Whether you're building a commercial setup or upgrading an industrial plant, proper cable tray installation ensures neat wiring, safe access, and easy maintenance. But before you lay the first tray

[Contact Us](#)



Contact Us

For datasheets, pricing, or custom fiber access solutions, please visit:
<https://www.frindel.es>