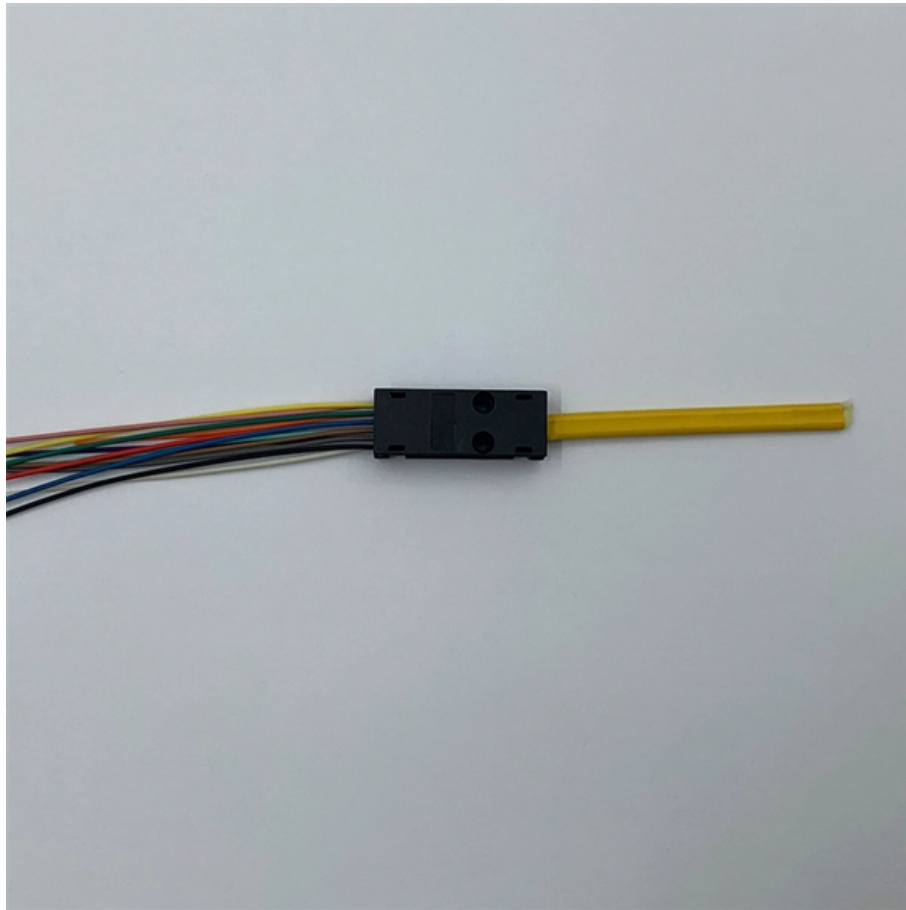


Cable tray partially crosses the bridge





Cable tray partially crosses the bridge



Best Practice Guide to Cable Ladder and Cable Tray Systems

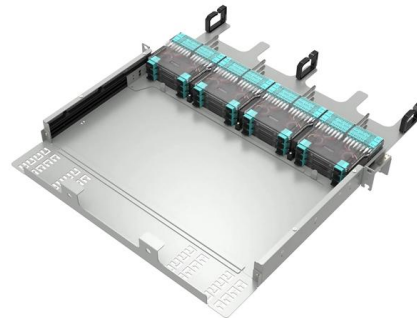
This guide covers cable ladder systems, cable tray systems, channel support systems and associated supports intended for the support and accommodation of cables and possibly other electrical

[Contact Us](#)

Core Principles for Electrical and Instrumentation Cable

In industrial settings, electrical and instrumentation (E& I) cable trays or bridge racks play a critical role in organizing and supporting power, control, and signal cables

[Contact Us](#)



Route piping over or under cable trays? , Eng-Tips

Does the radiant heat from piping impact routing underneath cable trays? This is just a general question because I came across another piece of

[Contact Us](#)

Conductors/Cables passing through a cable tray (without entering the

Cable trays in industrial establishments can have other cables and raceways attached to the bottom but it only talking about in parallel with the tray. Raceways on top of a tray could block the



Practices for grounding and bonding of cable trays

Grounding and bonding of cable trays There are three wiring options for providing an EGC in a cable tray wiring system: An EGC conductor in or on

[Contact Us](#)

GUIDE CABLE TRAYS TECHNICAL

NEMA VE 1-2017 Specifies requirements for metal cable trays and associated fittings designed for use in accordance with the rules of Canadian Electrical Code, Part I and the National Electrical Code®

[Contact Us](#)



How to Fix Common Cable Management Issues using

This comprehensive guide investigates the most frequent wire management challenges faced in real-world setups and demonstrates how the

[Contact Us](#)

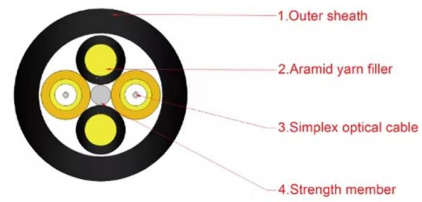




Beama Best Practice Guide , Installation Of The System , Cable

The following recommendations are intended to be a practical guide to ensure the safe and proper installation of cable ladder and cable tray systems and channel support and other support systems.

[Contact Us](#)



Common Cable Tray Failures and How to Resolve Them

Learn about common cable tray failures, their causes, and practical solutions for ensuring the longevity and safety of your cable tray system, including

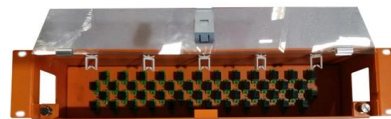
[Contact Us](#)



Cable Tray Failures: Types, Causes, and Prevention

However, like any other infrastructure, cable trays are prone to failures that can result in serious safety hazards, financial losses, and downtime.

[Contact Us](#)



Cable Tray Technical Guide A practical guide to product selection and

Cable tray installed in a hazardous location must contain only those cables that are appropriate for this type of environment as defined in Chapter 5 of the NEC.

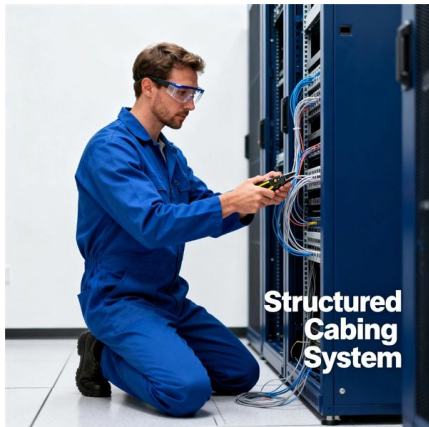
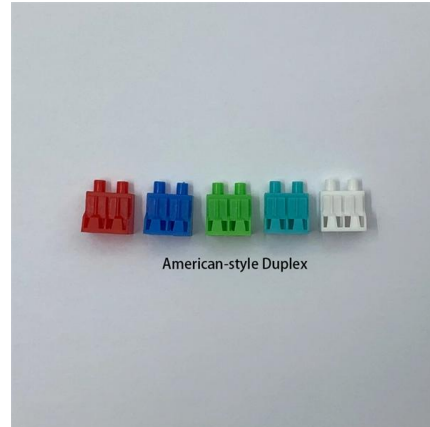
[Contact Us](#)



Safety Distances Between Cable Trays and Pipes

Learn about the importance of cable trays and pipes safety distances in ensuring system reliability. Explore standards, factors, and measures to

[Contact Us](#)



Cable tray manual

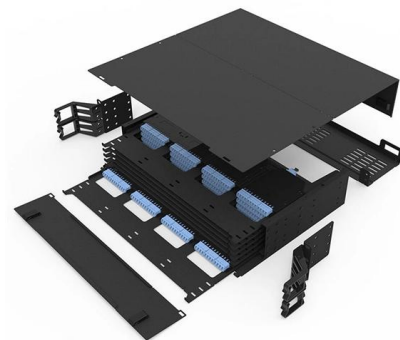
Instead of large conduits, cable channel may be used very effectively to support cable drops from the cable tray run to the equipment or device being serviced and is ideal for cable tray runs involving a

[Contact Us](#)

Cable Tray Spacing Standards for Installation and Safety

The Importance of Cable Tray Spacing in Electrical Infrastructure Cable tray spacing is a critical aspect of electrical infrastructure, influencing both

[Contact Us](#)



Behaviour of Partially Earth-anchored Cable-stayed Bridge with

ABSTRACT Behaviour of Partially Earth-anchored Cable-stayed Bridge with Crossing Cables of Different Side-to-Main Span Ratios Motasem AISayed ain span length of cable-stayed bridges while

[Contact Us](#)



How is the cable tray connected at different angles?

The interface should be flat, free of distortion, bulge and depression, and the half-round head galvanized bolt for connection should be on the inside of

[Contact Us](#)



Installation Of Cable In Cable Trays: NEC, Safety

Installation of Cable in Cable Trays ensures proper routing, cable management, NEC compliance, grounding, fire safety, and load capacity.

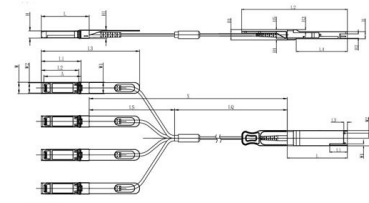
[Contact Us](#)



Complete cable tray manual for electrical engineers and

Complete cable tray manual for electrical engineers and designers (on photo: power cable management ladder tray systems assembled aluminum cable tray ladder)

[Contact Us](#)



Unit mm

OSFP28	L	L1	L2	L3	L4	W	W1	W2	H	H1	H2	H3	H4	H5	H6
Max	72.2	-	328	4.35	61.4	18.45	-	6.2	8.6	12.4	5.35	2.5	1.6	2.0	-
Type	72.0	-	4.25	61.2	18.35	-	8.5	12.2	5.2	2.3	1.5	1.8	6.55	-	-
Min	68.8	16.5	324	4.05	61.0	18.25	2.2	5.8	8.4	12.0	5.05	2.1	1.3	1.6	-

SFP28	L	L1	L2	L3	W	W1	W2	H	H1	A
Max	57.6	47.7	44.55	119.9	13.8	14.0	12.3	8.7	10.3	45.25
Type	57.4	47.5	44.35	117.9	13.55	13.8	12.1	8.5	10.1	45
Min	57.2	47.3	44.15	115.9	13.3	13.6	11.9	8.4	9.9	44.65



Introduction to 3 types of cable bridges and their

In our life, there is a common cable tray cable trough, tray type, and ladder. Here are the characteristics and uses of these three types of bridges with understanding.

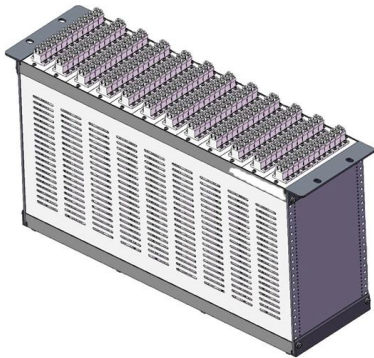
[Contact Us](#)



Hxb300Ez

Junction bridges keep cables separated at tees and crosses in Cablofil cable management for optimum network signal integrity. The unique design creates

[Contact Us](#)



Cable tray manual

Nearly every aspect of cable tray design and installation has been explored for the use of the reader. If a topic has not been covered sufficiently to answer a specific question or if additional information is

[Contact Us](#)



Cable Tray Installation Errors And



Cable Tray Technical Guide A practical guide to product selection and

Cable Tray Technical Guide A practical guide to product selection and installation This guide for engineers and installers has been developed by ABB as a practical reference regarding cable tray

[Contact Us](#)



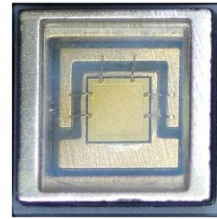
A Guide to Installing and Supporting Electrical Cable Trays

A professional guide to installing electrical cable tray systems per NEC Article 392. Covers support, securing cables, and fill calculations.

[Contact Us](#)

Learn how to identify, resolve, and prevent cable tray installation errors. This guide provides actionable tips and insights to ensure efficient

[Contact Us](#)



CABLE TRAYS GENERAL INFORMATION AND

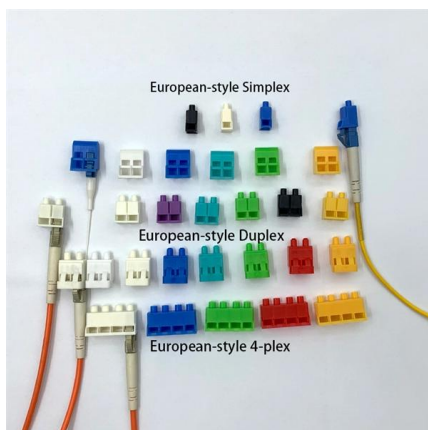
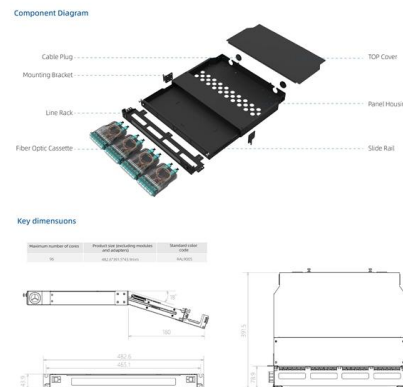
Using cable trays as walkways can cause personal injury and also damage cable tray and installed cables. Performances of cable tray systems are dependent on

[Contact Us](#)

How to Install Cable Tray: A Comprehensive Guide to Different Cable

Welcome to our step-by-step guide on installing cable trays! In this video, we'll explore the different types of cable trays available and provide detailed instructions for their installation.

[Contact Us](#)



What are the defects of the cable tray? the maintenance items of the

For the light cable tray, the dynamic load is generally not considered, that is, people are not allowed to stand on the bridge. If the station person needs to be considered, the span should be

[Contact Us](#)

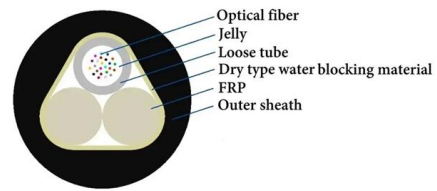
B-Line series Cable Tray Design



Considerations

Available in 3, 4, and 6-inch widths with ventilated or solid bottoms, channel cable tray is ideal for smaller instrumentation cables and cable tray runs involving a small number of cables.

[Contact Us](#)



Contact Us

For datasheets, pricing, or custom fiber access solutions, please visit:
<https://www.frindel.es>