

Cable tray model and size selection





Cable tray model and size selection

Free Cable Tray Sizing Calculator -- IEC, AS/NZS, NEC, BS



Size cable trays for fill ratio, weight capacity, and conductor grouping. Supports IEC 61537, AS/NZS 3000, NEC 392, and BS 7671 standards.

[Contact Us](#)

Cable Tray Size and Dimensions: How to Choose the

Learn how to calculate the perfect cable tray size and dimensions for your electrical project. This guide covers load capacity, fill ratios, and industry

[Contact Us](#)



Cable Tray Technical Guide A practical guide to product selection and

Cable tray length is selected based on the load to be supported, the distance between the supports (also referred to as the span), and handling and installation constraints.

[Contact Us](#)



Cable Tray Size Chart and Selection Guide

Selecting the appropriate electrical cable tray dimensions is a critical decision that directly impacts the safety, efficiency, and longevity of any industrial or commercial electrical installation.



The Ultimate Guide to Selecting the Right Cable Tray for Your Project

In the intricate world of modern infrastructure and electrical systems, selecting the right cable management solution is pivotal to the success of any project. Cable trays, with their ability to

[Contact Us](#)



Cable Tray Types and Sizes

Explore various cable tray types and sizes for electrical installations. Learn about ladder, perforated, solid-bottom, wire mesh, and channel trays in this complete

[Contact Us](#)



Types of Cable Trays: Ladder, Perforated, Basket, Solid

Explore all types of cable trays--ladder, perforated, basket, solid, and channel. Learn their uses, materials, pros, cons, and key differences.

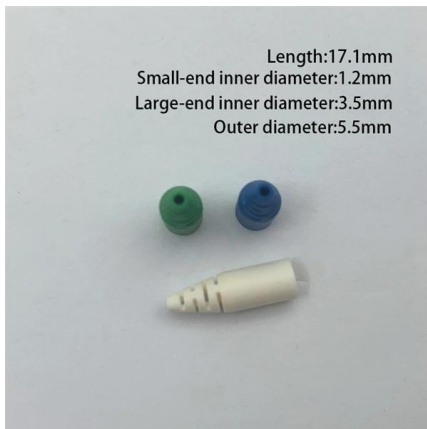
[Contact Us](#)



Cable Tray Technical Guide A practical guide to product selection and

A practical guide to product selection and installation This guide for engineers and installers has been developed by ABB as a practical reference regarding cable tray characteristics, installation, and

[Contact Us](#)



Cable Tray Sizing Calculator , IEC 61537 & NEC 392 Guide

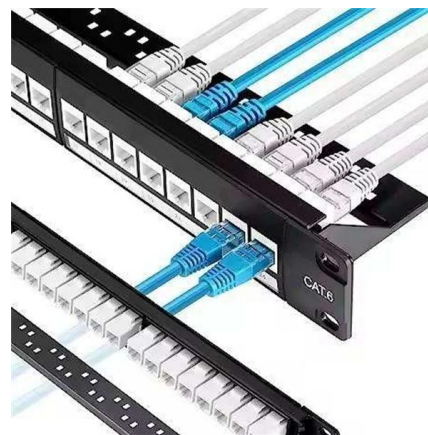
Use this cable tray sizing calculator to check fill %, select tray size, and comply with IEC 61537 & NEC 392 with formulas, example and checklist.

[Contact Us](#)

Cable Tray Sizing

Follow industry standards to select the appropriate cable tray dimensions. Avoid overloading and ensure proper spacing for heat dissipation. Conclusion: Choosing the Perfect Cable

[Contact Us](#)



How to Choose Cable Trays

Master how to choose cable trays with confidence. This complete selection guide covers load assessment, material choices, design best practices, and expert tips

[Contact Us](#)





A Complete Guide to Cable Trays Sizes and Selection

Explore our complete guide to cable trays sizes. Learn how to calculate loads, select types, and navigate UK standards for a certified network installation.

[Contact Us](#)



Cable Tray Dimensions Guide: Standard Sizes, Tray

Explore standard sizes by tray type, understand width and depth limits, and see how to calculate and choose compliant cable tray sizes for real projects.

[Contact Us](#)

Free Cable Tray Sizing Calculator -- IEC, AS/NZS, NEC, BS

The cable tray calculator determines the required tray width and type based on the number and size of cables to be installed, ensuring adequate fill levels and derating compliance.

[Contact Us](#)



Ultimate Guide to Cable Tray Selection - Types,

Learn how to choose the best cable tray system for your needs. Explore types, materials, installation tips, and NEC compliance in this expert guide.

[Contact Us](#)



Calculating Suitable Size of Cable Tray

Cable trays are essential components in electrical installations, providing a safe and organized way to route and support electrical cables. The suitable size of a cable tray is crucial for

[Contact Us](#)



How to Select the Right Electric Cable Tray for Your Application

How do I decide the right size for my electrical cable tray? To determine the load capacity for your electrical cable tray, calculate the total weight of all cables, including any potential future additions,

[Contact Us](#)



Cable Tray Type Selection

Cable Tray Selection Process Steps:- Select Material and Finish Select the Tray Load Class Select the Tray Type Select the Tray Size Select the Fittings Consider Deflection 1 Select Material and Finish

[Contact Us](#)



Cable Tray Size Guide: How to Choose the Right Dimensions

Complete cable tray sizing guide with standard size chart, NEC calculation methods, and real engineering examples. Learn how to select the right cable tray dimensions for your project.

[Contact Us](#)



A Guide to Selecting Cable Trays for Engineering Design

Learn about the essential factors when selecting cable trays for engineering design. Understand load calculations, safety factors, material choice,

[Contact Us](#)



Cable Tray Size Calculation for Project Engineers

Cable tray size calculation is important for ensuring safe cable installation, proper heat dissipation, and enough spare capacity for future

[Contact Us](#)

GUIDE CABLE TRAYS TECHNICAL

NEMA VE 1-2017 Specifies requirements for metal cable trays and associated fittings designed for use in accordance with the rules of Canadian Electrical Code, Part I and the National Electrical Code®

[Contact Us](#)



Cable Tray Size Chart and Selection Guide

Selecting the appropriate electrical cable tray dimensions is a critical decision that directly impacts the safety, efficiency, and longevity of any industrial or commercial electrical installation.

[Contact Us](#)



Contact Us

For datasheets, pricing, or custom fiber access solutions, please visit:
<https://www.frindel.es>