

# Cable tray adjusting rod





## Cable tray adjusting rod

---



### **Best Practice Guide to Cable Ladder and Cable Tray Systems**

This guide covers cable ladder systems, cable tray systems, channel support systems and associated supports intended for the support and accommodation of cables and possibly other electrical

[Contact Us](#)

### **Cable Tray Clips , McMaster-Carr**

Choose from our selection of cable tray clips in a wide range of styles and sizes. Same and Next Day Delivery.

[Contact Us](#)



### **Cable Tray Supports , McMaster-Carr**

These tray systems allow excellent ventilation and prevent sagging while routing. They support up to 280 lbs. per foot (based on a tray support, such as hanging clamps or a hanging bar, every 8 feet).

[Contact Us](#)



## **CABLE TRAY SYSTEMS GUIDE**

Cable Tray Systems Guide HUBBELL Hubbell Wiring Device-Kellems and Hubbell Premise Wiring are divisions of Hubbell Incorporated, a U.S. headquartered manufacturer with over 130 years of



### **I-BEAM Threaded Rod**

I-BEAM Ladder - Threaded Rod Welded aluminum I-beam ladder cable trays are a core solution and an iconic design in the cable tray industry. The I-beam

[Contact Us](#)



### **Support methods**

3 - TabLok center-hung Center-hung configurations are quick and easy when you use the pre-assembled TabLok center-hung assembly. Lock tray into position on the TabLok profile and secure a

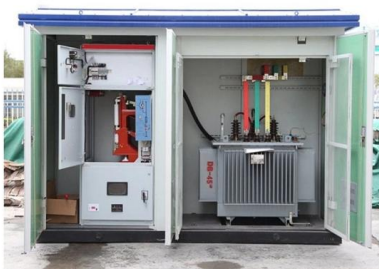
[Contact Us](#)



### **Cable Tray Accesories & Hardware Archives**

1½" M10 Threaded Rod Couplers for Quest Cable Tray. Designed to extend the length of ceiling drop threaded rods (Quest#

[Contact Us](#)





## Cable Tray Support: Rod vs. Angle Steel

Learn about the different types of cable tray support, including rod supports and angle steel supports, and how to choose the right one for your

[Contact Us](#)



## Cable Tray to Rod Clip , nVent CADDY

We're here to help. 4Z parts installed on 3/8" (M10) smooth rod in the F2 direction has a Static Load Rating of 15 lb (67 N).

[Contact Us](#)



## Cable Trays & Cable Ladders catalogue.cdr

AXEL Cable Trays & Ladders are manufactured to relevant international standards and suitable for needs of any industry. AXEL Cable Tray system consist of Light duty, General duty and Heavy duty

[Contact Us](#)



## Cable Tray Installation

Learn everything about cable tray installation with our complete guide. Discover types, steps, and safety tips for efficient electrical cable management.

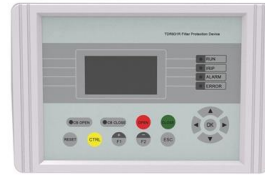
[Contact Us](#)



## **1/4" Threaded Rod (72L) , Wire Mesh Trays , Cable Tray and Reels**

Cablofil Wiremesh Cable Tray concept based upon performance, safety and economy; three qualities which make Cablofil Wiremesh Cable Tray system preferred by installers. Cablofil adapts to the most

[Contact Us](#)



## **Best Fixing and Mounting Options for Cable Trays , CMW**

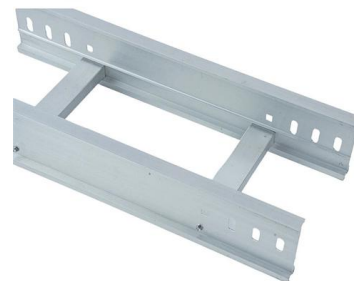
Regarding cable management, the fixing and mounting you choose for your cable trays can make or break your setup. Whether you're managing voice, data, or electrical cables, ensuring

[Contact Us](#)

## **Cable Tray Accessories, Cable Tray Hangers & Support , RS**

These fittings are used in conjunction with cable trays to support cables in ventilation holes, assist with directional change of piping systems, and aid cable channelling around obstacles.

[Contact Us](#)



## **Guide to cable support systems**

Widths of 8 and 15 millimetres enable flexible adjustment to different cable trays, cable ladders and cable volumes. With the help of the matching SBV tightening strap locks and 576 spring chuck, the

[Contact Us](#)



## Cable Management Systems

Atkore Marco's Steel Wire Cable Tray in 106mm depth. Steel Wire Cable Tray is adaptable and lightweight, enabling users to easily modify the tray on-site without compromising its strength or

[Contact Us](#)



## Stretch cable tray , Width-adjustable cable management

The Actiforce Stretch cable tray is the flexible and universal answer to the problem of tangled cables under your desk. Designed to fit any desk width, this innovative

[Contact Us](#)



## CABLE TRAY 3FT THREADED ROD W/ ANCHOR

o For hanging cable tray directly to ceiling  
o Includes Anchor, Rod and (2) M10 Nuts o 3ft (1m)  
extension rod o Sturdy design for heavy load  
weights o Professional

[Contact Us](#)



## Cable Tray Accessories , Hangers, Supports & Fittings

Shop cable tray accessories including hangers, elbows, covers, and supports. RS Philippines offers durable fittings for industrial cable management systems.

[Contact Us](#)





### **Threaded Rod , PEMS A**

Metal threaded rod in various Protection Systems and different diameters for supporting or fixing components in roof mounted electrical installations with cable trays.

[Contact Us](#)



### **Cable Tray Spacing Standards for Installation and Safety**

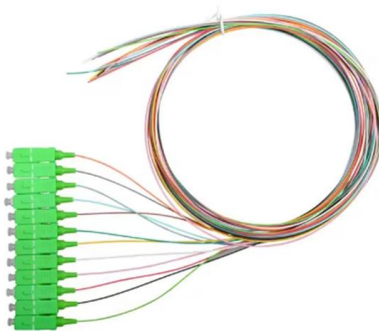
The Importance of Cable Tray Spacing in Electrical Infrastructure Cable tray spacing is a critical aspect of electrical infrastructure, influencing both

[Contact Us](#)

### **Cable Tray Connectors , McMaster-Carr**

Choose from our selection of cable tray connectors, including cable and hose trays, steel formable cable and hose trays, and more. Same and Next Day Delivery.

[Contact Us](#)



### **Cable Tray to Rod Clips , Cable Tray Spring Clips**

Rod Clips for fixing small cable containment to threaded rod. Gives a 68mm arm for supporting cable tray, basket or trunking.

[Contact Us](#)



## Cable Tray Fitting Accessories

Cable tray fittings and accessories play a crucial role in the seamless installation of a comprehensive cable management system. They enable functions such as

[Contact Us](#)



## Contact Us

---

For datasheets, pricing, or custom fiber access solutions, please visit:  
<https://www.frindel.es>