

Cable fixing of distribution boxes on each floor





Cable fixing of distribution boxes on each floor



Technical catalogue Floor distribution systems and systems for

The box has been designed so that it can be easily combined with the Scattoplast and Underfloor distribution systems both for traditional and for raised floors; it can also be used with trunkings for

[Contact Us](#)

Grounding System Installation Standards for Distribution Boxes and

Hey there! If you're working with electrical systems, you know that grounding isn't just some bureaucratic requirement--it's literally the difference between a safe, functional system and a potential disaster.



[Contact Us](#)



Underfloor cable systems explained in details

Underfloor voids are useful spaces for the installation of cables that are passing through the area as part of the distribution system of the whole building. Cable tray or basket may be

[Contact Us](#)

Modular underfloor solution for energy distribution , Hager

Deliver energy where and when you want it with an invisible solution that adapts to any floor!

[Contact Us](#)



700 Series Floor Box

Wire power and data outlets and attach to inner frame. Cut a hole in the subfloor* 10mm larger than the box stated frame size. For example, a SB-738 is frame size 320x250mm and should have a

[Contact Us](#)



Floor boxes provide unique access , Cabling Installation

Bringing the necessary power, voice, data, and video cables to the workstation can be done many ways depending on a building`s design and the customer`s needs

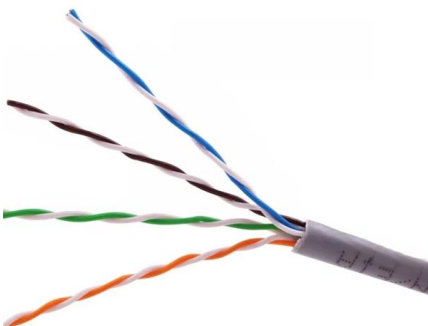
[Contact Us](#)



PSI FLOOR TRUNKING EDITION 2022

Raised floor trunking is on the slab level and cable distribution is carried through the trunkings, terminating in floor boxes which are mounted in to the raised false floor.

[Contact Us](#)





The installation requirements for the distribution box

Learn how to install a distribution box safely and correctly. Covers wiring, placement, standards, and expert tips for a compliant setup.

[Contact Us](#)



How to Choose a House Distribution Box , CHINT global

A well-chosen distribution box ensures the safety and efficiency of your household electrical system. This article guides you through selecting a

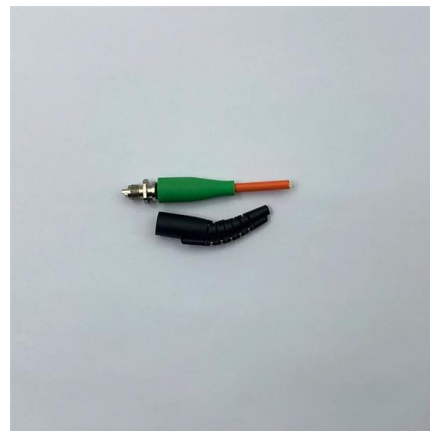
[Contact Us](#)



The Complete Guide to Distribution Box: Installation, Types & More

What's the difference between a distribution box and a sub-panel? A distribution box typically refers to the main electrical panel that receives power from the utility service. A sub-panel is

[Contact Us](#)



How to Install a Cable Distribution Box Safely and

Reliable cable distribution boxes ensure safe, efficient power management for residential, commercial, and industrial systems. Learn

[Contact Us](#)

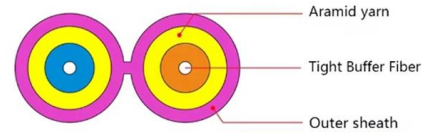




Power Distribution

This page provides guidance on floor power products and accessories, including tips on installing floor boxes and comparing different cable systems.

[Contact Us](#)



Key Points Of Installation And Collocation Of Distribution Box In

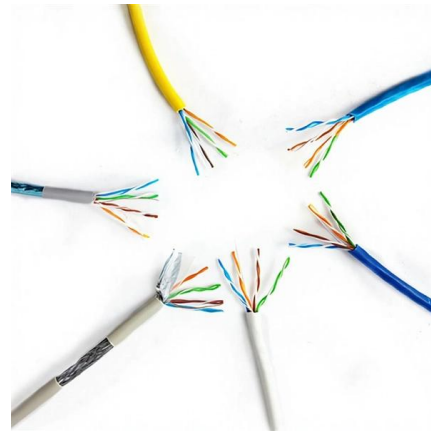
The inlets and outlets of the mobile distribution box and switch box shall not be connected with pins Rubber insulated cable must be used for the mouth line and exit line. 8. The distribution box and

[Contact Us](#)

Maximizing Connectivity: A Guide to Floor Boxes & Accessories

Discover the essentials of installing floor boxes and accessories for seamless connectivity in your space. Learn about types, accessories, installation best practices, and more

[Contact Us](#)



A Guide To Underfloor Power

Many organisations get around this potential problem by installing underfloor power distribution. Running all electrical and data wiring

[Contact Us](#)



Requirements And Specifications For Installation Of

The bottom edge of the distribution box is usually between 1.5 meters and 1.8 meters above the ground, which is convenient for operation and

[Contact Us](#)



Integrated wiring fiber optic distribution box installation tutorial

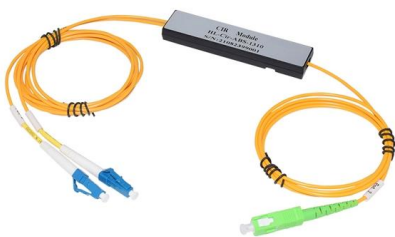
First, connect each pre-terminated fiber optic cable to the adapter panel separately, making sure the ports correspond one-to-one; then fix the fiber optic adapter panel to the front panel

[Contact Us](#)

Designing and Building an Electrical Panel Part 2:

Fixed to a wall--This is a common approach for small electrical distribution boards. Fixed to a floor--This is useful for large and heavy cabinets.

[Contact Us](#)



The Complete Guide To Installing a Floor Box

Once the testing is complete, secure the cables within the floor boxes to prevent them from getting tangled or accidentally disconnected. Use cable management solutions, such as cable

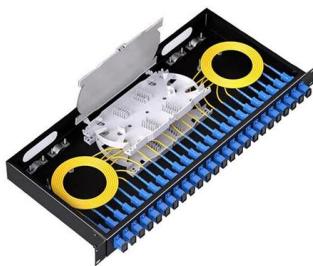
[Contact Us](#)



Organizing a Panel Box

Once you have pulled cables into the box and tightened cable connectors, strip Romex cable sheathing, leaving at least 1/4 in. of sheathing extending into the

[Contact Us](#)



Mastering Network Cabling Projects in the UK: Floor Boxes

Floor boxes are concealed compartments installed within the flooring, serving as central cable distribution points. They are crucial for maintaining a tidy and organised appearance while

[Contact Us](#)

Wall-Mounted vs. Floor-Mounted Distribution Boxes:

Compare wall-mounted vs. floor-mounted distribution boxes. Learn their key differences, uses, pros & cons to choose the right one for your space

[Contact Us](#)



Legrand AV , Understanding Floor Boxes: Applications and Installation

Explore the types, benefits, and installation processes of floor boxes to enhance power and AV connectivity in modern workspaces.

[Contact Us](#)



Main Distribution Box

To eliminate inter-voltage connection, each connector is keyed and color-coded to meet specific voltage requirements. The MDB-CF can be fitted with terminal

[Contact Us](#)



How to Install a Distribution Box--A Comprehensive

Whether you are an electrical contractor or a construction brigade, knowing how to properly and safely install distribution boxes is the basis of

[Contact Us](#)

Cautions and Requirements for Installation of

Distribution box is a low-voltage distribution device which assembles switchgear, measuring instruments, protective appliances and auxiliary equipment in a closed

[Contact Us](#)



Contact Us

For datasheets, pricing, or custom fiber access solutions, please visit:
<https://www.frindel.es>