



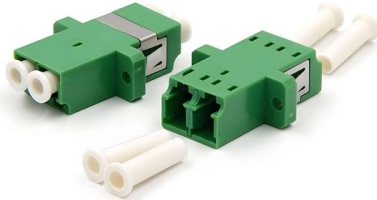
FRINDEL OPTICS

Cable Tray Fabrication Coefficient Table





Cable Tray Fabrication Coefficient Table



Technical Specification for Cable tray installation and cable laying work

Approval of IPR shall be obtained for site preparation and marking the cable tray routes and locations of cable tray support before proceeding with the erection and installation work.

[Contact Us](#)

cable tray bends and offset fabrication table

Resources For Electrical & Electronic Engineers
cable tray bends and offset fabrication table
Discover more from Electrical Engineering 123
Subscribe to get the latest posts sent to your email.

[Contact Us](#)



Equipped with a removable **Mounting Plate** inside the enclosure, enabling customized drilling and secure component mounting.

CABLE TRAY

Cable Support Systems are well designed to provide necessary support for cable trays, cable ladders and trunkings. Cable supports are manufactured according to common standards from high quality

[Contact Us](#)



Cable Tray Fill Calculator Online

The Cable Tray Fill Calculator is a valuable tool used in electrical engineering and construction to determine the percentage of a cable tray that is

[Contact Us](#)



Cable Tray Product Data Sheet

IEC 61537, relative to requirements and tests for cable tray systems and cable ladder systems intended for the support and accommodation of cables and possibly other electrical equipment in electrical

[Contact Us](#)

Cable tray manual

All the technical information developed by the 1973 NEC® Technical Subcommittee on Cable Tray for Article 318 - Cable Trays was based on cable trays with side rails and this technical information is still

[Contact Us](#)



Cable Tray Sizing & Load Calculations Made Simple

Step 2: Choose Tray Type and Width For heavy power cables or long spans, ladder trays typically perform best. For mixed small cables, perforated works well. Width is set by total cable area

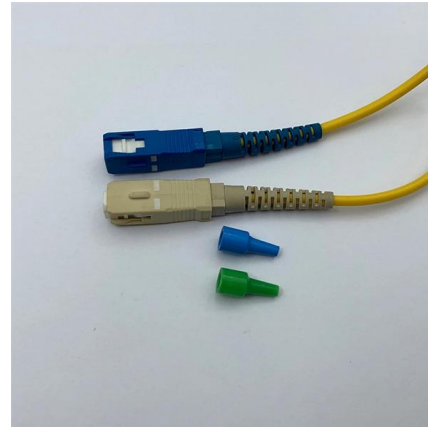
[Contact Us](#)



T& B® Cable Tray

T& B nonmetallic cable tray systems are manufactured from glass fiber-reinforced plastic shapes that meet the ASTM E-84 Class 1 flame rating and self-extinguishing requirements of ASTM D-635.

[Contact Us](#)



B-Line series Cable Tray Design Considerations

As an industry leader in cable tray, Eaton offers one of the widest ranges of cable management solutions available in the market today with its B-Line series portfolio. With unmatched quality and service, we

[Contact Us](#)

MP Husky Cable Tray Catalog.pdf

Using the charts on the next page, determine the correct class of tray as it relates to your desired loading capacity per foot and support span. You will also need to know the weight of the cable and at

[Contact Us](#)



TECHNICAL AND SIZING DATA

Steel ladder tray has load thermal expansion (low coefficient) and provides electric shielding for low level control circuits when used in electro-magnetic shielded ladder trays.

[Contact Us](#)



Enduro_Specification_Ladder Cable Tray_04-30-21

For International Standards, the manufacturer shall declare the tray system Safe Working Load (SWL) per the International Electrotechnical Commission (IEC) 61537 and publish in the form of a table or



[Contact Us](#)



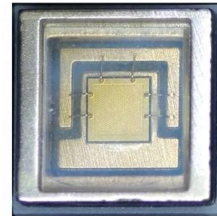
Technical Specification for Cable tray installation and cable laying work

1. Scope :- This specification covers the following major activities; - Fabrication and installation of Mild Steel (MS) support structure for Galvanized Iron (GI) Cable tray. - Installation of perforated GI Cable

[Contact Us](#)

Ampacity of Power Cables Installed in Cable Trays

Table of Contents Introduction Power cables are often installed on exposed metallic trays in industrial and commercial electrical systems, a widely accepted practice



[Contact Us](#)



Cable tray manual

Nearly every aspect of cable tray design and installation has been explored for the use of the reader. If a topic has not been covered sufficiently to answer a specific question or if additional information is

[Contact Us](#)



Cable Tray Capacity Calculator

A Cable Tray Capacity Calculator is a tool for electrical engineers involved in the installation and management of electrical cables.

[Contact Us](#)



Cable Tray Sizing Calculator , IEC 61537 & NEC 392 Guide

Use this cable tray sizing calculator to check fill %, select tray size, and comply with IEC 61537 & NEC 392 with formulas, example and checklist.

[Contact Us](#)



Cable Tray Load Calculation and Sizing: Your Easy Guide

Worried about cable tray capacity? Learn simple cable tray load calculation steps. This guide helps you pick the right tray every time, keeping

[Contact Us](#)



Cable Tray Technical Guide A practical guide to product selection and

Cable Tray Technical Guide A practical guide to product selection and installation This guide for engineers and installers has been developed by ABB as a practical reference regarding cable tray

[Contact Us](#)



Best Practice Guide to Cable Ladder and Cable Tray Systems

This guide covers cable ladder systems, cable tray systems, channel support systems and associated supports intended for the support and accommodation of cables and possibly other electrical

[Contact Us](#)



Cable Tray Fill Calculator

Cable Cross-Sectional Area: For round cables, use πr^2 , where r is the cable radius. Allowable Fill Area: This varies based on the tray type and local electrical codes.

[Contact Us](#)



Cable Tray Size Calculation for Project Engineers

Cable tray size calculation is important for ensuring safe cable installation, proper heat dissipation, and enough spare capacity for future

[Contact Us](#)



Technical information

Technical information CSA and NEMA loading classes The standard classes of cable trays, as related to their maximum design loads and to the associated design support spacing based on a simple beam

[Contact Us](#)



LEGRAND CABLE TRAYS TECHNICAL GUIDE



Not all cable trays are equivalent. The mechanical and electrical characteristics, tests, certifications, overall quality management, recommendations mentioned in this technical guide only apply to our

[Contact Us](#)



CTI-S65001_A01

Thermal Expansion and Contraction of Cable Tray
All materials expand and contract due to temperature changes. It is important that cable tray installations incorporate features which provide adequate

[Contact Us](#)



TECHNICAL AND SIZING DATA

By loading this tray more heavily, the designer must be careful not to exceed the total cable capacity as outlined in the Canadian Electrical Code (See following section on ladder tray sizing).

[Contact Us](#)



Cable Tray Technical Guide A practical guide to product selection and

Conductors used in cable tray must be specified in Table 19 of the CEC and, except where permitted under paragraphs [12-2202(2)] and [(3)], covered by a continuous metal sheath or an interlocking

[Contact Us](#)



Contact Us

For datasheets, pricing, or custom fiber access solutions, please visit:
<https://www.frindel.es>